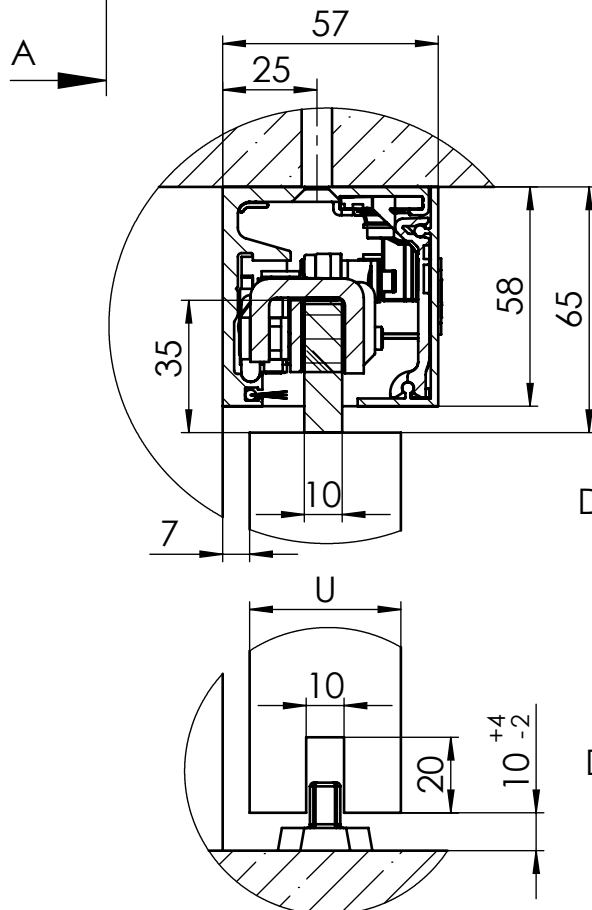
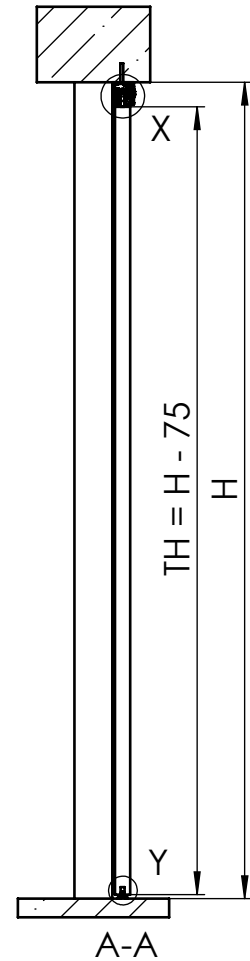
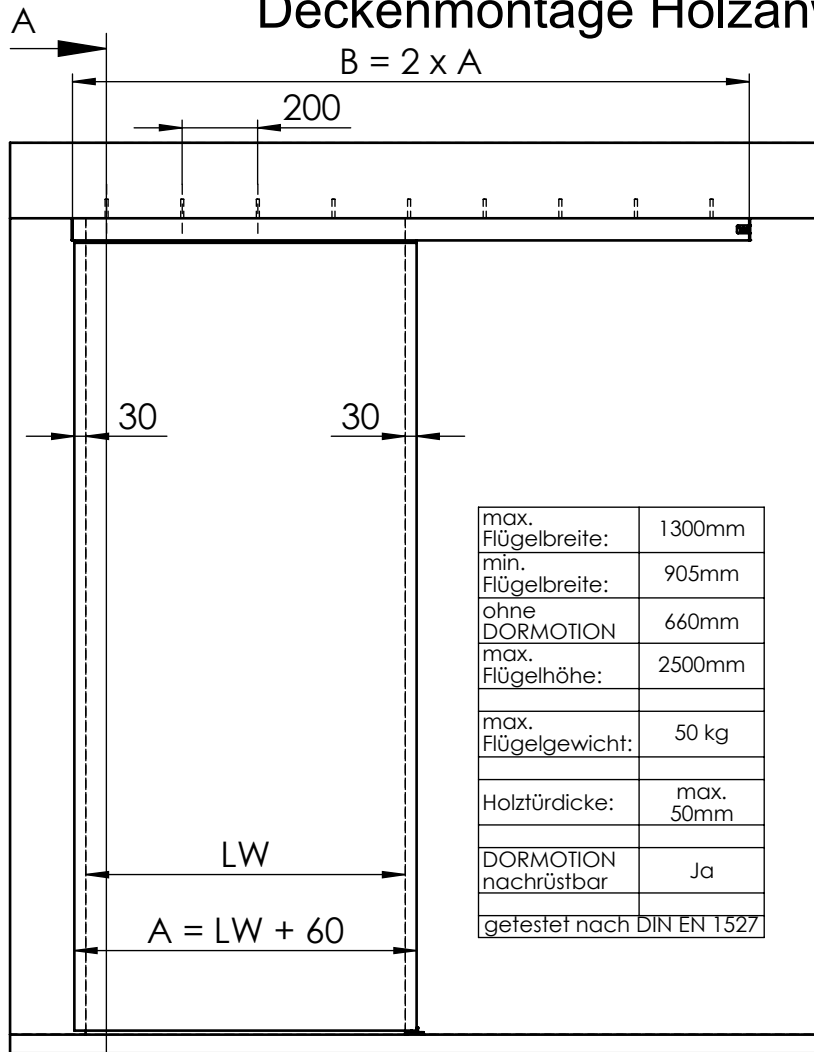
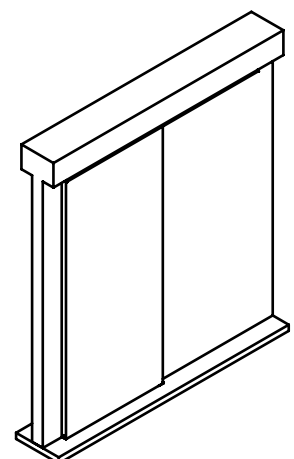


# MUTO Comfort M DORMOTION 50

## Deckenmontage Holzanwendung



A	Flügelbreite
B	Laufschiene
H	Gesamthöhe
LW	lichte Weite
TH	Türhöhe
u	Holzdicke

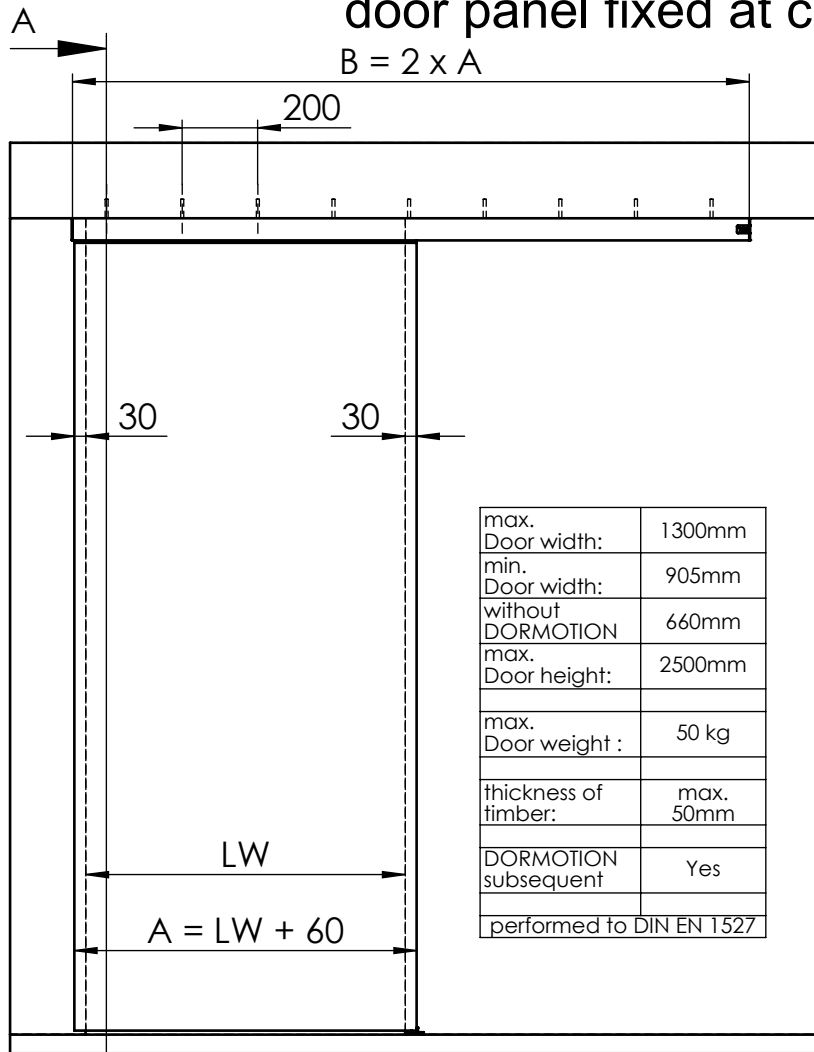


Detail X (1 : 2)

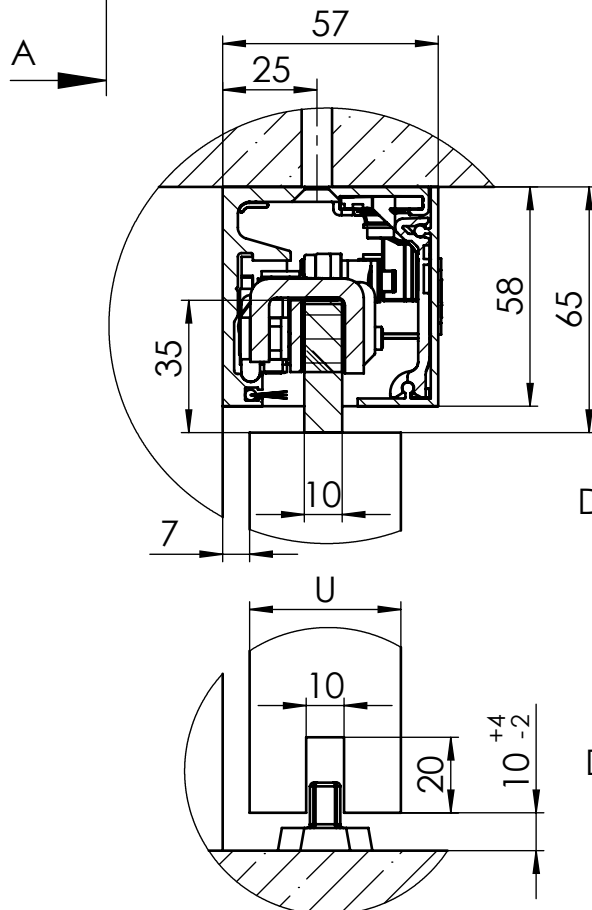
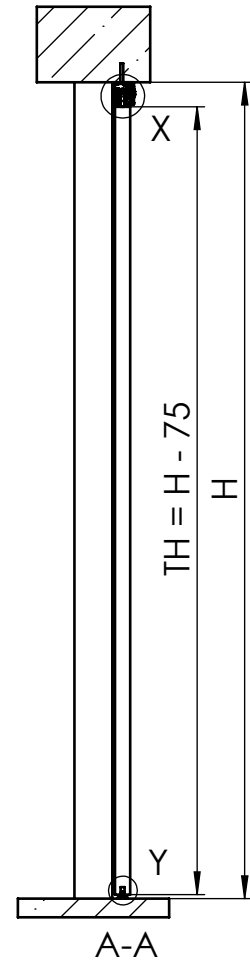
Detail Y (1 : 2)

36-157-D

# MUTO Comfort M DORMOTION 50 timber door panel fixed at ceiling



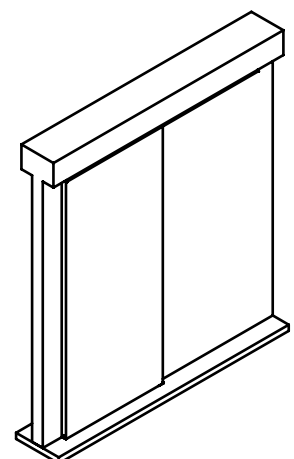
max. Door width:	1300mm
min. Door width:	905mm
without DORMOTION	660mm
max. Door height:	2500mm
max. Door weight :	50 kg
thickness of timber:	max. 50mm
DORMOTION subsequent	Yes
performed to DIN EN 1527	



Detail X (1 : 2)

Detail Y (1 : 2)

A	Glass width
B	length of track
H	total height
LW	clear opening width
TH	Door height
u	thickness of timber



36-157-D