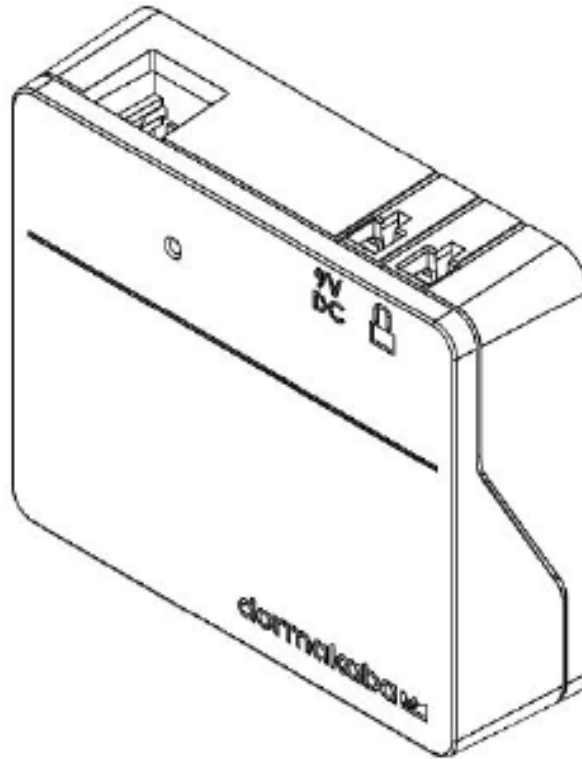


# Remote Disable – Software and Hardware Setup



## Table of Contents

Introduction.....	2
About Remote Disable.....	2
Remote Disable – LA GARD Software Setup.....	3
Remote Disable – Keypad Setup .....	5
Display Keypad Setup .....	5
Non-Display Keypad Setup.....	6
Alarm Box & Input Signal Overview .....	6
Connecting the Input Signal.....	6
Mount the Alarm Box .....	6
Connect the Alarm Box.....	6
Alarm Box Connection Diagram .....	7

# Introduction

This document outlines how to set up a 700 series lock to use the Remote Disable function.

## About Remote Disable

A configurable Input Signal is available on systems using 702, 703, 704, and 705 Keypad models. Using the Input Signal will require the installation of a Battery/Alarm Box (Item/Order # 704045).

**Note:** While not configurable for 701 locks, they do have an input signal that controls this Remote Disabled/Lockout function.

When used in a multi-lock system, Lock #1 monitors the state of this signal, and depending on how it is configured, it will perform one of the following functions when this signal is asserted:

- **Ignored** - Input Signal will have no effect on how the system operates
- **Remote Disabled/Lockout** - When an open lock request is received for any lock, all requests to open will be blocked regardless of which target lock the user is attempting to open. This is the default setting.
- **Time Delay Override** - Time Delay for all locks in the system is cancelled and any lock may be opened immediately by a user. If one or more locks were in either the Delay Period or the Confirmation Window, Time Delay is canceled, and the lock can be opened immediately by a user, with open privilege, providing the correct credentials
- **Dual User Override** - Dual User requirements are ignored, allowing a single user to open a lock or access the menus

With the application of the Alarm Box, the opening sequence can be disabled by asserting a signal on the Alarm Box. The signal may come from an external alarming system that could be connected to this lock to prevent it from opening.

Please observe the following while using the Remote Disable:



- The Remote Disable assertion will not block users from accessing the menus on a Display Keypad
- The signal must be asserted prior to the user authentication for it to be recognized by the system
- Duress combinations will still trigger the alarm signal, even if Remote Disable is asserted
- A Keypad with a display will show 'Lock #x NOT open' when the Remote Disable is asserted. The 'x' would be replaced by a lock that is targeted to be opened

- A non-Display Keypad will indicate that the opening of the lock has failed if an opening is attempted with the Remote Disable asserted. The Keypad will produce 3 low beeps accompanied by 3 red LED flashes

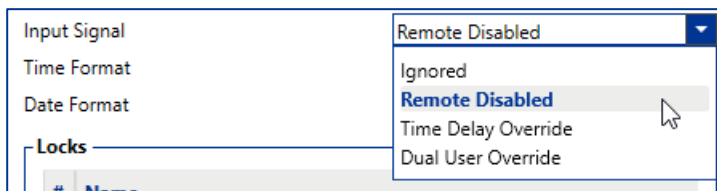
**Note:** The LA GARD Software and the Alarm Box are not UL evaluated.

## Remote Disable – LA GARD Software Setup

Follow these steps within the LA GARD Software client to configure a system to use the Remote Disable function:

1. From the LA GARD software main menu, select Systems.  **Systems**
2. Locate and click the system you want to configure from the Systems list.
3. If there are no systems in your database, your Systems list will appear blank. If this is the case, create a new System by clicking the Create icon. 

4. If creating a new System, enter a System name in the space provided and configure all other fields/settings based on your preferences. For more information about LA GARD software and 700 series system settings, please refer to the System User Guide (Document #7040.1121) and the help menu included with the LA GARD software.
5. Configure the Input Signal by selecting "Remote Disabled" from the Input Signal drop-down menu.

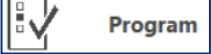


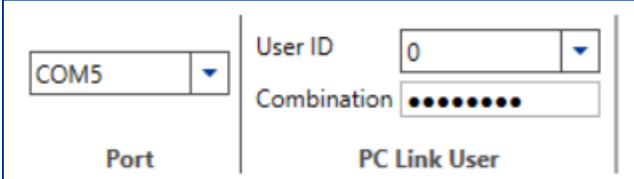
6. Select the Save icon from the top-right of the screen. 

To program/update your system with these changes, do the following:

1. From the LA GARD software main menu, select Systems.
2. Locate and click the system you want to configure from the Systems list.
3. Click the PC Link icon from the top-right of the screen to open the PC Link window.



4. In the PC Link window, select Program from the left-hand column. 
5. Verify that the correct COM port is selected. You can use the drop-down menu to switch ports.
6. Use the drop-down menu to select the Master user ID and enter the corresponding combination in the space provided.

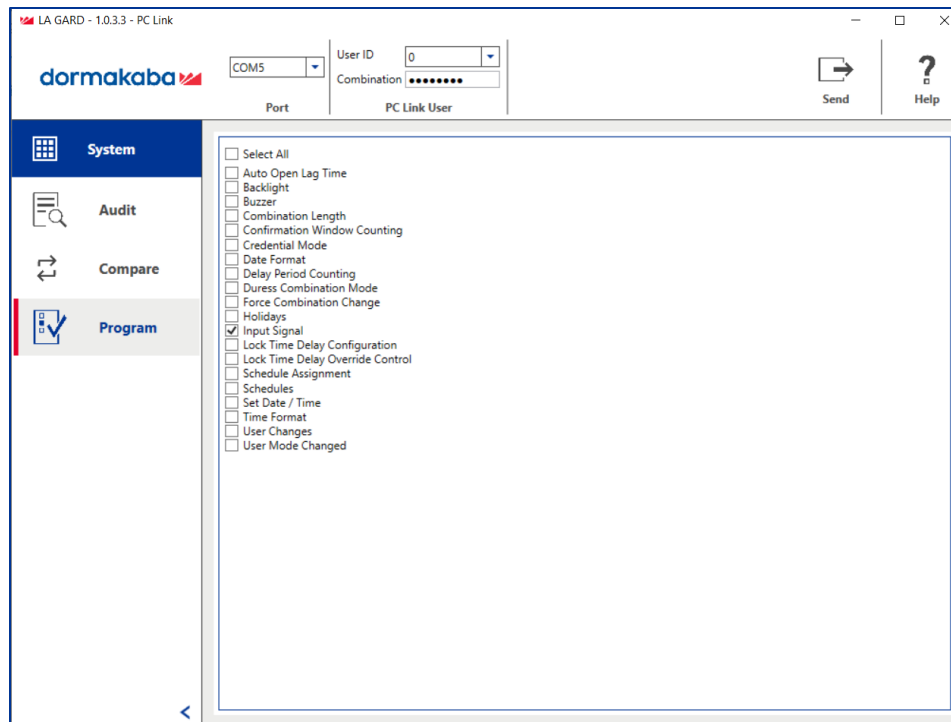


7. From the list of system settings, ensure that Input Signal is checked off. You can also check off any other setting you want to update/program, or check Select All to update/program all system settings.
8. Connect the Keypad to the PC by doing the following:
  - a. Plug the 700 Series USB Dongle into the USB Port of the PC.
  - b. Plug the USB-connector end of the cable into the dongle.
  - c. Plug the mini-USB end of the cable into the mini-USB port on the Keypad.
9. On the Keypad, enter a valid User ID and the corresponding combination (the same ID and combination used in step 6).
10. Using the arrow buttons on the Keypad, navigate through the Main Menu and select PC Link. The LED on the Keypad will illuminate red, and "Connect Software" will appear on the keypad's display screen.
11. In the software client PC Link window, click the Send icon located at the top-right of the screen.



A progress bar will appear onscreen. As the Keypad is programmed, "PC Link active" will appear on the display screen and the LED will illuminate green.

12. When the programming is complete, "PC Link closed" will appear on the Keypad's display screen, then the system will restart.



*The LA GARD Software PC Link screen*

## Remote Disable – Keypad Setup

Users can also configure the Input Signal as a Remote Disabled signal using both Display and Non-Display Keypads.

### Display Keypad Setup

Follow these steps to configure the Input Signal on a Display Keypad:

1. Enter an Authorized User ID and Combination.
2. Navigate through the Main Menu and select "System"
3. Select "Input Signal" from the sub-menu.
4. Scroll through the list of options and select "Disable Open" to set the Input Signal to Remote Disable mode.
5. "Success Mode updated" will appear on screen and the Keypad will beep three times and flash a green LED once complete.

# Non-Display Keypad Setup

Follow these steps to configure the Input Signal on a Non-Display Keypad:

1. Using the Keypad, input the following keystrokes:

**#16 + (Master ID and Combination) + (Input Signal Mode)\* + (Enter key)**

\*(0 = Ignore, 1 = Remote Disabled, 2 = Remote Time Delay Override, 3 = Remote Dual User Override)

As an example, if your Master ID was 00 with a Combination of 12345678, you would enter #1600123456781 to set up the Input signal for Remote Disabled.

2. The Keypad will beep three times and flash a green LED once complete.

## Alarm Box & Input Signal Overview

The Alarm Box (Item/Order # 704045) allows for a Remote Disable input signal that can block the open command to the lock if asserted. The Alarm Box is not UL evaluated. (Item/Order # 704045, "Alarm Box")

## Connecting the Input Signal

This section outlines how to connect the Input Signal from your alarm/control system to your 700 series Lock and Keypad using the Alarm Box to make use of the Remote Disable function.

### Mount the Alarm Box

Mount the Alarm Box to the interior safe wall via the holes and screws provided.

### Connect the Alarm Box

For multi-lock configurations, the silent alarm works only with the primary lock (the lock connected to Position 1 on the Multiplexer). This guide outlines connections to primary locks only.

Follow these steps to connect an Alarm Box to a LA GARD safe lock:

1. Disconnect the safe lock from the power supply.
2. Connect the Alarm Box lock connector to the safe lock BAT port with the 41040-2 cable.
3. Connect the alarm/control system to the Alarm Box via the terminal block. Based on the terminals used, the alarm relay can be configured to Normally Open (COM and NO) or Normally Closed (COM and NC).
4. Optional: Connect the Remote Disable signal from the alarm/control system to EXT+ and EXT- via the terminal block.

5. Optional: Connect AC Adapter to 9V DC connector.
6. Reconnect the safe lock to the system.
7. The default setting within the lock for silent alarms is set to OFF.

Consult the System User Guide (Document #7040.0320) for further instructions on how to change silent alarm and remote disable settings.

## Alarm Box Connection Diagram



Lock Connector: Connect to BAT port on lock with 41040-2 cable.



9V DC Connector: Optional connection to 701107 AC Power Supply Kit.

Terminal Block: Connection to alarm/control panel.

1. EXT- (Control Signal Reference Voltage or Ground)
2. EX+ (+5V DC Min. to +12V DC Max. Control Signal)
3. NO (Normally Open)
4. COM (Common)
5. NC (Normally Closed)