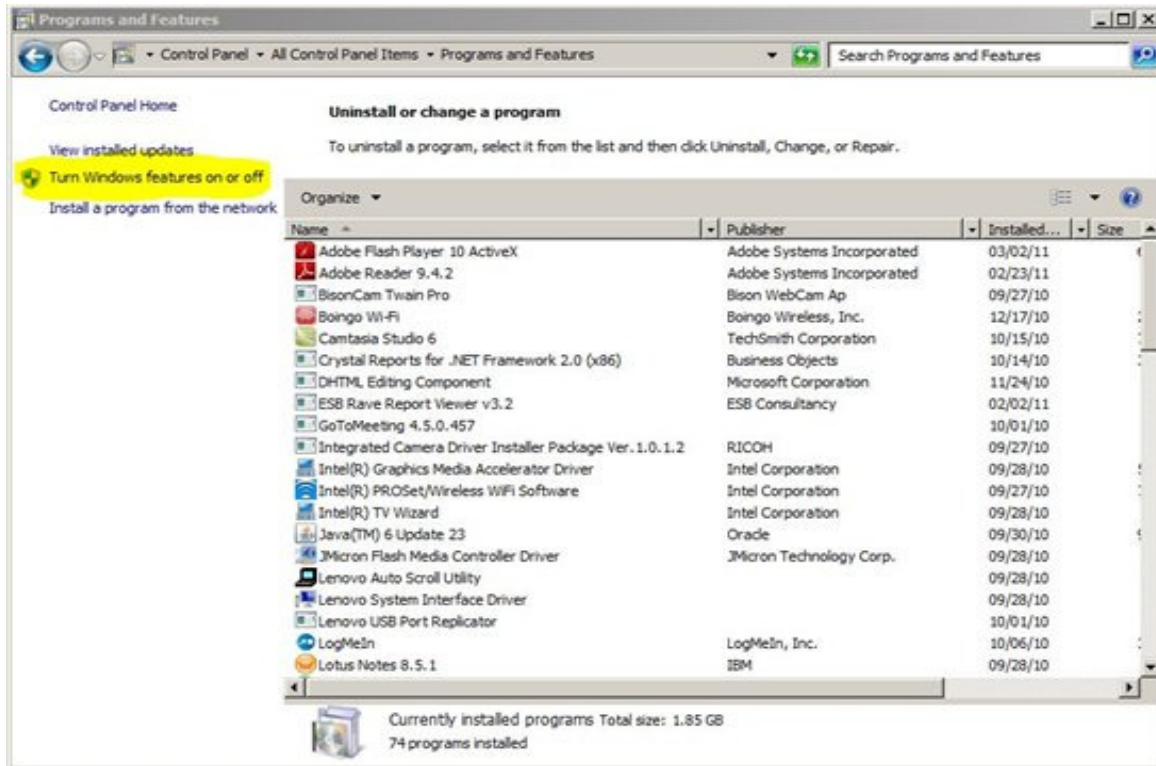
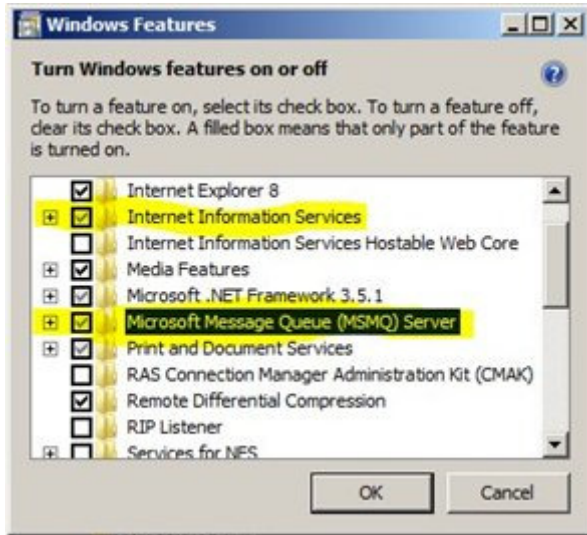


# ATLAS Installation

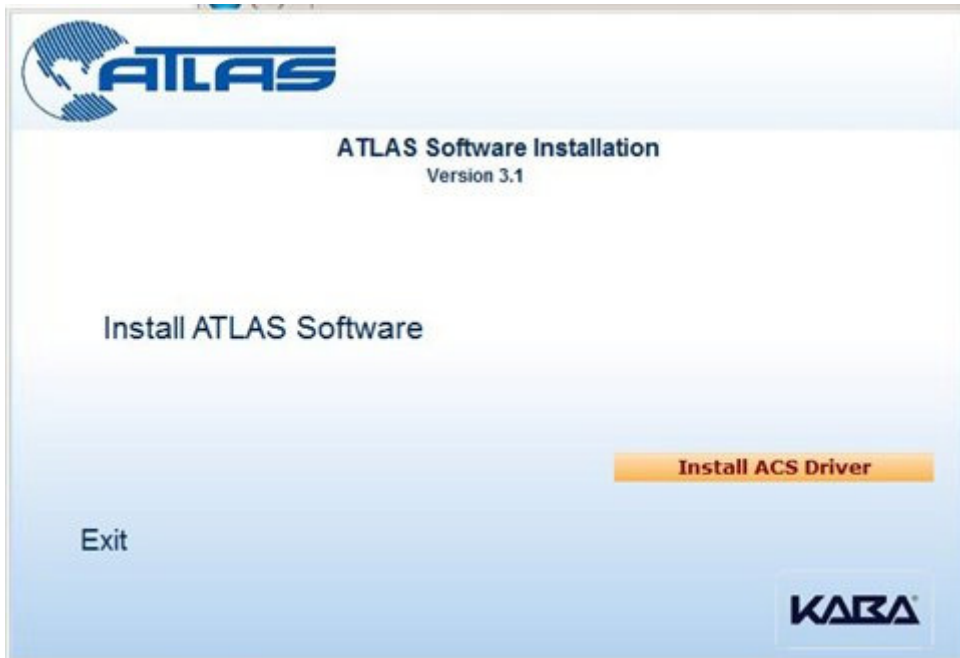
1. Before beginning the installation, IIS and Message queuing (MSMQ) must be installed. From the **Control Panel – All Control Panel Items – Programs and Features**, click on **Turn Windows features on or off**



Put a checkmark in **Internet Information Services** and **Microsoft Message Queue (MSMQ) Server** and click **OK**



2. When completed insert the ATLAS CD. If the encoders being used are the ACR120 encoders you need to install the ACS Driver. If you are using the motorized encoders you can skip to step 3



Select the driver based on the operating system that you are using and follow the prompts. Once completed click on **Back**



3. Select Install ATLAS Software



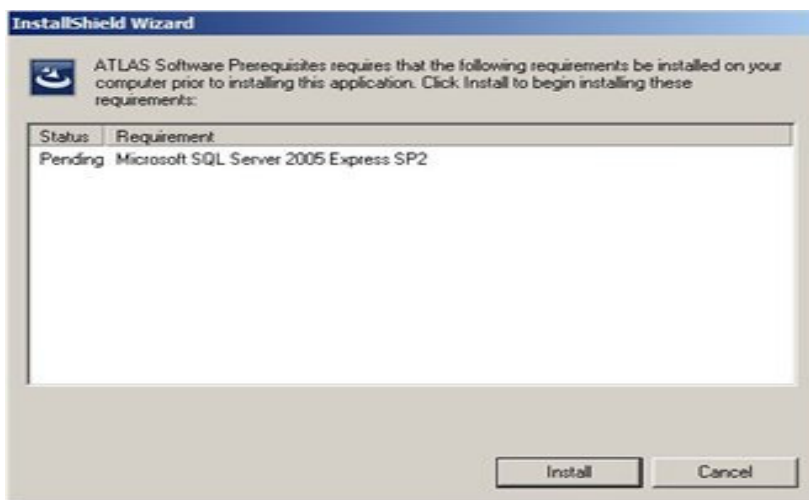
4. Select ATLAS Express Installation



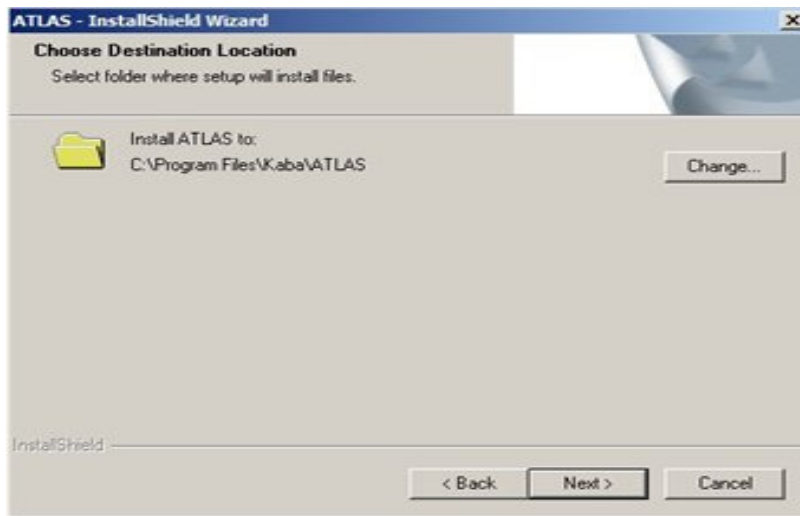
Click **Yes** to continue



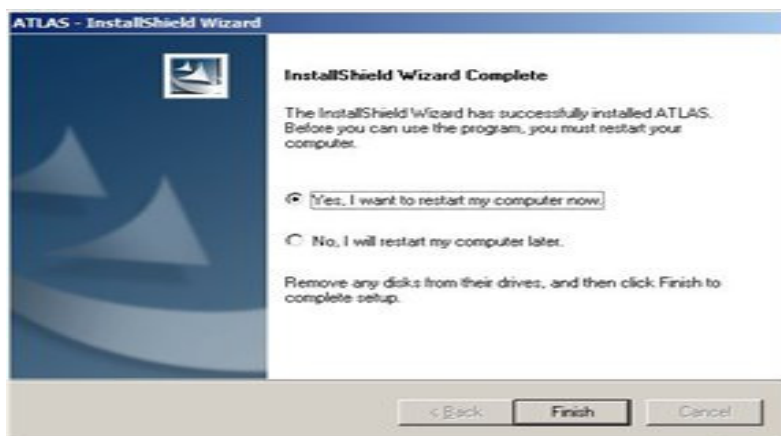
5. Click on Install to install the ATLAS Software prerequisites



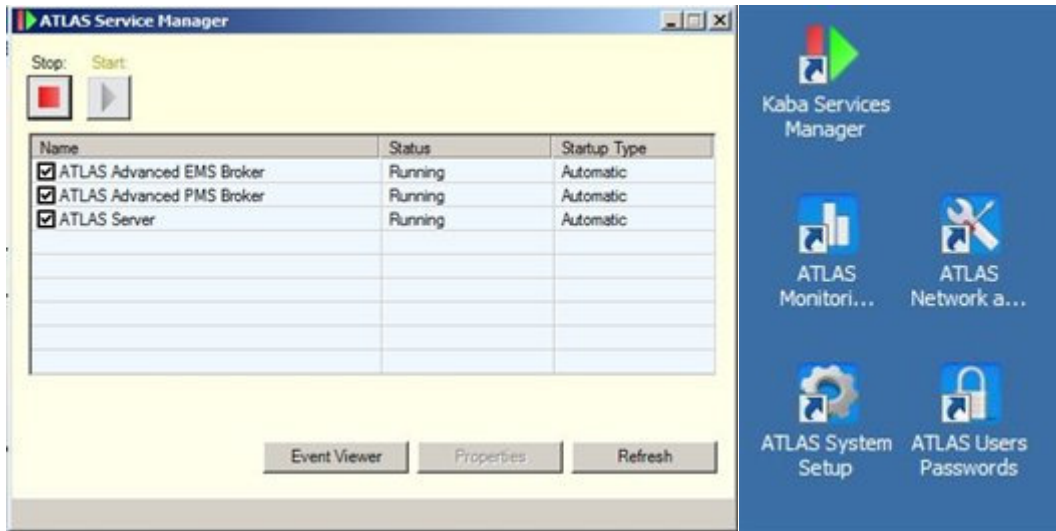
Click next to install in the default folders



Click Finish to restart the computer



The Express installation installs the basic ATLAS services and Applications as follows



If you will have an encoder on the server, you will need to install the EMS service.

If the PMS interface is serial, you will also need to install the PMS Service. (Not needed if PMS uses the web service interface)

First Select Network Installation



Select ATLAS Client



**Microsoft Net Framework 2.0** is needed to run the applications and the encoder drivers. It is automatically installed during the express installation but may be required on workstations where the encoder or Administrative tools are installed.

The **ATLAS Administrative tools** are installed by default on the server; they can also be installed on select workstations at the discretion of the property. Not usually required on front desk workstations.

Select **ATLAS EMS Service** to install the encoder software and follow the on screen prompts. This should also be installed on Client Workstations where an encoder will physically be connected

Select **ATLAS PMS Service** to install the Serial PMS interface (not needed for web interface) and follow the on screen prompts. This should only be installed on the server if needed. This should not be installed on Client Workstations.



## **ATLAS Runtime Modes**

ATLAS can be configured to run in 2 different modes. By default it is configured to run in Mode 1.

**Mode 1** – Use mode 1 if using 710-2, 760/770, or 790 V1 locks

This mode is the same as previous versions of ATLAS

**Mode 2** – Use mode 2 if using only **790 V2 locks** and new RACs with RFID

This mode adds staff cancellation, 64 extra common areas which can be used as Staff, Guest or mixed.

To switch from Mode 1 to Mode 2 you need to modify the **ATLASServer.exe.config** file. This file is found in the **C:\Program Files\Kaba\ATLAS\SERVER** folder.

Open the file with notepad and modify this line

```
<add key="ATLASRuntimeMode" value="1" />
```

To

```
<add key="ATLASRuntimeMode" value="2" />
```

Restart your computer and it will now be in Mode 2