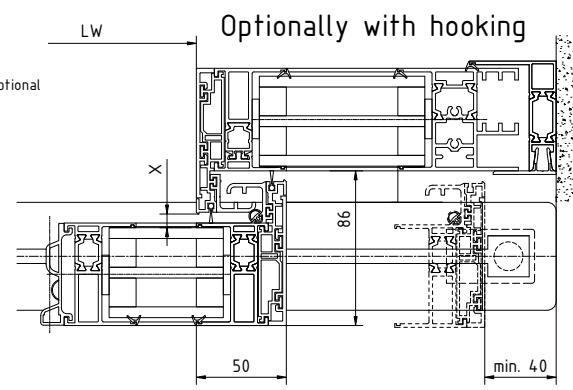
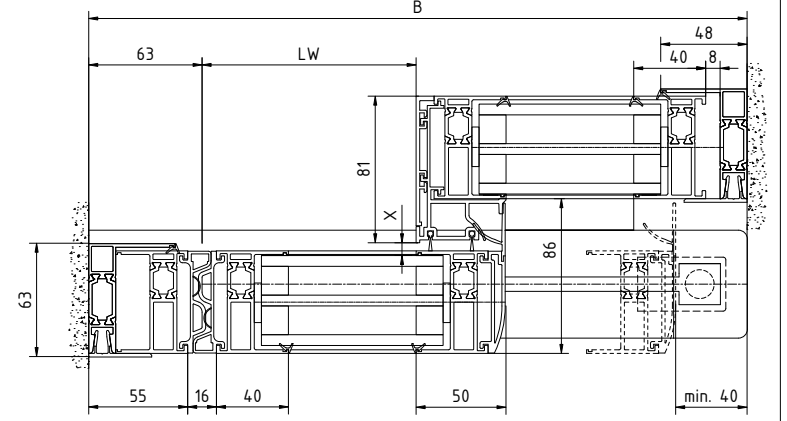
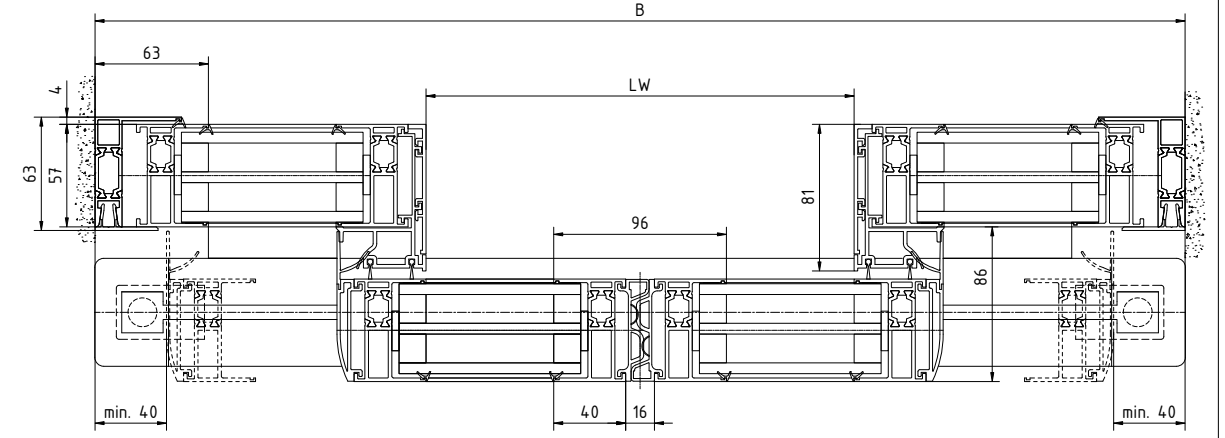
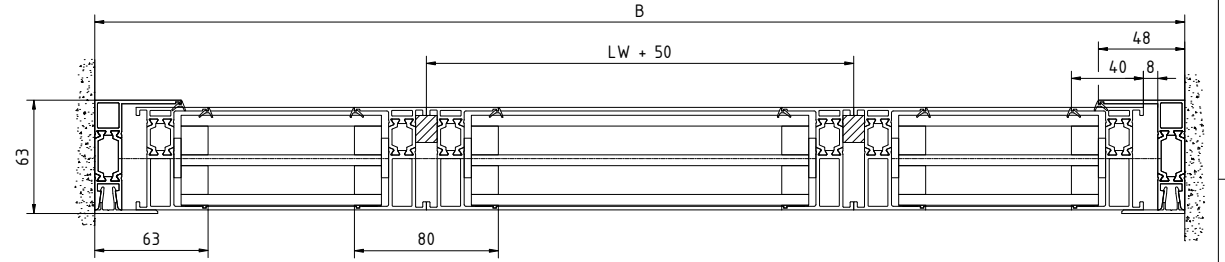


FFL	Finished floor level	Pro Green ES 250 PRO / ES 400 PRO	Weight
LW	Passage width	1-leaf	1-leaf
LH	Clearance height	LW 700 - 3000	ES 250 PRO 1 x 125 kg ES 400 PRO 1 x 250 kg
H	Installation height	B min. = 2 x LW + 153 (with fixed part / with post width 63mm)	
X	Noticed	2-leaf LW 800 - 3000	2-leaf
According to EN 16005 / DIN 18650 Construction and testing principles for automatics. For doors, this dimension may only be 4 - 8 mm.		B min. = 2 x LW + 180 (with fixed part / without post width)	Standard ES 250 PRO 2 x 125 kg ES 400 PRO 2 x 200 kg

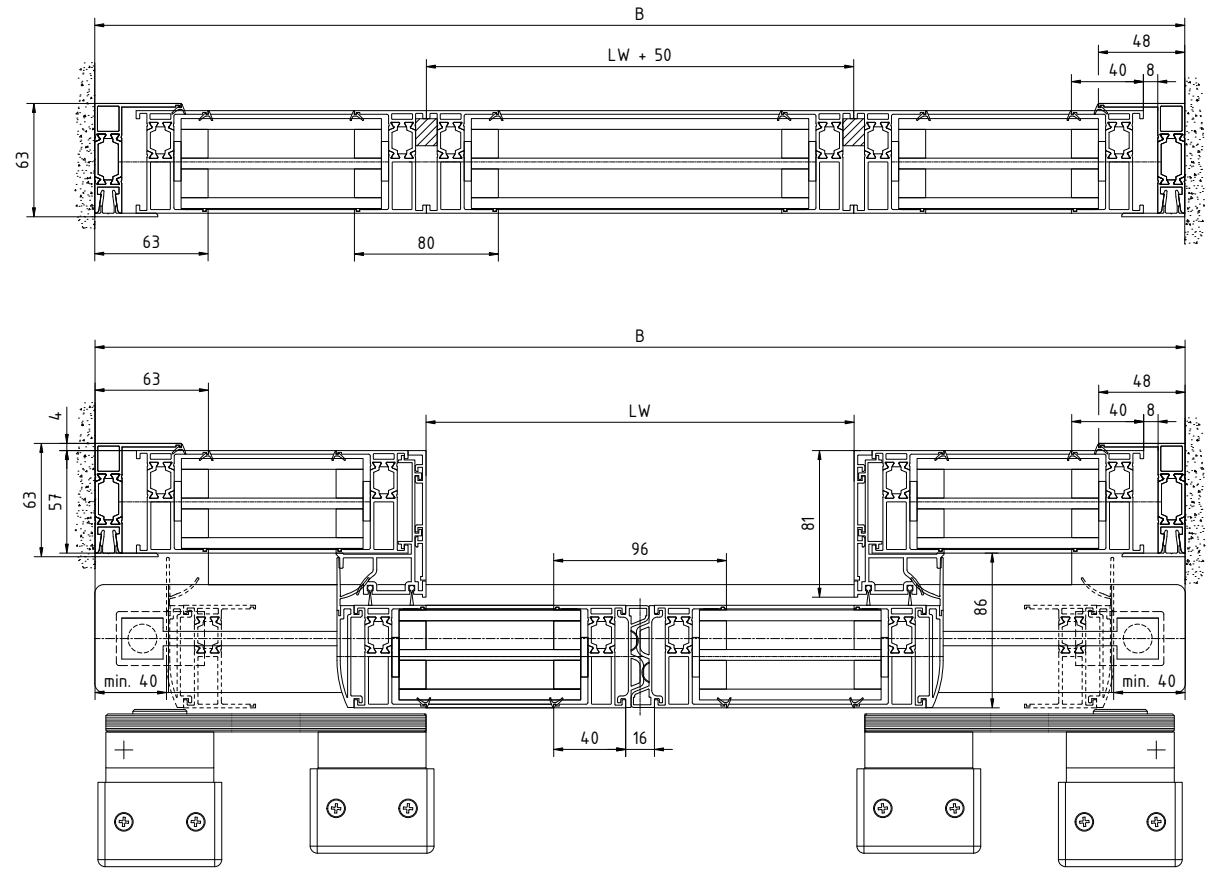
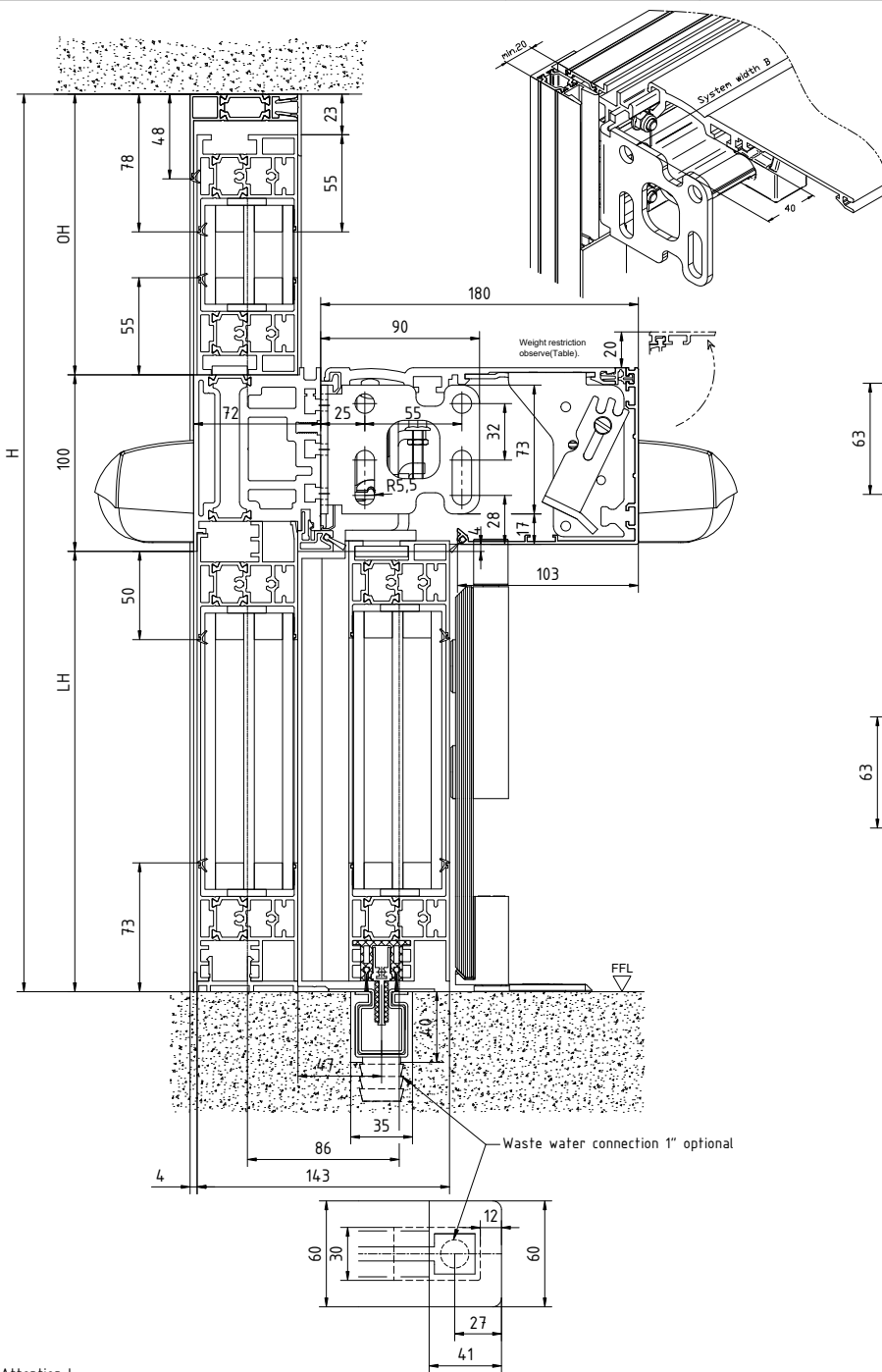
For doors with side panels and LM supports (through mounting), from a door leaf weight of approx. 120kg - depending on the clear width of the door - either a drive suspension or the drive variant with a height of 100mm is required.



Waste water connection 1" optional

Attention !
The safety equipment of the automatic door must correspond to the risk analysis according to DIN 18650

ES PROLINE	ES PROLINE	ES PROLINE	ES PROLINE	ES PROLINE
Pro Green sliding door	Pro Green sliding door	Pro Green sliding door	Pro Green sliding door	Pro Green sliding door
1:1	1:1	1:1	1:1	1:1
257895-00-6-60	257895-00-6-60	257895-00-6-60	257895-00-6-60	257895-00-6-60



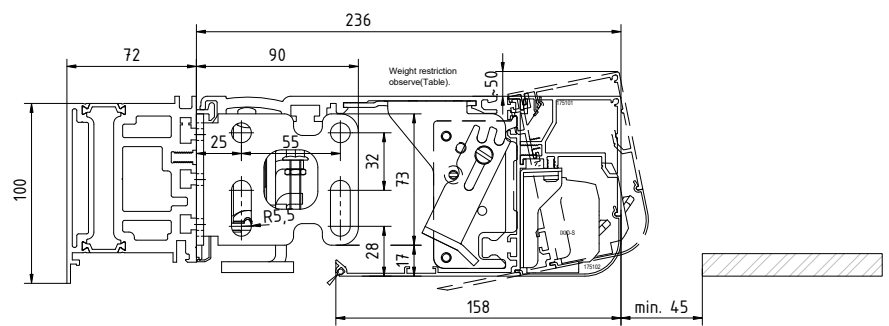
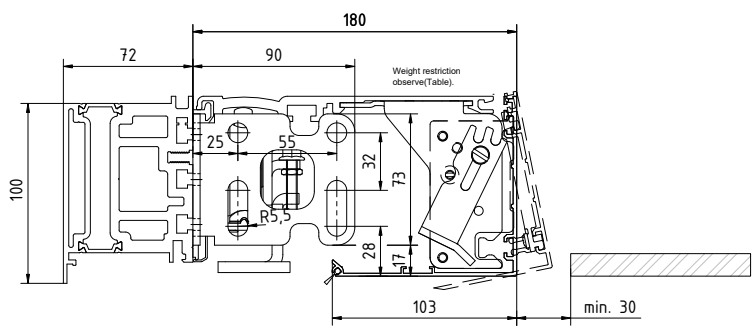
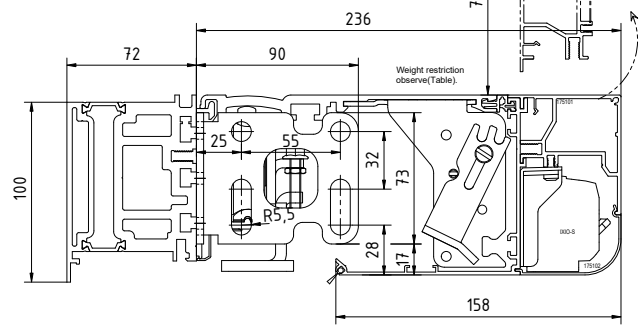
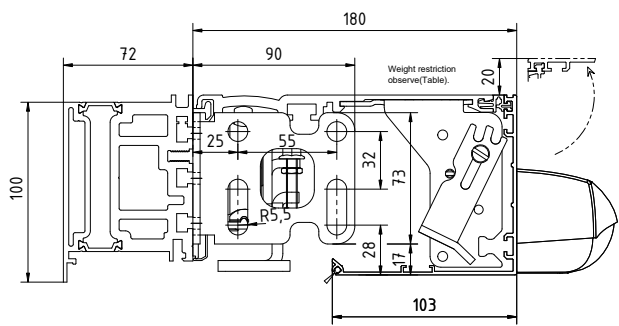
FFL	Finished floor level	Pro Green ES 250 PRO / ES 400 PRO	Weight
LW	Passage width	1-leaf	1-leaf
LH	Clearance height	LW 700 - 3000	ES 250 PRO 1 x 125 kg ES 400 PRO 1 x 250 kg
H	Installation height	B min. = 2 x LW + 153 (with fixed part / with post width 63mm)	
X	Noticed	2-leaf LW 800 - 3000	2-leaf
According to EN 16005 / DIN 18650 Construction and testing principles for automatic. For doors, this dimension may only be 4 - 8 mm.		B min. = 2 x LW + 180 (with fixed part / without post width)	Standard ES 250 PRO 2 x 125 kg ES 400 PRO 2 x 200 kg
For doors with side panels and LM supports (through mounting), from a door leaf weight of approx. 125kg - depending on the clear width of the door - either a drive suspension or the drive variant with a height of 105mm is required.			

Attention !
The safety equipment of the automatic door must correspond to the risk analysis according to DIN 18650

Rev.	Date	Name	Version	
ES PROLINE Pro Green sliding door				257893-00-6-60
Scale	1:1	including glass with fixed part / all standard leaf - four pane		1/1

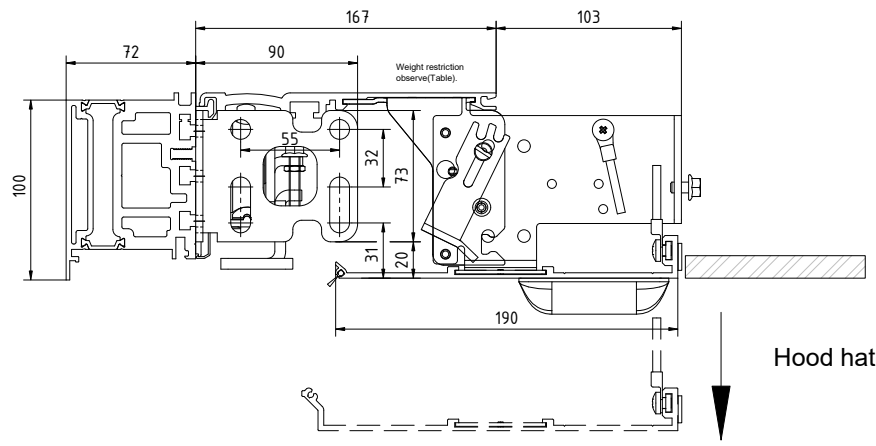
Pro Green ES 250 PRO / ES 400 PRO	Weight
1-leaf LW 700 - 3000 B min. = 2 x LW + 153 (with fixed part / with post width 63mm)	1-leaf ES 250 PRO 1 x 125 kg ES 400 PRO 1 x 250 kg
2-leaf LW 800 - 3000 B min. = 2 x LW + 180 (with fixed part / without post width)	2-leaf Standard ES 250 PRO 2 x 200 kg ES 400 PRO 2 x 200 kg

For doors with side panels and LM supports (through mounting), from a door leaf weight of approx. 125kg - depending on the clear width of the door - either a drive suspension or the drive variant with a height of 160mm is required.



Removable drive cover

Removable drive cover



Hood hatch

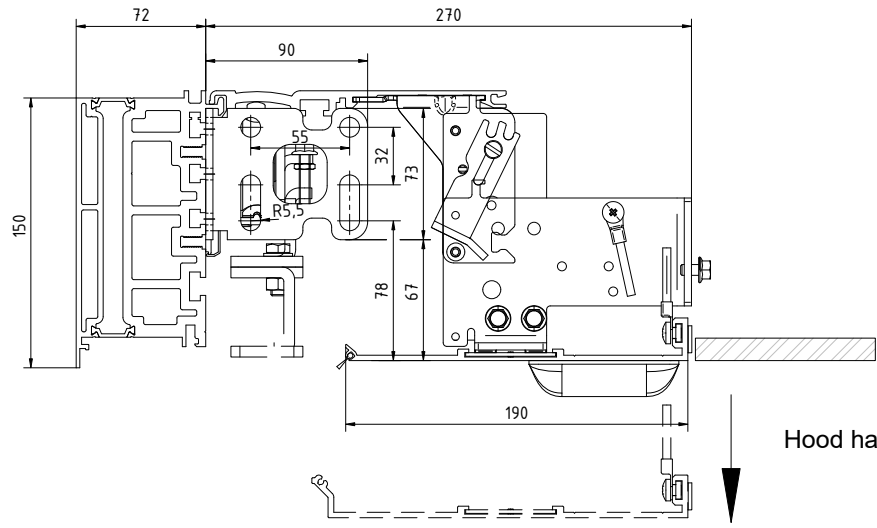
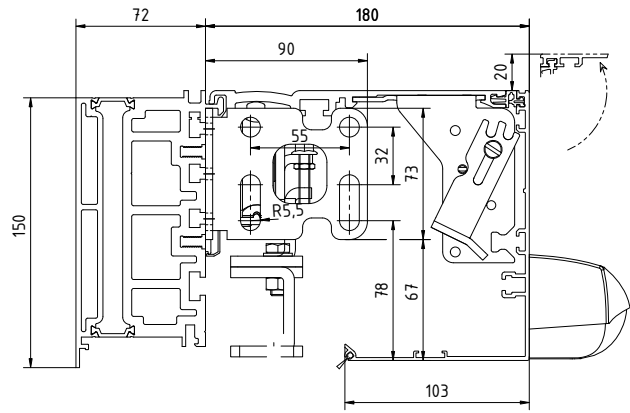
Technische Zeichnung der Antriebseinheit für Rolltüren
 2009 Copyright Kärcher AG
 Alle Rechte vorbehalten. Nachdruck, Vervielfältigung und Verbreitung, auch auszugsweise, ist ohne schriftliche Genehmigung der Kärcher AG.

Rev.	Date	Name	Version	ES PROLINE
1				
2				
3				
4				
5				
6				
7				
8				
9				
10				
11				
12				
13				
14				
15				
16				
17				
18				
19				
20				
21				
22				
23				
24				
25				
26				
27				
28				
29				
30				
31				
32				
33				
34				
35				
36				
37				
38				
39				
40				
41				
42				
43				
44				
45				
46				
47				
48				
49				
50				
51				
52				
53				
54				
55				
56				
57				
58				
59				
60				
61				
62				
63				
64				
65				
66				
67				
68				
69				
70				
71				
72				
73				
74				
75				
76				
77				
78				
79				
80				
81				
82				
83				
84				
85				
86				
87				
88				
89				
90				
91				
92				
93				
94				
95				
96				
97				
98				
99				
100				

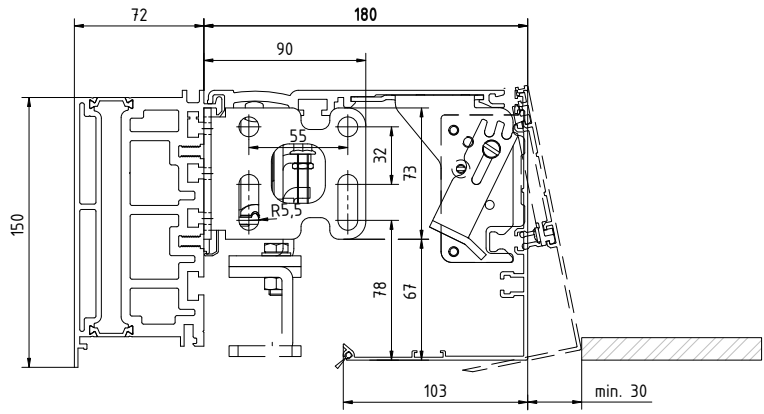
ES PROLINE
 Pro Green rolling door
 1:1
 257893-00-6-60
 mechanical covers

Pro Green ES 250 PRO / ES 400 PRO		Weight
1-leaf LW 700 - 3000 B min. = 2 x LW + 153 (with fixed part / with post width 63mm)		1-leaf ES 250 PRO 1 x 125 kg ES 400 PRO 1 x 250 kg
2-leaf LW 600 - 3000 B min. = 2 x LW + 180 (with fixed part / without post width)		2-leaf Standard ES 250 PRO 2 x 125 kg ES 400 PRO 2 x 200 kg

For doors with side panels and LM supports (through mounting), from a door leaf weight of approx. 125kg - depending on the clear width of the door - either a drive suspension or the drive variant with a height of 150mm is required.



Hood hatch

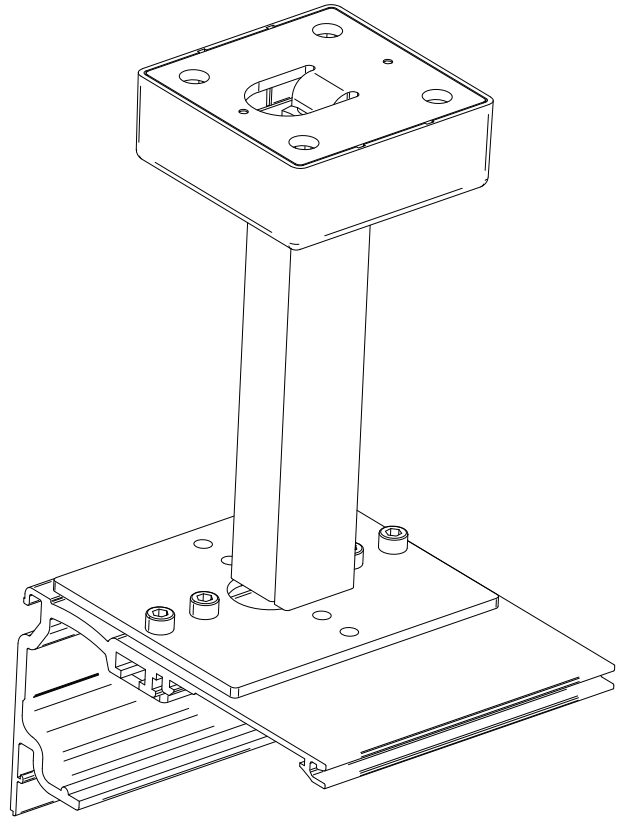
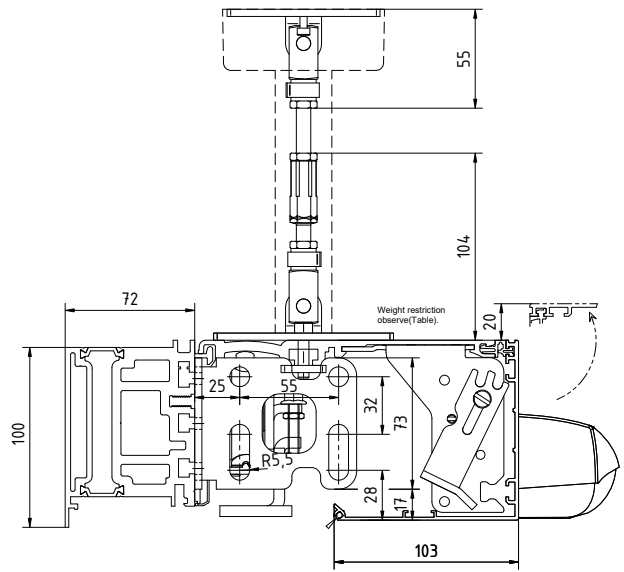
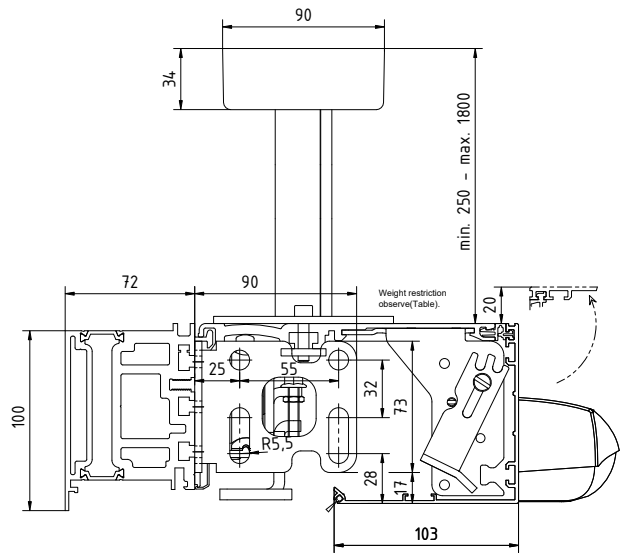


Removable drive cover

Technische Zeichnung der Antriebseinheit für Rolltüren
 2008 Copyright: Pro Green
 Alle Rechte vorbehalten. Nachdruck, Vervielfältigung und Verbreitung, auch auszugsweise, ist ohne schriftliche Genehmigung der Pro Green GmbH.

Rev.	Date	Name	Version	Scale	Author	Check	Project	Sheet
1							ES PROLINE	257895-00-6-60

1:1 ES PROLINE Pro Green rolling door 257895-00-6-60 mechanical covers



Pro Green ES 250 PRO / ES 400 PRO		Weight
1-leaf LW 700 - 3000 B min. = 2 x LW + 153 (with fixed part / with post width 63mm)		1-leaf ES 250 PRO 1 x 125 kg ES 400 PRO 1 x 250 kg
2-leaf LW 800 - 3000 B min. = 2 x LW + 180 (with fixed part / without post width)		2-leaf Standard ES 250 PRO 2 x 125 kg ES 400 PRO 2 x 200 kg

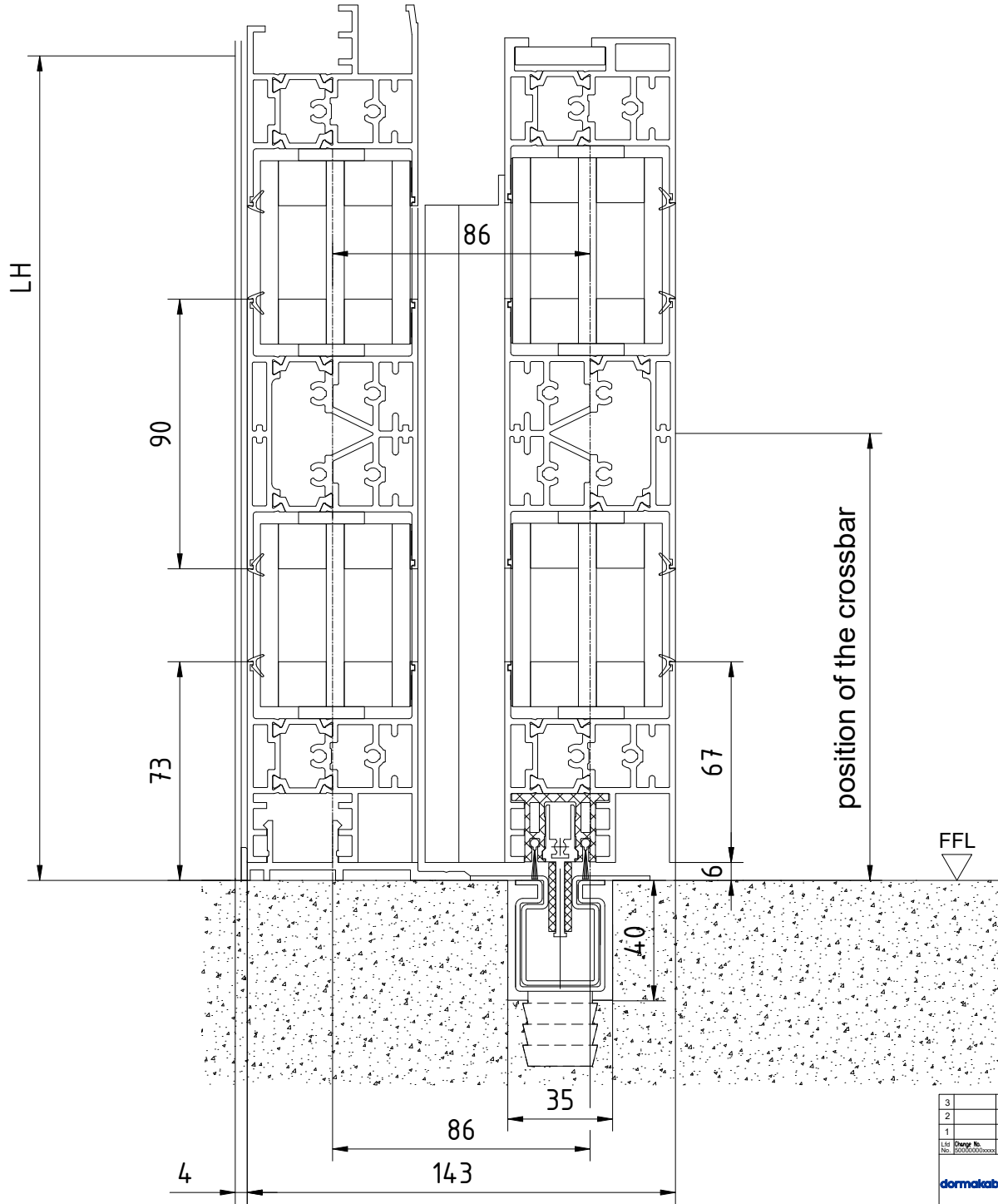
For doors with side panels and LM supports (through mounting), from a door leaf weight of approx. 125kg - depending on the clear width of the door - either a drive suspension or the drive variant with a height of 150mm is required.

Rev.	Date	Name	Version	ES PROLINE
1				
2				
3				

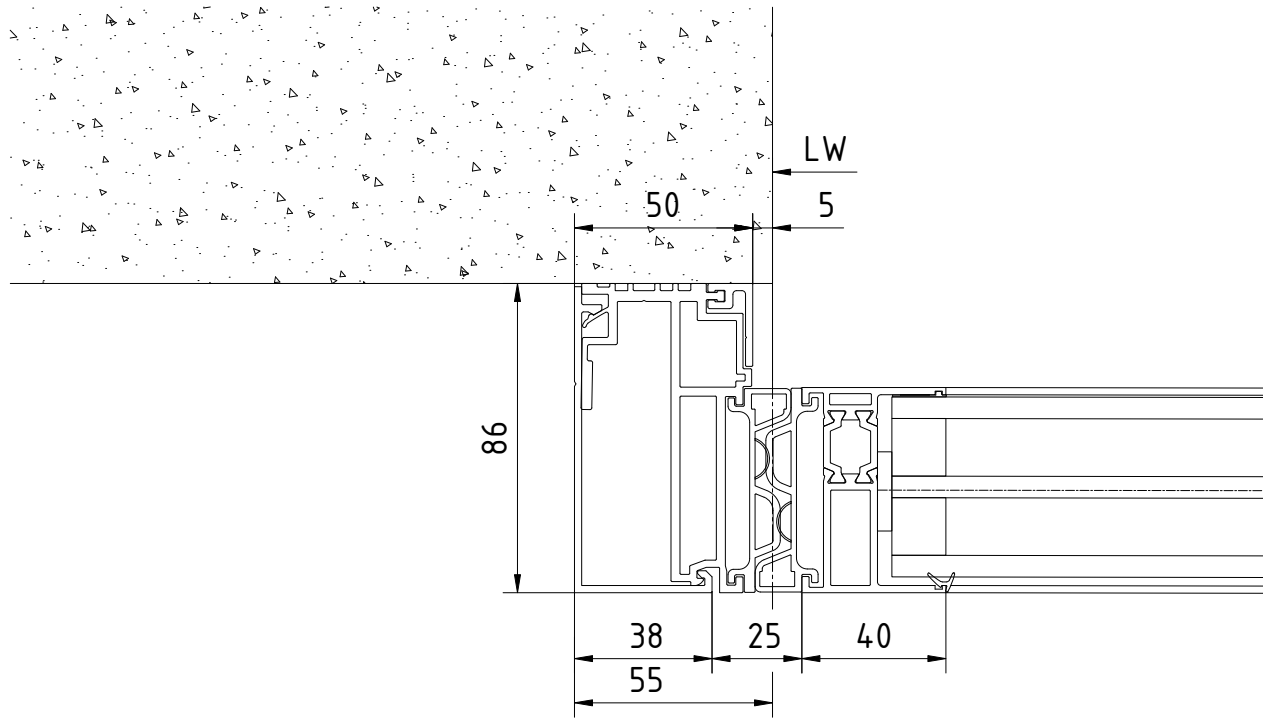
Author	AD
Check	
Release	
Drawn	
Scale	1:1
ES PROLINE	257893-00-6-60
Pro Green sliding door	
Mechanism hanger	

Copyright © 2014 Pro Green AG, Germany
 Pro Green is a registered trademark of Pro Green AG
 All rights reserved. Pro Green AG, Germany
 Pro Green is a registered trademark of Pro Green AG



Distribution and reproduction of this document,
 Use and communication of these contents is not permitted,
 design for any other application. All rights reserved. In the case
 of changes, the granting of patents or registration of other models.



3			Date	Name	Material	© dormakaba GmbH+Co.KG (DE) Ennepetal
2		Drawn	10.2021	Wenzel		
1		Tested				Issue:
Lfd. No.	Change No.	Date	Name	Stand.		Format: A2
						Replacem.:
dormakaba		Scale	ES PROLINE		Drawing-No.	Var.
		1:1	Sliding door ST FLEX Green		Type	Cond
			crosses - insulating glass - with fixed part - floor guide		Sheet	257693-00-6-60
					Var.	ven. Bl.



Distribution and reproduction of this document, as well as the use of its contents, is not permitted unless expressly permitted in writing by dormakaba. All rights reserved. Subject to the granting of patents or registrations of utility models.

3				Date	Name	Material	© dormakaba GmbH+Co.KG (DE) Ehnenpetal				
2				Drawn	10.2021	Wenzel	Issue:				
1				Tested			Format: A2 				
Lit. No. Change No. Date Name Stand.							Replacem.:				
		Scale	ES PROLINE Pro Green sliding door receiving post - insulating glass- with fixed part - floor guide				Drawing-No 257693-00-6-60	Var. 00	Typ 1	Cond 1	Sheet 1 von 11