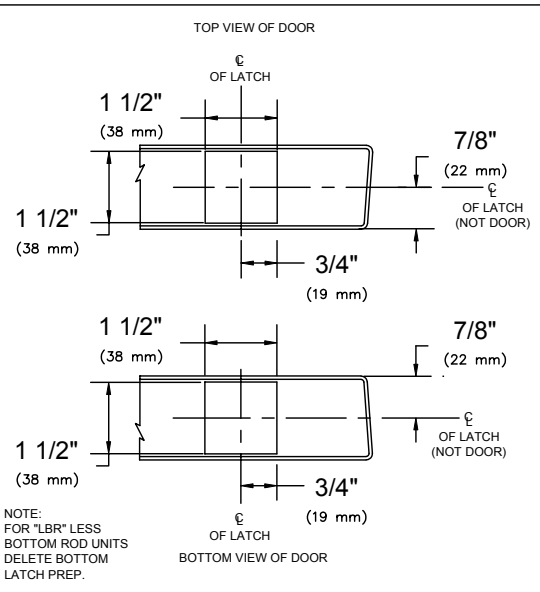
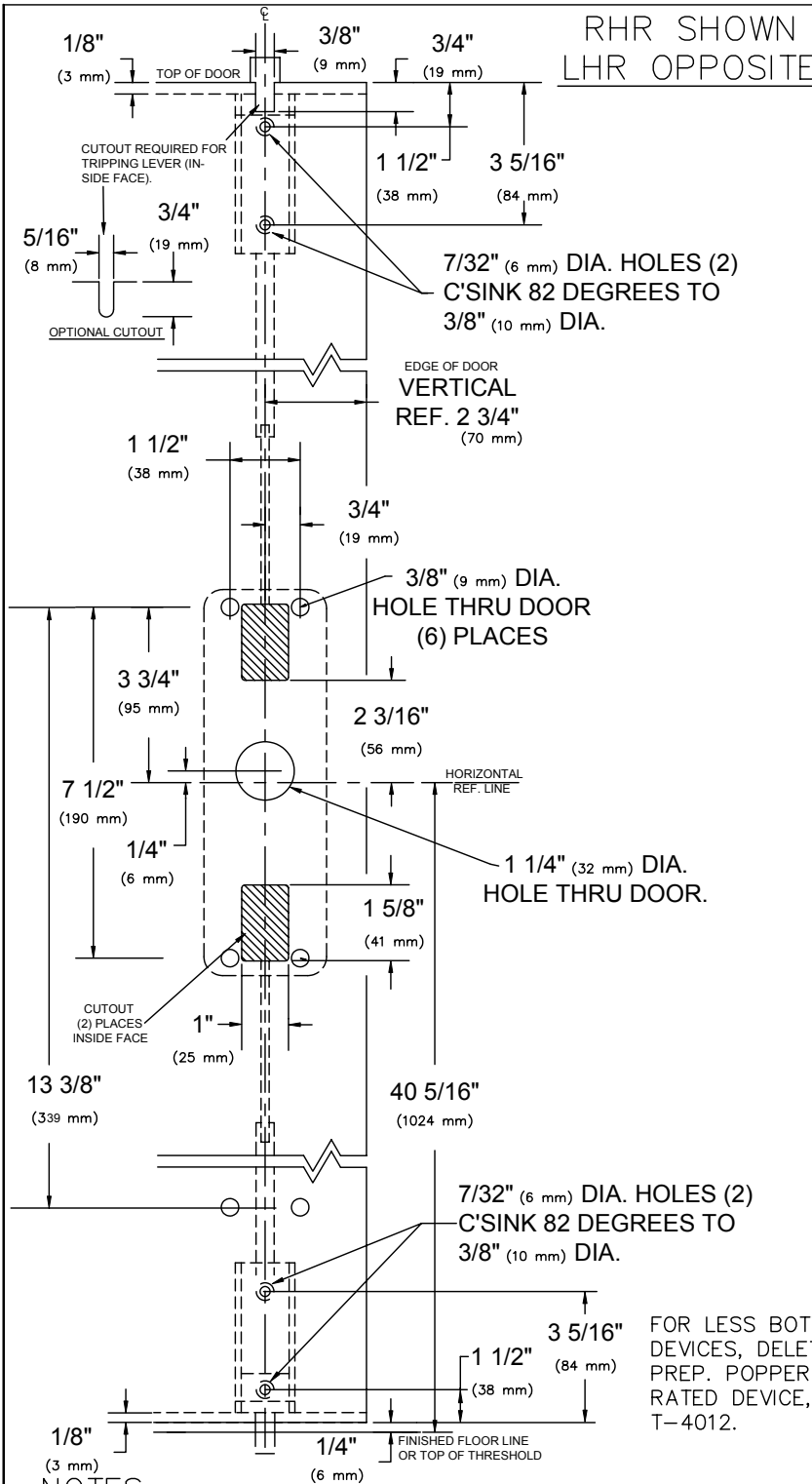
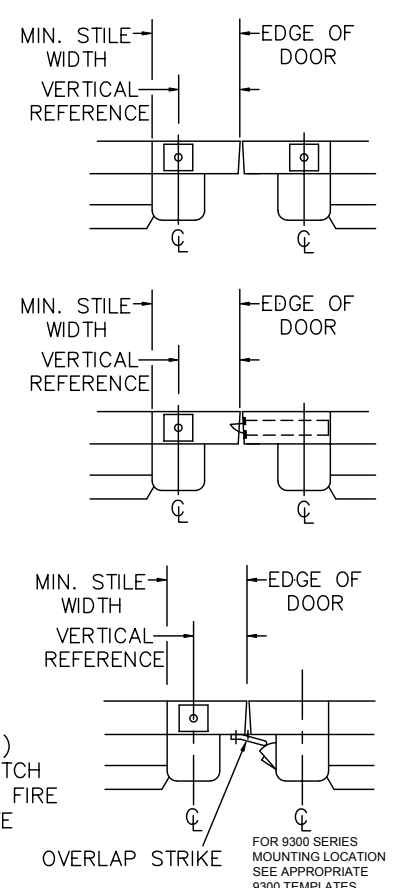


RHR SHOWN
LHR OPPOSITE



NOTE:
FOR "LBR" LESS
BOTTOM ROD UNITS
DELETE BOTTOM
LATCH PREP.



FOR 9300 SERIES
MOUNTING LOCATION
SEE APPROPRIATE
9300 TEMPLATES.

- NOTES:
1. SEE MASTER SHEET #T-0001 FOR SUGGESTED DOOR REINFORCEMENT.
 2. SEE ADDITIONAL TRIM TEMPLATE WHEN REQUIRED.
 3. DEVICE WILL COVER STANDARD SDI CUTOUT.

VERTICAL REFERENCE	MINIMUM STILE WIDTH
2 3/4" (70 mm)	4 3/16" (106 mm)

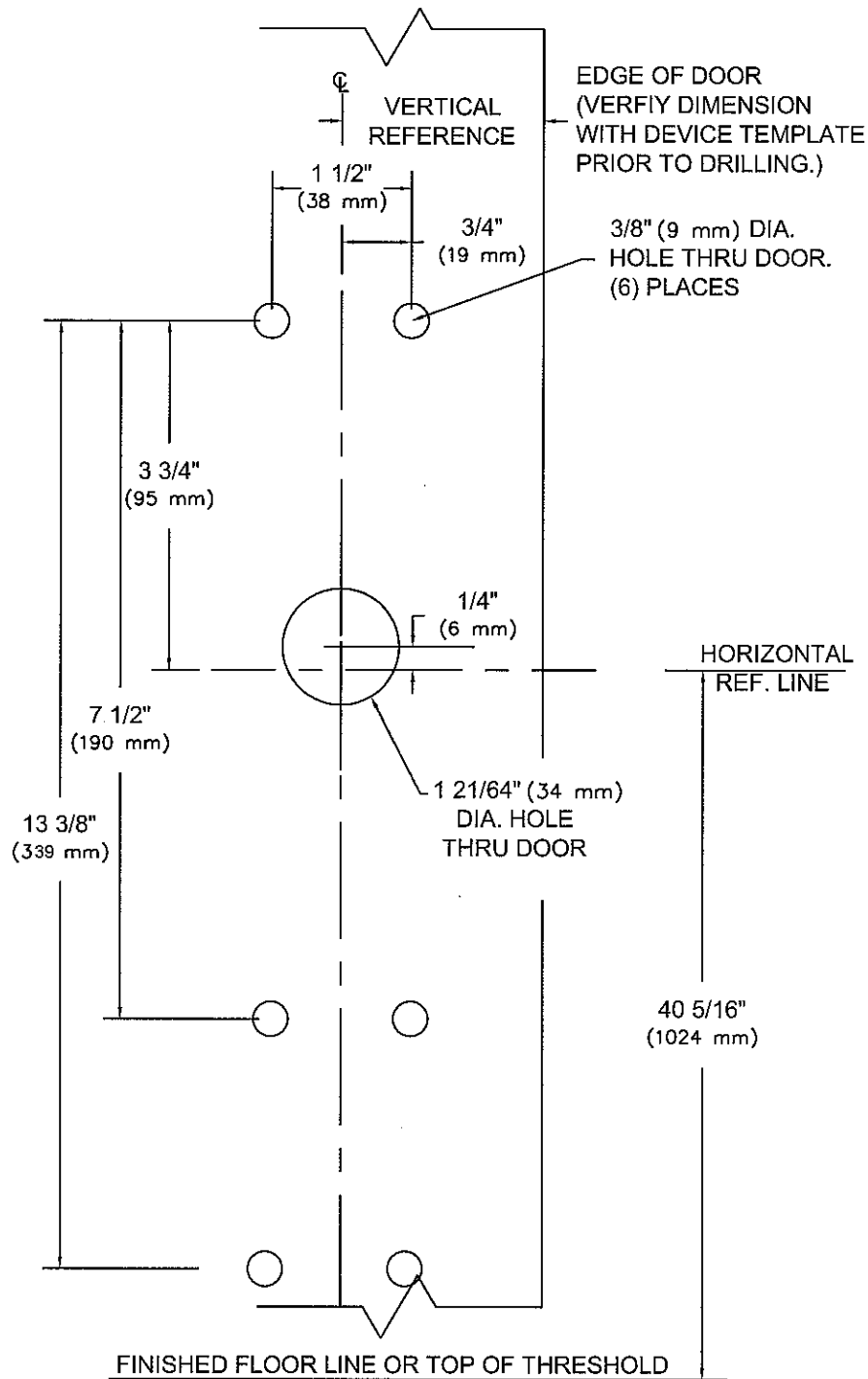
REV. No. 7 REVISION: Trim Designation DATE: 12-31-03



9100 & F9100 x V103CV or V303CV
9100 & F9100 x PTT03CV or PRT03CV
VERTICAL ROD EXIT DEVICE
(Aluminum Door)
(For Use With Optional ALD Brackets)


TEMPLATE NUMBER
T-9133AL
⑦

RHR SHOWN
LHR OPPOSITE



NOTES:

1. SEE MASTER SHEET #T-0001 FOR SUGGESTED DOOR REINFORCEMENT.
2. SEE ADDITIONAL DEVICE TEMPLATE WHEN REQUIRED.
3. "T" STYLE TRIM WILL COVER STANDARD SDI CUTOUT, REQUIRES 80CK KIT.

REV. No. 7	REVISION: Hole Dia.	DATE: 5-15-06
	V103CV, V303CV, PTT03CV & PRT03CV TRIM	TEMPLATE NUMBER T-9015 ⑦