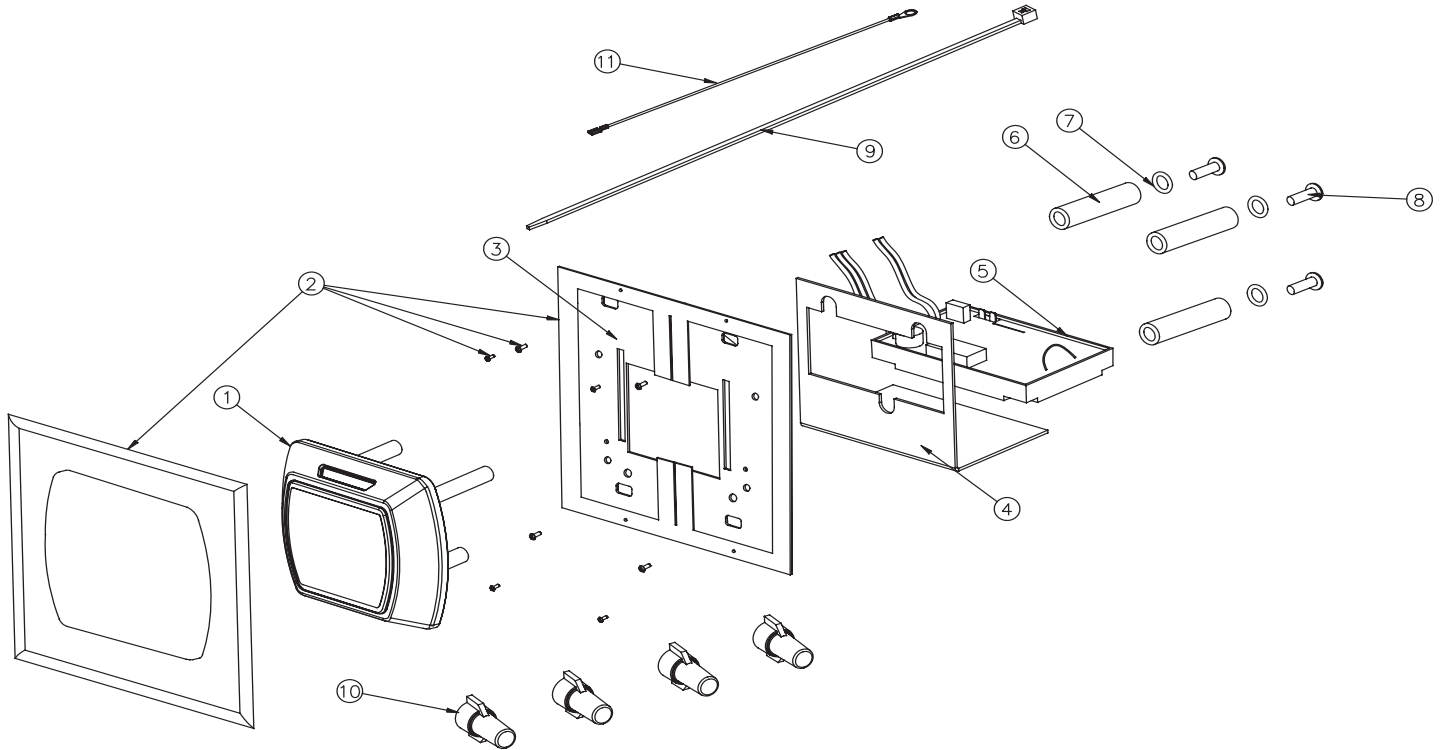


## Saflok Screwless™ QuantumII RFID RCU/ECU Installation Instructions

Please check to make sure all parts are accounted for before beginning installation.  
Do not substitute any of the parts. The use of substitute parts will result in poor performance of the lock.



### Part Number Table

Item	Part #	Description	Qty
1	A21710-COLOR	QuantumII RFID Reader Assembly	1
2	A33000-2	Cover Plate, QTMII RFID, Modified	1
3	A33010-1	Yoke, Blank, Screwless, Modified	2
4	A22770	Mounting Bracket, QTM MT, ECU	1
5	A28732	PCB Assembly / RFID MT2	1
6	A37010	Sleeve, QuantumII RCU	3
7	A37000	Washer, Flat, #8 Screw	3
8	73400-014	Screw, #8-32 /1/2" PH, Philips	3
9	A27490	Tie Wrap, 14", RCU	1
10	55250	Nut, Wire	4
11	A28360	Ground Wire Harness RCU PCB	1

All information contained herein, including but not limited to product pricing and other intellectual property, is confidential and intended for the sole use of the addressee(s) so named. Any misuse of this confidential information contained herein may result in legal action by Computerized Security Systems dba SAFLOK and its parent company.

# Product Description

The QuantumII™ RFID screwless remote control unit (RCU) controls access to electric strikes, electric exit devices, electromagnetic locks, and parking gates. When wired into elevator car controls by a certified technician, the unit also performs as an elevator control unit (ECU). Communication between the keycard and the reader is conducted via RF waves. Positioning the keycard over the reader will momentarily switch power to the electrified locking device.

## Pre-installation Requirement

Be sure to investigate the switching current and voltages required by the electric access control hardware. The QuantumII RFID screwless RCU is equipped with a relay that can be configured either “normally open” or “normally closed,” to function properly with the application. The relay is rated for five amps at 250 VAC or five amps at 30 VDC. Review your local fire and electrical codes before installing this product.

# Installing the QuantumII RFID SCREWLESS RCU

**Note:** The QuantumII RFID screwless RCU is designed for installation with a double-gang switch box. Please check your local building codes before purchasing an electrical box that is appropriate for your installation's location and climate (interior or exterior).

1. Position the electrical box in an accessible location. The box should be in close proximity to the access opening as the user will have only five seconds to open the door before the unit relocks.
2. Fasten the electrical box in position using the appropriate fasteners (not included). Be sure that the fastener heads will not impede the space required for the electronics and connections within the electrical box.
3. Run the appropriate wires to the electrical box.
4. Make the necessary wire connections using the wire nuts (provided). Refer to the schematic diagram on the following page.
5. Secure the faceplate to the electrical box with the four phillips head screws (provided with decorative plate). Tighten the screws.
6. Place the decorative cover plate over the RFID reader and snap the cover plate onto the face plate.  
\* Note: Review the inside of the decorative cover plate and position the plate with the part number at the top as the decorative cover plate is not symmetrical.
7. Program and test the unit as discussed in the *Quantum User Instructions*.

# Schematic Diagram

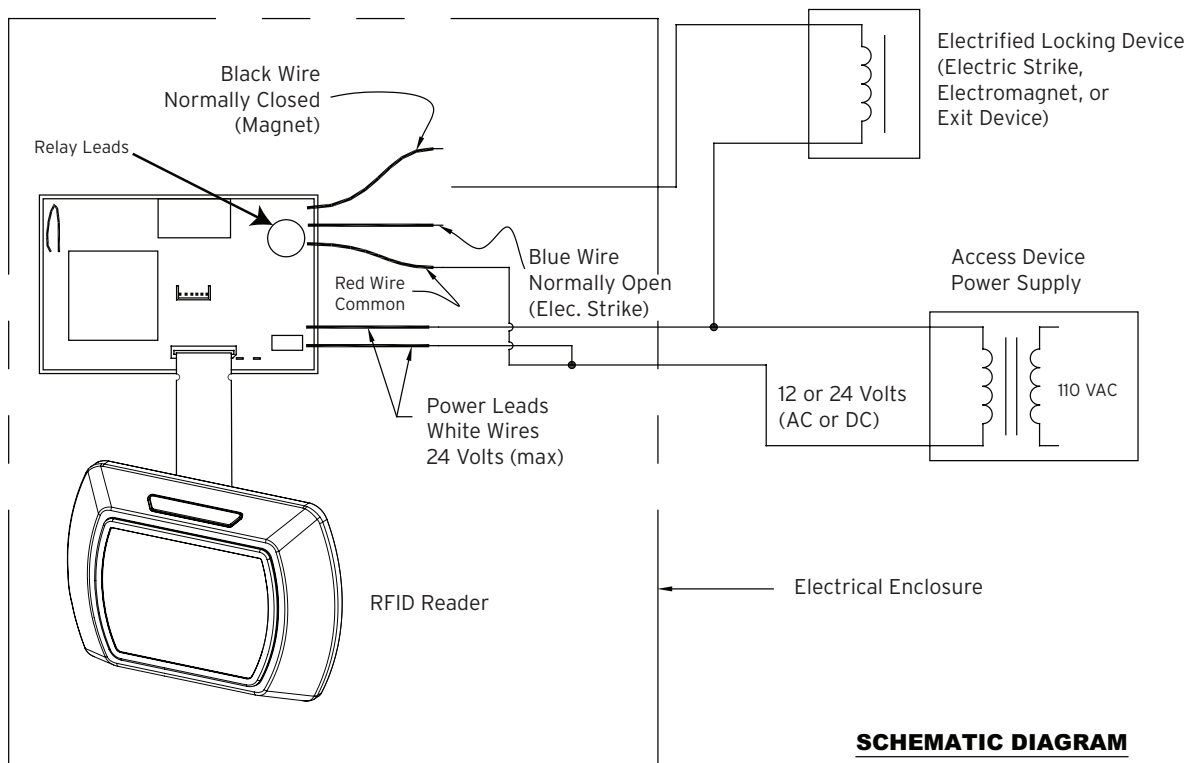
## Power Leads

The QuantumII RFID screwless RCU requires 12-24 volts AC or DC input. Two wire leads (white insulation) are provided for supplying power to the reader. Ensure that voltage going to the reader does not exceed 24 volts. Any 110 VAC power supplies necessary for rectification shall be in separate enclosures and rated properly.

## Relay Leads

Three wire leads (red, black, and blue) are provided for switching power to the electrified locking device attached to the gate, door, doorframe, etc.

- The red lead is common. It is always connected.
- The black lead is normally closed (NC). It is used for electric lock devices like electromagnets.
- The blue lead is normally open (NO). It is used for electric lock devices like electric strikes.



**FCC Warning:** The users of this equipment shall not change or modify the equipment in any way, or they could void their authority to operate the equipment under FCC rules.

**Questions?** Call Customer Service at 800.999.6213 and select option 3.



For worldwide office locations and contact information, visit us at [www.kabahospitality.com](http://www.kabahospitality.com)

**USA · Canada**  
Phone: **877.272.3565**

**Europe · Middle East · Africa**  
Phone: **33.1.30.13.04.04**

**Asia**  
Phone: **86.10.5861.3561**

Manufactured under one or more of the following patents:

U.S.: 4,177,657; 4,411,144; 4,534,194; 4,890,870; 5,198,643;  
5,477,041; 5,820,177; 5,986,564; 7,051,561; D494,841; D501,131  
D512,899; D519,021; D531,629; D533,009; D533,047; D533,762;  
D533,763; D535,629 CANADA: 1,252,854; 1,298,902  
U.K. 2,010,375  
Other U.S. and foreign patents pending

SAFLOK reserves the right to modify the characteristics and features of all products in this publication.  
© 2011 SAFLOK, all rights reserved.