

Interior Glass Systems

MUTO Ceiling Mount Recessed (CE-R)



Hidden convenience.

Designed for maximum transparency, MUTO Ceiling Mount Recessed (CE-R) is the newest addition to the MUTO family of manual sliding glass doors.

MUTO CE-R systems fit within a 3-3/4" (95) ID minimum width ceiling channel, while still providing the same features for enhancing ease of operation and convenience as non-recessed models. These optional features include:

- DORMOTION damping mechanism (DORMA SoftClose®)
- Door position status indicator
- Self-closing

Door adjustment remains hassle-free with customized tooling that integrates with the slim channel.

MUTO CE-R offers all the solutions available in non-recessed configurations: single- or double-door, with sidelites, self-closing, and synchro.

- Suitable for monolithic and tempered laminated glass, and wood doors.
- Supports door weights up to 330 lb (150 kg).

Note: Door width and height can vary; must not exceed weight limit



MUTO Recessed Mount CE-R systems provide the same features for enhancing ease of operation and convenience as non-recessed models.

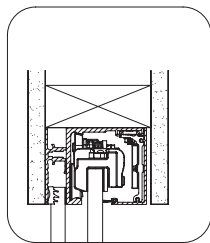
Specifications

Max weight capacity	330 lb (150 kg)
Height adjustment	+ /- 3/16" (5)
Tempered laminated/ monolithic glass	Yes
Glass thickness	5/16"-1/2" (8-12)
Wood door thickness	Up to 1-31/32" (50)
ANSI/BHMA Certified A156.14 Grade 1	Yes
Warranty	2 Years
Cushioning for closing/opening cycle	DORMOTION
Self-close	Yes

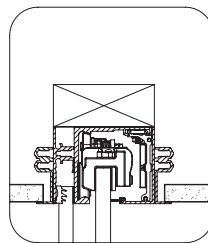
Note:

Width measurements are shown as inches followed by millimeters; for example, 1" (25).

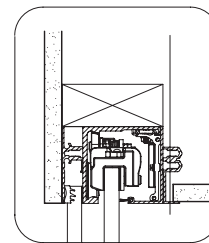
Multiple mounting options



Option 1
Recessed in header

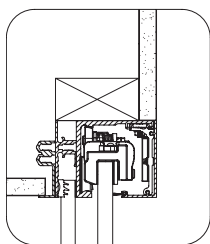


Option 2
Recessed in ceiling

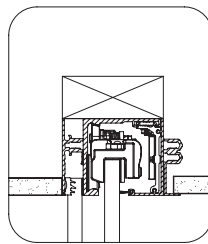


Option 3
Recessed flush x vertical

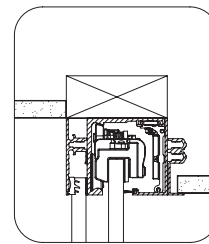
MUTO CE-R offers 7 options for recessing the sliding system within drop ceilings, headers, or drywall.



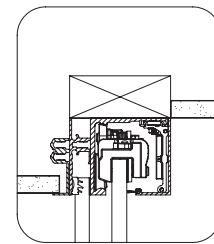
Option 4
Recessed flush x vertical



Option 5
Recessed in ceiling



Option 6
Recessed, one side only



Option 7
Recessed, one side only

DORMA USA, Inc
Dorma Drive
Drawer AC
Reamstown, PA 17567
800.523.8483

DORMA Canada
1680 Courtney Park Dr
Unit 13
Mississauga
ON L5T 1R4
800.387.4938