

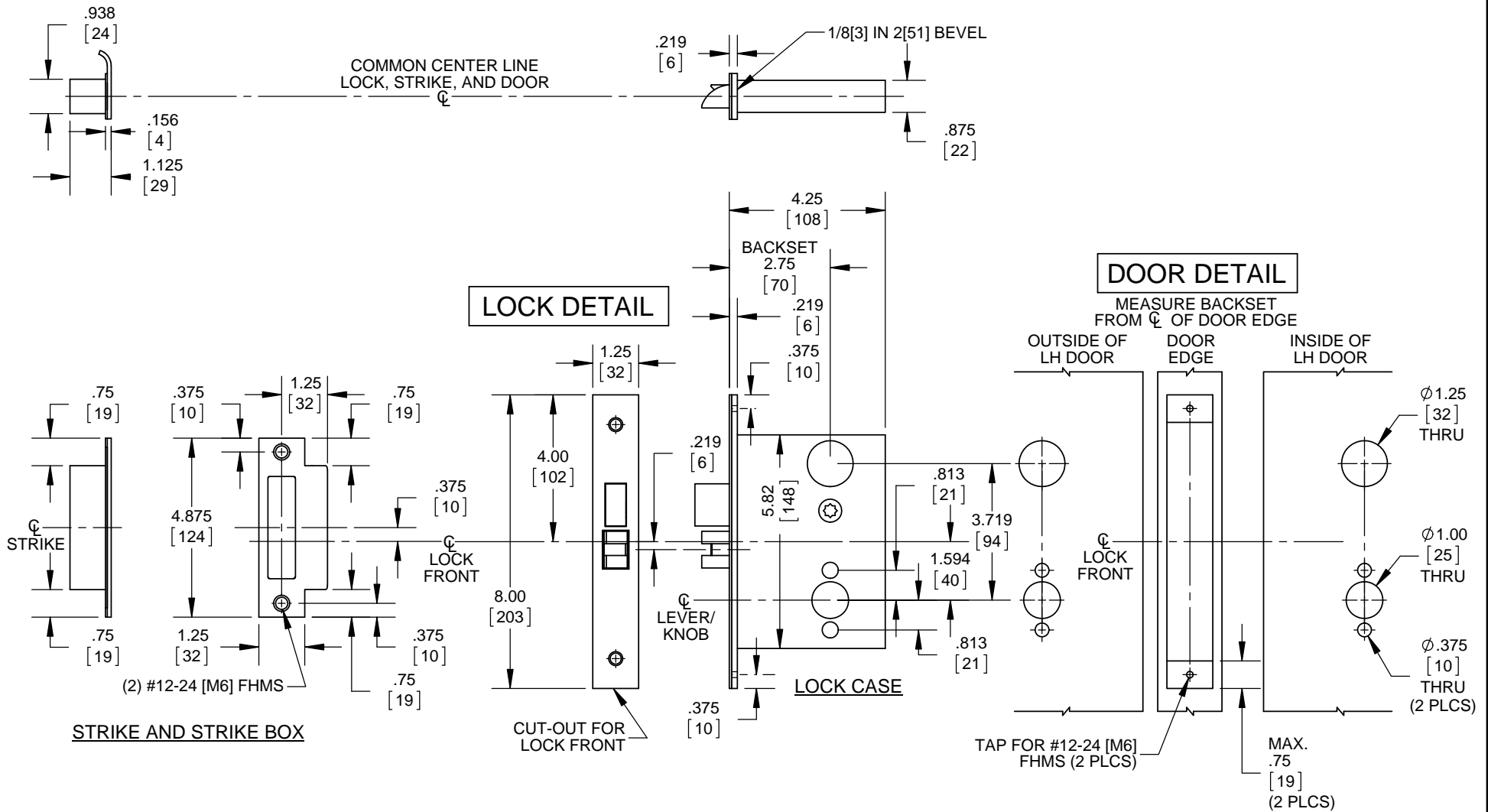
- NOTES:
1. DIMENSIONS ARE IN INCHES/[MM].
 2. DO NOT SCALE DRAWING.
 3. FOR #12 FHWS, USE 9/64" (.140") DRILL.
 4. FOR #12-24 FHMS, USE #16 (.177") DRILL & TAP.

DOOR CUT-OUTS AS INDICATED UNDER DOOR DETAIL.
FRAME FOR STRIKE SHOWN UNDER LOCK DETAIL.

WOOD DOORS - A&B Rose Trim, M Escutcheon Trim
M9957, M9958, M9966, M9967, M9968, M9974



DORMA Architectural Hardware
Reamstown, PA 17567



- NOTES:
1. DIMENSIONS ARE IN INCHES/[MM].
 2. DO NOT SCALE DRAWING.
 3. FOR #12 FHWS, USE 9/64" (.140") DRILL.
 4. FOR #12-24 FHMS, USE #16 (.177") DRILL & TAP.

DOOR CUT-OUTS AS INDICATED UNDER DOOR DETAIL.
FRAME FOR STRIKE SHOWN UNDER LOCK DETAIL.

STEEL DOORS - A&B Rose Trim, M Escutcheon Trim
M9957, M9958, M9966, M9967, M9968, M9974



DORMA Architectural Hardware
Reamstown, PA 17567