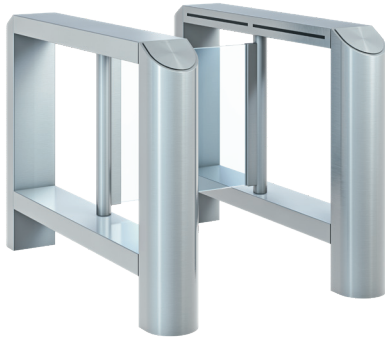


HSB-E10 sensor barriers

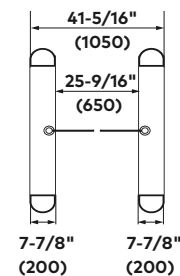
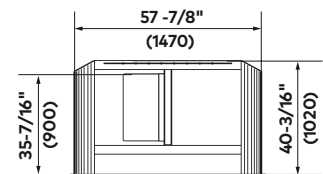
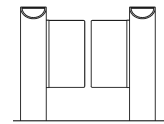
Economical



Economical units offer a minimal installation length and a simple sensor system monitors the passage area by offering single passage in both directions.

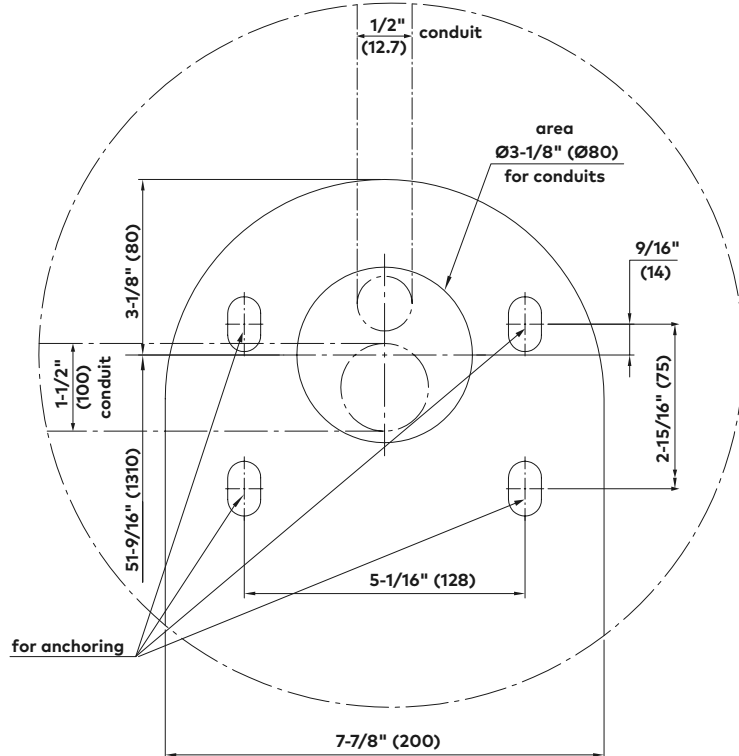
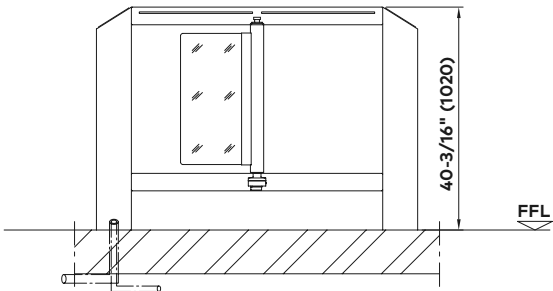
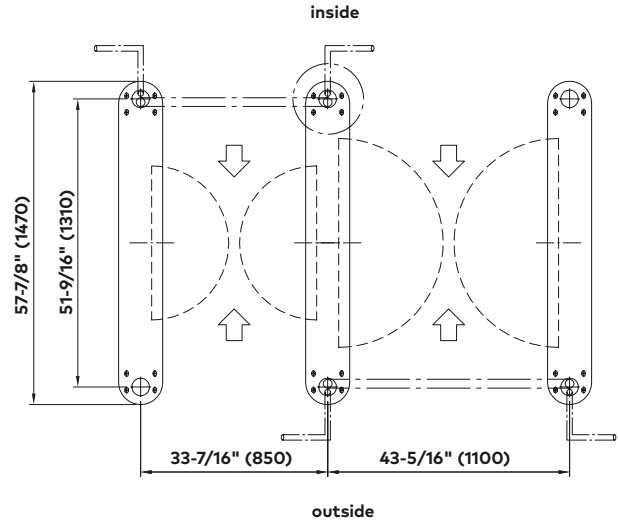
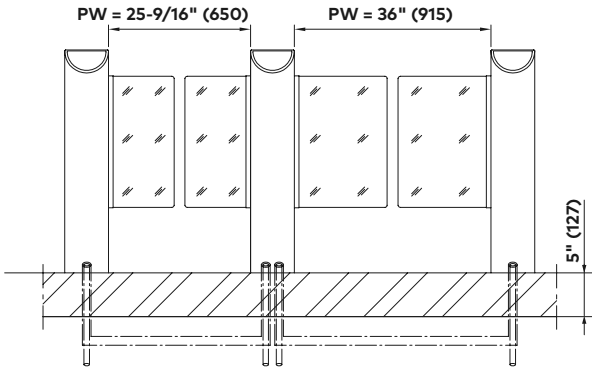
Standard units	HSB-E10
	Note: Description of single unit
Interlock height	40-3/16" (1020)
Interlock length	57-7/8" (1470)
Passage width	25-9/16" (650)
Total width	41-5/16" (1050)
Housing, base columns, guiding elements	AISI 304 stainless steel with satin finish.
ADA compliance	36" (915) width available.
Barrier elements	Two door leaves made of transparent polycarbonate; upper edge 35-7/16" (900). Swinging area monitored by separation sensors.
Security	Passage area monitored by simple sensor system with our shortest installation length (simple level of single passage monitoring in both directions).
Finish	Stainless steel semi-gloss smooth finish.
Safety	Low energy drive with energy content less than 1.18 lb/ft.
Function	Type 2—power assisted motion; two servo-positioning drives/ electrically controlled in both directions.
Drives	Integrated in the swing tube.
Operating modes	Optical. Normally closed. Normally opened. (Barriers close on tailgate event.)
Electrical equipment	Control system and power supply integrated in the unit.
Power supply	110 – 230 VAC, 50/60 Hz. 368 VA
Standby power consumption	17 VA
Standard adjustment in case of power failure	Door leaves move freely.
Installation	Dowelled on finished floor level, FFL. Not suitable for outdoor installation.
Protection classes	Housing IP43, components conducting supply voltage IP43.

HSB-E10



HSB-E10

Installation drawings



Note

Dimensions shown as inches followed by millimeters; for example, 1" (25).