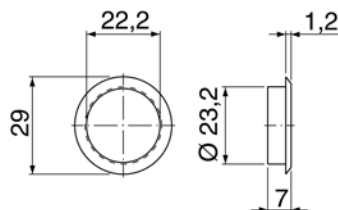
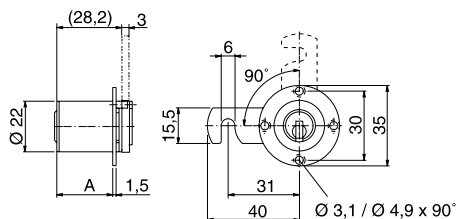


Furniture Cylinders

MZ.1129



Rosette 1008A

Application:

Lock cylinders for furniture doors, left and right hinged
Latch rotation to lock 90°, key rotation 360°

Specification:

Housing supplied in solid natural brass with nickel plating
Reversible key made from nickel silver
Standard cams 1129-16 (right) or 1129-20 (left)
Round fixing plate BS-39 (for left and right doors)

Included with the cylinder:

2 reversible keys (See "Special Functions and Keys" for key options)
Plastic key clip in dark red for Kaba penta, in dark blue for all other systems
Security Card for ownership registration and ordering duplicate keys
Installation and Maintenance Instructions

Premier Systems:	6 Kaba penta	7 Kaba quattro plus	12 Kaba gemini plus
Patent expired systems	4 Kaba quattro S	2 Kaba gemini S	
Old systems	3 Kaba quattro ¹⁾	1 Kaba gemini ¹⁾	
Dealer systems	5 Kaba experT ²⁾	19 Kaba maTriX ²⁾	
Old dealer system		9 Kaba gemini T ²⁾	

Lengths Standard - from 25 to 75 mm in 5 mm steps
60 and 70mm available on request only

Options (See „Special Functions and Keys“ for details)

BAZ	Construction key	BAZ3	Construction key 3
RE	Right hinged door	LE	Left hinged door
OB	Top hinged door	UN	Bottom hinged door
1129-*	Cam shape - see page K.114 for details		

Accessories

Order Code	Drawing No.	Description
ROSETTE.1008A.*	1008A-25	Slide on rosette for furniture cylinder Ø 22 mm, available in all surface finishes (* specify surface finish code at the end of the order code)

Standard Surface Finishes

NI - Nickel plated	MS - Brass natural	
--------------------	--------------------	--

Optional Surface Finishes

BH - brown light	MP - Brass polished	CR - Chrome standard
BM - brown medium	MSA - Brass antique	CRM - Chrom dull
BD - brown dark		CRP- Chrome polished
NIC - chemically nickel plated		
GO - gold plated		

Order Code System

System Code.Cylinder.Type.Length.Surface finish.cam shape.hinge position.Option

Example:

6.MZ.1129.25.NI.1129-17.RE = penta.furniture cylinder.1129.25mm long.nickel plated.cam shape 1129-17.right hinged door

Please note that certain options, finishes and dimensions may be subject to extended factory lead times. Please contact our office via email on sales.uk@kaba.com or telephone (0) 870 000 5625.

¹⁾ Kaba gemini and Kaba quattro are only offered for existing master key systems.

²⁾ Kaba experT, Kaba maTriX and Kaba gemini T are only sold to authorized dealers.