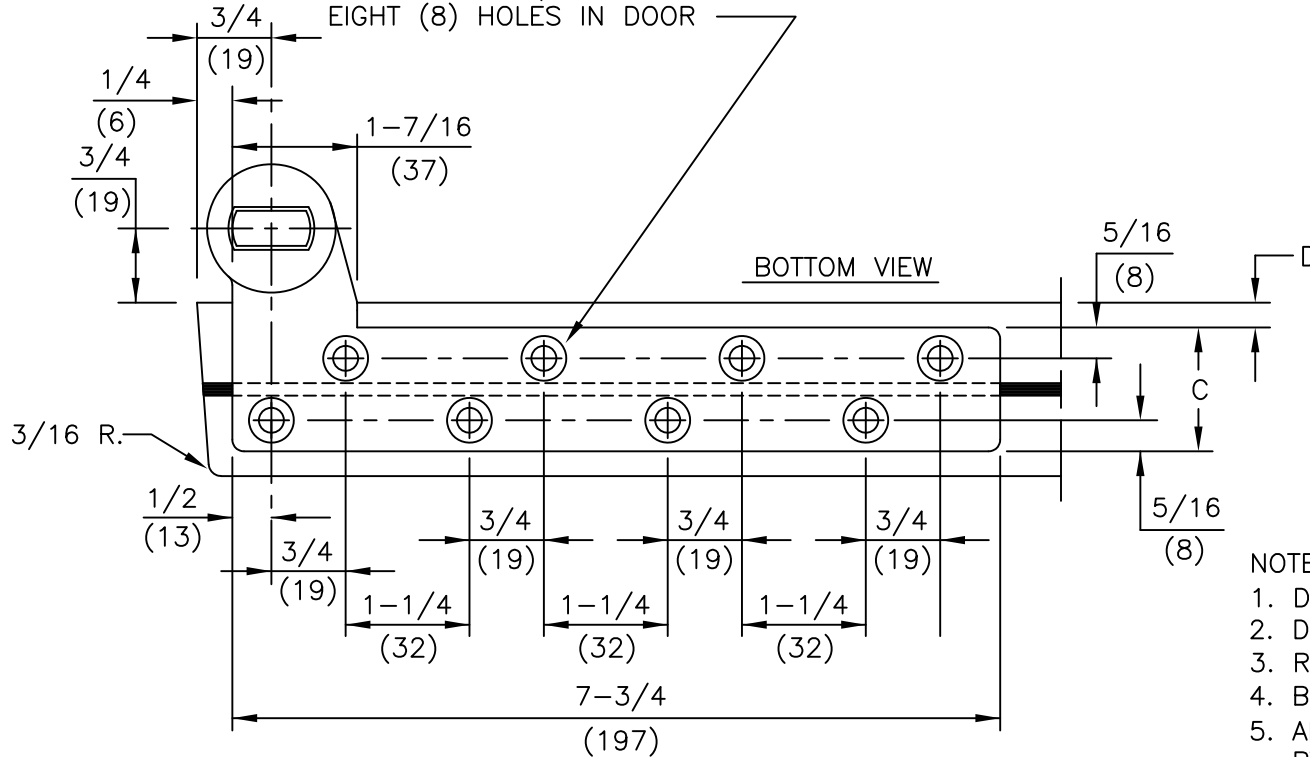


FOR 1/4-20 MACHINE SCREWS USE No.7 DRILL
 FOR No.14 WOOD SCREWS USE 5/32" DRILL
 EIGHT (8) HOLES IN DOOR

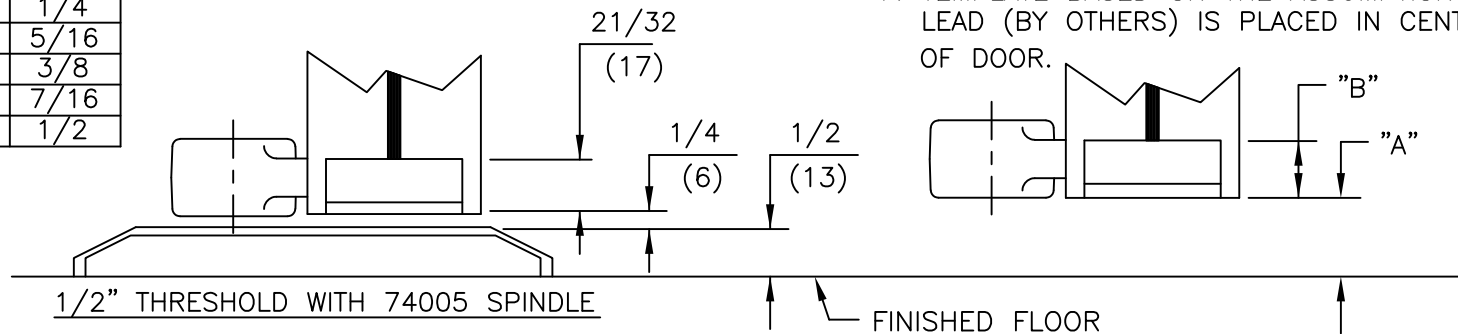


SPINDLE EXT.	"A" CLEARANCE	"B" MORTISE DEPTH
74003	3/8"	25/32"
74003	9/16"	19/32"
STD.74005	3/4"	19/32"
74007	7/8"	19/32"
74010	1"	19/32"
74012	1-1/16"	19/32"
74015	1-1/8"	19/32"
74020	1-3/8"	19/32"
74025	1-9/16"	19/32"
74030	1-3/4"	19/32"

NOTES

- DO NOT SCALE DRAWING.
- DIMENSIONS ARE IN INCHES/(MM).
- RIGHT HAND DOOR SHOWN.
- BEVEL HEEL EDGE OF DOOR 1/8" IN 2".
- ALL NECESSARY REINFORCEMENT FOR ARM BY OTHERS.
- FOR DOOR THICKNESS NOT LISTED USE NEXT SIZE NARROWER ARM.
- TEMPLATE BASED ON THE ASSUMPTION THAT LEAD (BY OTHERS) IS PLACED IN CENTER OF DOOR.

DOOR THICKNESS	DIM "C"	DIM "D"
1-3/4"	1-1/4"	1/4"
2"	1-3/8"	5/16"
2-1/4"	1-1/2"	3/8"
2-1/2"	1-5/8"	7/16"
3"	2"	1/2"



ITEM No. 75343, 75343-2, 75343-2 1/4, 75343-2 1/2, 75343-3
 3/4" OFFSET HEAVY DUTY BOTTOM ARM FOR LEAD LINED OR EXTRA HEAVY DOORS
 FOR NON-FIRE OR 3HR. RATED DOORS
 FOR USE WITH 7471HD FLOOR BEARING

