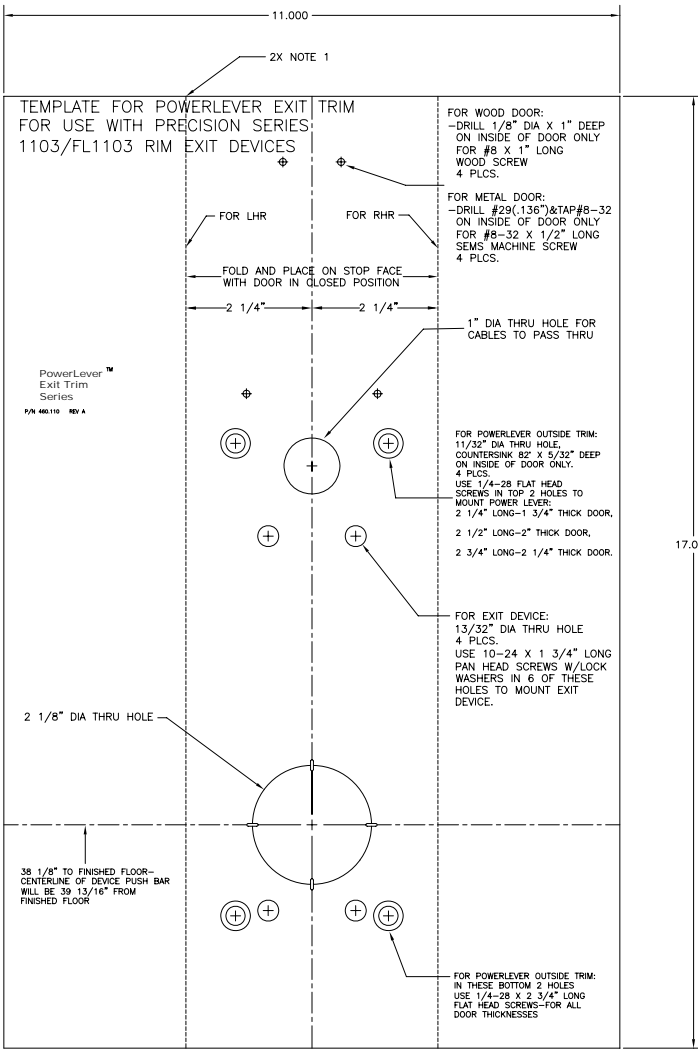


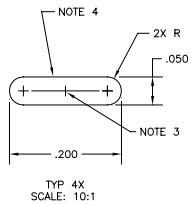
LIMITED RIGHTS IN DATA  
 THIS DOCUMENT CONTAINS PROPRIETARY AND TRADE  
 SECRET DATA OF THE M&H-HALTON GROUP.  
 IT IS NOT TO BE USED, REPRODUCED OR RELEASED IN  
 WHOLE OR IN PART FOR ANY PURPOSE OTHER THAN  
 THAT AUTHORIZED BY THE M&H-HALTON GROUP.  
 AUTHORIZATION MUST BE IN WRITING.

REV.	ECD #	REV. BY	CHKD BY	DATE
A	0791			08AUG01



- NOTES
- 1) PERFORATE ALONG DASHED LINE TO AID FOLDING, APPROXIMATELY 10 PERFORATIONS PER INCH. PERFORATIONS TO BE WITHIN .005 OF PRINTED DASHED LINE.
  - 2) BLACK INK ON WHITE PAPER
  - 3) TO BE CENTERED ON 2 1/8" DIA AT THE 4 POINTS ON CIRCUMFERENCE AS SHOWN
  - 4) PERIMETER TO BE PERFORATED SO CAN PUNCH OUT
  - 5) TOLERANCES TO BE ±.005 UNLESS OTHERWISE SPECIFIED
  - 6) ALL TEXT AND DIMENSIONS SHOWN WITHIN THE 11 X 17 OUTLINE IS TO BE PRINTED

**REFERENCE ONLY, NOT TO SCALE**  
**DO NOT USE AS A DRILLING TEMPLATE**  
**CALL 800-849-8324**



REF. ASME Y14.5M-1994

M&H-HALTON		749 W. SHORT ST. LEXINGTON, KY 40508 PHONE 606-358-4744	
TITLE	TEMPLATE, PL EXIT TRIM, PRECISION	DR.	APP.
MATERIAL	70 LB WHITE PAPER	CHK.	DATE
SCALE	NONE	SHEET	1 OF 1
SIZE	D	SIZE	460.110
REV.	A		