

# 3000 Series Crane Revolving Doors



Crane SS3000-S2

**Offering three levels of security, a Crane 3000-S Security Revolving Door can be fabricated to meet your security goals precisely, to seamlessly interface with your building's security system, and to match your budget.**

- Every Crane 3000 Series revolving door is a work of art as unique as the building it is a part of.
- Virtually every component of the door—push bars, canopies, glass panels, etc.—can be customized to complement the building's exterior and interior design.
- Every revolving door is designed, engineered, and fabricated by union craftsmen in our Chicago factory.

## 3000-S Series Security Revolving Door

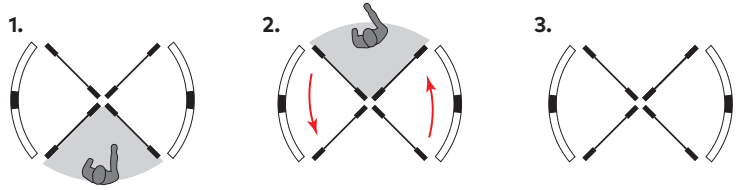
Every building is a story and the entrance sets the scene. By selecting a Crane 3000 Series revolving door, the scene is limited only by imagination and vision. Any building can benefit from the value of a revolving door; some buildings deserve the stylized choice of the industry's signature product, a Crane 3000. Whether the design includes the old-world elegance of mahogany or a sleek and contemporary steel finish, or anywhere in between, the 3000 offers premium construction and unrivaled custom design. The Crane 3000 Series is the only fully formed and welded revolving door in the market with a 5-year standard warranty.

The 3000-S Series offers three increasingly secure revolving doors. Each level can be set up with one-way or two-way security and integrated into the existing security system. Various operating modes can be combined or customized per your project's specifications. Be assured that your Crane 3000-S door will be beautiful as well as secure.

### S1 Security Door

The entry-level solution for a secure entrance, the 3000-S1 is a manually operated revolving door with access control features (electromagnetic lock). The S1 Security Door is the only one of its kind on the market.

### S1 manual door: entry-level security solution



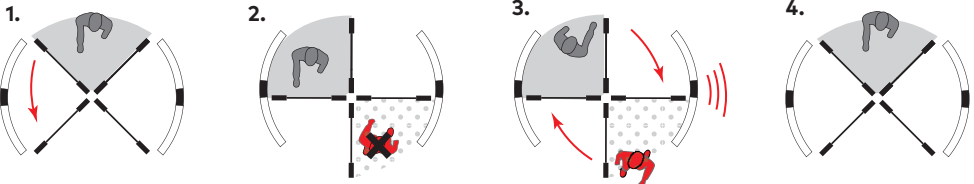
1. **Authorized Person** swipes card and enters door compartment. 2. **Authorized Person** pushes manual door 180° and exits. 3. Revolving door locks and remains locked until the next **Authorized Person** swipes card.

**NOTE**  
All illustrations show the secure side of the revolving door on top.

### S2 Security Door with Anti-Tailgating

The 3000-S2 is a technology-driven, automatically operated revolving door that prevents unauthorized access and minimizes impact on traffic flow. Anti-tailgating prevents unauthorized access in the opposite direction and in the next compartment. S2-level security provides a strong solution for projects demanding both highly secure entrances and high traffic flow.

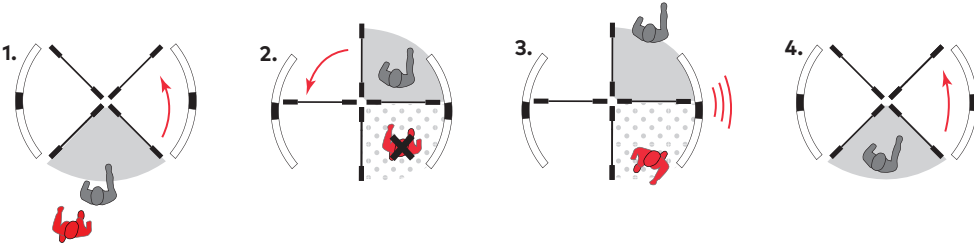
### S2 automatic door: technology driven solution (two scenarios shown)



1. **Authorized Person** enters compartment leaving secure area. 2. **Intruder** enters opposite compartment. 3. Sensors detect **Intruder's** presence, the door stops, an intruder alert sounds, and the door reverses direction. Occupants then exit where they entered from. 4. **Authorized Person** re-enters door compartment, then exits.

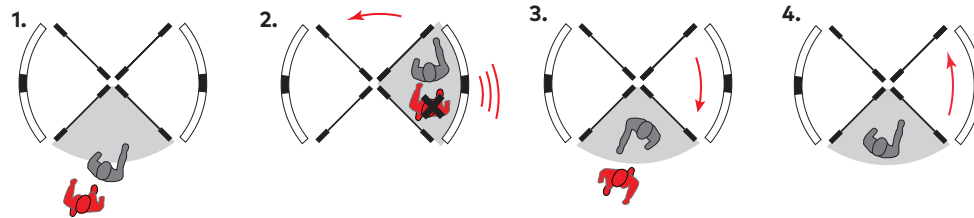
### S3 Security Door with Anti-Piggybacking

A sophisticated automatic security revolving door with automatic anti-piggybacking, a feature that restricts access to a single confirmed person. The S3 door also features anti-tailgating. The 3000-S3 door utilizes cutting edge, highly accurate technology to provide the most secure entrance possible.



1. **Authorized Person** swipes card and enters door compartment. 2. **Intruder** enters next available compartment. 3. Sensors detect **Intruder's** presence, the door stops, an intruder alert sounds, and the door reverses direction. Occupants then exit where they entered from. 4. **Authorized Person** re-enters door compartment, then exits.

### S3 automatic door: cutting edge, most secure solution



1. **Authorized person** swipes card and enters door compartment. **Intruder** follows into same compartment. 2. Sensors detect two occupants in the same compartment. The door stops and an intruder alert sounds. 3. Door reverses direction to clear both occupants from the compartment. 4. **Authorized Person** re-enters door compartment.

### Optional Welded Floor Grilles

Heavy-duty floor grilles fabricated from concentrically rolled bars of stainless steel can be integrated into the revolving door design.

**NOTE:** Floor grilles are not included in air infiltration testing.

### Customizable Options

- Push bars
- Ceiling light
- Finishes
- Dimensions & sizes
- Canopy
- Glass

### Service and Maintenance

Servicing and maintaining your 3000-S Series door is vital to ensuring your entrance is fully functional and secure at all times. We offer a variety of service plans to meet your needs. To find out more, visit

[go.dormakaba.com/ServiceAMER](http://go.dormakaba.com/ServiceAMER)

### Comparing Security Levels

Security level / Operation	S1 Manual	S2 Auto	S3 Auto
Access control flow	1-way and 2-way		
Interface to security system	✓	✓	✓
Anti-tailgating		✓	✓
Anti-piggybacking			✓
Fail safe	✓	✓	✓
Fail secure with battery backup	✓	✓	✓
Optional battery backup	✓	✓	✓
Optional annunciator	✓	✓	✓
Optional lighting	LED or Florescent 8" Circline, or LED Spotlights		
Power requirements	120VAC, 20A breaker		

**NOTE**  
Contact us or visit our web site for information about other Crane products.

DORMA USA, Inc.  
Dorma Drive,  
Drawer AC  
Reamstown, PA 17567  
844-SPECNOW  
(844-773-2669)  
[www.dormakaba.com](http://www.dormakaba.com)