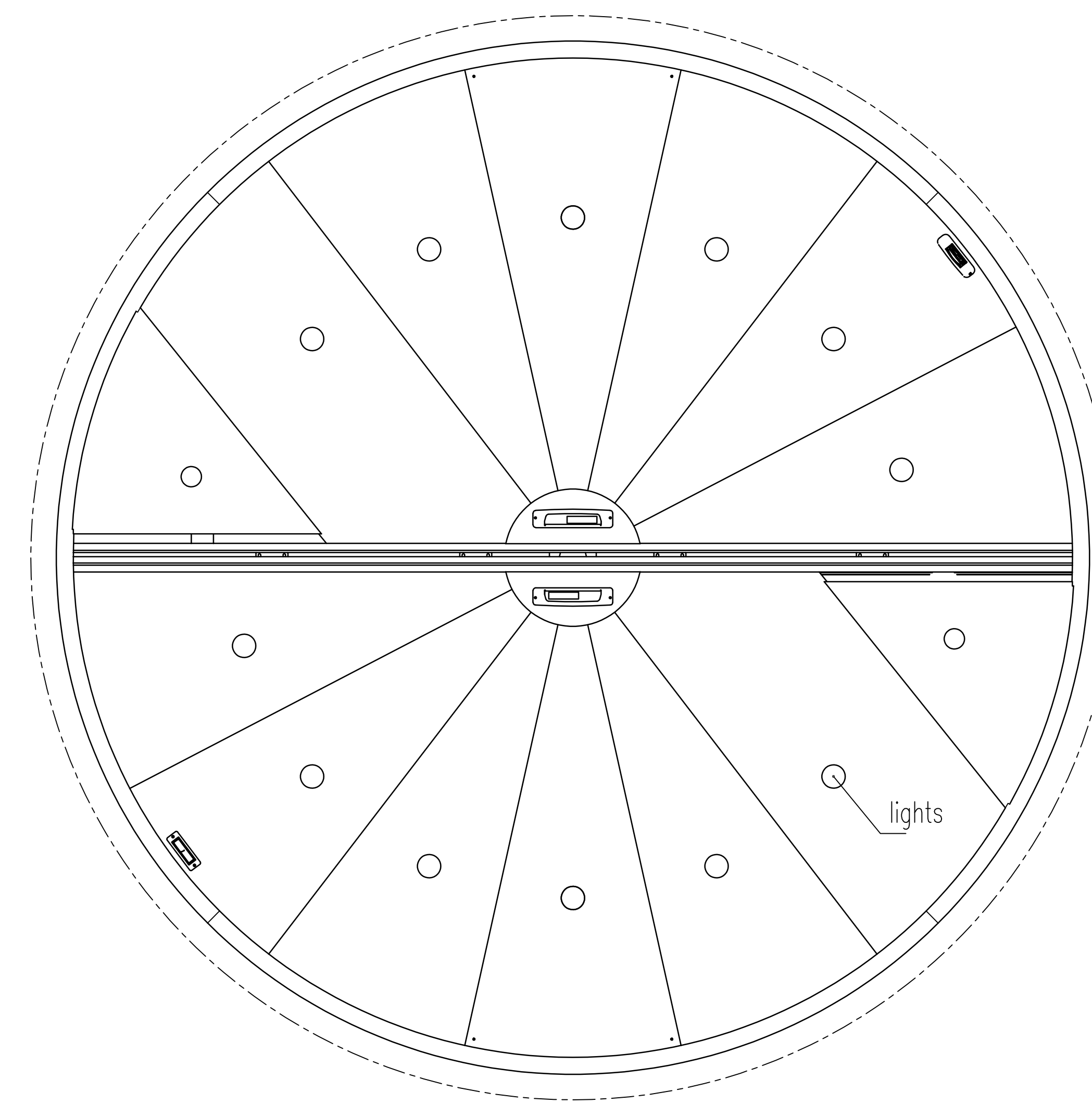
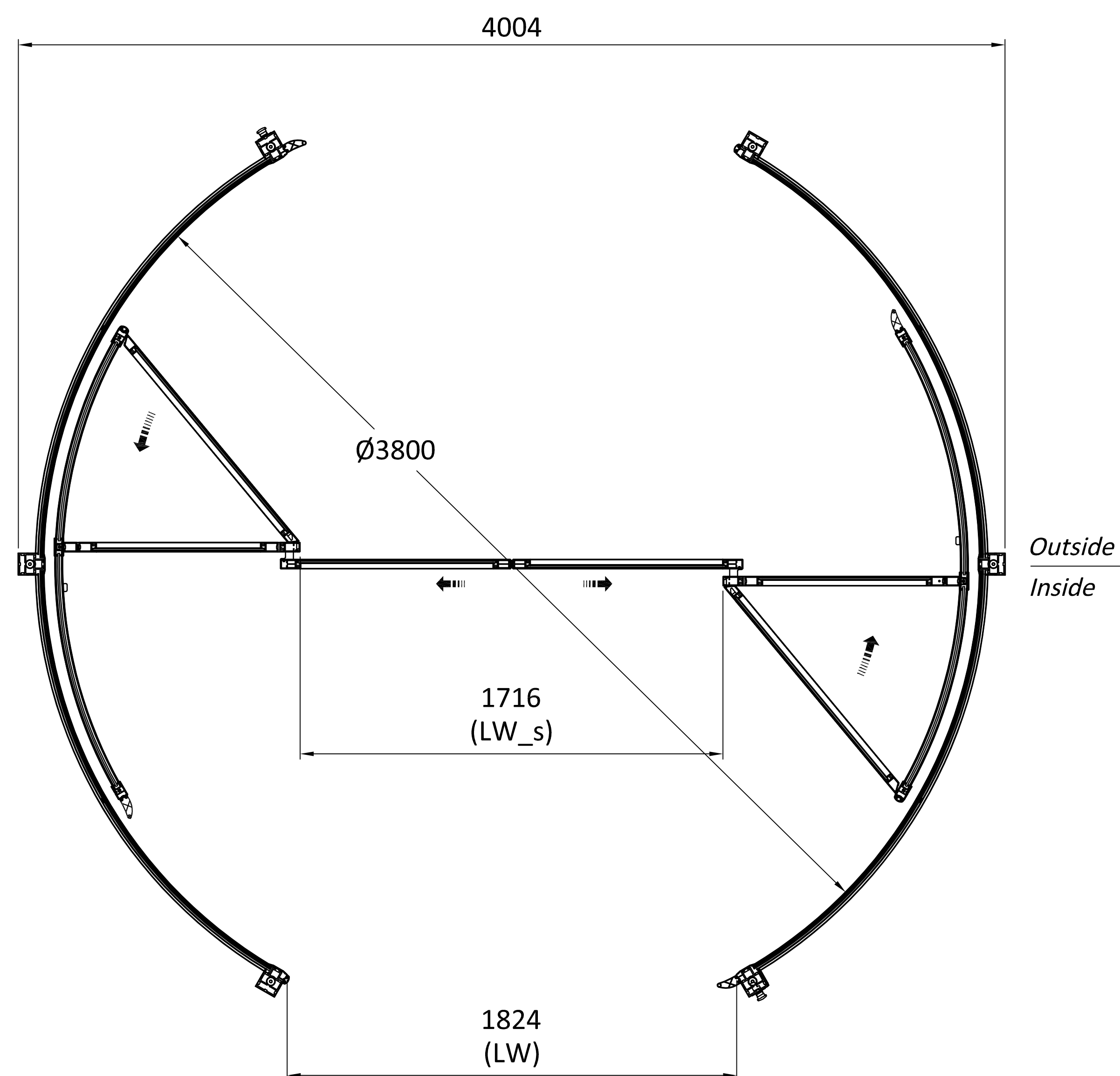


D - Internal Diameter  
 LH - Passage Height  
 CH - Canopy Height  
 LW - Passage Width-Revolving door  
 LW\_S - Passage Width-Sliding door  
 B1 - External Diameter Drumwall  
 B2 - External Diameter Canopy



Top view of ceiling

Contract Number

APPROVAL SIGNATURE

Safety Kits

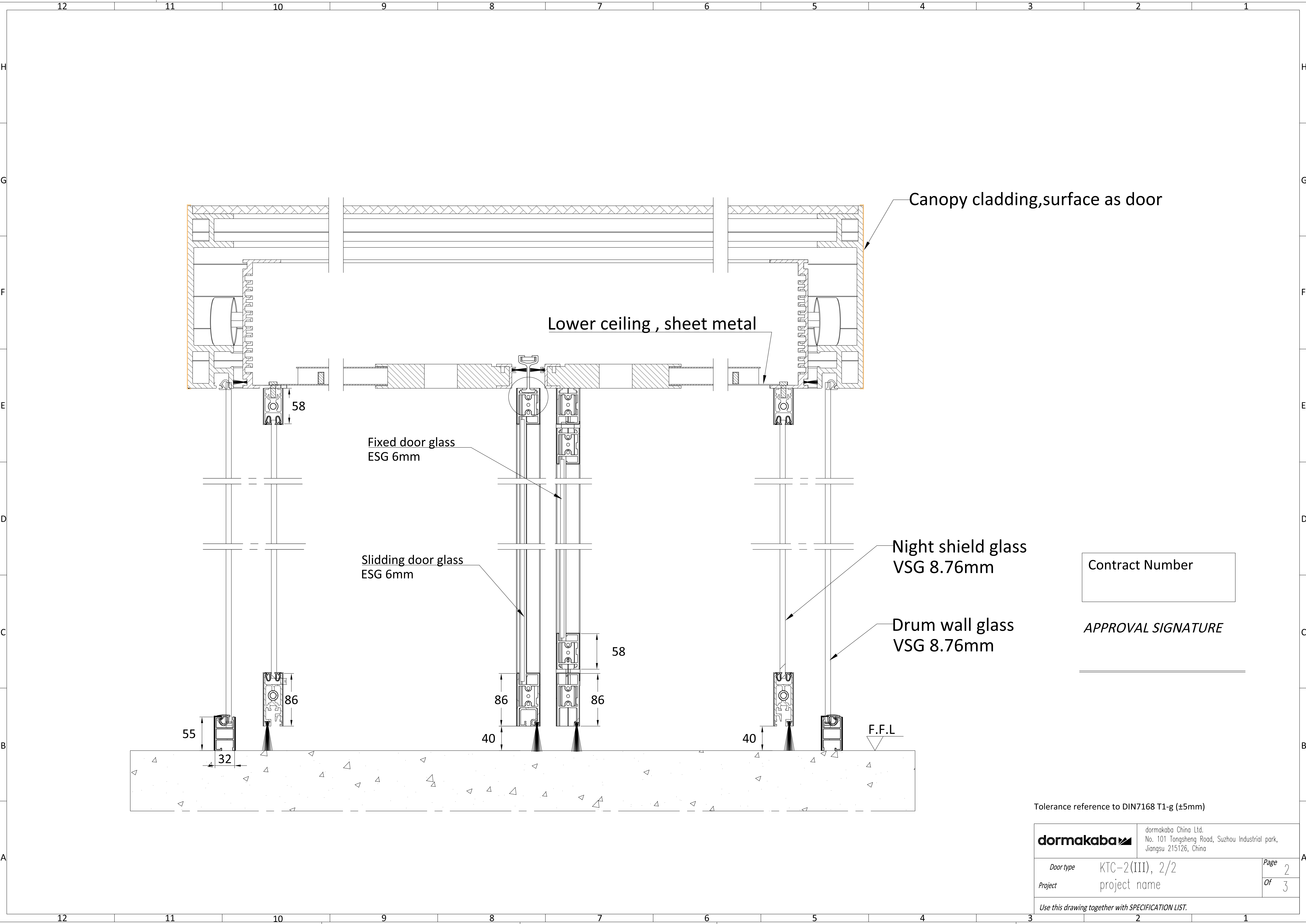
Standard Safety Kits, Recessed mounted

PLUS Safety Kits, Recessed Comply with DIN 18650 / EN 16005

\* The sensors qty and layout maybe different from the view for different diameter, please ask for details if need to be shown in your Architect Drawing.

Tolerance reference to DIN7168 T1-g (±5mm)

<b>dormakaba</b>		dormakaba China Ltd. No. 101 Tongsheng Road, Suzhou Industrial park, Jiangsu 215126, China
Door type	KTC-2(III), 2/2	Page 1
Project	project name	Of 3
Use this drawing together with SPECIFICATION LIST.		



Contract Number

APPROVAL SIGNATURE

\_\_\_\_\_

Tolerance reference to DIN7168 T1-g (±5mm)

	dormakaba China Ltd. No. 101 Tongsheng Road, Suzhou Industrial park, Jiangsu 215126, China	
	Door type KTC-2(III), 2/2	Page 2
Project project name	Of 3	
Use this drawing together with SPECIFICATION LIST.		

12 11 10 9 8 7 6 5 4 3 2 1

PGS on column  
Handicapped button  
On Column, interior  
Emergency button  
On Column, interior

E - Side panel width  
B1 - External Diameter Drumwall  
B2 - External Diameter Canopy

Contract Number

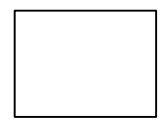
APPROVAL SIGNATURE

\_\_\_\_\_

INTERIOR  
EXTERIOR

Handicapped button  
On Column, exterior

Emergency button  
On Column, exterior



<b>dormakaba</b>		Approval Drawing For Customer and Architects	
Doortype	KTC-2(III), 2/2	Page	3
Project	project name	Of	3
Use this drawing together with SPECIFICATION LIST.			

12 11 10 9 8 7 6 5 4 3 2 1

