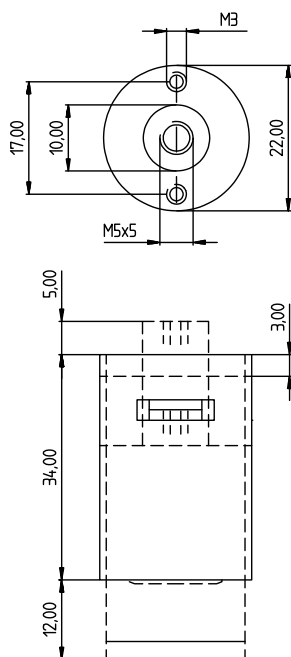


Push Cylinder DRZ.1064



Application:

Push cylinder for sliding metal doors and central locks
Closing without key, opening with key

Specification:

Housing supplied in solid natural brass with nickel plating
Reversible key made from nickel silver
M5 female threads for standard machine screws

Included with the cylinder:

2 reversible keys (See "Special Functions and Keys" for key options)
Plastic key clip in dark red for Kaba penta, in dark blue for all other systems
Security Card for ownership registration and ordering duplicate keys
Installation and Maintenance Instructions

Premier Systems:	6 Kaba penta	7 Kaba quattro pluS	12 Kaba gemini pluS
Patent expired systems	4 Kaba quattro S	2 Kaba gemini S	
Old systems	3 Kaba quattro ¹⁾	1 Kaba gemini ¹⁾	
Dealer systems	5 Kaba experT ²⁾	19 Kaba maTriX ²⁾	
Old dealer system		9 Kaba gemini T ²⁾	

Length Standard - 34mm

Options (See „Special Functions and Keys“ for details)

BAZ	Construction key	BAZ3	Construction key 3		
-----	------------------	------	--------------------	--	--

Standard Surface Finishes

NI - Nickel plated	MS - Brass natural	
--------------------	--------------------	--

Optional Surface Finishes

BH - brown light	MP - Brass polished	CR - Chrome standard
BM - brown medium	MSA - Brass antique	CRM - Chrom dull
BD - brown dark		CRP- Chrome polished
NIC - chemically nickel plated		
GO - gold plated		

Order Code System

System Code.Cylinder.Type.Surface finish.Option

Example:

6.DRZ.1064.NI = penta.push cylinder.1064.nickel plated

Please note that certain options, finishes and dimensions may be subject to extended factory lead times. Please contact our office via email on sales.uk@kaba.com or telephone (0) 870 000 5625.

¹⁾ Kaba gemini and Kaba quattro are only offered for existing master key systems.

²⁾ Kaba experT, Kaba maTriX and Kaba gemini T are only sold to authorized dealers.