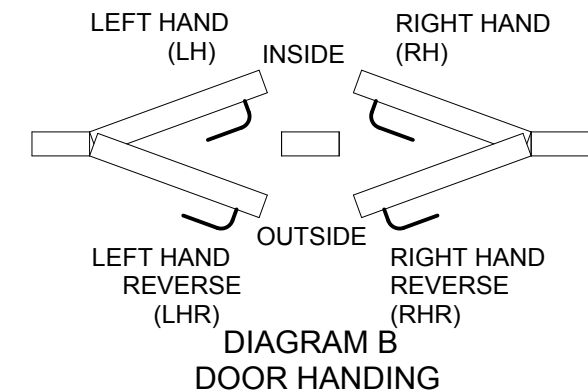
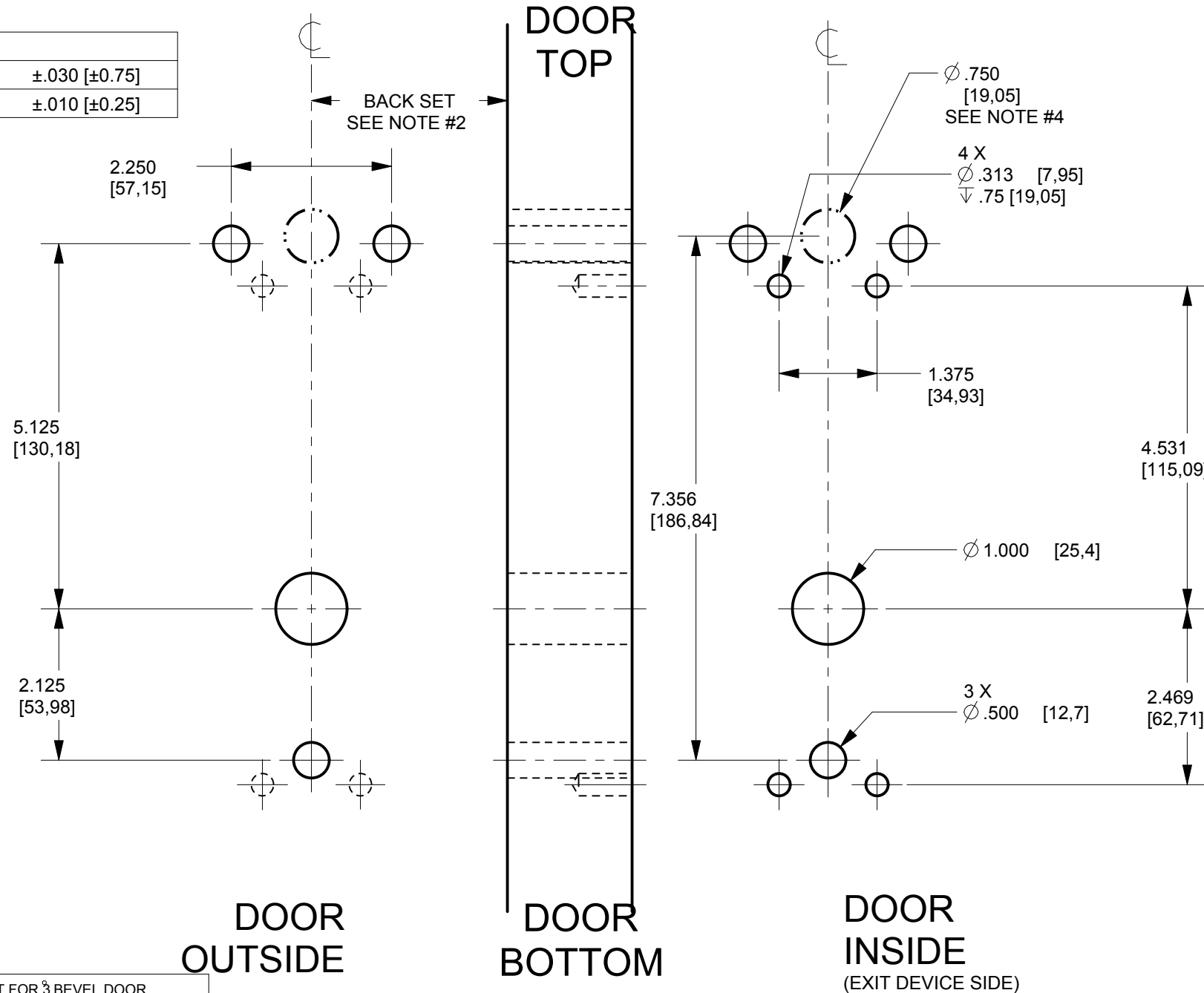


NOTES:

- FOR EXIT DEVICE AND MORTISE LOCK CUT-OUT REFER TO EXIT DEVICE MANUFACTURER INSTALLATION INSTRUCTIONS.
- BACKSET SHOWN FOR REFERENCE ONLY, ADJUST BACKSET TO EXIT DEVICE MANUFACTURER INSTALLATION INSTRUCTIONS. BACKSET TO BE ADJUSTED TO LOW AND HIGH BEVEL DOOR EDGE AS PER DIAGRAM A TABLE.
- DIMENSIONS ARE SYMMETRICAL ABOUT  $\text{CL}$  UNLESS OTHERWISE NOTED.
- THIS HOLE ONLY FOR LOCK WITH MESSENGER OR BLUETOOTH.
- FOR COMPLETE HOLE PATTERN REFER TO DRAWING DT-515149 OR IP-515149.
- ALL DIMS ARE IN INCHES/[mm]

REVISIONS					
REV	ECN	DESCRIPTION	FAIT PAR MADE BY	VERIF PAR CHK'D BY	DATE
1	13259	ORIGINAL RELEASED FOR PILOT	P.P.	A.T.	12AU 2009
2	15719	NOTES ADJUSTED, NEW DESCRIPTION	A.E.	C.D.	20JA 2016

SPECIFIC TOLERANCES	
DISTANCES	$\pm .030$ [ $\pm 0.75$ ]
HOLES $\varnothing$	$\pm .010$ [ $\pm 0.25$ ]



$\text{CL}$  LOCK LEVER

**VERSION 4**

**LHR LOCK**

DIAGRAM A - BACK SET AJUSTEMENT FOR  $\frac{3}{8}$  BEVEL DOOR

DOOR THICKNESS DIMENSION X	BACK SET AJUSTEMENT DIMENSION Y
1.25 (31,8mm)	.032 (0,81mm)
1.50 (38,1mm)	.039 (1,00mm)
1.75 (44,5mm)	.046 (1,17mm)
2.00 (50,8mm)	.052 (1,32mm)
2.25 (57,2mm)	.059 (1,50mm)
2.50 (63,5mm)	.065 (1,65mm)
2.75 (69,9mm)	.072 (1,83mm)

LOW BEVEL EDGE

HIGH BEVEL EDGE

2.750 STANDARD BACK-SET

REFERENCE

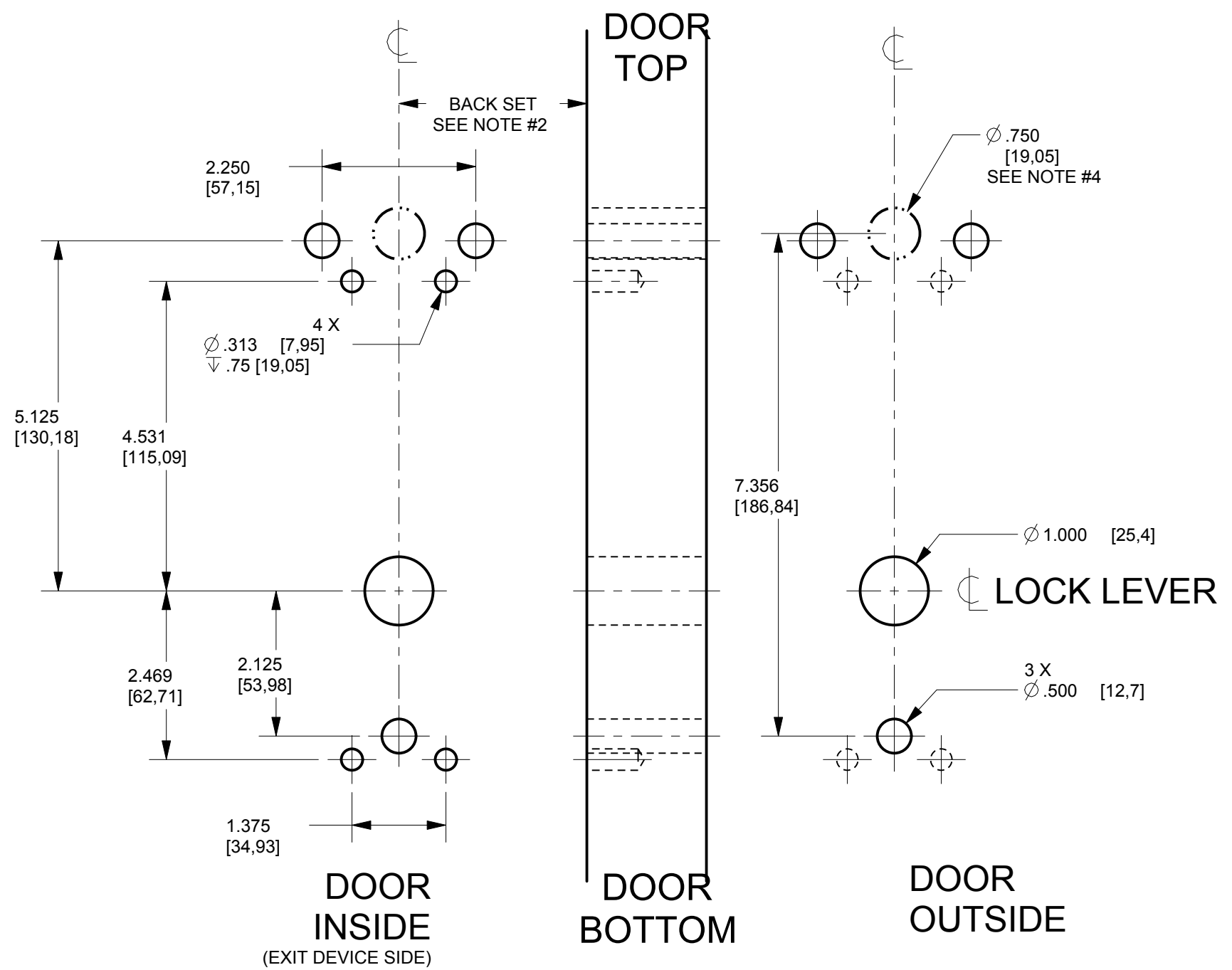
Y

X

- SYMBOLS:
- $\nabla$  DEEP
  - $\square$  COUNTERBORE
  - $\text{CL}$  CENTER LINE
  - $\varnothing$  DIAMETER
  - $\leftarrow$  NOT TO SCALE

SCALE 1:2

	DIMENSIONS CRITIQUES CRITICAL DIMENSIONS	SANS AUTRES SPECIFICATIONS, LES DIMENSIONS SONT POUCES [millimètres] ET S'APPLIQUENT APRÈS FINITION. UNLESS OTHERWISE SPECIFIED, DIMENSIONS ARE INCHES [millimeters] AND APPLY AFTER FINISH.	DESSIN PAR: DRAWN BY: P.PRIEUR	12AU09		7301, Decarie Boul Montreal, QC Canada H4P 2G7 www.kaba-ilco.com
	PROJECTION 31em ANGLE THIRD ANGLE PROJECTION	NE PAS MESURER SUR LE DESSIN DO NOT SCALE DRAWING	CONCU PAR: DESIGNED BY: A.TOLEDANO	12AU09		
TOLERANCES:			MATERIAU / MATERIAL:		630, 730, 750, 79E, E-PLEX 2000 AND POWER-PLEX 2000 LOCK SERIES DOOR PREPARATION DRAWING VON DUPRIN MORTISE 9875/9975 EO-F	
DIMENSIONING AND TOLERANCING AS PER AMERICAN SOCIETY OF MECH ENGINEERS ASME Y14.5-1994 CE DOCUMENT EST LA PROPRIETE STRICTE DE KABA. LES DONNEES QUI IL CONTIENT NE PEUVENT ETRE COPIEES OU DIVULGUEES A UNE TIERCE PARTIE SANS LE CONSENTEMENT ECRIT DE KABA. CE DOCUMENT DEVRA ETRE RETOURNE SUR DEMANDE A KABA. THIS DOCUMENT IS PROPERTY OF KABA. THE DATA CONTAINED IS PROPRIETARY AND SHALL NOT BE COPIED OR DISCLOSED TO A THIRD PARTY WITHOUT WRITTEN CONSENT OF KABA. THIS DOCUMENT WILL BE RETURNED TO KABA UPON DEMAND. UNE VERSION FRANCAISE DE CE DOCUMENT EST DISPONIBLE SUR DEMANDE.			NOT APPLICABLE		FORMAT	NO PIECE / PART NO:
THIS DRAWING HAS SPECIFIC TOLERANCES, SEE NOTES			FINITION / FINISH		NO DESSIN / DRAWING NO:	
CE DESSIN A DES TOLERANCES SPECIFIQUES, VOIR LES NOTES			TRAITEMENT THERMIQUE / HEAT TREATMENT		B	N/A
			NOT APPLICABLE		ECH SCALE	IP-513126
			NOT APPLICABLE		SEE VIEWS	PG SHT 1
					DE OF 2	



SCALE 1:2

# VERSION 4

## RHR LOCK

<small>CE DOCUMENT EST LA PROPRIETE STRICTE DE KABA. LES DONNEES QU'IL CONTIENT NE PEUVENT ETRE COPIEES OU DIVULGUEES A UNE TIERCE PARTIE SANS LE CONSENTEMENT ECRIT DE KABA. CE DOCUMENT DEVRA ETRE RETOURNE SUR DEMANDE A KABA.</small>		<b>KABA®</b>		<small>7301, Decarie Boul Montreal, QC Canada H4P 2G7 www.kaba-ilco.com</small>	
<small>THIS DOCUMENT IS PROPERTY OF KABA. THE DATA CONTAINED IS PROPRIETARY AND SHALL NOT BE COPIED OR DISCLOSED TO A THIRD PARTY WITHOUT WRITTEN CONSENT OF KABA. THIS DOCUMENT WILL BE RETURNED TO KABA UPON DEMAND.</small>	<small>NO PIECE / PART NO:</small> N/A	<small>NO DESSIN / DRAWING NO:</small> IP-513126			
<small>UNE VERSION FRANCAISE DE CE DOCUMENT EST DISPONIBLE SUR DEMANDE.</small>	<b>B</b>	<small>FOR COMPLETE TITLE REFER TO PAGE 1</small>	<small>PG SHT</small> 2	<small>DE OF</small> 2	<small>2</small>