

High security key switch

KX31100800-NI & K31100800-NI



Description:

High-security rotary cam key switch featuring a sophisticated multi-row pin tumbler cylinder mechanism. Suitable for heavy-duty industrial applications where secure control of switching is required.

Specification:

- High Security 2 pole, 2 position changeover key switch with electrically isolated contacts (no links between terminals).
- 30 degree operating between 12 o'clock and 1 o'clock, with
- spring return from 1 o'clock to 12 o'clock.
- Switch modules offer screw terminals as standard
- High security cylinder with Bayonet mounted switch allowing easier / separate wiring.

Cylinder Features:

The dormakaba Kaba 20 cylinder range, with its patent protected reversible key, is ideal for heavy usage, industrial and commercial applications where security and reliability are paramount.

Swiss precision engineered with In-house design solutions available for bespoke application

- Strong reversible nickel silver keys
- Kaba 20 key blanks are protected by European patent protection until 2033 (K37 Systems)
- 4 radially arranged pin rows on up to 22 tumbler pin pairs giving a high degree of protection against surreptitious manipulation
- High permutation capacity suitable for large master key systems - more than 726 billion possible keyings
- High security key registration
- Coloured key clips available for easy identification

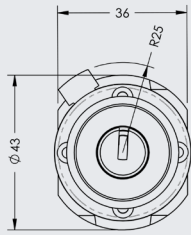
dormakaba key switches are ideal in the following areas:

- Control and Load Switches
- Changeover, Off/On and Spring Return - Control Switches
- Automation and control of machinery
- Industrial control panels
- Door barriers and gate control
- Shutter controls
- Multiple key entry options for OEM applications
- Lift and escalator controls
- Alarm set switch
- Desk and control panel switches for the Rail Industry

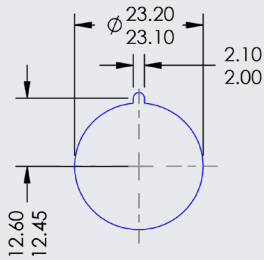
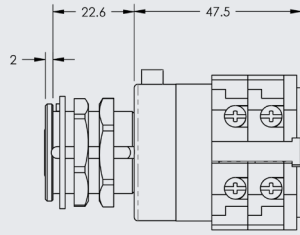
Item Codes:

KX31100800-NI	Kaba 20 (K37)	Active System
K31100800-NI	Kaba 20 (P1)	O1 Legacy System

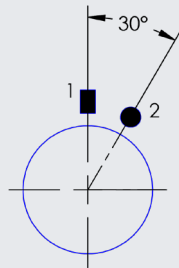
Key switch end view



Key switch side view



Panel Cutout



KID630 - One Key Entry at position 1.
30° Spring return between position 2 (Key retained)

Switch Specifications

Contact rating, resistive load	24V DC = 20A 440V AC = 20A
Minimum Volts/amps	20V/5 mA
Contact Material	Silver (Gold optional)
Mechanical Service Life	< 1,000,000 operations
Operating temperature range	Min air temperature <ul style="list-style-type: none"> -25 °C = No excessive shock or vibration -5 °C = Normal use. Max air temperature. For 100% thermal rating <ul style="list-style-type: none"> +55 °C (average over 24 hrs with peaks up to 60 °C)
Depth behind panel	70.1mm
Terminal type	Screw

Datasheet: PDS-013-02

Any questions? We would be happy to advise you.

Contact us on: **01884 256464**