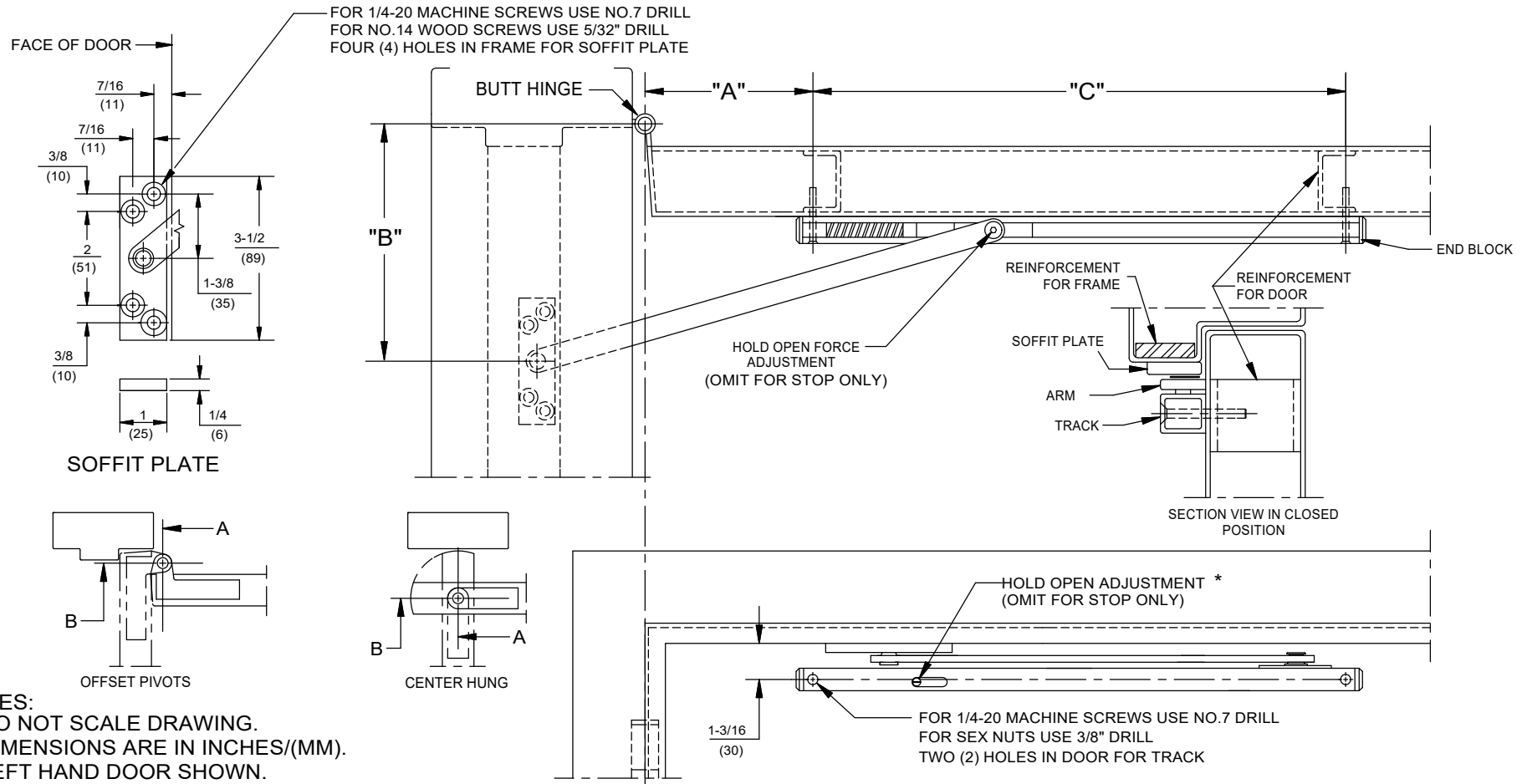


INSTALLATION INSTRUCTIONS:

1. Determine unit type: (S) DEAD STOP ONLY or (H) HOLD OPEN.
2. Determine degree of hold-open or dead stop required and select the "A", "B" and "C" dimensions from the opposite side of page.
3. Prepare door and frame according to the template found on this page.
4. Place end blocks into each end of track. Install track and arm assembly to door, making sure spring faces hinges.
5. Attach soffit plate on frame.

*** ADDITIONAL INSTRUCTIONS (HOLD-OPEN UNITS):**

6. Adjust hold-open to on or off position. One direction on-opposite direction off.
7. Adjust the holding force by inserting a 5/64" hex key into the slide shoe bolt. Turn right to increase and left to decrease holding force.
8. Open door until slide shoe engages with hold-open.
9. To release the door, pull until the slide shoe disengages.



- NOTES:**
1. DO NOT SCALE DRAWING.
 2. DIMENSIONS ARE IN INCHES/(MM).
 3. LEFT HAND DOOR SHOWN.

STOP AND HOLDER SERIES: 901H - 903H, 901S - 903S
HEAVY DUTY SURFACE APPLIED STOP/HOLD
PUSH SIDE MOUNT
CENTER HUNG, 3/4" OFFSET AND 4-1/2" X 4-1/2" HINGES

**900S, 900H SERIES
HEAVY DUTY SURFACE OVERHEAD STOP AND HOLDER**



UNIT	DEGREE OF OPENING	4-1/2" HINGES OR 3/4" PIVOTS			CENTER HUNG			DIM "C"	DEGREE OF OPENING	UNIT
		DOOR RANGE	DIM "A"	DIM "B"	DOOR RANGE	DIM "A"	DIM "B"			
901 S	85° DEAD STOP ONLY	24 to 34	3-15/16	5-1/2	26 to 36	4-7/16	7	17-1/4	85° STOP ONLY	901 S
	90° DEAD STOP ONLY		3-1/2	5-1/2		3-15/16	7		90° STOP ONLY	
	95° DEAD STOP ONLY		3-1/8	5-1/2		3-7/16	7		95° STOP ONLY	
	100° DEAD STOP ONLY		2-7/8	5-1/2		3-9/16	6		100° STOP ONLY	
	105° DEAD STOP ONLY		2-3/8	5-1/2		3-3/16	6		105° STOP ONLY	
	110° DEAD STOP ONLY		2-1/8	5-1/2		2-13/16	6		110° STOP ONLY	
901 H	85° HOLD OPEN	24 to 34	3-3/8	5-1/2	26 to 36	3-7/8	7	17-1/4	85° STOP & HOLD	901 H
	90° HOLD OPEN		2-15/16	5-1/2		3-15/16	7		90° STOP & HOLD	
	95° HOLD OPEN		2-9/16	5-1/2		2-13/16	7		95° STOP & HOLD	
	100° HOLD OPEN		2-3/16	5-1/2		3	6		100° STOP & HOLD	
	105° HOLD OPEN		1-13/16	5-1/2		2-7/16	6		105° STOP & HOLD	
	110° HOLD OPEN		1-9/16	5-1/2		2-1/4	6		110° STOP & HOLD	
902 S	85° DEAD STOP ONLY	34-1/8 to 44	10-1/4	9-3/4	36-1/8 to 46	11-1/8	10	20-3/4	85° STOP ONLY	902 S
	90° DEAD STOP ONLY		9-1/2	9-3/4		10-5/16	10		90° STOP ONLY	
	95° DEAD STOP ONLY		8-13/16	9-3/4		9-9/16	10		95° STOP ONLY	
	100° DEAD STOP ONLY		8-5/8	8-1/4		9-7/16	9		100° STOP ONLY	
	105° DEAD STOP ONLY		8-1/8	8-1/4		8-13/16	9		105° STOP ONLY	
	110° DEAD STOP ONLY		7-5/8	8-1/4		8-5/8	9		110° STOP ONLY	
902 H	85° HOLD OPEN	34-1/8 to 44	9-5/8	9-3/4	36-1/8 to 46	10-7/16	10	20-3/4	85° STOP & HOLD	902 H
	90° HOLD OPEN		8-7/8	9-3/4		9-5/8	10		90° STOP & HOLD	
	95° HOLD OPEN		8-3/16	9-3/4		8-7/8	10		95° STOP & HOLD	
	100° HOLD OPEN		8-3/16	8-1/4		8-3/4	9		100° STOP & HOLD	
	105° HOLD OPEN		7-11/16	8-1/4		8-1/8	9		105° STOP & HOLD	
	110° HOLD OPEN		7-1/4	8-1/4		7-5/8	9		110° STOP & HOLD	
903 S	85° DEAD STOP ONLY	44-1/8 to 54	14-3/8	13-1/2	46-1/8 to 54	19-1/4	13-1/2	26	85° STOP ONLY	903 S
	90° DEAD STOP ONLY		13-5/16	13-1/2		18-1/8	13-1/2		90° STOP ONLY	
	95° DEAD STOP ONLY		12-5/16	13-1/2		17-1/8	13-1/2		95° STOP ONLY	
	100° DEAD STOP ONLY		12-13/16	11		17-3/4	12		100° STOP ONLY	
	105° DEAD STOP ONLY		12-1/8	11		17	12		105° STOP ONLY	
	110° DEAD STOP ONLY		11-9/16	11		16-1/4	12		110° STOP ONLY	
903 H	85° HOLD OPEN	44-1/8 to 54	14	13-1/2	46-1/8 to 54	14-1/2	13-1/2	26	85° STOP & HOLD	903 H
	90° HOLD OPEN		12-15/16	13-1/2		13-3/8	13-1/2		90° STOP & HOLD	
	95° HOLD OPEN		11-15/16	13-1/2		12-5/16	13-1/2		95° STOP & HOLD	
	100° HOLD OPEN		12-3/8	11		13	12		100° STOP & HOLD	
	105° HOLD OPEN		11-5/8	11		12-1/4	12		105° STOP & HOLD	
	110° HOLD OPEN		11	11		11-1/2	12		110° STOP & HOLD	

- a. All 4-1/2" WIDE HINGE and 3/4" OFFSET PIVOT dimensions are for 1-3/4" thick doors, CENTER HUNG are for 1-3/4" to 2-1/4" thick doors. For additional door thicknesses consult DORMA's Technical Services department.
- b. DEAD STOP ONLY is the maximum degree to which the door will open when the shock spring is fully compressed.
- c. HOLD OPEN is the degree the door is held open. The shock absorber spring compresses while the door moves to the dead stop position which is several degrees greater.
- d. All values are in inches.