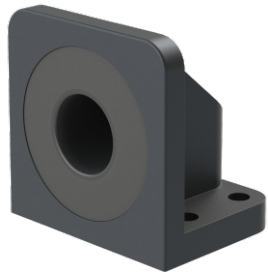
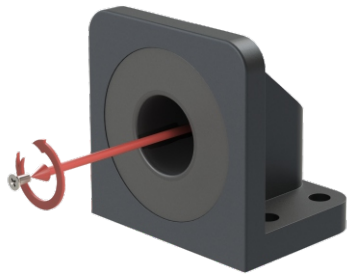


STRIKE

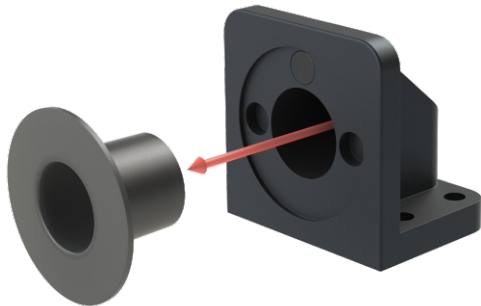


Configuration Guide

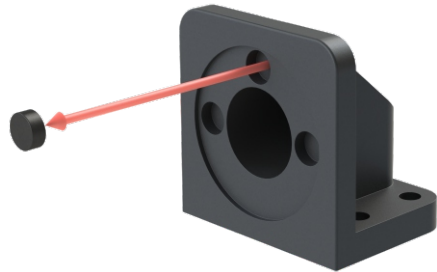
DISASSEMBLY



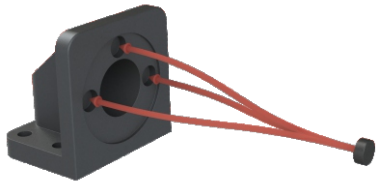
Remove the screw securing the strike ring with a #2 Phillips screwdriver



Slide the strike ring off of the strike to reveal the magnet

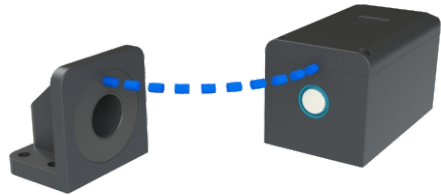


Carefully remove the exposed magnet by tipping the strike over, or using the tip of the screwdriver



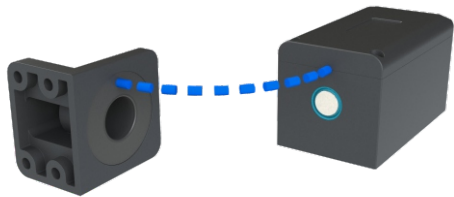
Insert the magnet into the appropriate hole based on the following configuration options a, b, c, then fit the strike ring back into position and screw in to secure

a) (default)



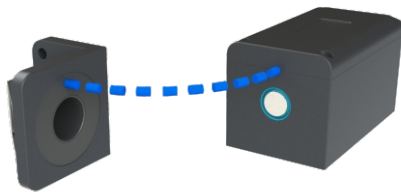
When the strike is oriented in the same plane as the lock, the magnet should be in the top slot

b)



When the strike is oriented 90 degrees clockwise to the lock, the magnet should be in the left slot

c)



When the strike is oriented 90 degrees counter-clockwise to the lock, the magnet should be in the right slot