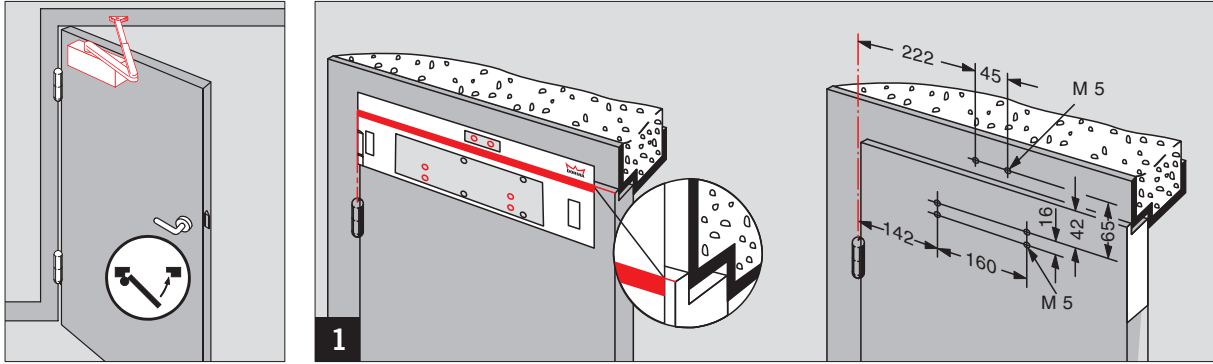
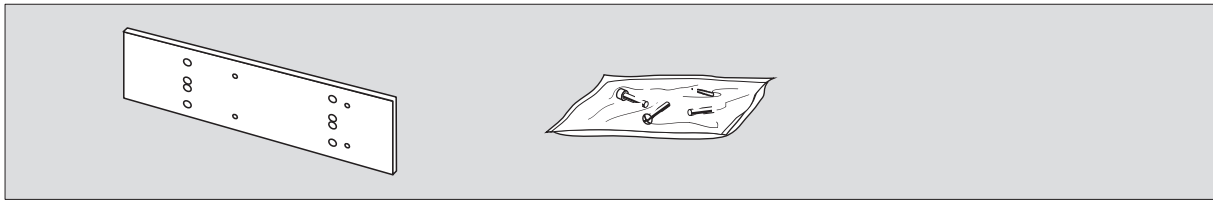
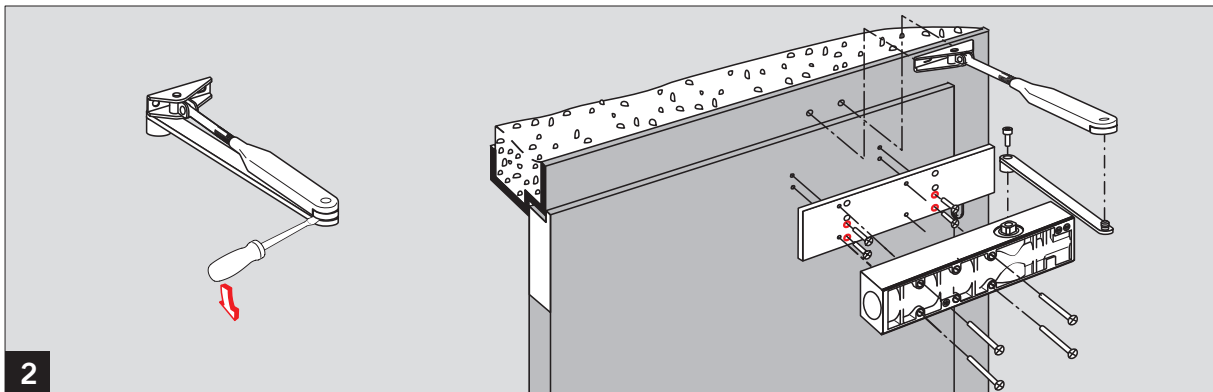
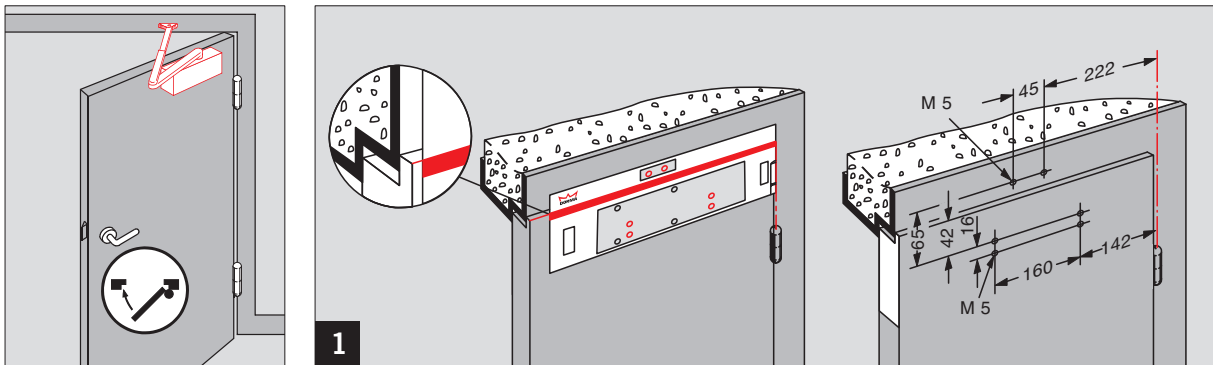
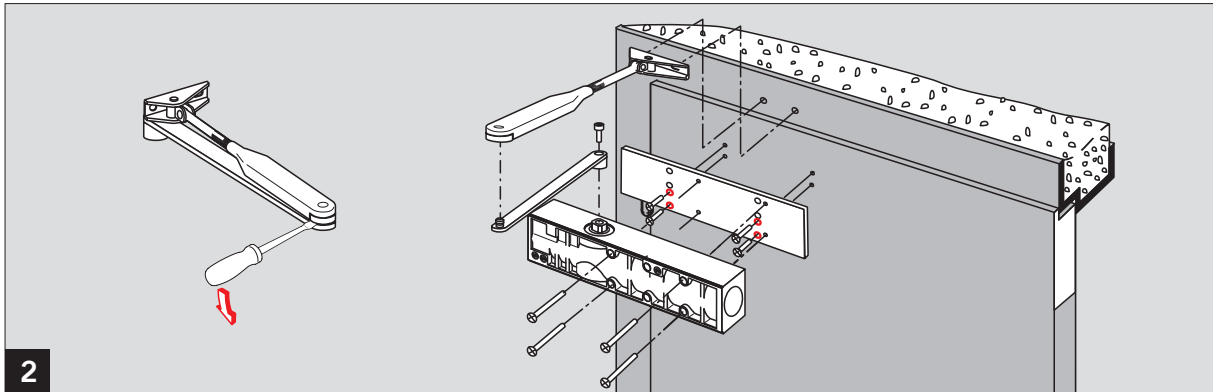
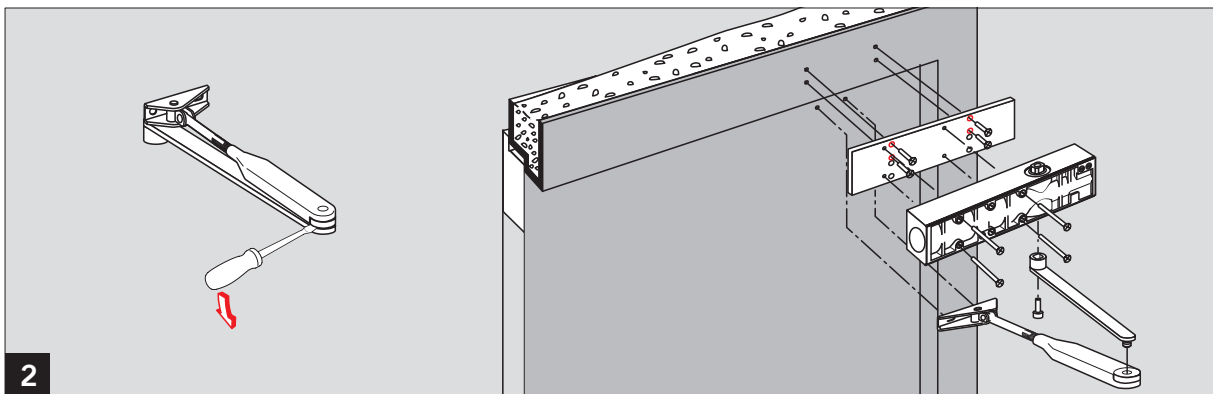
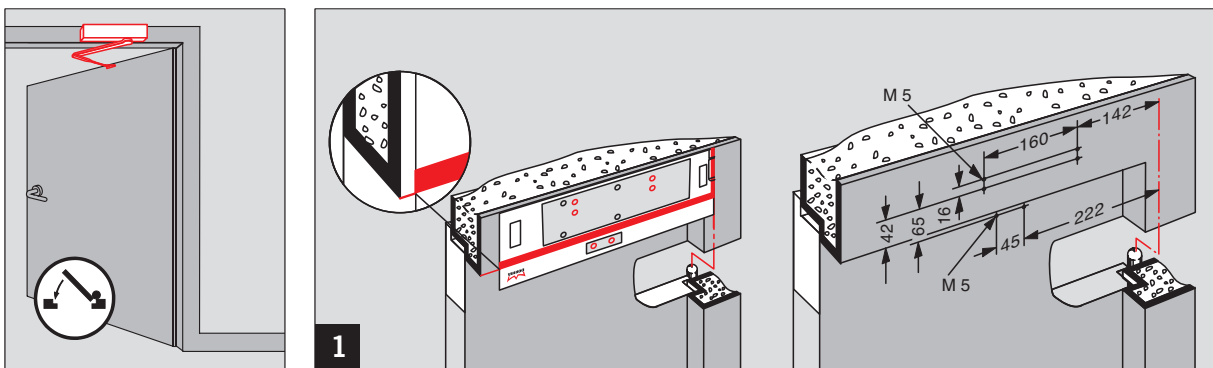
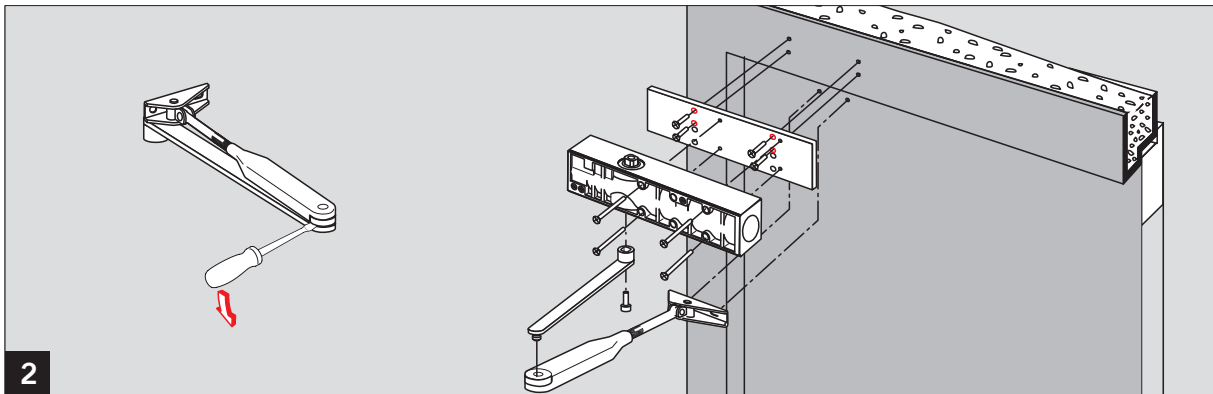
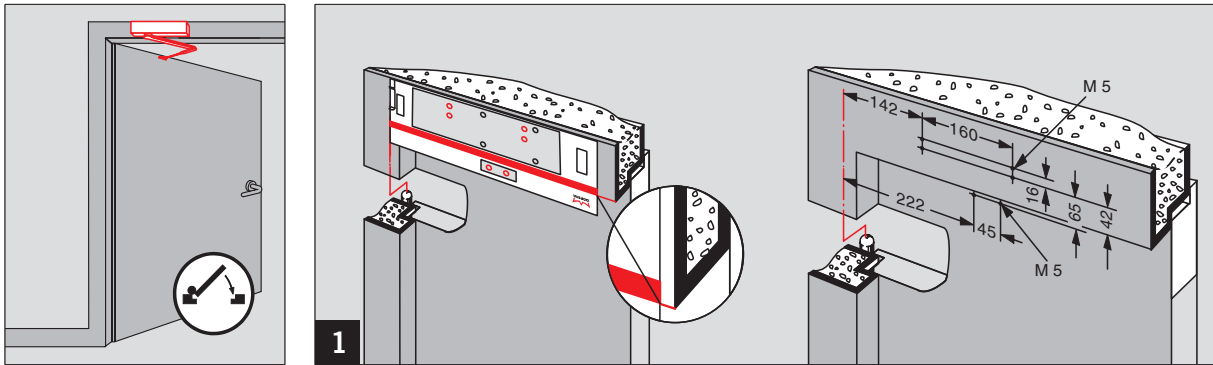
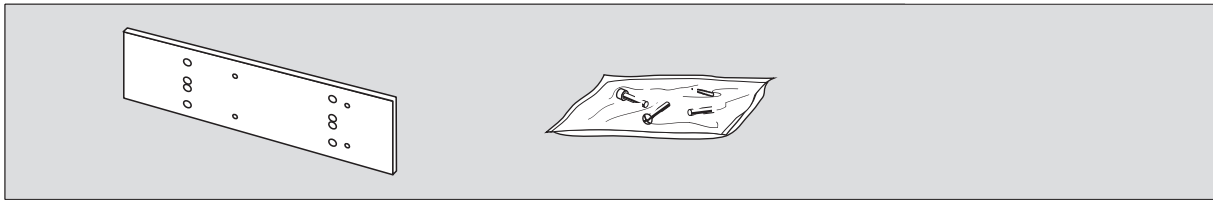


WN 056379 45632  
11/08



CE	DORMA GmbH + Co. KG Postfach 4009 58 247 Ennepetal	0432 - BPR-0007	EN 1154:1996+A1:2002	4	8	3	1	1	4
				6	6	1	1	1	4
Dangerous substances: None									





Änderungen vorbehalten  
Subject to change without notice