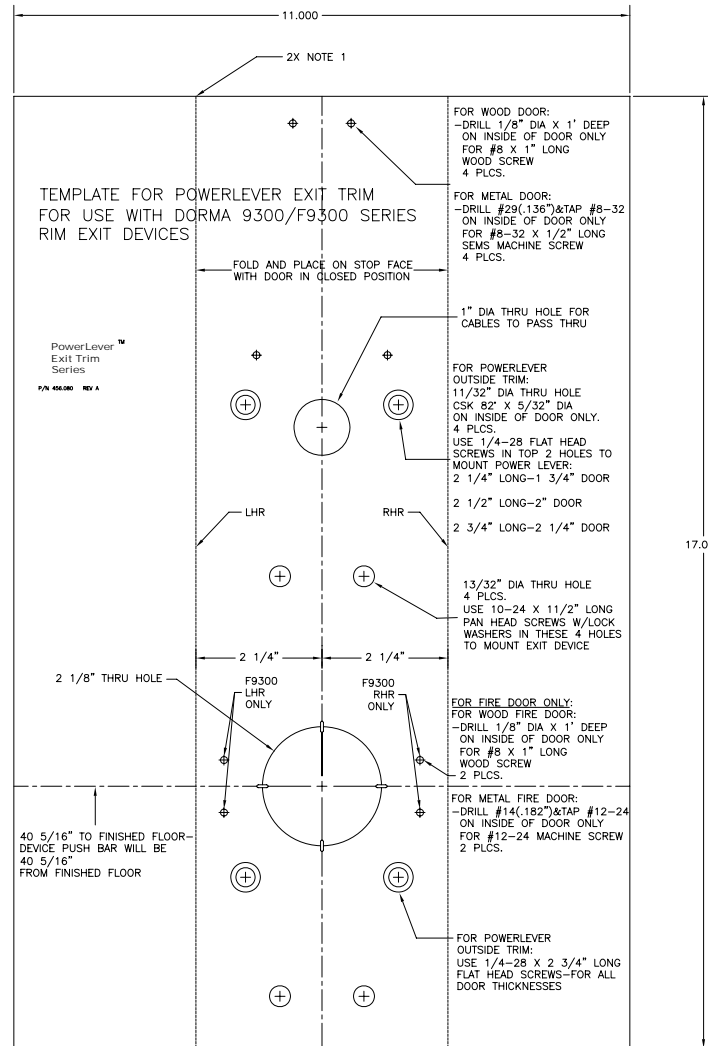


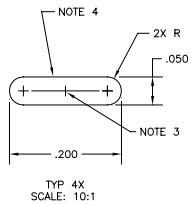
LIMITED RIGHTS IN DATA
 THIS DOCUMENT CONTAINS PROPRIETARY AND TRADE
 SECRET DATA OF THE MIL-MIL-HAZARD GROUP.
 IT IS NOT TO BE USED, REPRODUCED OR RELEASED IN
 WHOLE OR IN PART FOR ANY PURPOSE OTHER THAN
 THAT AUTHORIZED BY THE MIL-MIL-HAZARD GROUP.
 AUTHORIZATION MUST BE IN WRITING.

REV.	ECD #	REV. BY	CHKD BY	DATE
A	0784			23FEB01



- NOTES
- PERFORATE ALONG DASHED LINE TO AID FOLDING, APPROXIMATELY 10 PERFORATIONS PER INCH. PERFORATIONS TO BE WITHIN .005 OF PRINTED DASHED LINE.
 - BLACK INK ON WHITE PAPER
 - TO BE CENTERED ON 2 1/8" DIA AT THE 4 POINTS ON CIRCUMFERENCE AS SHOWN
 - PERIMETER TO BE PERFORATED SO IT CAN BE PUNCHED OUT
 - TOLERANCES TO BE ±.005 UNLESS OTHERWISE SPECIFIED
 - ALL TEXT AND DIMENSIONS SHOWN WITHIN THE 11 X 17 OUTLINE IS TO BE PRINTED

REFERENCE ONLY, NOT TO SCALE
DO NOT USE AS A DRILLING TEMPLATE
CALL 800-849-8324



REF. ASME Y14.5M-1994

MIL-MIL-HAZARD GROUP		805-D NEWTON CIRCLE	
LEXINGTON, KY 40511-1240		LEXINGTON, KY 40511-1240	
PHONE 606-355-6744		PHONE 606-355-6744	
TITLE	TEMPLATE, PL EXIT TRIM, DORMA 9300	DR.	INCH
MATERIAL	70 LB WHITE PAPER	DR.	INCH
SCALE	1:1	APP.	INCH
SHEET	1 OF 1	REV.	A
SIZE	11 X 17	DATE	456.080