



THE FLATTEST ELECTRONIC FITTING

—
MATRIX AIR. Our new electronic access
control system.



CONTENTS



Clean lines
4–5



Reduced inventory
14 – 15



Flattest electronic fitting
6–7



Cylinder & knob design
14 – 15



Consistent design
8–9



MATRIX AIR app
16 – 17



Telescopic system
10 – 11



MATRIX software system
18 – 19



Direct installation
12 – 13



Product overview
20 – 23

MATRIX AIR SETS NEW BENCHMARKS



Our electronic access control system combines outstanding design, few components and simple, hassle-free installation. This makes planning and realization easier. And opens

up various perspectives to architects, installers and business partners.

- Multi-award-winning design for the flattest electronic fitting
- Reduced number of different components because of modular design
- Quick and easy installation thanks to telescopic cylinder design and wireless configuration

CLEAN DESIGN. NO COMPROMISES.

MATRIX AIR. Translates all components into a single design language.



MATRIX AIR FITTING

Since at least the launch of the smartphone, it's been clear that intelligent technology and slender design are not mutually exclusive. Our designers have taken inspiration from such developments and created shapes that stylishly combine aesthetic and functional requirements.

MATRIX AIR CYLINDER

The radius of the fitting is repeated on the cylinder and reader and ensures a uniform style. A further striking and consistent design element is the recess on the cylinder knob. Here it is in the form of a handy recessed grip that makes turning easier.



MATRIX AIR READER

Neat, compact look. The reader is also characterized by a curved shape with rounded edges. Here, too, the same radius is used as a consistent design element.

MATRIX SOFTWARE

Data platform for the combination of access control, time management, emergency exit control, video surveillance, elevator control and other areas of digital building management.





OUTSTANDING DESIGN – SLIM DIMENSIONS

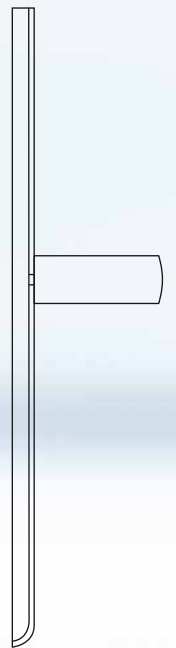
MATRIX AIR. The perfect symbiosis of technology and design.

The new electronic fitting is the first electronic fitting that is as flat as a normal door fitting. This outstanding slender design has been made possible thanks to groundbreaking engineering. The technology is integrated in the lever handle rather than in the fitting itself.

Our MATRIX AIR products are characterized by high functionality. And our product design reflects the constant desire to achieve absolute perfection.

The extremely elegant design has received several awards, including the iF Gold Award.

Since 1953, the iF Design Award has celebrated design excellence and is today one of the largest and most prestigious competitions in the field of design and architecture.



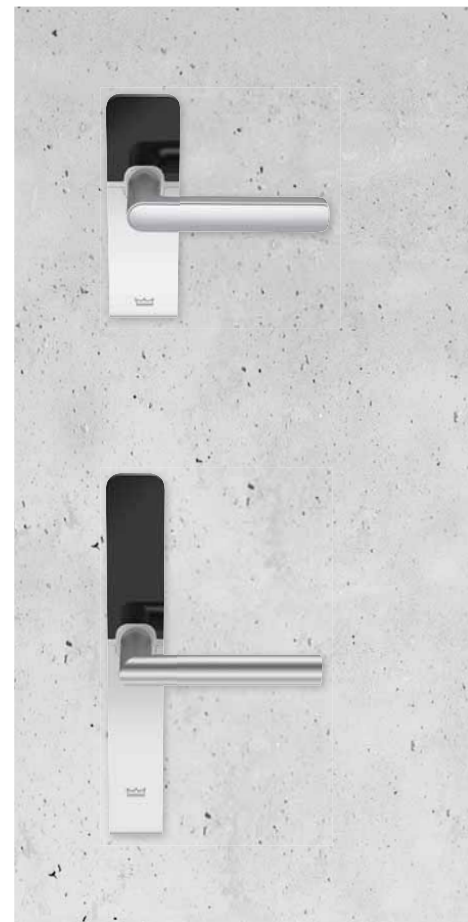
H
10.5 – 11.5 mm



* Narrow-stile/wide-stile (timber) fitting

FOR A CONSISTENT DESIGN. ELECTRONIC AND MECHANICAL LEVER HANDLES.

MATRIX AIR. Black and white. For narrow- and wide-stile doors



The MATRIX AIR and OGRO product families offer suitable products for a wide range of applications: Enclosure variants for narrow-stile and wide-stile (timber) doors in black and white, door fittings and roses, OGRO 8906 L-shape lever handle, OGRO 8115 Design L-shape lever handle and

OGRO 8116 Design U-shape lever handle. Matching pull handles, window handles and knobs are also available.

Easy replacement for different styles and functions.

With the MATRIX AIR fitting both the top cap (black or white) and the bottom cap (with or without profile cylinder cutout) can be replaced easily. With the cutout, the door can also be key-operated.



Same look. Throughout the building.

With the OGRO 8115 and 8116 product families, DORMA offers a mechanical lever handle range ensuring a consistent and integrated design approach throughout the building. The properties of the new mechanical door lever handle underline the high

standards of surface quality, finish and longevity that are typical for OGRO door lever handles.

- EPD certified
- For use in busy situations
- Minimized joint shadow line
- High-quality surface

Color coded:
The traffic light system quickly shows the cardholder's authorization status.



The electronic fitting with LED light ring.

Form follows function. The recess between the fitting and lever handle follows this principle. It is not just a design element; it also acts as the carrier of an optical signal. After activation by an access card, the LED light ring indicates the authorization

status. Green means access is granted – the door can then be opened with the handle. Red means access is denied. In this case, the door cannot be opened.





THE ELECTRONIC CYLINDER THAT ADAPTS FLEXIBLY TO THE DOOR

—

MATRIX AIR telescopic system. Direct installation without detailed measurements.

INSTANT INSTALLATION. FOR ALMOST ANY DOOR THICKNESS.

MATRIX AIR telescopic system. Installation has never been easier or more flexible.



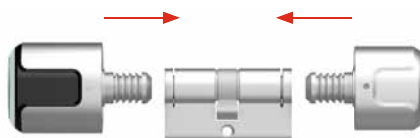
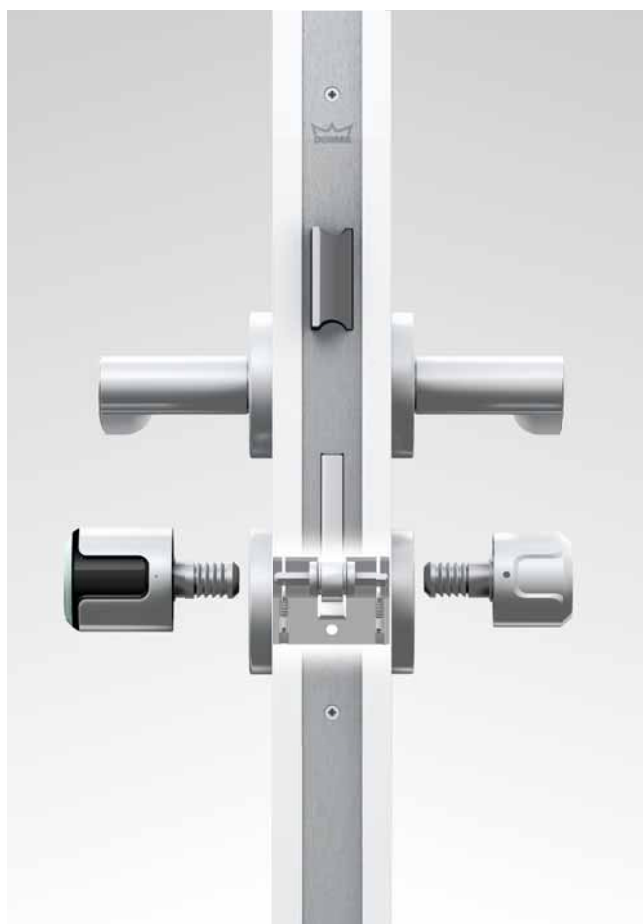
The internal technology is just as innovative as the slender design – a telescopic cylinder that adapts flexibly to a wide range of door thicknesses. With five cylinder lengths most standard door solutions can be managed for diverse situations and requirements.

Compelling benefits:

- No detailed door measurements required
- Easy ordering of the necessary components
- Simple installation (Click & Go)
- Quick replacement of mechanical cylinder with electronic cylinder

With the MATRIX AIR telescopic system, almost any door thickness is possible.

Slide the cylinder into the door, position knobs from left and right until they click into place. That's it!



The telescopic cylinder adapts automatically, eliminating previous time-consuming processes. No complicated preparations are needed and – thanks to the simple Click & Go system – installation can be performed in a few simple steps.

LESS IS MORE

MATRIX AIR. Reduces stock levels.



Modular design. Three components with a limited number of variants mean far fewer articles to manage: electronic knob + cylinder adapter + mechanical knob

Why keep thousands of articles in stock when a few dozen are all you need to meet requirements?

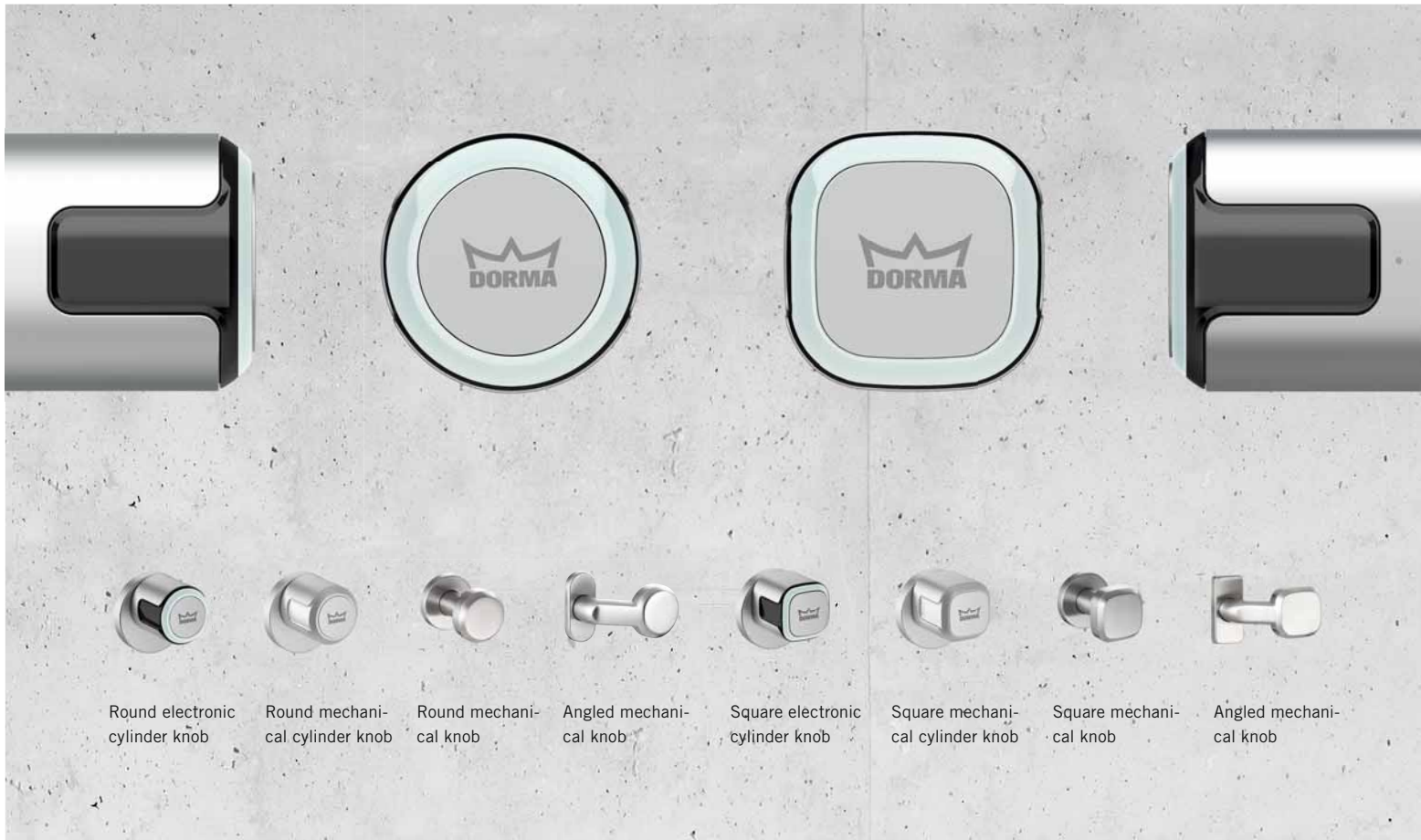
planning and ordering processes and significantly reduces stock levels.

The modular MATRIX AIR system is based on a modular principle and has a small number of different cylinder lengths. This simplifies

FLEXIBILITY IN INTERIOR DESIGN

Electronic MATRIX AIR and mechanical OGRO knobs. In the same look.

Round or square. Variability and uniform design in the cylinder shapes too.



Contemporary look, consistent design, intelligent internal mechanism – these plus points apply to all components from the MATRIX AIR family. The shape can be chosen individually – round or square. The architect and client decide what best suits the interior.

Combinable mechanical cylinders and knobs are also consistent with the new style.

The cylinder module and knob are separate units. The knob is engaged in stages into the pre-fitted cylinder module. Angle errors can be

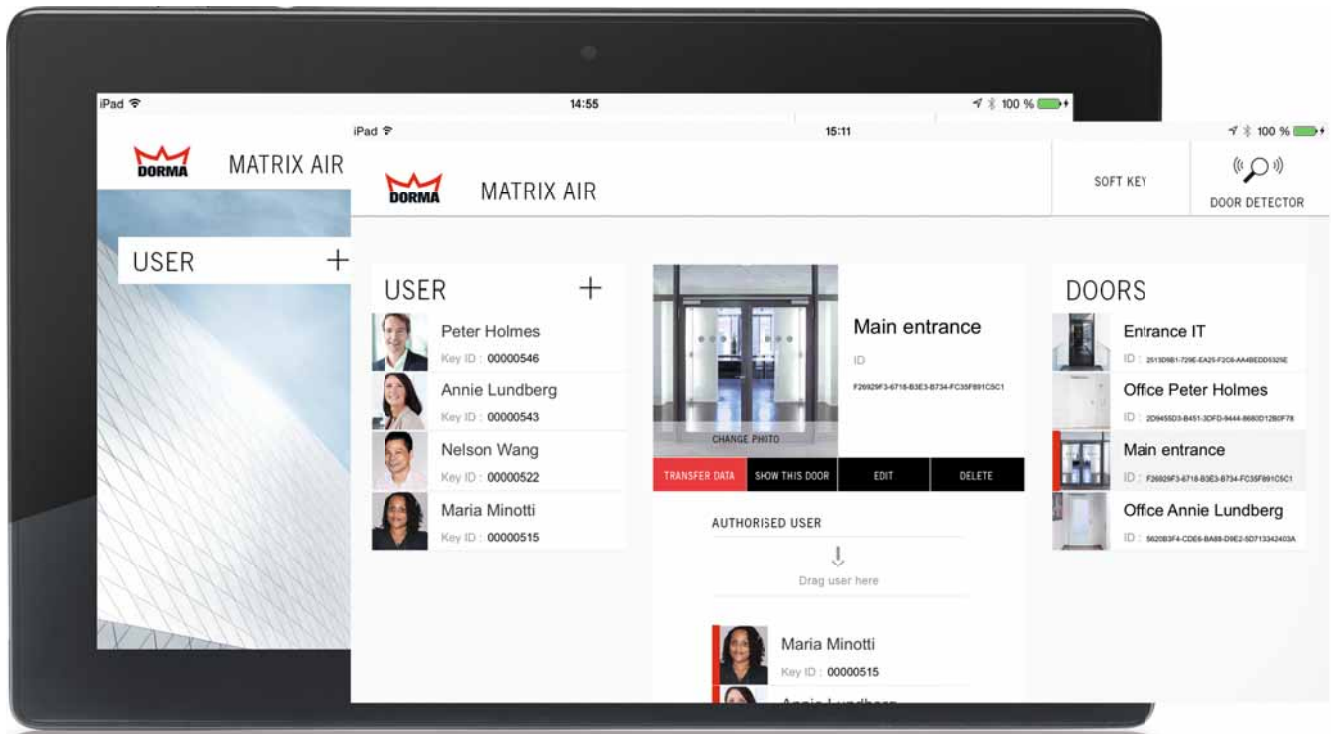
easily remedied thanks to the two-point mounting system.

Compelling benefits:

- Different options give design flexibility
- Long-term functionality: at least 100,000 cycles as per EN 1303

JUST ONE APP TO GET THINGS STARTED

MATRIX AIR. Easy, wireless configuration of all components by app.



It's child's play with the MATRIX AIR app. You can assign, delete and modify access rights with just a few taps of the finger. Simple and intuitive drag & drop functionality. Ideal for smaller applications.

TAKE THEM WITH YOU WHEN YOU MOVE

MATRIX AIR. Durable and future-proof.



A



B



When you move premises, you normally need to order cylinders for the new doors. With components from the MATRIX AIR range this is no longer necessary. They are movable and adapt easily to new doors thanks to their telescopic design.

Fittings can be converted from LH/ISO 6 to RH/ISO 5 without problem.

The components are also available with the latest reader technologies.

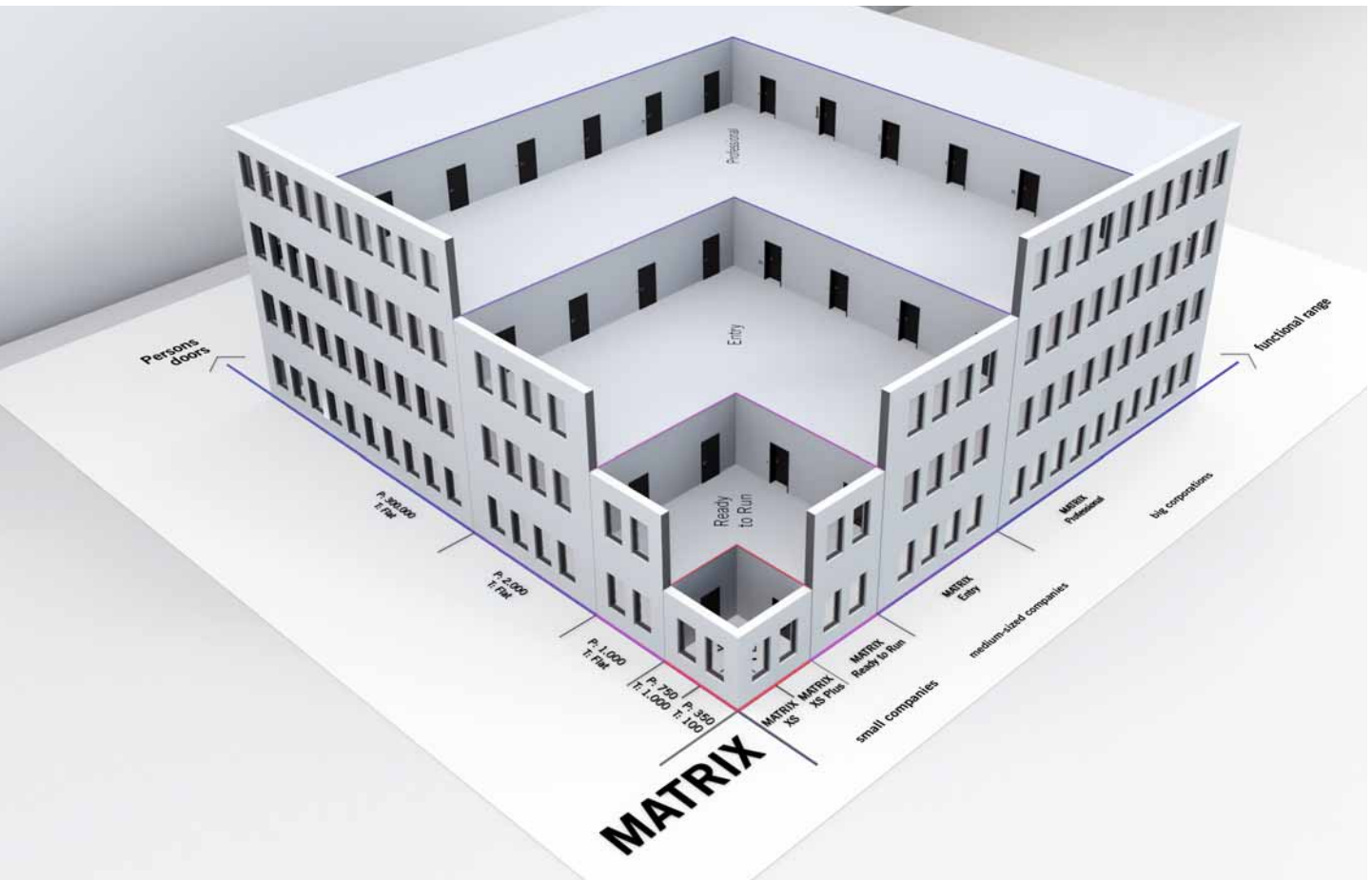
This makes MATRIX AIR a valuable, long-term, future-proof investment.

Compelling benefits:

- Flexible adaptation to new doors
- Movable thanks to wireless technology
- Economically sustainable system

NETWORKING MAKES LIFE EASIER

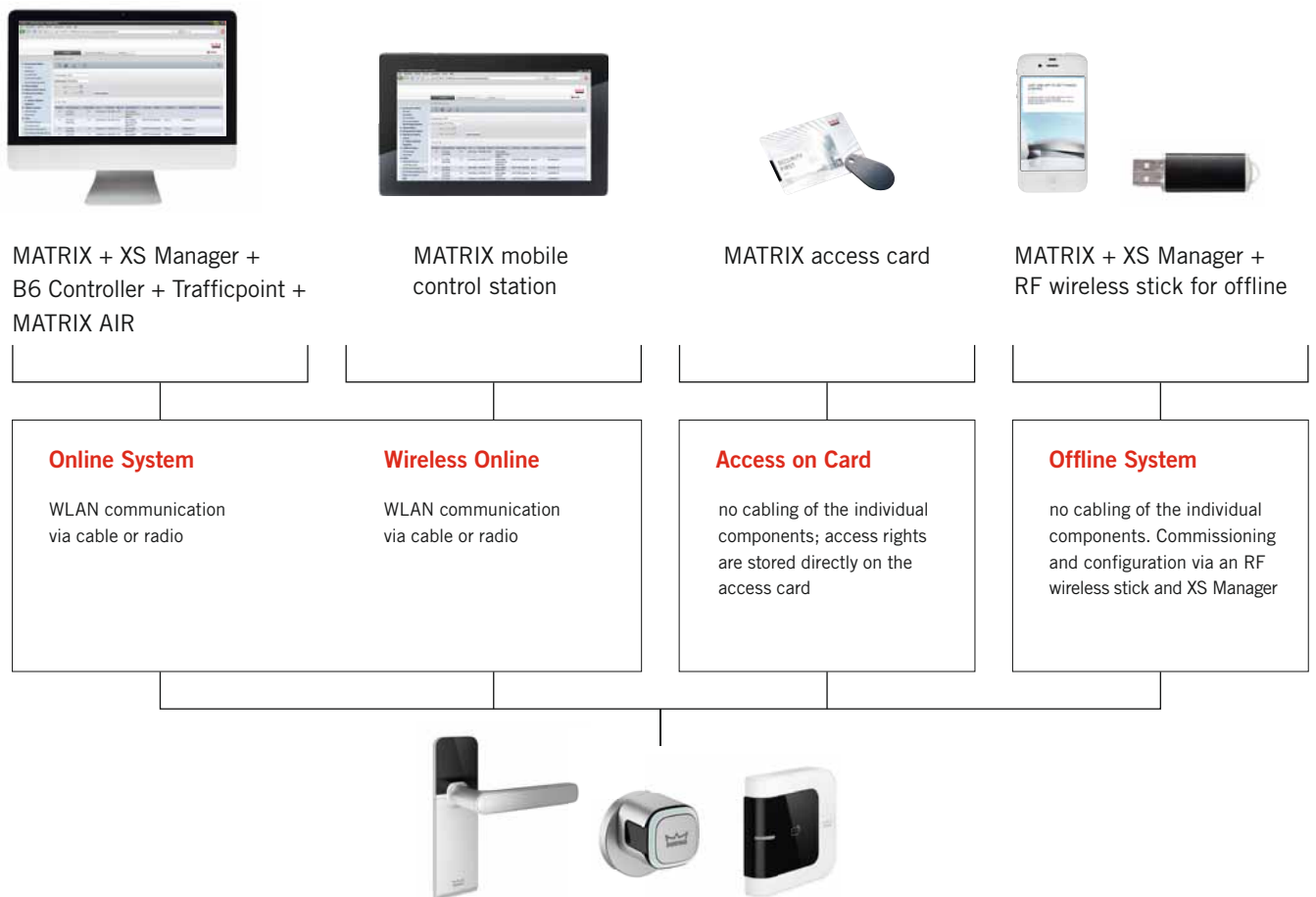
MATRIX AIR. A component in the MATRIX software system.



MATRIX software system. Modular and bespoke.

Flexibility and versatility are two of the greatest benefits of the modular MATRIX software design. From a simple locking system to a highly complex major client solution. From a licensed model for 25 people to an integrated system for 300,000 users. As the

requirements grow, so does MATRIX. MATRIX integrates seamlessly into existing structures and can be networked with other systems (including already existing ones), e.g. video verification or elevator control.



Electronic security door fittings can become part of a complete software system in combination with browser-based MATRIX software.

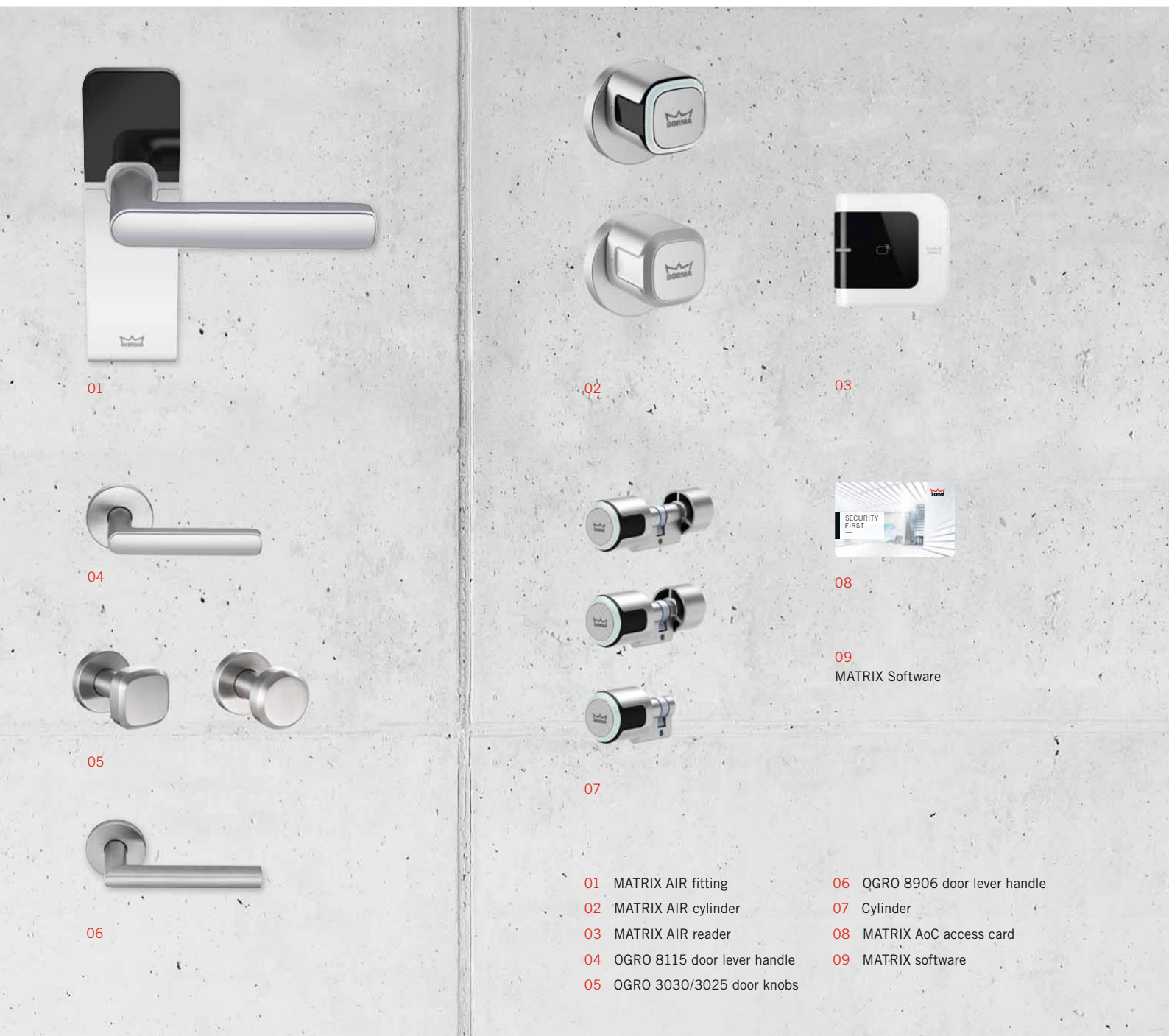
Access control, time management, emergency exit control, video surveillance, elevator control and other areas of digital building management can be combined on the MATRIX data platform.

MATRIX AIR and MATRIX software. A modular universal solution for small and large enterprises.

Mifare classic, Mifare DESFire, Legic Prime, Legic Advant reader technologies.

MODULARITY COMES AS STANDARD

MATRIX AIR. Electronic hardware technology with intelligent and variable configuration.



01

02

03

04

08

05

09

MATRIX Software

07

06

01 MATRIX AIR fitting

02 MATRIX AIR cylinder

03 MATRIX AIR reader

04 OGRO 8115 door lever handle

05 OGRO 3030/3025 door knobs

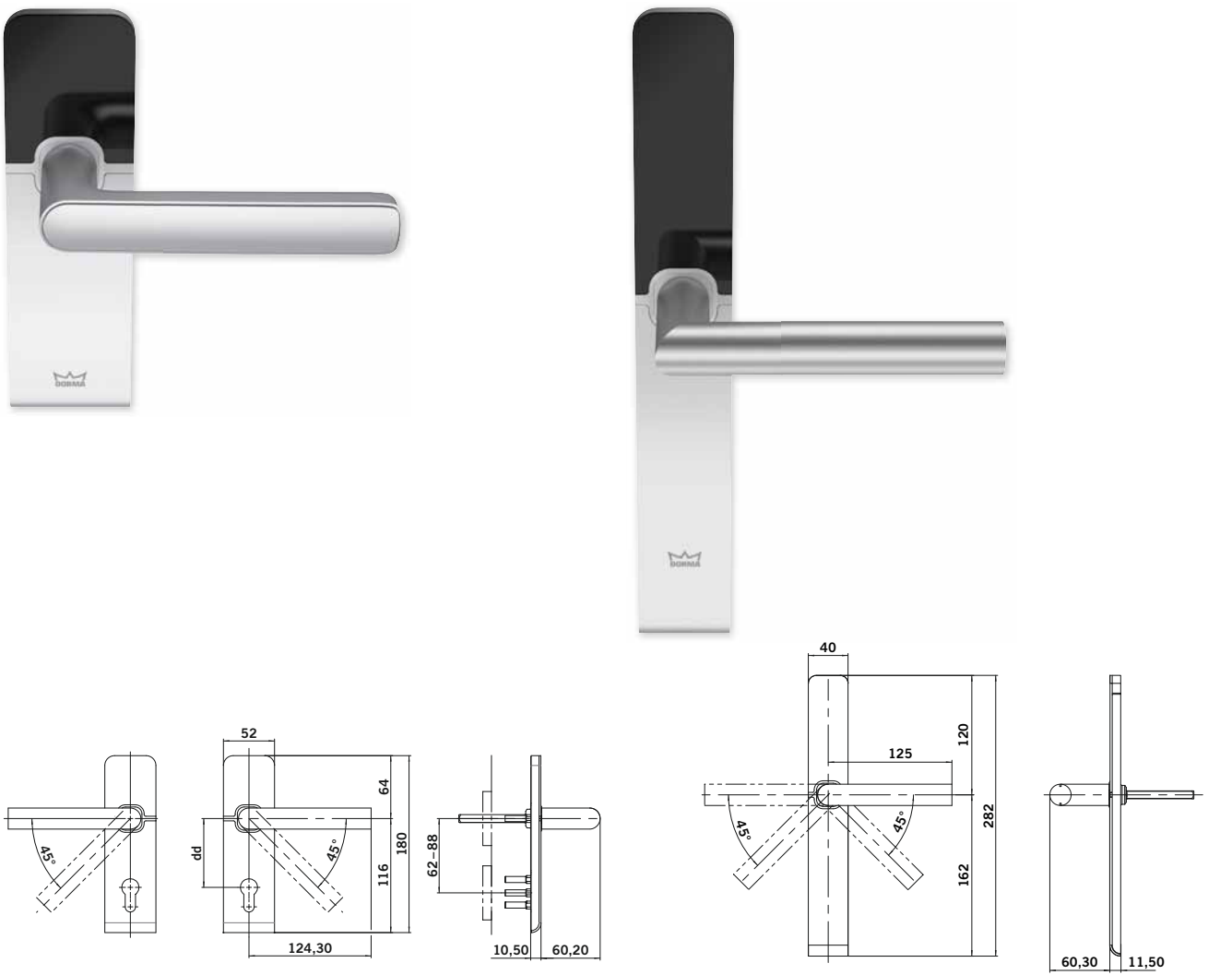
06 QGRO 8906 door lever handle

07 Cylinder

08 MATRIX AoC access card

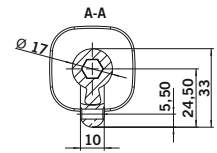
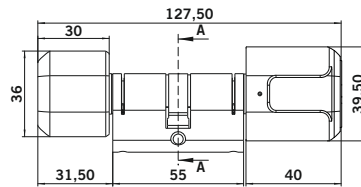
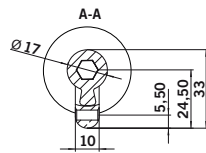
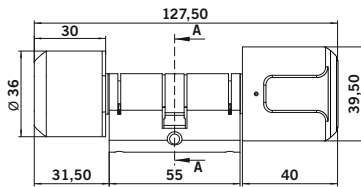
09 MATRIX software

MATRIX AIR FITTING



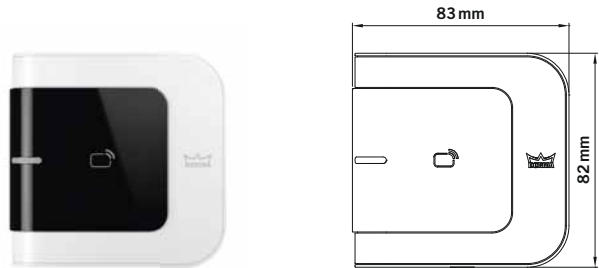
- Outstanding design
- LED coupling status signal
- Hassle-free installation
- For door thicknesses from 40 mm to 113 mm
- Narrow- and wide-stile (timber) doors
- Cap optionally in black or white
- Profile hole: Europrofile cap
- Operation: Standard + Design
- Reader: Mifare, Legic
- Operating modes: Online, AoC, Offline
- Radio: 868 MHz

MATRIX AIR CYLINDER



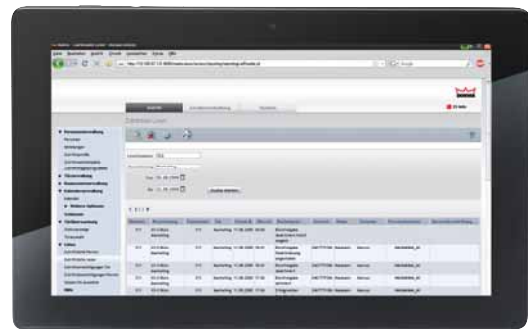
- Outstanding design
- LED coupling status signal
- Hassle-free installation
- telescopic technology
- For door thicknesses from 40 mm to 80 mm
- Limited stock keeping units (fewer than 100 single components)
- Makes planning easier
- Types: Normal, Half, Double Knob, Glass
- Reader: Mifare, Legic
- Profile: Europrofile
- Radio: 868 MHz

MATRIX AIR READER



- The reader reads the identification number of the presented card and forwards the data to the evaluation and control unit.
- The MATRIX central access control station checks the access rights.
- If the data is valid, the relevant blocking element is activated.
- The access is opened.
- The MATRIX central access control station evaluates access events

MATRIX SOFTWARE PLATFORM



- Multilingual, modular software platform.
- Transparently controls and manages various systems from a user interface.
- Access control and time recording are the core elements. They can be networked with many other systems (including existing ones) via open standard interfaces.
- Combines different buildings with different control systems and individual access authorizations with numerous exceptions to form a functional overall system.
- As well as digital door components, areas that are cabled together can also be activated.
- Excellent compatibility with other systems (e.g. in combination with video certification, elevator control)
- Flexible and versatile: from simple locking system to highly complex major client solution.
- Available as access control and time recording software.



DORMA Deutschland GmbH
DORMA Platz 1
58256 ENNEPETAL
GERMANY
Phone +49 2333 793-0
Fax +49 2333 793-4950
www.dorma.com