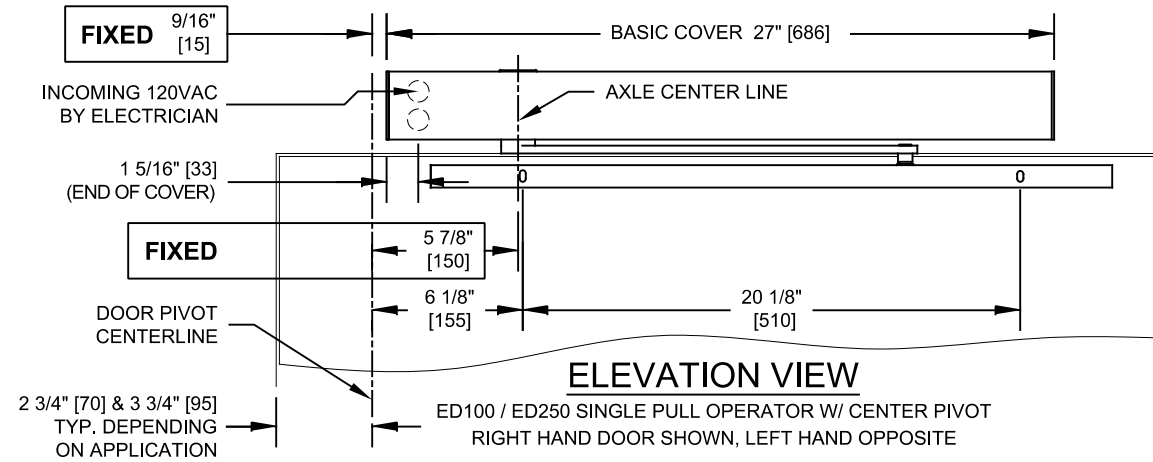
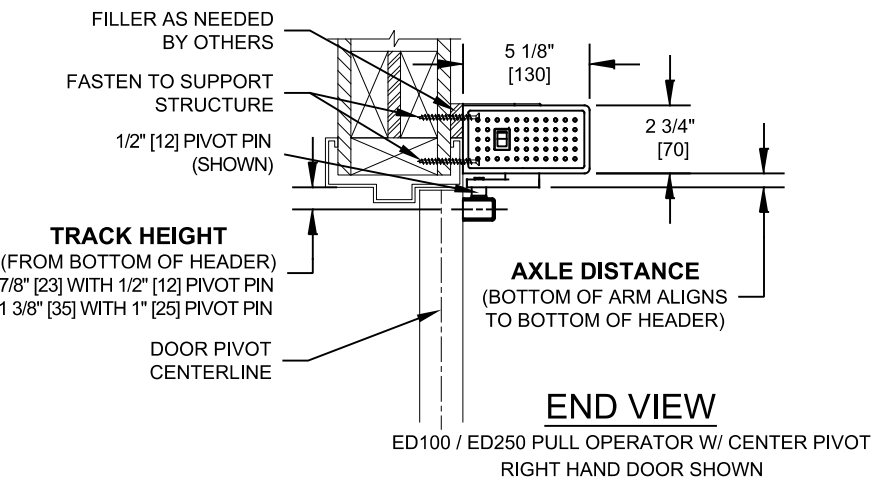
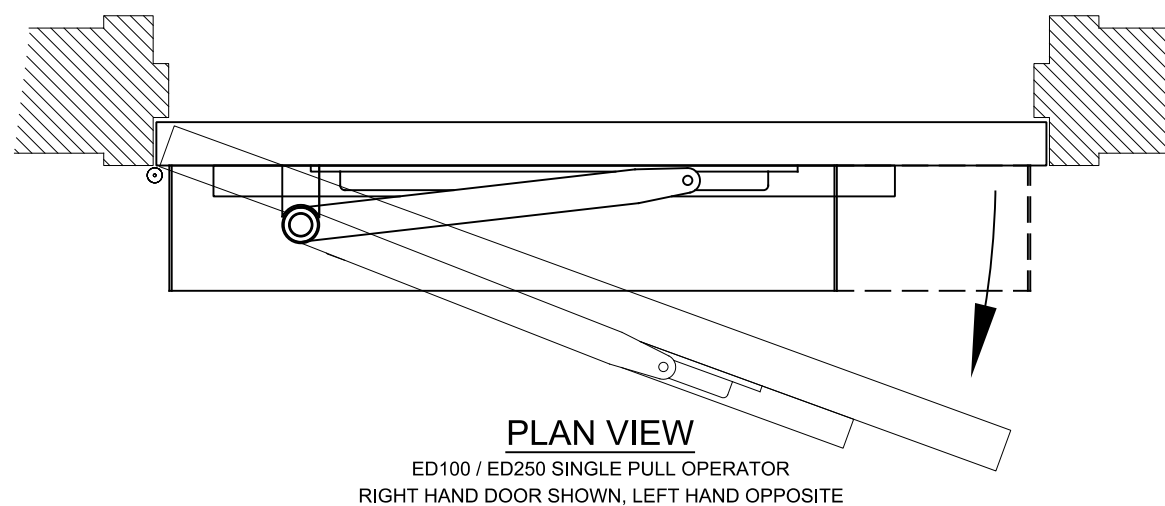
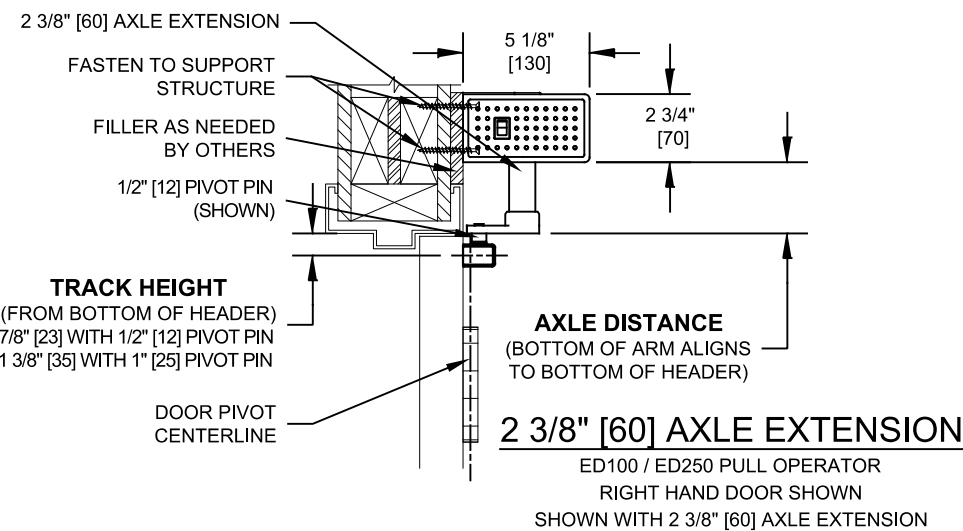
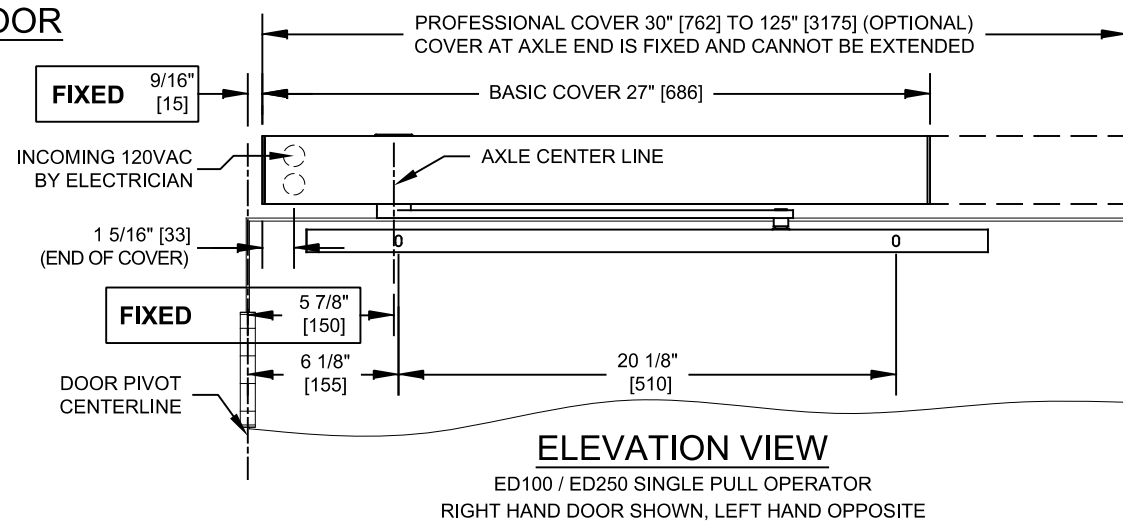
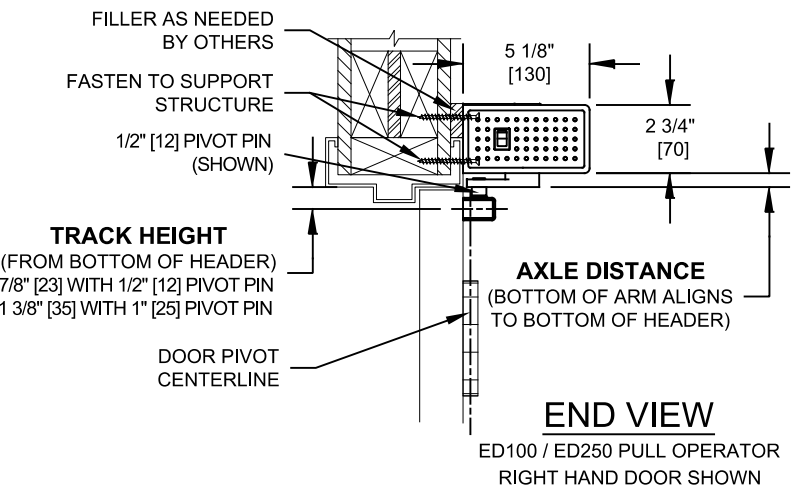


## CENTER PIVOTED DOOR



## HINGED DOOR



| PULL AXLE EXTENSION | PULL AXLE DISTANCE |                  |
|---------------------|--------------------|------------------|
| FLUSH               | 9/16" [14]         | STANDARD (SHOWN) |
| 13/16" [20]         | 1 5/16" [34]       |                  |
| 1 3/16" [30]        | 1 3/4" [44]        |                  |
| 2 3/8" [60]         | 2 15/16" [74]      |                  |
| 3 9/16" [90]        | 4 1/8" [104]       | FOR ED250 ONLY   |

### 1. The ED100 & ED 250 Single Pull package consists of:

- A. Operator:
  - ED100 LE / FE door leaf:
    - Maximum 43" [1092] wide, 220 lbs [100].
  - ED250 LE door leaf:
    - Maximum 38" [965] wide at 265 lbs [120].
    - Maximum 46" [1168] wide at 165 lbs [75].
  - ED250 FE door leaf:
    - Maximum 55" [1400] wide at 550 lbs [250].
    - Maximum 63" [1600] wide at 420 lbs [190].
  - Operator is NOT handed, can be Left or Right.
- B. Standard Cover length at 27" [686] extruded aluminum with plastic endcaps.
- C. Arm Kit:
  - Pull arm reveal = 0" to 1/8" [3] Max.
  - Standard flush axle extension kit.
- D. Connection Kit:
  - #14 x 2-1/2" Phillips Flat Head Wood Screws.
  - #14 x 1-1/4" Phillips Flat Head Self Drilling Screws.
  - #8 x 1-3/4" SPAX pan head wood screws to mount track.
  - M5 x 0.8 x 30mm pan head machine screws to mount track.
- E. Required ANSI labels.

### 2. Finishes:

- A. Extruded Cover:
  - Clear (BHMA 204) or Dark Bronze (BHMA 313) anodized finish (Standard).
  - Custom painted.
  - Custom anodized.
  - Cladding.
- B. Endcaps:
  - Silver or black painted.
- C. Arms:
  - Silver or black painted.

### 3. Typical Package Options:

- A. Professional cover (single) 30" [762] to 125" [3175].
- B. dormakaba Upgrade cards. (See brochure for details).
  - FE upgrade card.
  - Fire Protection upgrade card.
  - Professional upgrade card.
  - Barrier-Free Toilet upgrade card.
- C. Vario Cover Kit (a pair cover made with 2 singles) (see options page).
- D. Axle extensions (See chart for available lengths).
- E. Alternate deep pull arm with reveal = 0" to 2 1/4" [57] Max.

### 4. Drawing Notes:

- A. Drawing dimensions are in English & Metric units. Metric units are displayed as: 1" [25] millimeters.
- B. Operator dimensions:
  - Width x Height x Depth: 27" [686] x 2 3/4" [70] x 5 1/8" [130].
  - Operator weight: 26.5 lb [12 kg].
- C. Maximum opening angle of 110°.
- D. See installation manual for further details.

### 5. Power Requirements:

- A. 120V +/- 10%, 50/60 Hz, 6.6A peak (per operator). Service to header by electrician.

### 6. Standards of Compliance:

- A. UL 325 & CSA 22.2 (listed with ETL).
- B. Designed to comply with these standards depending on installation and application:
  - International Building Code (Section 1008).
  - ANSI/ BHMA 156.10 (Requires additional overhead activation and safety sensors) (May also require guide rails depending on configuration).
  - ANSI/ BHMA 156.19 (Requires additional knowing activation devices not shown in drawing).
  - NFPA 101 Life Safety Code (Section 7.2.1.9).
- C. Refer to Local, State, National or AHJ. Building Code for minimum door height and minimum/maximum width allowable for egress requirements.
- D. Tested to UL 10B 90 min. fire rated door assembly.

### 7. Contact dormakaba Architectural Services for more information:

- A. Phone: 1-844-SPEC-NOW (1-844-773-2669)

ED100&250 SINGLE PULL

Sheet 1 of 1

**dormakaba**

1 Dorma Dr., Reamstown, PA 17567 Phone: 717-336-3881

Drawing Title: **ED100 & ED250 AUTOMATIC SWING DOOR**

**SINGLE PULL FE & LE SURFACE APPLIED**

© dormakaba USA Inc. Subject to Change Without Notice. Date: 10-MAY-2022