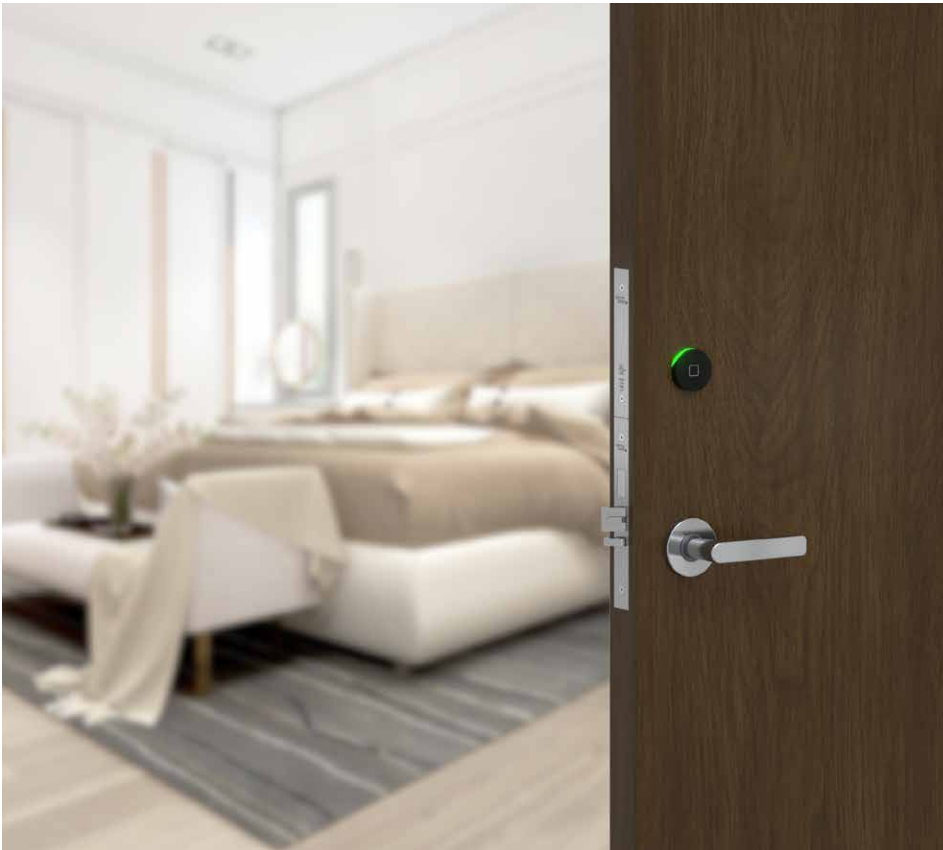


# Quantum Pixel<sup>+</sup>

## The art of seamless access



### Features

- Minimalist design
- 1" solid deadbolt (optional auto deadbolt)
- Extensive event memory in the lock
- Monitoring of the mortise lock in the event memory (door not locked indicator)
- Wear resistant construction and finish
- NFC programming and auditing
- Batteries last up to 2 years
- Low battery indicator alerts staff
- Lock programming and audit records are not erased during battery replacement
- Supports Bluetooth® Low Energy, enabling mobile access
- Supports RFID credentials
- Supports digital wallets

### Welcome to seamless access

Minimalist design. Maximum performance. The electronic hotel lock Quantum Pixel<sup>+</sup> provides an easy-to-use, secure, and flexible solution that is both visually sleek and high-performing. The lock electronics are hidden within the door, while the hardware design blends in with our range of rose and lever options. The result is a lock design that integrates seamlessly within any hotel décor.

### Next generation technology & mobile access

The Quantum Pixel<sup>+</sup> supports NFC, RFID, and Bluetooth® Low Energy (BLE) technology and can operate with dormakaba Mobile Access Solutions, allowing guests to use a card key or mobile access for their digital wallet, instantly turning their phone into a key.

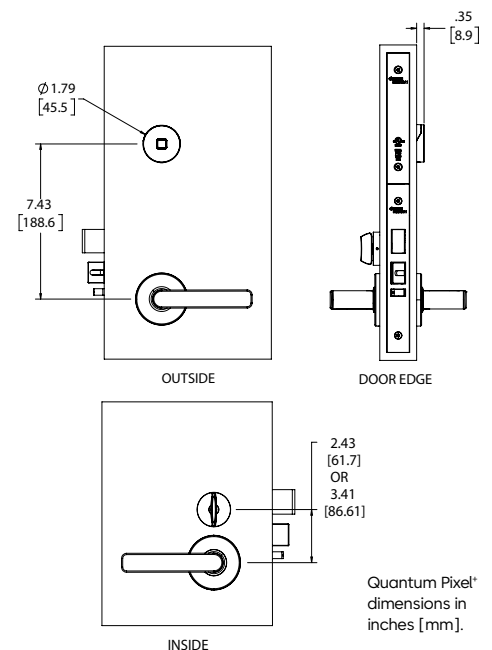
### Factsheet



### Access control management software

The Quantum Pixel<sup>+</sup> is supported by dormakaba's robust Ambiance access management software that features an array of access control workflows for both guest and staff access. Optionally, choose dormakaba's Ambiance RX online access management solution for remote access giving you anytime control, from anywhere.

### Applications

- Suitable for small to large-scale hotels
- Ideal for new projects or when doors are being replaced
- Retrofitting from previous generation Quantum Pixel



Mechanical features	
<b>Description</b>	Electronic mortise lockset with 1" (25.4 mm) throw deadbolt and 5/8" (15.9 mm) dead-locking latch bolt
<b>Handing</b>	Factory-handed mortise (left, right, left reverse, right reverse)
<b>Lever &amp; rose selection:</b>	Introducing our modern rose: a sleeker twist to a timeless classic (D 6.1 mm; Ø 63,5 mm). Available with the following levers:  Our traditional rose: A long-standing favorite (D 15,49 mm; Ø 71,88 mm). Available with the following levers: 
<b>Standard finishes</b>	Bright Chrome, Dark Mahogany, Satin Brass, Satin Chrome, Satin Nickel. Black (traditional rose levers only), Matte black (modern rose levers only).
<b>Deadbolt</b>	1" (25.4 mm) throw deadbolt and 5/8" (15.9 mm) dead-locking latch bolt
<b>Door thickness</b>	1 3/8" (37 mm) to 3" (76 mm) thickness. No mortise offset, no rabbeted doors.
<b>Weight</b>	Approx. 8.0 lbs (4 kg) with hardware
<b>Construction</b>	Reader: Polycarbonate (PC) and Polycarbonate/Acrylonitrile Styrene (PC/ASA). Levers: Brass, zinc, or stainless steel
<b>Standard backset</b>	2 3/4" (69.9 mm) backset ANSI mortise
<b>Locking options</b>	ANSI lock case with 1" lock front mortise. Options: automatic deadbolt, door ajar.
<b>Online configurations</b>	Online Ready: Door ajar mortise (ANSI lock case) required Online Enabled: Door ajar mortise (ANSI lock case) required, additional controller board equipped with low-power wireless module
Mobile Access options	
<b>Bluetooth® enabled</b>	Bluetooth® (BLE) included standard, enabling mobile credentials upgrade at any time
Lock operation	
<b>Date/time stamp</b>	Real-time; date and hours/minutes
<b>Interrogation</b>	Obtain key usage reports from the lock by using a handheld unit at the door, or increase efficiency by performing a remote interrogation using Ambiance RX online lock system (optional)
<b>Pre-registered keycards</b>	Configurable expiration dates; can be automatically set for check out date or manually applied when making key during check in
<b>Passage mode</b>	Set by authorized keycard or online system Can also be configured to perform an automated/pre-defined passage mode time
<b>Lockout mode</b>	Set by authorized keycard or online system
<b>Credentials</b>	Supports MIFARE Ultralight® C, *MIFARE Plus® EV2, and MIFARE® DESFire® EV3 credentials *MIFARE Plus® EV2: When used in enhanced security mode available in Ambiance v2.10+ Available in keycards, key fobs and wristbands
<b>Feedback &amp; Diagnostics</b>	Light indicator on the reader and handheld display
<b>Audit trail</b>	Up to 4,000 events
<b>Privacy override</b>	Emergency key and electronic override
<b>Batteries</b>	Alkaline - dormakaba provided battery pack; battery life is up to 2 years Low battery indicator: alerts staff that batteries need to be changed soon
Certifications & testing	
<b>Accessibility standard</b>	Complies with 2010 ADA Standards for Accessible Design – Art. 309.4 (Operable Parts). Lock shall be properly aligned with the mortise or latch and must be installed strictly according to the dormakaba installation instructions and the ADA Standards and Regulations applicable for each facility, to be able to fulfill compliance with ADA requirements.
<b>BHMA/ANSI</b>	Tests pending for: Grade One performance tests for ANSI/BHMA A156.13 - 2022 "American National Standard for Mortise Locks and Latches," and A156.25 - 2023 "American National Standard for Electrified Locking Devices." (Only locks tested and approved by non-biased third-party test lab are allowed in the "BHMA Certified Products Directory" found at <a href="http://www.buildershardware.com">www.buildershardware.com</a> )
<b>Fire rating</b>	<ul style="list-style-type: none"> <li>U.L. Listed: GYQS.R18481 "Electrically Controlled Single-point Locks and Latches." Evaluated in accordance with UL 10B and UL 10C. Listed for up to 3 hours on metal doors, 1 hour on composite fire doors, and 1/3 hour on wood core doors.</li> <li>EN 1634-1 30 minutes.</li> </ul>
<b>Electronics</b>	FCC Part 15 Class A and CE directive 2014/53/EU compliant, Environmental operating conditions, EMC Directive 2014/30/EU.
<b>Sustainability &amp; Environmental Regulations</b>	Assessment Pending Environmental Product Declaration (EPD). REACH, ROHS, Prop 65, and TSCA.
<b>Environmental operating conditions</b>	<ul style="list-style-type: none"> <li>Indoor side: 32 °F to 151 °F (0 °C to 66 °C)</li> <li>Outdoor side: -31 °F to 151 °F (-35 °C to 66 °C)</li> <li>0 % to 85 % non-condensing humidity at 86 °F (30 °C)</li> <li>IP rating: IP54</li> </ul>
<b>Warranty</b>	
<b>Standard warranty</b>	Two years
<b>Support programs</b>	dormakaba Service Plans (Platinum, Gold, Silver)

**Note:** The information provided on this sheet is intended for general reference only. Availability, features, and specifications may vary. For further details, please contact your local representative. MIFARE, MIFARE Ultralight, MIFARE Plus and MIFARE DESFire are registered trademarks of NXP B.V. | The Bluetooth® word mark and logos are registered trademarks owned by Bluetooth SIG, Inc. Subject to technical changes without prior notice. Version 12/2024. ©2024 dormakaba.

**Any questions? We would be happy to advise you.**

Contact us at: +800.999.6213