

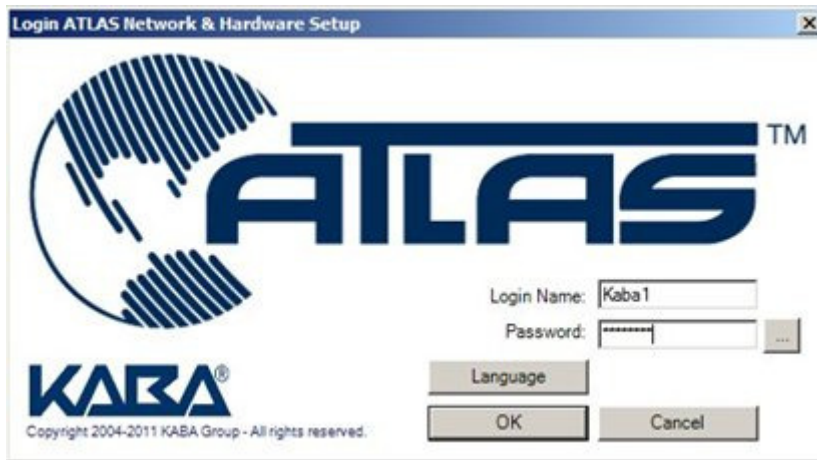
ATLAS Peripherals

Setting up ATLAS peripherals

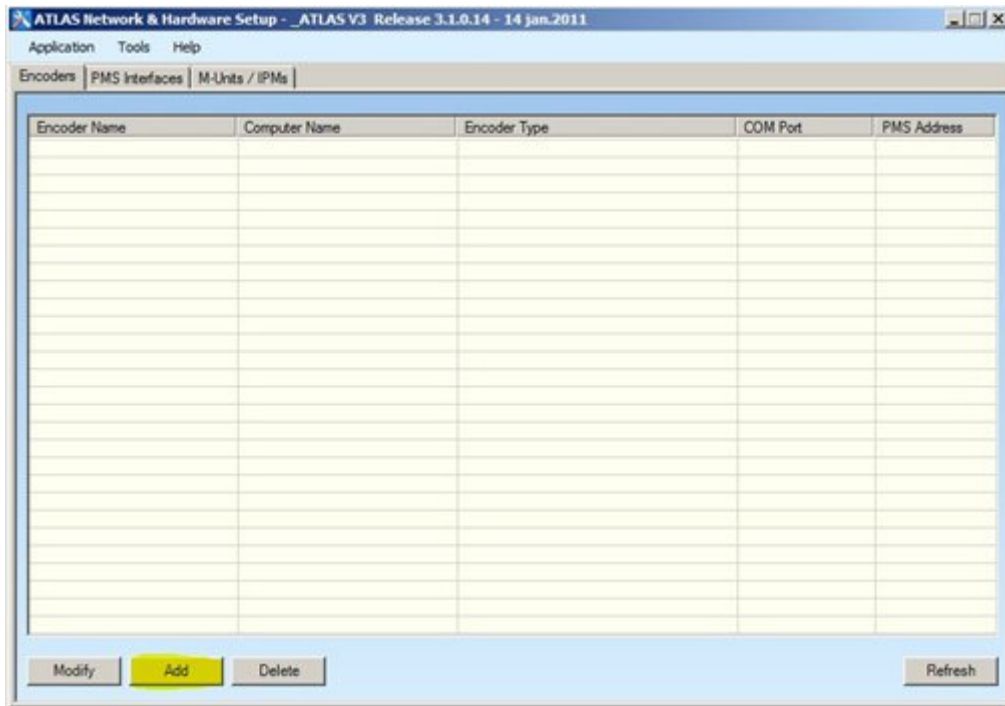
1. Click on **ATLAS Network and Hardware Setup**



2. Log in using the technical support user **Kaba1** and the default password.



3. First you must set up your encoders by clicking on **Add**



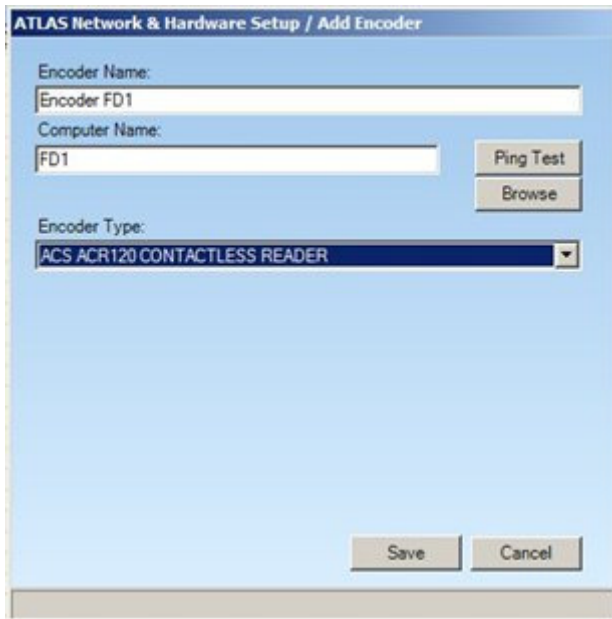
Enter the encoder name

The NETBios computer name of the workstation that the encoder is physically connected

The Type of encoder that you are installing

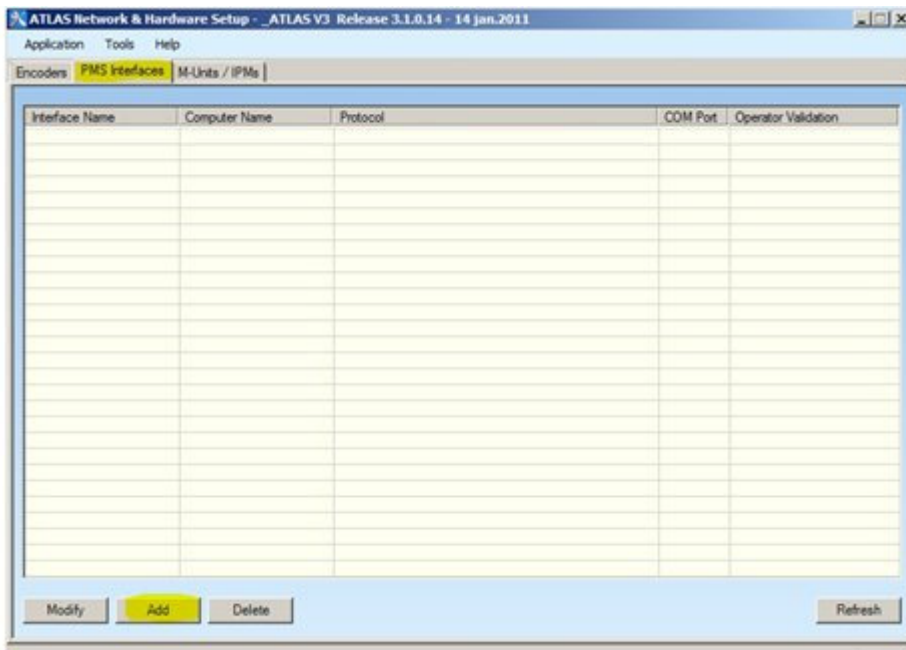
Then Click Save

This needs to be done for every encoder in the system



4. To Setup your PMS interface select the PMS Interfaces Tab and Click on Add

Note: This must be done even if using a web based PMS interface



Enter the interface Name

Enter the Computer name where the PMS service is installed

Select the Protocol type based on the PMS company you are interfacing with

Select the COM port where the interface is connected to

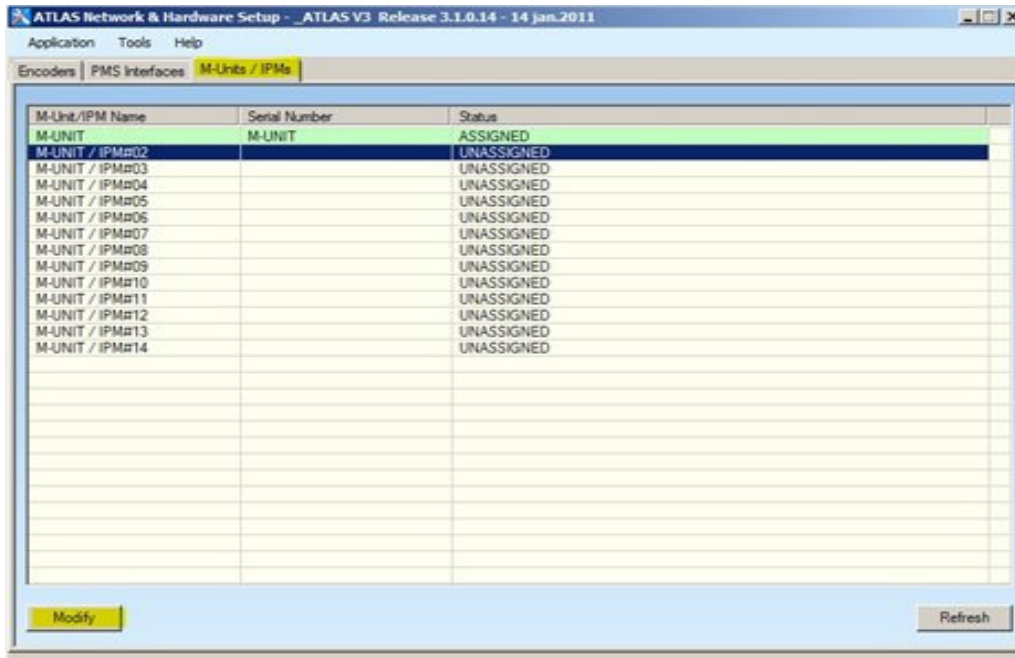
Select the Baud Rate and LRC seed based on the PMS company you are interfacing to

Click on Save

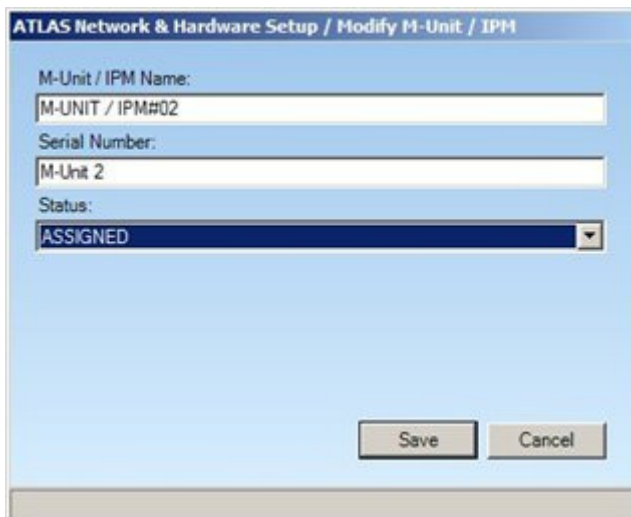
The screenshot shows a software dialog box titled "ATLAS Network & Hardware Setup / Add PMS Interface". It contains several input fields and buttons. The "Interface Name" field is filled with "Micros". The "Computer Name" field is filled with "ATLASSERVER" and has a "Browse" button next to it. Below this is a "Ping Test" button. The "Protocol Type" is set to "2 - MULTIPLE ENCODERS" in a dropdown menu. The "COM Port" is set to "COM1", "Baud Rate" is set to "9600", and "LRC Seed" is set to "00". There is an unchecked checkbox for "Enable Operator ID Validation". An "Information" section contains a yellow box with the text "PMS Company: pms" and "PMS Version: 888". At the bottom are "Save" and "Cancel" buttons.

Field	Value
Interface Name	Micros
Computer Name	ATLASSERVER
Protocol Type	2 - MULTIPLE ENCODERS
COM Port	COM1
Baud Rate	9600
LRC Seed	00

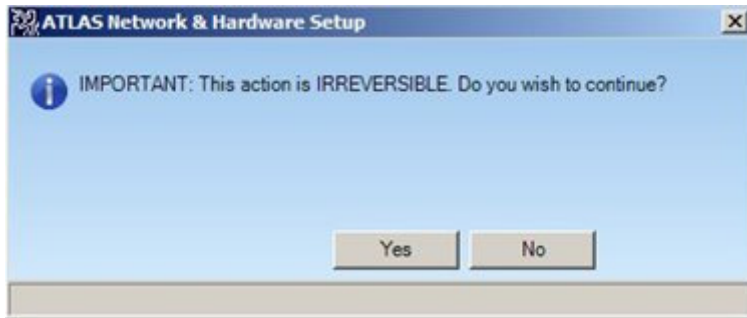
- To set up your M-Unit click on the M-Unit Tab. Your first M-Unit is configured by default but to add extra M-Units select an unassigned M-Unit and click on Modify



Enter the M-Unit information and switch status to assigned and click Save



You will get a warning message. Click Yes to continue



Your ATLAS peripherals are now set