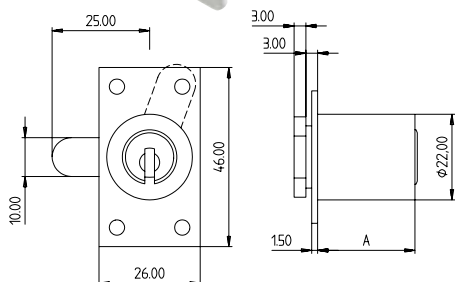
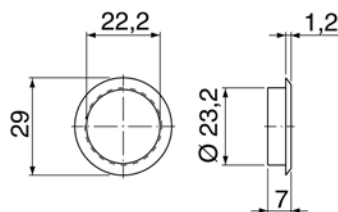


Furniture Cylinders

MZ.1032



A = Cylinder length in mm
Configuration shown for a door with hinges on the right



Rosette 1008A

Application:

Lock cylinders for furniture doors, left and right hinged and drawers. The key cannot be removed from the cylinder when open.

Specification:

Housing supplied in solid natural brass with nickel plating
Reversible key made from nickel silver
Rectangular fixing plate type BS 13A zinc-coated steel
Cam shape M5 zinc-coated steel

Included with the cylinder:

2 reversible keys (See "Special Functions and Keys" for key options)
Plastic key clip in dark red for Kaba penta, in dark blue for all other systems
Security Card for ownership registration and ordering duplicate keys
Installation and Maintenance Instructions

Premier Systems: 6 Kaba penta 7 Kaba quattro plus 12 Kaba gemini plus
Patent expired systems 4 Kaba quattro S 2 Kaba gemini S
Old systems 3 Kaba quattro¹⁾ 1 Kaba gemini¹⁾
Dealer systems 5 Kaba experT²⁾ 19 Kaba maTriX²⁾
Old dealer system 9 Kaba gemini T²⁾

Lengths Standard - from 25 to 75 mm in 5 mm steps
60 and 70mm available on request only

Options (See „Special Functions and Keys“ for details)

BAZ	Construction key	BAZ3	Construction key 3
RE	Right hinged door	LI	Left hinged door
OB	Top hinged door	UN	Bottom hinged door
M11B	Cam shape 11B, hinge position not specified		

Accessories

Order Code	Drawing No.	Description
ROSETTE.1008A.*	1008A-25	Slide on rosette for furniture cylinder Ø 22 mm, available in all surface finishes (* specify surface finish code at the end of the order code)

Standard Surface Finishes

NI - Nickel plated	MS - Brass natural	
--------------------	--------------------	--

Optional Surface Finishes

BH - brown light	MP - Brass polished	CR - Chrome standard
BM - brown medium	MSA - Brass antique	CRM - Chrom dull
BD - brown dark		CRP - Chrome polished
NIC - chemically nickel plated		
GO - gold plated		

Order Code System

System Code.Cylinder.Type.Length.Surface finish.hinge position.(cam)option

Example:

6.MZ.1032.40.NI.RE = penta.furniture cylinder.1032.nickel plated.right hinged door

Please note that certain options, finishes and dimensions may be subject to extended factory lead times. Please contact our office via email on sales.uk@kaba.com or telephone (0) 870 000 5625.

¹⁾ Kaba gemini and Kaba quattro are only offered for existing master key systems.

²⁾ Kaba experT, Kaba maTriX and Kaba gemini T are only sold to authorized dealers.