

NOTES:

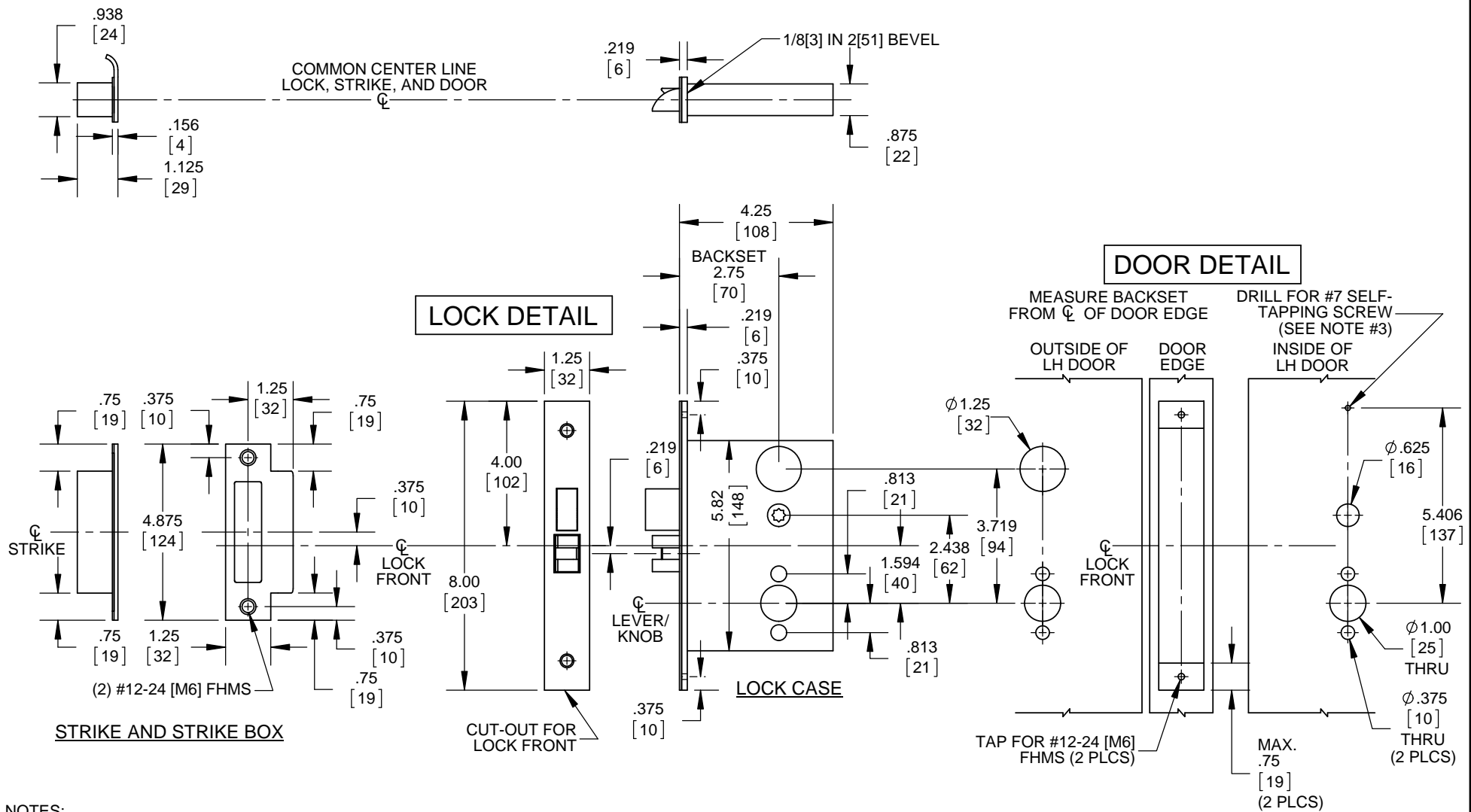
1. DIMENSIONS ARE IN INCHES/[MM].
2. DO NOT SCALE DRAWING.
3. FOR TOP MOUNTING HOLE OF M ESCUTCHEON, USE TRIM TO LOCATE AND SECURE WITH SCREW PROVIDED. (FOR #7 FHWS, USE 3/32" DRILL)
4. FOR #12 FHWS, USE 9/64" (.140") DRILL.
5. FOR #12-24 FHMS, USE #16 (.177") DRILL & TAP.

DOOR CUT-OUTS AS INDICATED UNDER DOOR DETAIL.  
FRAME FOR STRIKE SHOWN UNDER LOCK DETAIL.

**WOOD DOORS - A&B Rose Trim, M Escutcheon Trim**  
M9953, M9956, M9959, M9973, M9980, M9985



DORMA Architectural Hardware  
Reamstown, PA 17567



NOTES:

1. DIMENSIONS ARE IN INCHES/[MM].
2. DO NOT SCALE DRAWING.
3. FOR TOP MOUNTING HOLE OF M ESCUTCHEON, USE TRIM TO LOCATE AND SECURE WITH SCREW PROVIDED. (FOR #7 FHWS, USE 3/32" DRILL)
4. FOR #12 FHWS, USE 9/64" (.140") DRILL.
5. FOR #12-24 FHMS, USE #16 (.177") DRILL & TAP.

DOOR CUT-OUTS AS INDICATED UNDER DOOR DETAIL.  
FRAME FOR STRIKE SHOWN UNDER LOCK DETAIL.

**STEEL DOORS - A&B Rose Trim, M Escutcheon Trim**  
M9953, M9956, M9959, M9973, M9980, M9985



DORMA Architectural Hardware  
Reamstown, PA 17567