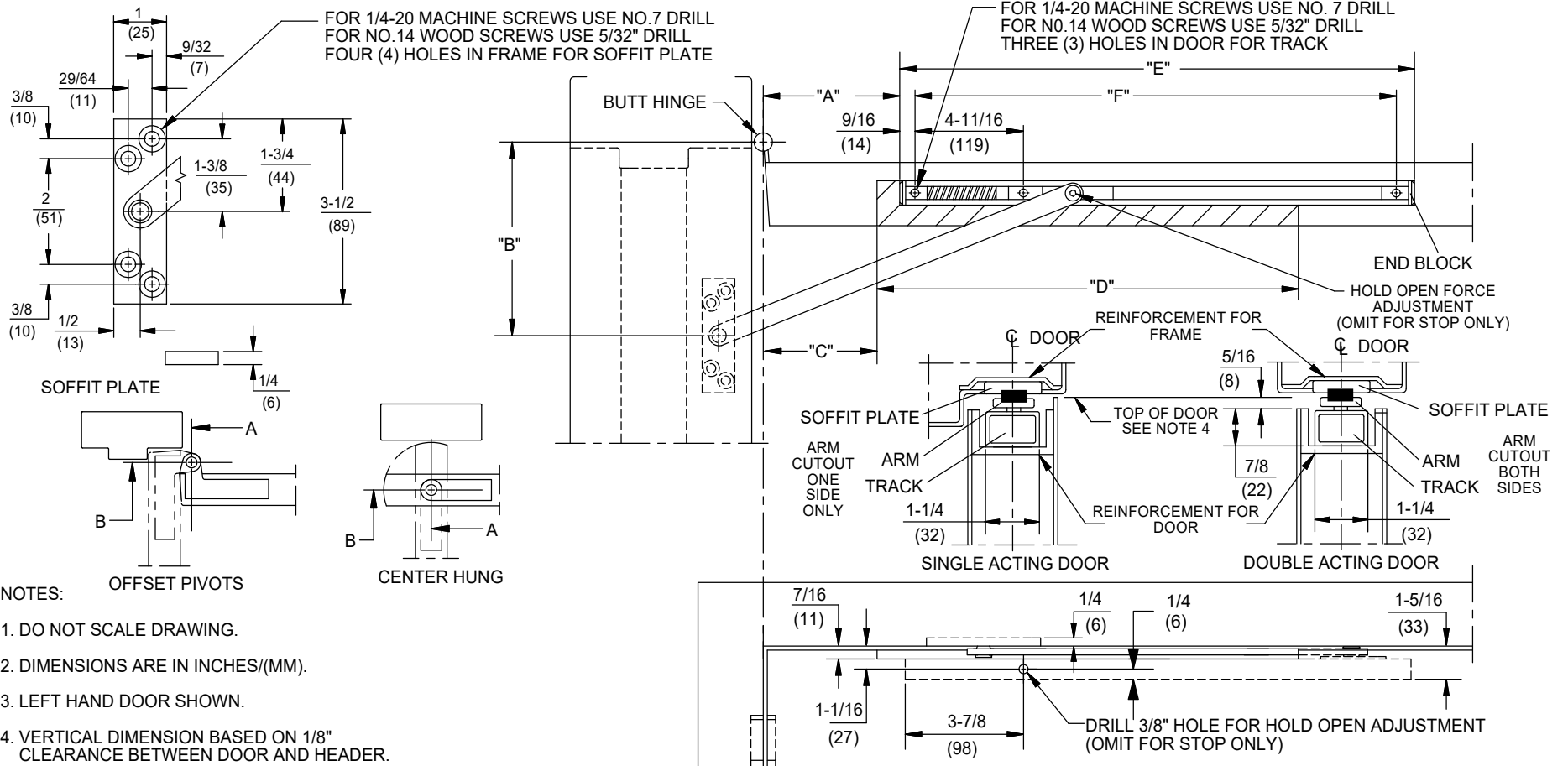


INSTALLATION INSTRUCTIONS:

1. Determine unit type supplied: (S) STOP ONLY or (H) STOP & HOLD.
2. Determine degree of hold-open or dead stop required and select the "A", "B", "C", "D" and "E" dimensions from the opposite side of this page.
3. Prepare door and frame according to the template found on this page.
4. Place end blocks into each end of track. Install track and arm assembly to door, making sure spring faces hinges.
5. Attach soffit plate to frame.

*** ADDITIONAL INSTRUCTIONS (HOLD-OPEN UNITS):**

6. Adjust hold open to on or off position. One direction on-opposite direction off.
7. Adjust the holding force by inserting a 5/64" hex key into the slide shoe bolt. Turn right to increase and left to decrease holding force.
8. Open door until slide shoe engages with hold-open.
9. To release the door, pull until the slide shoe disengages.



NOTES:

1. DO NOT SCALE DRAWING.
2. DIMENSIONS ARE IN INCHES/(MM).
3. LEFT HAND DOOR SHOWN.
4. VERTICAL DIMENSION BASED ON 1/8" CLEARANCE BETWEEN DOOR AND HEADER.

STOP AND HOLDER SERIES: 911H - 913H, 911S - 913S
HEAVY DUTY CONCEALED STOP/HOLD
SINGLE ACTING AND DOUBLE ACTING DOORS
CENTER HUNG, 3/4" OFFSET AND 4-1/2" X 4-1/2" HINGES

**910S, 910H SERIES
HEAVY DUTY CONCEALED OVERHEAD STOP AND HOLDER**



UNIT	DEGREE OF OPENING	4-1/2" HINGES OR 3/4" PIVOTS					CENTER HUNG					DIM "E"	DIM "F"
		DOOR RANGE	DIM "A"	DIM "B"	DIM "C"	DIM "D"	DOOR RANGE	DIM "A"	DIM "B"	DIM "C"	DIM "D"		
911 S	85° STOP ONLY	24 to 34	5-1/8	5-1/2	3-1/2	10-1/2	27 to 37	4-7/16	7	6	10-1/2	18-5/8	17-1/4
	90° STOP ONLY		4-11/16	5-1/2	3-1/2	10-1/2		3-13/16	7	6	10-1/2		
	95° STOP ONLY		4-1/4	5-1/2	3-1/2	10-1/2		3-3/16	7	6	10-1/2		
	100° STOP ONLY		3-7/8	5-1/2	3-1/2	10-1/2		-	-	-	-		
	105° STOP ONLY		3-9/16	5-1/2	3	11-1/4		-	-	-	-		
	110° STOP ONLY		3-1/4	5-1/2	2-1/4	12		-	-	-	-		
911 H	85° STOP & HOLD	24 to 34	4-7/16	5-1/2	3-1/2	11	27 to 37	4-7/16	7	6	10-1/2	18-5/8	17-1/4
	90° STOP & HOLD		4	5-1/2	3-1/2	11-1/2		3-13/16	7	6	10-1/2		
	95° STOP & HOLD		3-9/16	5-1/2	3-1/8	11-3/8		3-3/16	7	6	10-1/2		
	100° STOP & HOLD		3-3/16	5-1/2	2-1/8	12-3/8		-	-	-	-		
	105° STOP & HOLD		2-7/8	5-1/2	1-1/2	13		-	-	-	-		
	110° STOP & HOLD		2-1/2	5-1/2	0	14-1/2		-	-	-	-		
912 S	85° STOP ONLY	34-1/8 to 44	11	10-1/4	8-1/4	18-3/4	37-1/8 to 46	11-3/4	10	9	16-1/2	22-1/4	20-3/4
	90° STOP ONLY		10-1/8	10-1/4	8-1/4	18-3/4		10-1/4	10	9	17-7/8		
	95° STOP ONLY		9-5/16	10-1/4	8-1/4	18-3/4		10	10	9	16-1/2		
	100° STOP ONLY		9-13/16	8-1/4	6-1/4	18-1/4		9-3/8	9	8	16-1/2		
	105° STOP ONLY		9-1/4	8-1/4	6-1/4	18-1/4		8-11/16	9	8	16-1/2		
	110° STOP ONLY		8-3/4	8-1/4	6-1/4	18-1/4		8-1/8	9	8	16-1/2		
912 H	85° STOP & HOLD	34-1/8 to 44	10-5/16	10-1/4	8-1/4	18-3/4	37-1/8 to 46	11-3/16	10	9	16-1/2	22-1/4	20-3/4
	90° STOP & HOLD		9-1/2	10-1/4	8-1/4	18-3/4		10-5/16	10	9	16-1/2		
	95° STOP & HOLD		8-3/4	10-1/4	8-1/4	18-3/4		9-7/16	10	9	16-1/2		
	100° STOP & HOLD		9-3/16	8-1/4	6-1/4	18-1/4		9-7/16	9	8	16-1/2		
	105° STOP & HOLD		8-5/8	8-1/4	6-1/4	18-1/4		8-3/4	9	8	16-1/2		
	110° STOP & HOLD		8-1/8	8-1/4	6-1/4	18-1/4		8-3/16	9	8	16-1/2		
913 S	85° STOP ONLY	44-1/8 to 54	16-1/16	13-1/2	11-1/2	22	46-1/8 to 54	16-1/16	13	12	25	27-3/8	26
	90° STOP ONLY		15-1/16	13-1/2	11-1/2	22		14-15/16	13	12	25		
	95° STOP ONLY		14-13/16	13-1/2	11-1/2	22		13-13/16	13	12	25		
	100° STOP ONLY		14-13/16	12	10	22-1/2		12-15/16	12	11	25		
	105° STOP ONLY		13-1/2	12	10	22-1/2		12	12	11	25		
	110° STOP ONLY		12-13/16	12	10	22-1/2		11-1/4	12	11	25		
913 H	85° STOP & HOLD	44-1/8 to 54	14-9/16	13-1/2	11-1/2	22	46-1/8 to 54	15-7/16	13	12	25	27-3/8	26
	90° STOP & HOLD		13-7/16	13-1/2	11-1/2	22		14-5/16	13	12	25		
	95° STOP & HOLD		12-3/8	13-1/2	11-1/2	22		13-3/16	13	12	25		
	100° STOP & HOLD		12-7/16	12	10	22-1/2		13	12	11	25		
	105° STOP & HOLD		11-5/8	12	10	22-1/2		12-1/16	12	11	25		
	110° STOP & HOLD		10-7/8	12	10	22-1/2		11-1/4	12	11	25		

- a. All 4-1/2" WIDE HINGE and 3/4" OFFSET PIVOT dimensions are for 1-3/4" thick doors, CENTER HUNG are for 1-3/4" to 2-1/4" thick doors. For additional door thicknesses consult DORMA's Technical Services department.
- b. STOP is the maximum degree to which the door will open when the shock spring is fully compressed.
- c. STOP & HOLD is the degree the door is held open. The shock absorber spring compresses while the door moves to the dead stop position which is several degrees greater.
- d. All values are in inches.