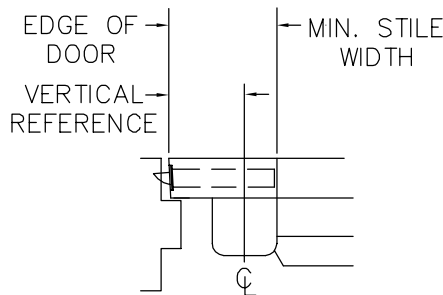
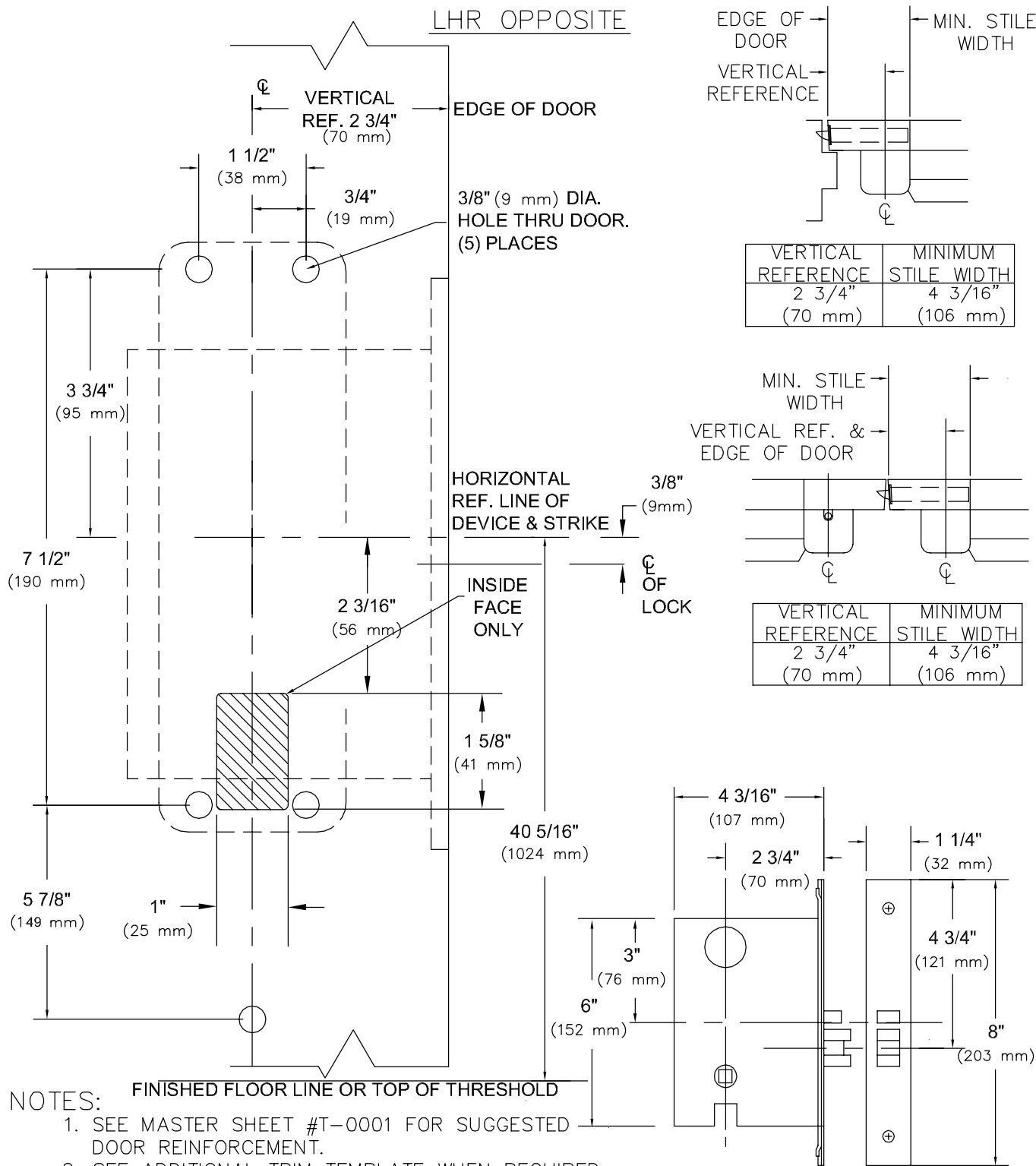
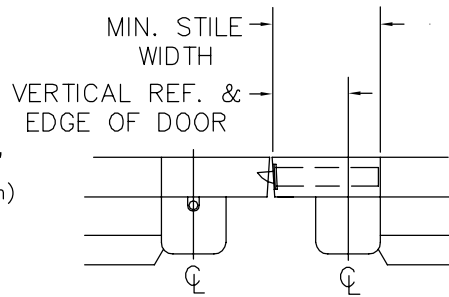


RHR SHOWN  
LHR OPPOSITE



VERTICAL REFERENCE	MINIMUM STILE WIDTH
2 3/4" (70 mm)	4 3/16" (106 mm)



VERTICAL REFERENCE	MINIMUM STILE WIDTH
2 3/4" (70 mm)	4 3/16" (106 mm)

NOTES:

1. SEE MASTER SHEET #T-0001 FOR SUGGESTED DOOR REINFORCEMENT.
2. SEE ADDITIONAL TRIM TEMPLATE WHEN REQUIRED.
3. DEVICE WILL COVER STANDARD SDI CUTOUT.

REV. No. 4

REVISION: Trim Designation

DATE: 12-31-03

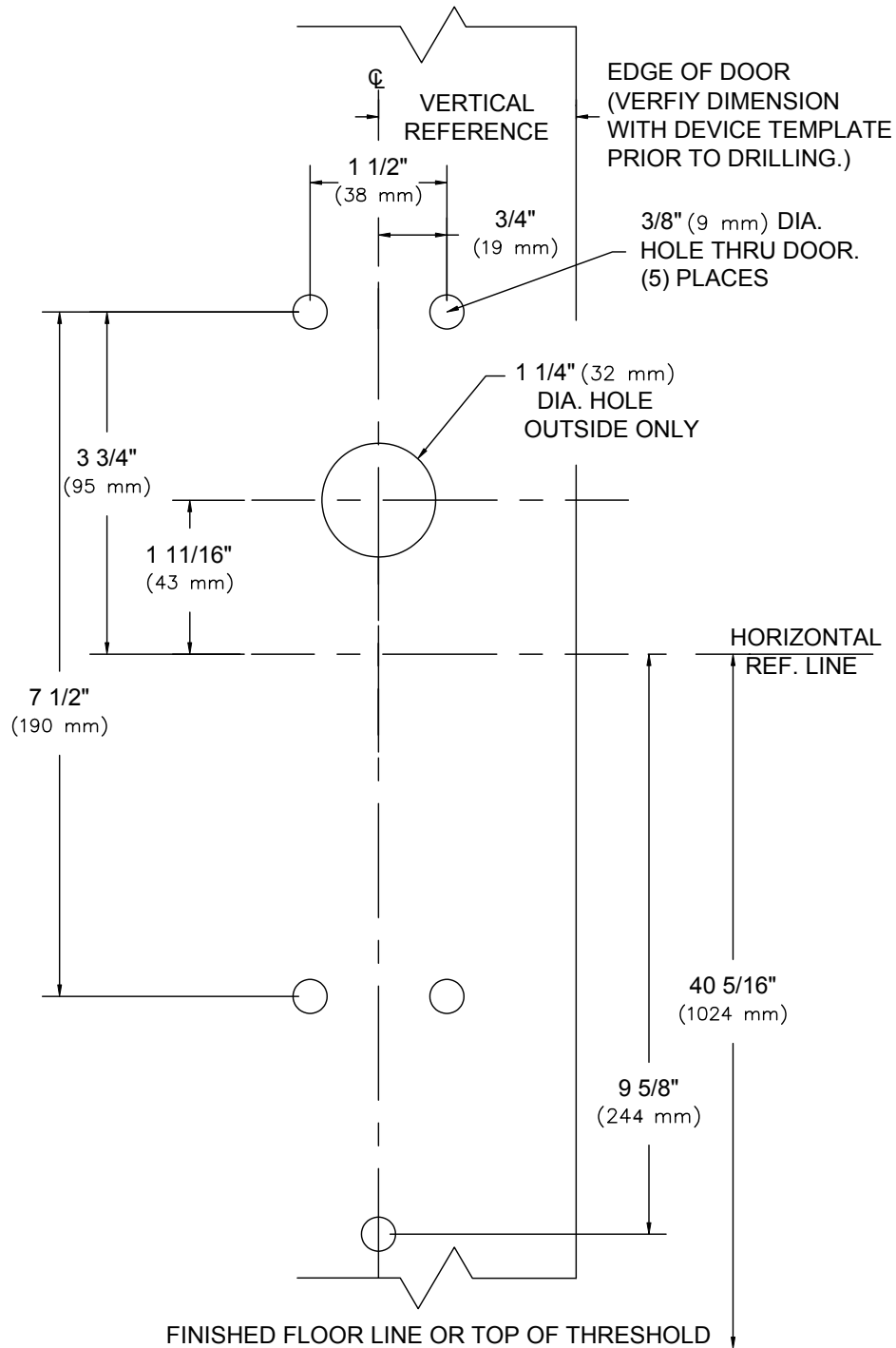


9500 & F9500 x VODT & NPTDT  
 9500 & F9500 x HTT22M, or HRT22M  
 9500 & F9500 x HTT05M, or HRT05M  
 9500 & F9500 x V102, V302, PTT02, PRT02  
 9500 & F9500 x V103M, V303M, PTT03M, PRT03M  
 MORTISE TYPE EXIT DEVICE

TEMPLATE NUMBER


T-9502④

RHR SHOWN  
LHR OPPOSITE



NOTES:

1. SEE MASTER SHEET #T-0001 FOR SUGGESTED DOOR REINFORCEMENT.
2. SEE ADDITIONAL DEVICE TEMPLATE WHEN REQUIRED.
3. "T" STYLE TRIM WILL COVER STANDARD SDI CUTOUT.

REV. No. 5	REVISION: Trim Designation	DATE: 12-31-03
	<p>V003M, V103M, V303M, PTT03M or PRT03M TRIM</p>	<p>TEMPLATE NUMBER T-9008⑤</p>