

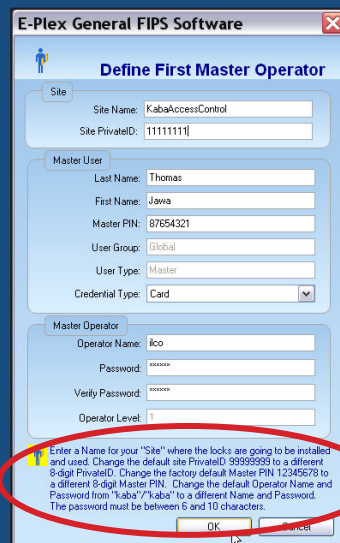


First, Install the E-Plex® FIPS Software per the on-screen instructions

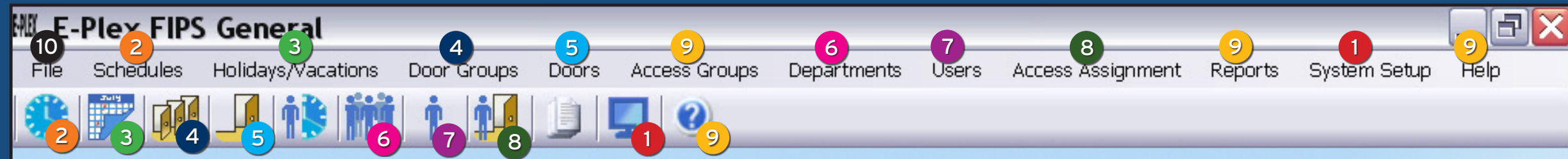


Once software is properly installed, click the new icon on your desktop

Important: For E-Plex FIPS High Assurance install, you will also need to configure your FIPS cards "path authentication/builder" configuration involving CoreStreet's "Path Builder" software module. Please consult with your IT personnel.



Follow these instructions to define your Site Private ID, Master User and Master operator of your FIPS system



1

Set System Parameters (one time setup)

2

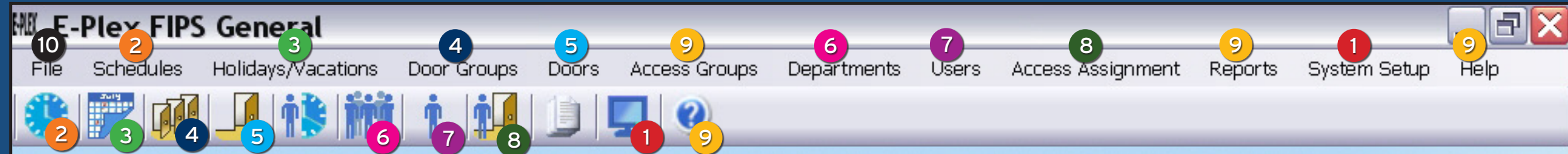
If access schedules other than 'Always' are desired, click to add additional schedules

3

To add holidays or vacations if desired, enter information for each and save

4

A default Door Group called "Default" and a default Door Group Manager called "Global Manager" already exist in the system; they can be renamed. One DG Manager will be automatically assigned to a Door Group by the system



5

To create each Door, select which Door Group you want it to belong to, click Add, enter Door Information and Save

6

A default Department called "Global" already exists in the system which can be renamed. It is necessary to have a Department before users can be added.

7

Click Add to add Users. Enter User information, select Department and User Type. You can either enroll a permanent FIPS based smart ID card (PIV, CAC, FRAC, TWIC, etc.) or a temporary DESFire smart card for this user. After selecting the card type to enroll, follow the screen prompts.

8

To assign Users and Schedules to Doors, click Access Management and follow on-screen instructions

9

For details on these features and other information, click Help to view or print the FIPS Software User Guide.

10

You are now ready to transfer door configuration and user access data to the Integrated M-Unit to program locks. Refer to the PC M-Unit data transfer, especially if you are using a "separate" Netbook/Laptop PC to do the transfer as "Manual Sync".