

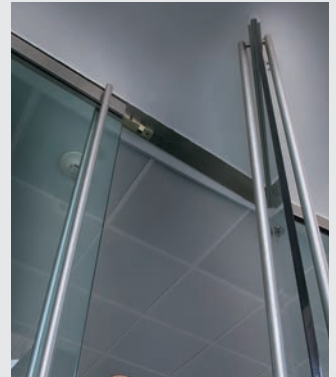


DORMA PANIC HARDWARE

—
Panic Hardware and Dummy Pulls for
tempered glass doors



DORMA PANIC HARDWARE



Panic Devices

- DG1000 Series top latching bolt with manual and electric strikes
- DORMA interchangeable core cylinders

Dead Bolts

- DG1000 top locking bolt with interchangeable core cylinders or cylinder and thumbturn
- DG1100 bottom locking bolt with interchangeable core cylinders or cylinder and thumbturn
- DG1300 top or bottom or both top and bottom locking bolt

Dummy pulls

- Complementing nonfunctioning handles

Features

- UL Listed
- BHMA Certified—ANSI/BHMA Grade 1, Type 2
- Two-year warranty
- All standard exterior pull combinations available
- Bolt action mechanism hidden within interior of door handle
- Stainless steel and brass, polished or satin finishes available
- Used with 1/2"-3/4" thick tempered safety glass
- Accommodates a wide range of door sizes

DORMA USA, Inc.
Dorma Drive, Drawer AC
Reamstown, PA 17567
800-523-8483
www.dorma.com