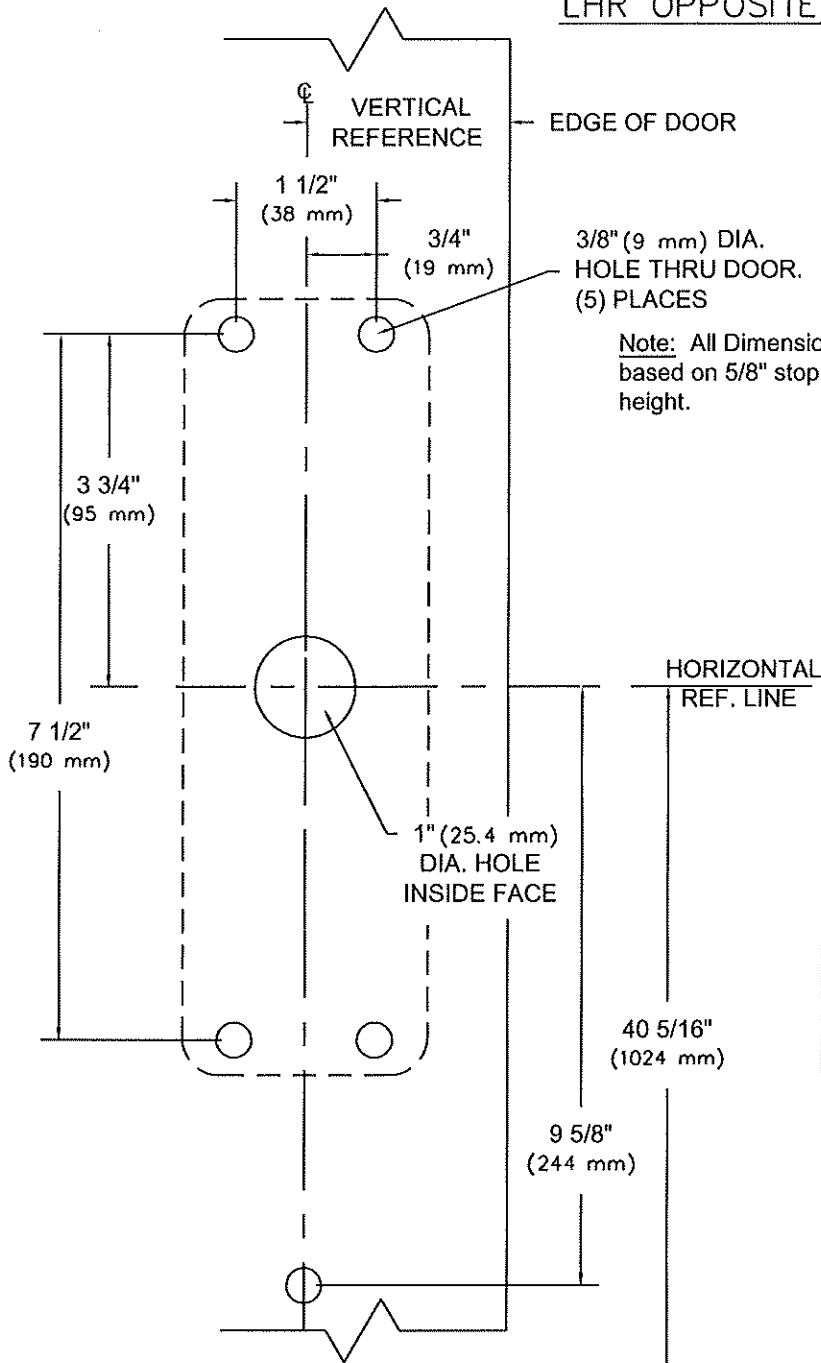
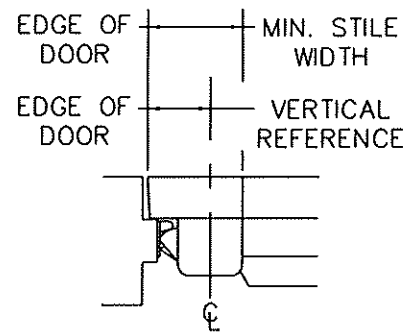


RHR SHOWN
LHR OPPOSITE

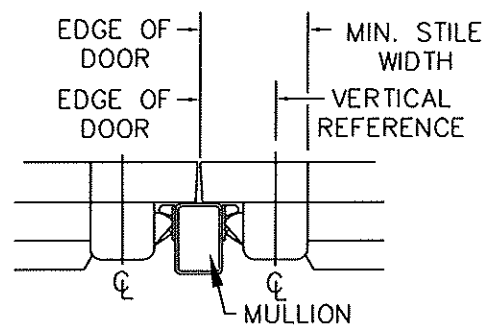


3/8" (9 mm) DIA.
HOLE THRU DOOR.
(5) PLACES

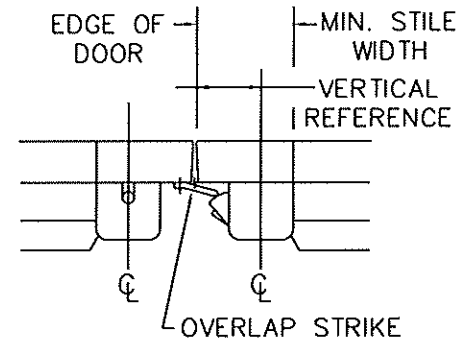
Note: All Dimensions
based on 5/8" stop
height.



STOP	STRIKE	VERT. REF.	MIN. STILE
BLADE (cutout)	430	2 1/16" (52 mm)	3 1/2" (89 mm)
	486	2 13/16" (72 mm)	4 1/4" (108 mm)
	463		



MULLION	STRIKE	VERT. REF.	MIN. STILE
1310	463	2 3/4" (70 mm)	4 3/16" (106 mm)
	486		
1330	ALL	3" (76 mm)	4 7/16" (113 mm)
F1300	ALL	3 1/4" (83 mm)	4 9/16" (116 mm)
1340KR	ALL	3 1/4" (83 mm)	4 9/16" (116 mm)
F1340KR	ALL		



STRIKE	VERT. REF.	MIN. STILE
320	2 1/2" (64 mm)	4" (102 mm)

NOTES: FINISHED FLOOR LINE OR TOP OF THRESHOLD

1. SEE MASTER SHEET #T-0001 FOR SUGGESTED DOOR REINFORCEMENT.
2. SEE ADDITIONAL TRIM TEMPLATE WHEN REQUIRED.
3. DEVICE WILL COVER STANDARD SDI CUTOUT.

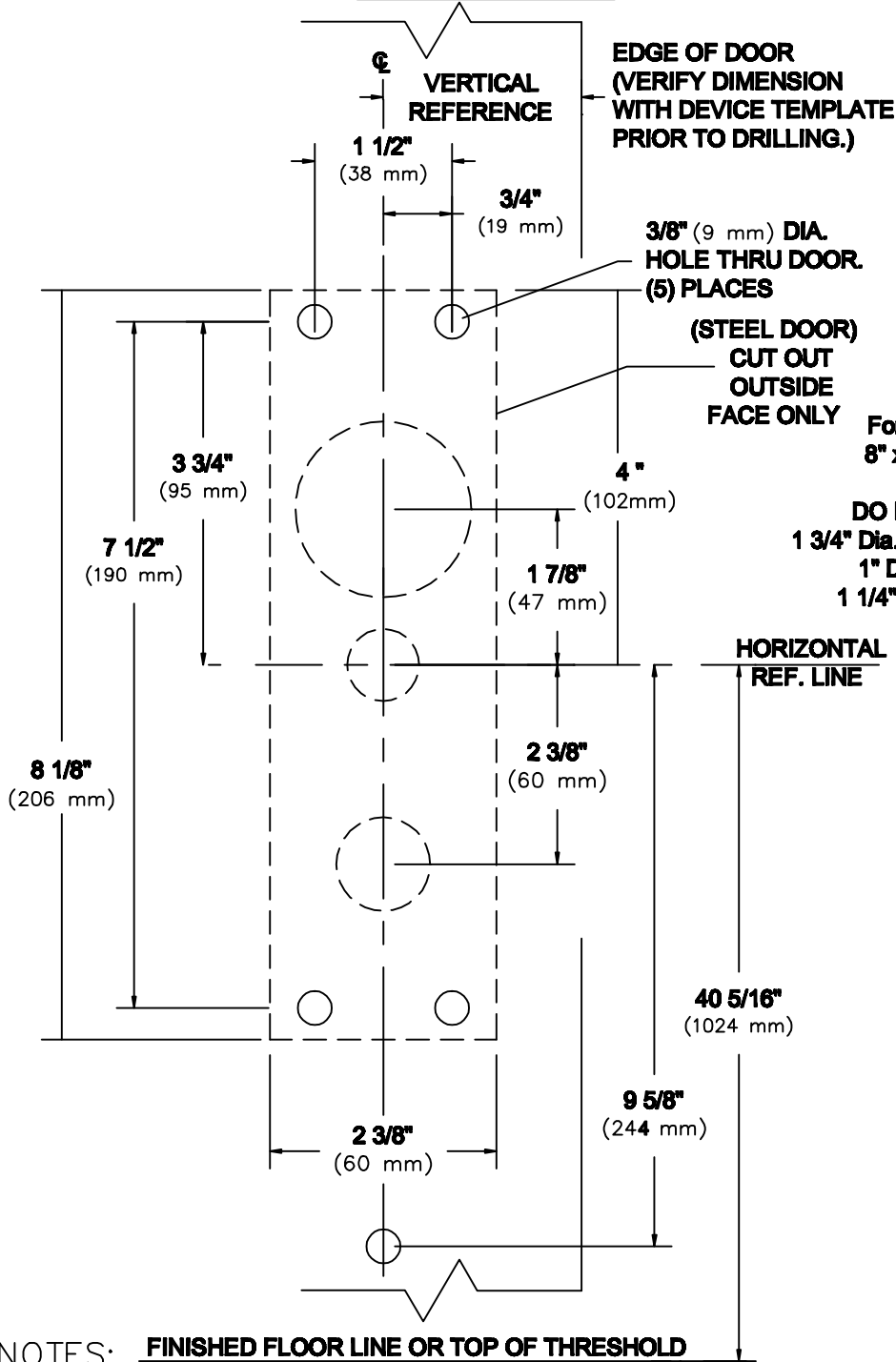
REV. No. 8 REVISION: Update dimension DATE: 10-10-11



9300 & F9300 x HTT22 or HRT22
9300 & F9300 x HTT05/06 or HRT05/06
RIM TYPE EXIT DEVICE

TEMPLATE NUMBER
T-9306⑧

RHR SHOWN
LHR OPPOSITE



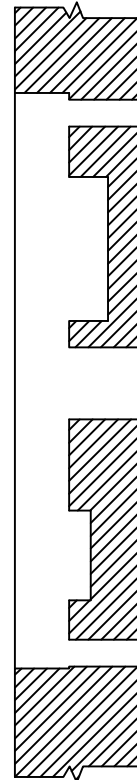
**EDGE OF DOOR
(VERIFY DIMENSION
WITH DEVICE TEMPLATE
PRIOR TO DRILLING.)**

**3/8" (9 mm) DIA.
HOLE THRU DOOR.
(5) PLACES**

**(STEEL DOOR)
CUT OUT
OUTSIDE
FACE ONLY**

**For Wood or Composite Doors;
8" x 2 1/4" x 3/4" Deep Min. Cut
Out. (Outside Face)
DO NOT CUT THROUGH DOOR!
1 3/4" Dia. Min. Hole x 1 1/4" Deep As Shown
1" Dia. Min. Hole Thru As Shown
1 1/4" Dia. Hole x 1" Deep As Shown**

**HORIZONTAL
REF. LINE**



NOTES: FINISHED FLOOR LINE OR TOP OF THRESHOLD

1. SEE MASTER SHEET #T-0001 FOR SUGGESTED DOOR REINFORCEMENT.
2. SEE ADDITIONAL DEVICE TEMPLATE WHEN REQUIRED.
3. TRIM WILL COVER STANDARD SDI CUTOUT.

**NOT TO
SCALE**

REV. No. 6

REVISION: Dimension Correction

DATE: 12-21-09



HTT22 or HRT22
HTT05/06 or HRT05/06
TRIM

TEMPLATE NUMBER
T-9005 ©