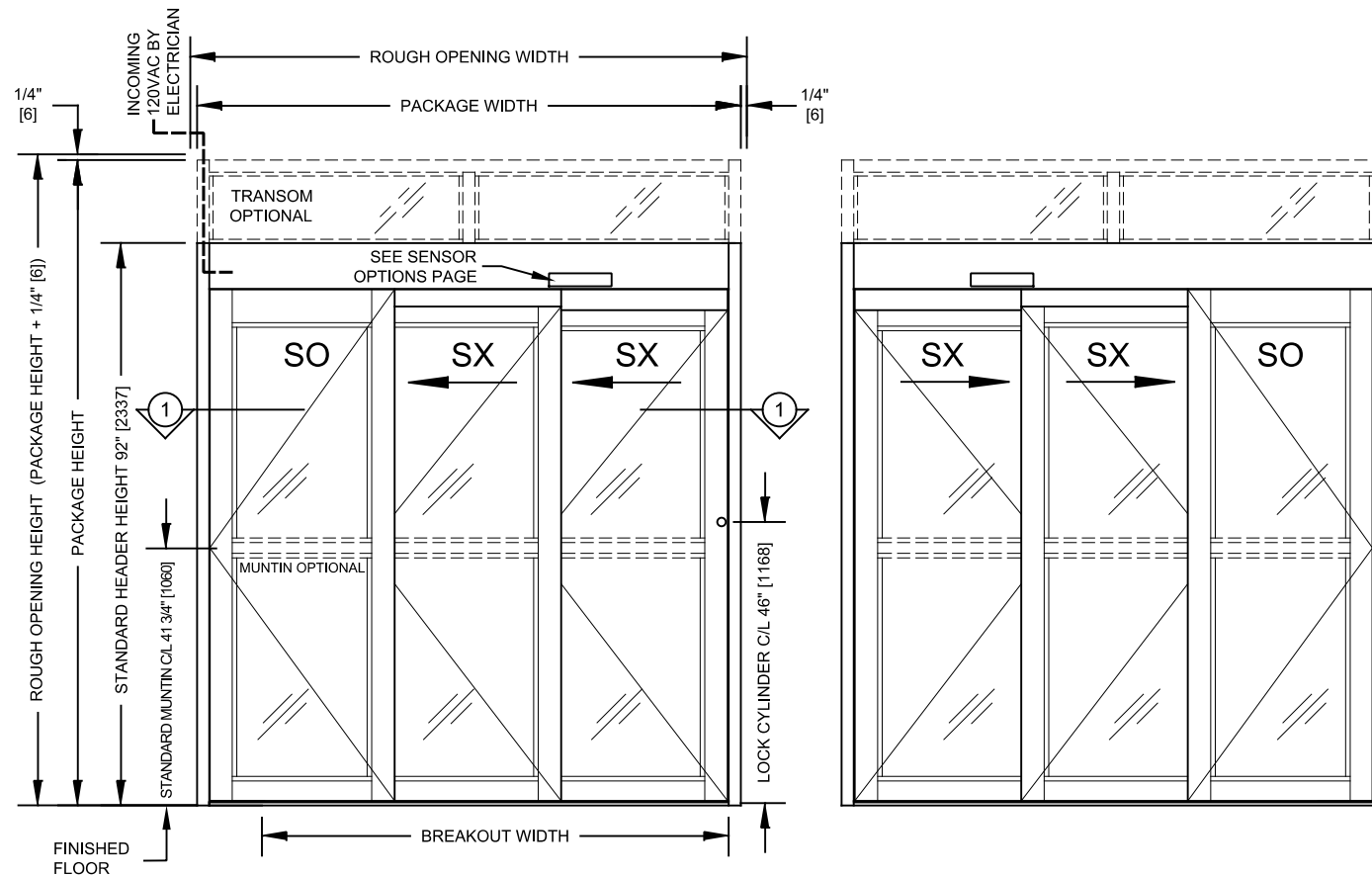
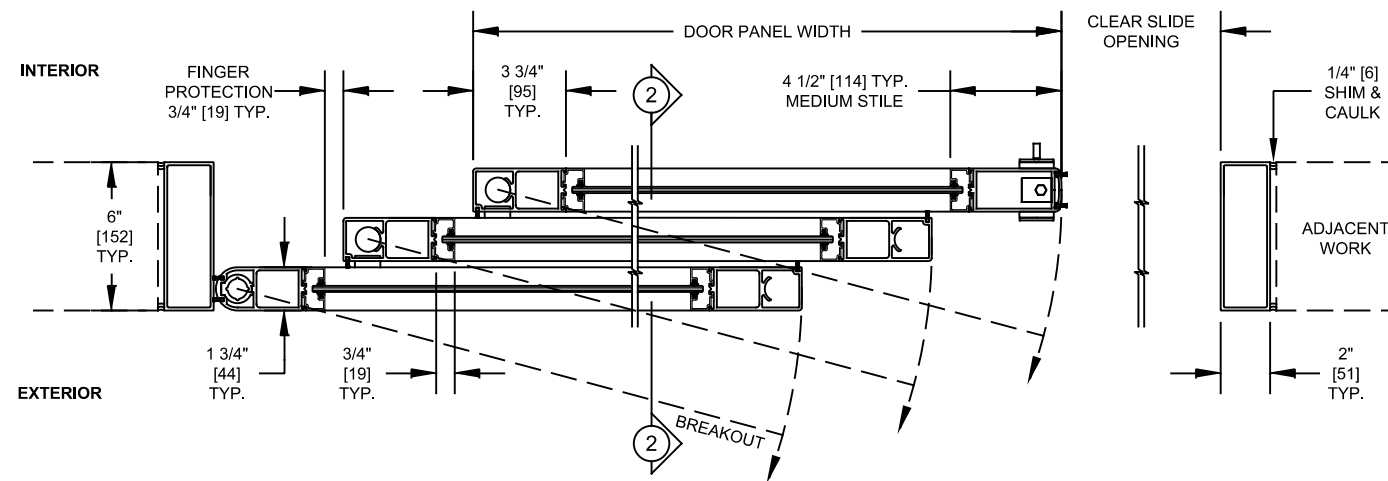


**SECTION 2**  
TYPE: SO-SX-SX, SX-SX-SO



**EXTERIOR ELEVATION**  
TYPE: SO-SX-SX, SX-SX-SO



**SECTION 1**  
TYPE: SO-SX-SX SHOWN, SX-SX-SO OPPOSITE  
DOOR SHOWN IN OPEN POSITION WITHOUT THRESHOLD

Package Width	Rough Opening Width	Clear Slide Opening	Door Panel Width	Breakout Width
(7'-0") 84" [2134]	84 1/2" [2146]	39 5/8" [1006]	29 9/16" [751]	74 1/2" [1892]
(8'-0") 96" [2438]	96 1/2" [2451]	47 5/8" [1210]	33 9/16" [852]	86 1/2" [2197]
(9'-0") 108" [2743]	108 1/2" [2756]	55 5/8" [1413]	37 9/16" [954]	98 1/2" [2502]
(10'-0") 120" [3048]	120 1/2" [3061]	63 5/8" [1616]	41 9/16" [1056]	110 1/2" [2807]
(12'-0") 144" [3658]	144 1/2" [3670]	79 5/8" [2022]	49 9/16" [1259]	134 1/2" [3416]
Width Formulas	(Package Width) + 1/2" [13]	(Package Width x 2/3) - 16 3/8" [416]	(Package Width / 3) + 1 9/16" [40]	(Package Width) - 9 1/2" [241]

- This Single Telescopic door package consists of:
  - Operator:
    - Two combination motion/presence sensors (one on each side) (See sensor options page).
    - ESA II motor drive unit with self-learning and self-monitoring microprocessor controller.
    - Jamb mounted 5 function rocker switch panel (see mode switch options page).
  - Panels:
    - 4-1/2" [114] Medium stile door panels (including 3/4" [19] wide glass stop).
    - 3-1/4" [83] Optional muntin mounted at 41-3/4" [1060] centerline on all panels (including 3/4" [19] wide glass stop).
    - 4" [102] Bottom rails (including 3/4" [19] wide glass stop).
    - 2" [51] x 6" [152] Smooth jambs.
    - Vertical and horizontal brush type weather stripping (AAMA-701-11Class A).
    - Manual two point mortise lock with thumb turn and key cylinder.
    - 3/4" [19] wide snap-in glass stops for glazing from 1/4" [6] to 1-1/4" [32] thick at 1/8" [3] increments.
    - ADA Compliant Surface applied track and threshold 1/2" [13] x 6 5/8" [168].
    - Breakaway sliding door panels (SX) and breakaway sidelights (SO) panels.
    - Limit arm on SX and SO Panels.
    - Breakout sensors in SO panels.
  - Finishes:
    - Clear anodized (BHMA 204).
    - Dark Bronze anodized (BHMA 313).
- Optional Transom:
  - Single vertical 2" [51] x 6" [152] smooth mullion (Standard). Multiple verticals available.
  - Glass thickness options 1/4" [6] thru 1-1/4" [32] at 1/8" [3] increments.
  - Snap-in sash on all sides.
- Typical Package Options:
  - Finishes: special anodized, PVDF (wet) paint, powder coat, and cladding available. header, panels and jambs only.
  - Muntins: multiple, various heights, locations and recessed exit device.
  - Bottom Rails: 7" [178], 10" [254]. Other heights available.
  - Santoprene rubber weather stripping available.
  - Locking and Security Options:
    - Bi-stable autolock sliding carrier lock concealed in header.
    - 3-point lock and reinforced strike.
    - Security contacts.
    - Keyed mode switch panel (5 function or 3 function) (see mode switch options page).
    - Recessed exit device in 5 1/2" [140] in SX muntin.
    - Surface applied 8600 exit device.
  - Recessed or 3-piece surfaced applied threshold available.
- Drawing Notes:
  - Drawing dimensions are in English & Metric units. Metric units are displayed as: 1" [25] millimeters.
  - Typical package dimensions: (Glass thickness may be limited by panel size)
    - Each door package is manufactured to your custom size requirements.
    - Package Width: Min. 7' [2134] to Max. 12' [3658].
    - Header Height: Min. 7'-5 1/8" Max. 10' [2234].
    - Package Height: Max. 12' [3658] with Transom.
    - SX Panel Weight: Max. Weight 200 lbs [90kg].
  - Maximum special application limits / custom packages: (Sizes may be restricted due to complexity and application) (Please contact dormakaba Architectural Services for dimensions **outside of typical sizes above**)
    - Package Width: Min. 6'-6" [1981] to Max. 13'-6" [4115].
    - Package Height: Max. 14' [4267].
    - Header Height: Max. 12' [3658].
    - Transom Height: Min. 8" [203] to Max. 2' [610].
    - SX Panel Width: Max. Width 56" [1422].
    - SO Panel Width: Max. Width 60" [1524].
    - SO Panel Weight: Max. 250 lbs [113 kg].
    - SX Panel Size Limit = (SX Panel Width x Weight) < 800 ft-lbs [1084 N-m] Max.
- Power Requirements:
  - 120V +/- 10%, 50/60 Hz, 6.6A peak, 250 W. Up to 4 operators on a single 20A breaker. Service to header by electrician.
- Standards of Compliance:
  - UL 325 & CSA 22.2 (listed with ETL).
  - Designed to comply with these standards depending on installation and application:
    - International Building Code (Section 1008).
    - ANSI/ BHMA 156.10.
    - ANSI/ BHMA 156.38.
    - NFPA 101 Life Safety Code (Section 7.2.1.9).
  - Refer to Local, State, National or AHJ. Building Code for minimum door height and minimum/maximum width allowable for egress requirements.
  - Minimum ADA is 32" clear slide opening.
- Contact dormakaba Architectural Services for more information:
  - Phone: 1-844-SPEC-NOW (1-844-773-2669)