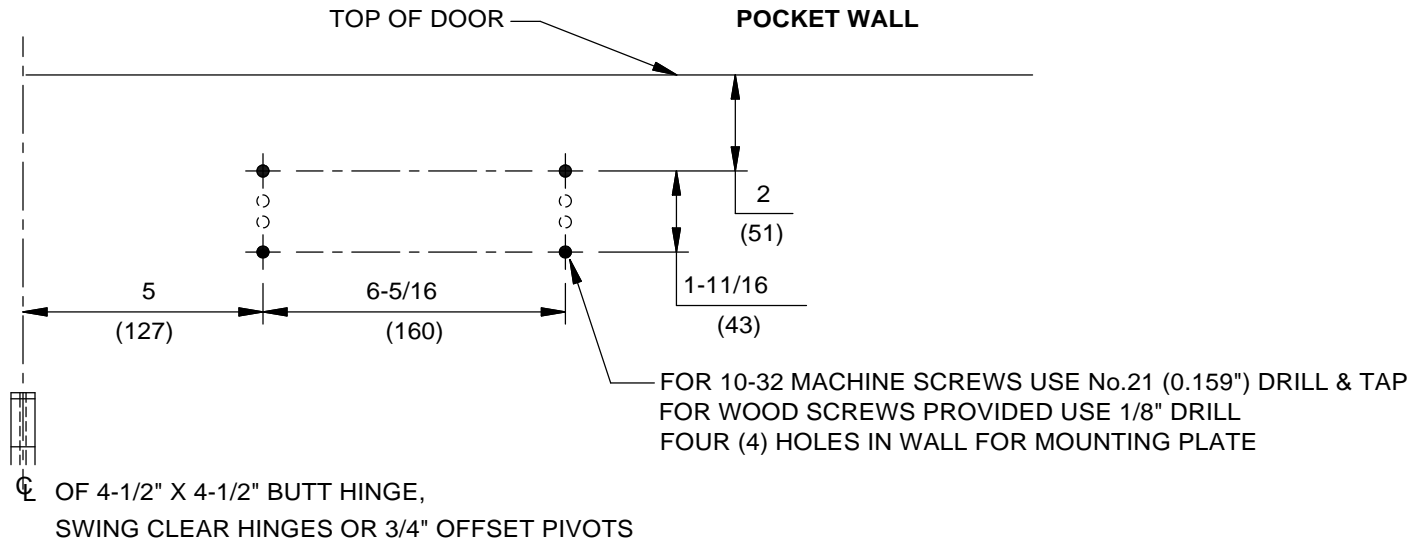


NOTES:

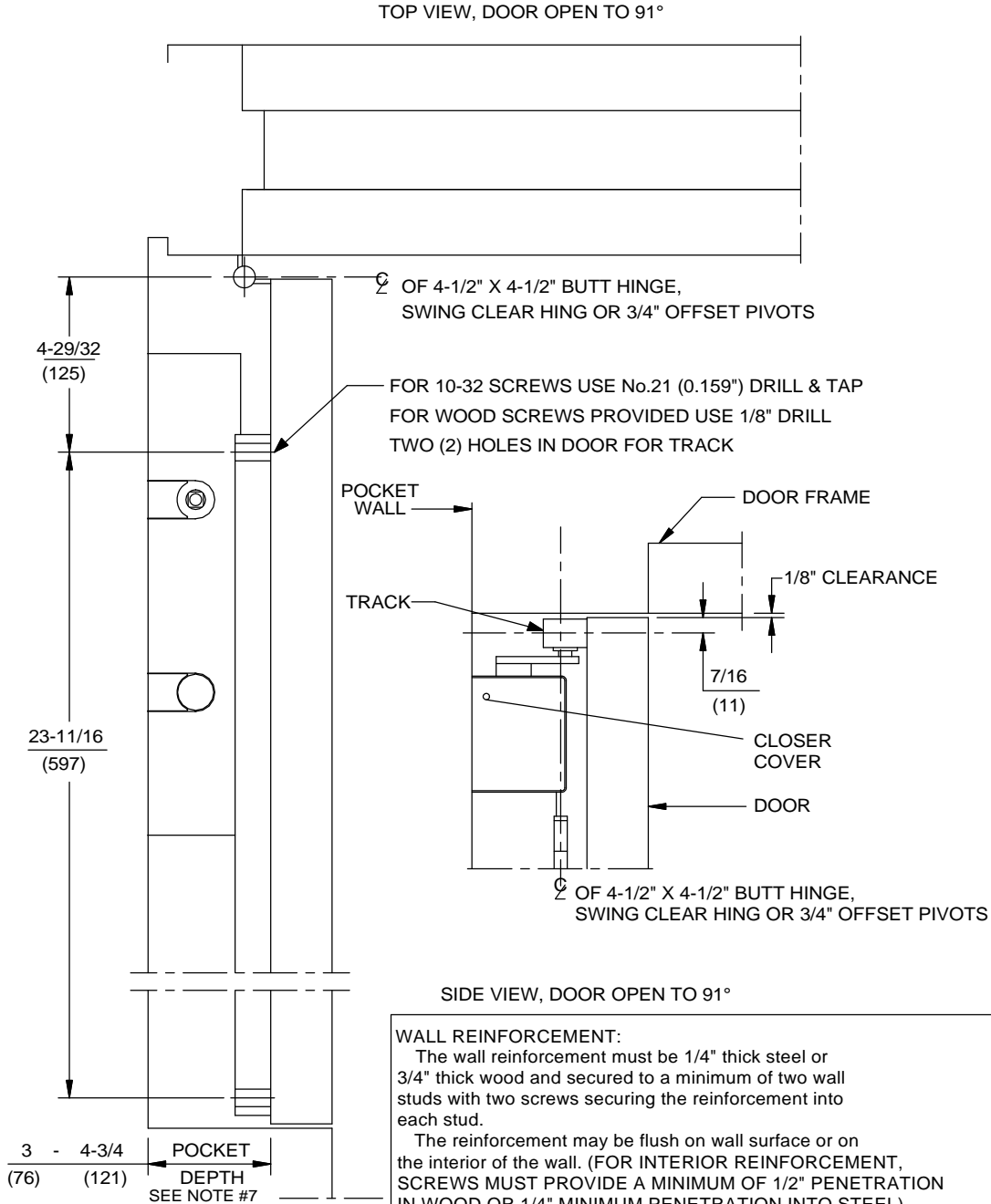
1. DO NOT SCALE DRAWING.
2. DIMENSIONS ARE IN INCHES/(MM).
3. LEFT HAND DOOR SHOWN.
4. CAUTION: SEX NUTS ARE REQUIRED FOR ATTACHMENT OF COMPONENTS TO UNREINFORCED DOORS AND TO WOOD OR PLASTIC FACED COMPOSITE TYPE FIRE DOORS, UNLESS AN ALTERNATIVE METHOD IS IDENTIFIED IN THE INDIVIDUAL DOOR MANUFACTURER'S LISTINGS.
5. ADJUST CLOSER SPRING TENSION FOR PROPER CLOSING AND LATCHING OF DOOR.
6. ADEQUATE REINFORCEMENT BY OTHERS REQUIRED TO INSTALL CLOSER IN POCKET.
7. POCKET DEPTH IS MEASURED FROM PULL SIDE FACE OF DOOR AT MAXIMUM OPENING.
8. MAXIMUM OPENING IS 90° TO 119° DEPENDING ON DOOR HANGING MEANS.



DOOR CLOSER MODELS: TS93-5 PKT 90/119
 90° POCKET DOOR INSTALLATION (PULL SIDE MOUNT)
 CLOSER SURFACE APPLIED TO POCKET WALL



DORMA Architectural Hardware
 Reamstown, PA 17567



WALL REINFORCEMENT:

The wall reinforcement must be 1/4" thick steel or 3/4" thick wood and secured to a minimum of two wall studs with two screws securing the reinforcement into each stud.

The reinforcement may be flush on wall surface or on the interior of the wall. (FOR INTERIOR REINFORCEMENT, SCREWS MUST PROVIDE A MINIMUM OF 1/2" PENETRATION IN WOOD OR 1/4" MINIMUM PENETRATION INTO STEEL).

For a masonry wall, the reinforcement may be secured to the wall with four screws (ONE IN EACH CORNER) in lead anchors placed in the wall.

NOTE: IF REINFORCEMENT IS ON THE INTERIOR OF THE WALL LONGER SCREWS MAY BE REQUIRED FOR PROPER SCREW PENETRATION.

