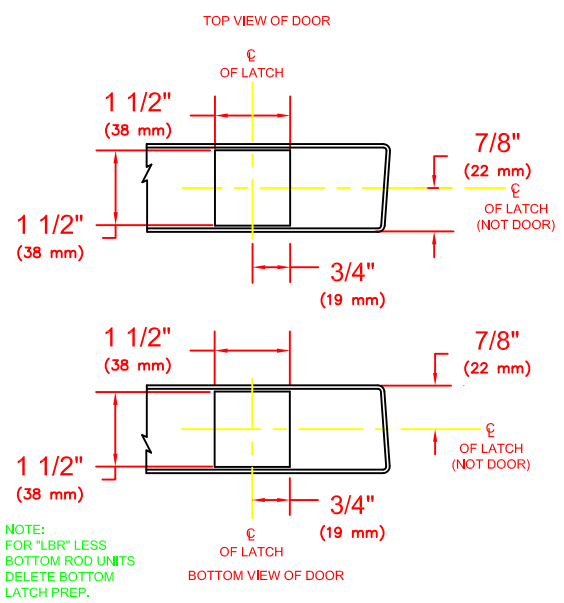
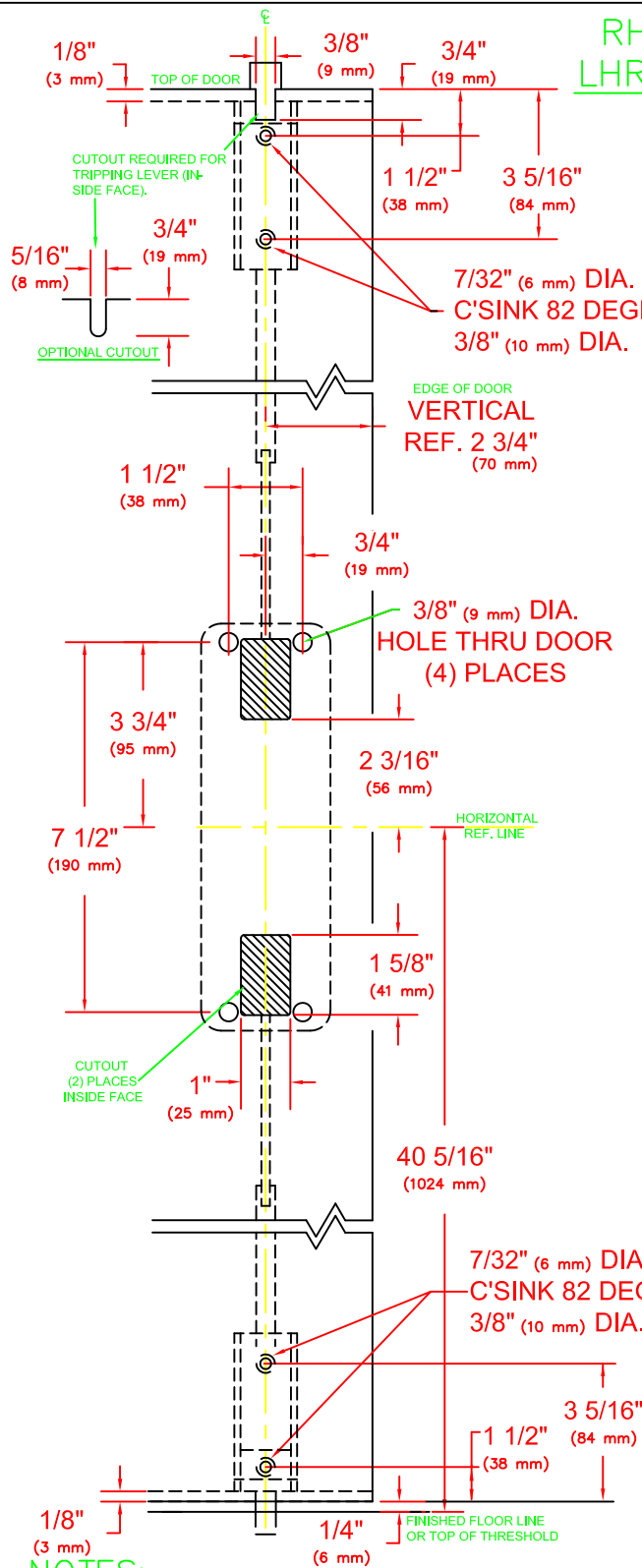
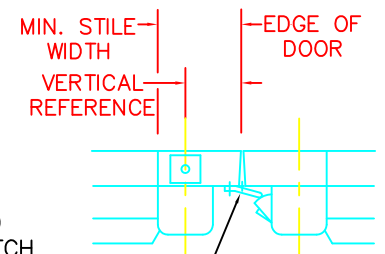
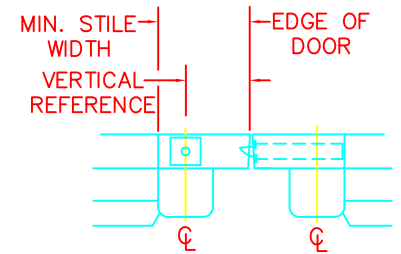
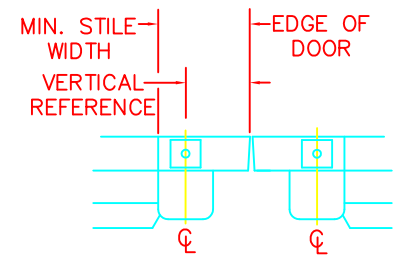


RHR SHOWN
LHR OPPOSITE



NOTE:
FOR "LBR" LESS
BOTTOM ROD UNITS
DELETE BOTTOM
LATCH PREP.



FOR 9300 SERIES
MOUNTING LOCATION
SEE APPROPRIATE
9300 TEMPLATES.

FOR LESS BOTTOM ROD (LBR)
DEVICES, DELETE BOTTOM LATCH
PREP. POPPER REQUIRED ON FIRE
RATED DEVICE, SEE TEMPLATE
T-4012.

| VERTICAL REFERENCE | MINIMUM STILE WIDTH |
|--------------------|---------------------|
| 2 3/4" (70 mm) | 4 3/16" (106 mm) |

NOTES:

1. SEE MASTER SHEET #T-0001 FOR SUGGESTED DOOR REINFORCEMENT.
2. SEE ADDITIONAL TRIM TEMPLATE WHEN REQUIRED.
3. DEVICE WILL COVER STANDARD SDI CUTOUT.

REV. No. 4

REVISION: Lever Style Notes

DATE: 1-24-14

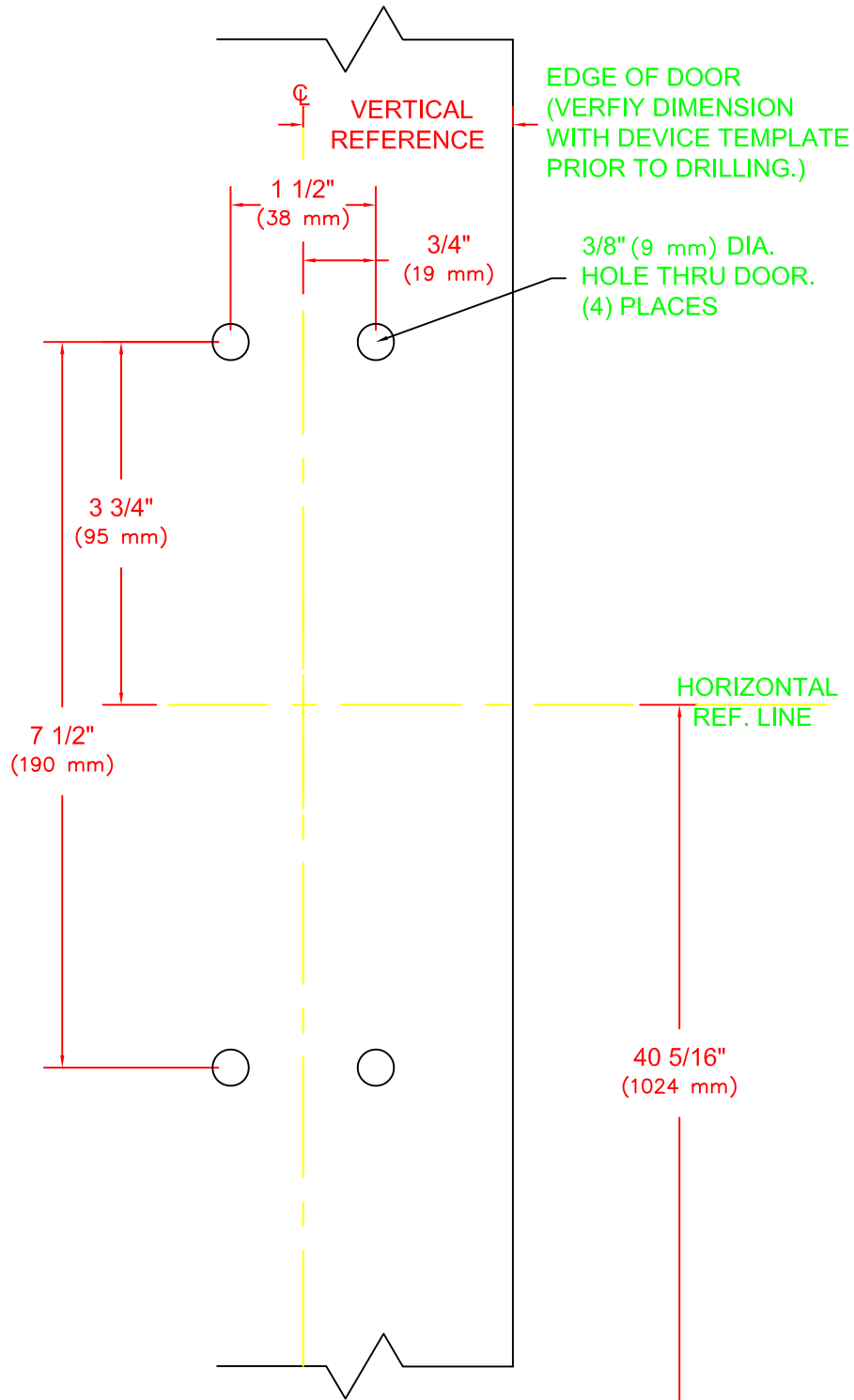


9100 & F9100 x YODT, Y*02R
Note * Denotes all Lever Design Styles
VERTICAL ROD EXIT DEVICE
(Aluminum Door)
(For Use With Optional ALD Brackets)

TEMPLATE NUMBER
T-9129AL

4

RHR SHOWN
LHR OPPOSITE



NOTES:

1. SEE MASTER SHEET FINISHED FLOOR LINE OR TOP OF THRESHOLD
- #T-0001 FOR SUGGESTED DOOR REINFORCEMENT.
2. SEE ADDITIONAL DEVICE TEMPLATE WHEN REQUIRED.
3. TRIM WILL COVER STANDARD SDI CUTOUT.

| | | |
|------------|-----------------------------|---------------|
| REV. No. 3 | REVISION: Lever Style Notes | DATE: 1-16-14 |
|------------|-----------------------------|---------------|



YODT, Y*02R

Note; * Denotes all Lever Design Styles

TEMPLATE NUMBER
T-9000 ③