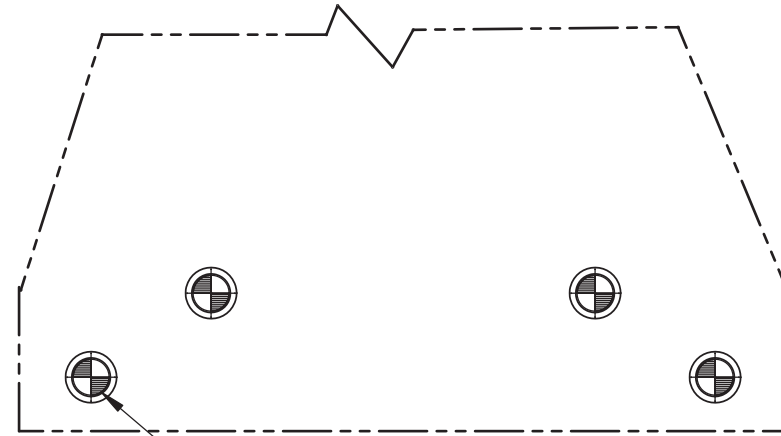
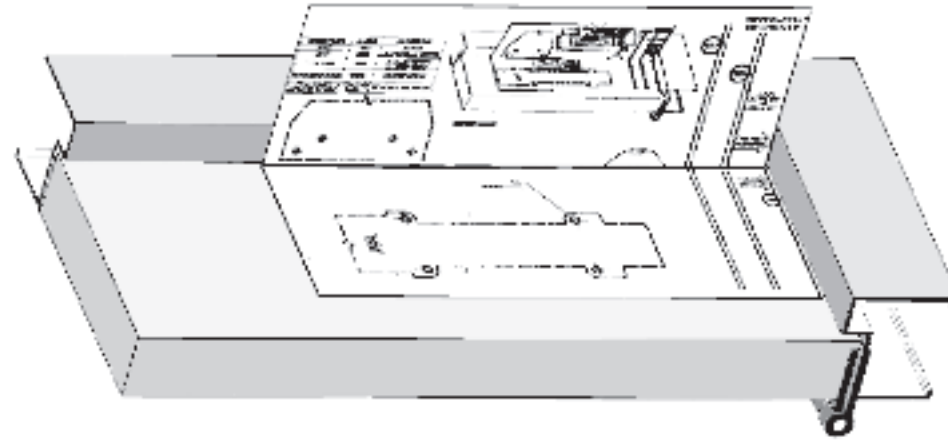


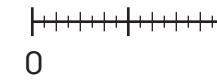
# 8900

## DS right hand parallel mount

Drilling Template [FULL SIZE]



VERIFY EXACTLY  
1" [25.4].

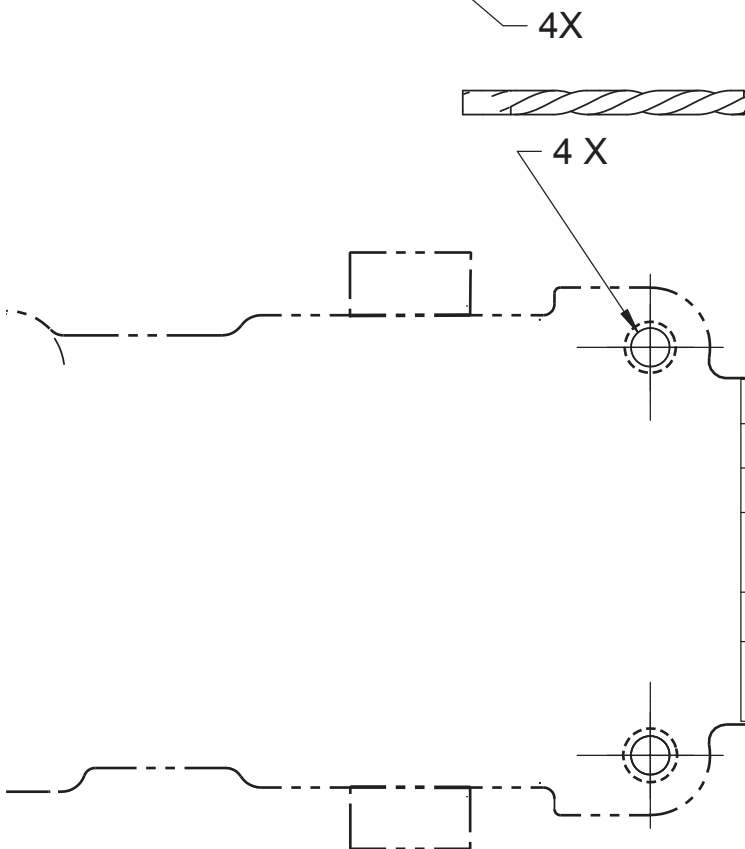
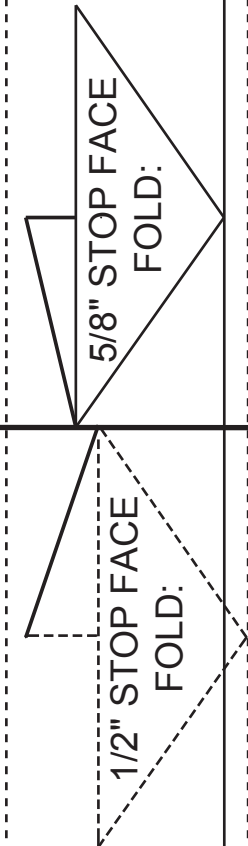


MEASURE SCALE  
AFTER PRINTING.

TEMPLATE TO SCALE 1:1,  
FULL SIZE

CHOOSE MAX DOOR OPENING

110° 100° 90° 85°



FASTENER	DRILL	MATERIAL
TPK	7/32	STEEL/ALUMINUM
DPK	1/8"	STEEL ONLY
SEX NUT	3/8"	WOOD /STEEL/ COMPOSITE
WOOD SCREW	5/32"	HARD WOOD
1/4-20 UNC MACH SCREW	#7 (.201), 13/64"	STEEL/ALUMINUM

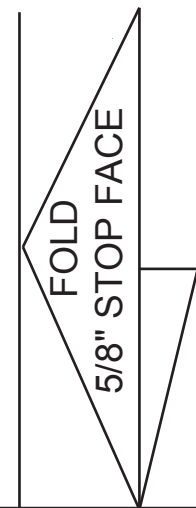
# 8900

## DS right hand parallel mount

Drilling Template [FULL SIZE]

CHOOSE MAX DOOR OPENING

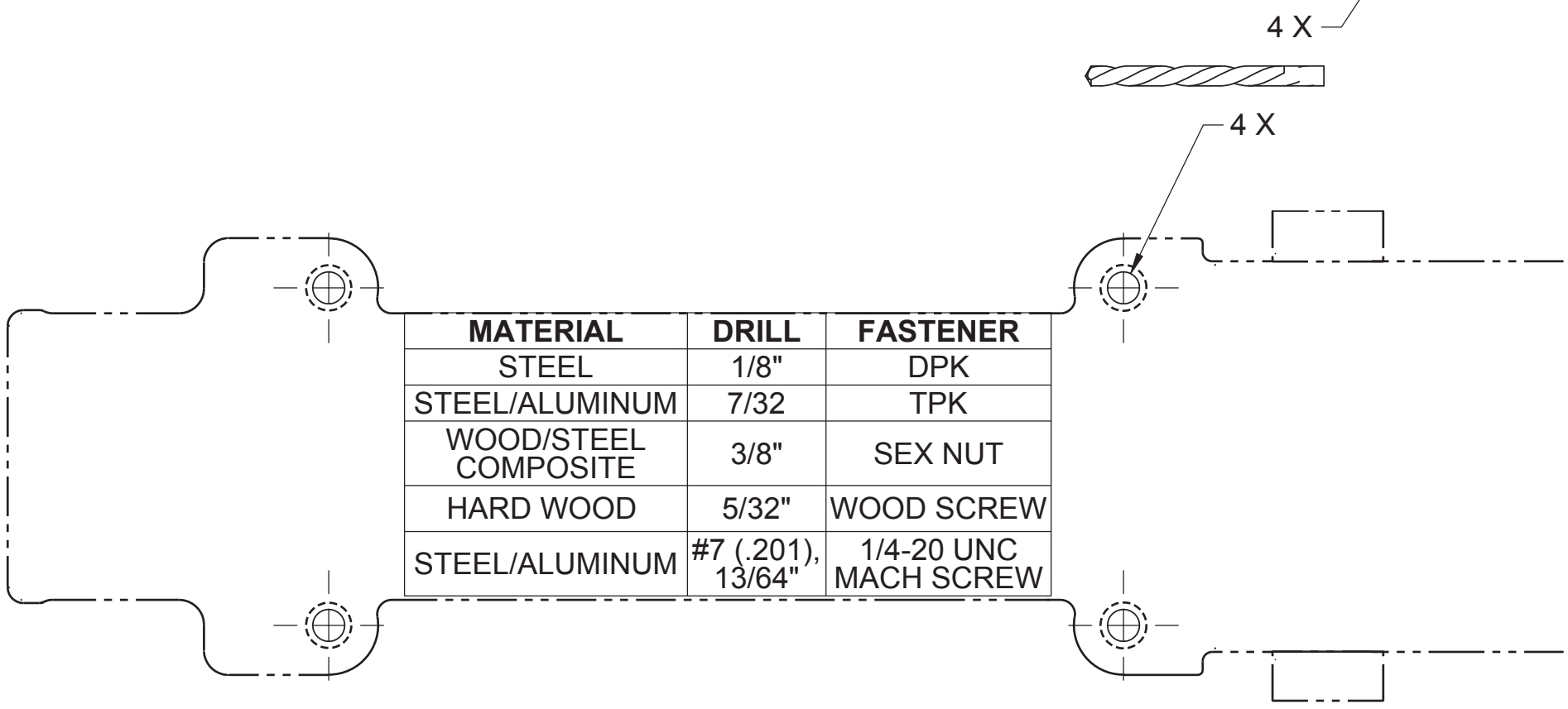
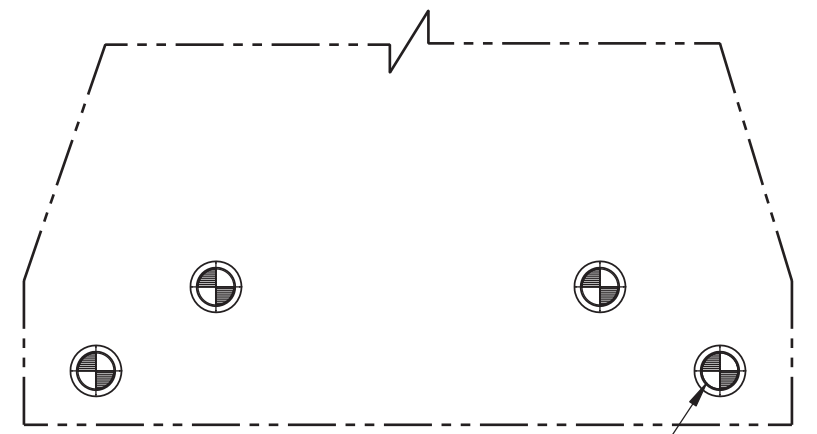
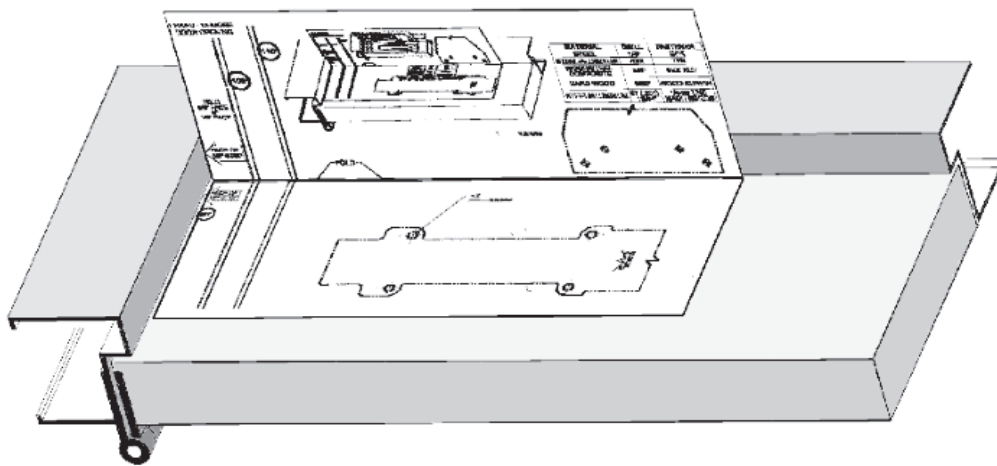
85° 90° 100° 110°



VERIFY EXACTLY  
1" [25.4].



MEASURE SCALE  
AFTER PRINTING.  
TEMPLATE TO SCALE 1:1,  
FULL SIZE



MATERIAL	DRILL	FASTENER
STEEL	1/8"	DPK
STEEL/ALUMINUM	7/32	TPK
WOOD/STEEL COMPOSITE	3/8"	SEX NUT
HARD WOOD	5/32"	WOOD SCREW
STEEL/ALUMINUM	#7 (.201), 13/64"	1/4-20 UNC MACH SCREW