

Furniture Cylinders

MZ.1033



Application:

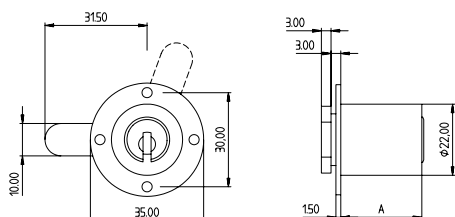
Lock cylinders for furniture doors, left and right hinged and drawers. The key cannot be removed from the cylinder when open.

Specification:

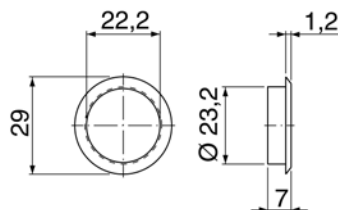
Housing supplied in solid natural brass with nickel plating
 Reversible key made from nickel silver
 Round fixing plate type BS 5A zinc coated steel
 Cam shape M6 zinc-coated steel

Included with the cylinder:

2 reversible keys (See "Special Functions and Keys" for key options)
 Plastic key clip in dark red for Kaba penta, in dark blue for all other systems
 Security Card for ownership registration and ordering duplicate keys
 Installation and Maintenance Instructions



A = Cylinder length in mm
 Configuration displayed for right door



Rosette 1008A

Premier Systems:	6 Kaba penta	7 Kaba quattro plus	12 Kaba gemini plus
Patent expired systems	4 Kaba quattro S	2 Kaba gemini S	
Old systems	3 Kaba quattro ¹⁾	1 Kaba gemini ¹⁾	
Dealer systems	5 Kaba expert ²⁾	19 Kaba maTriX ²⁾	
Old dealer system		9 Kaba gemini T ²⁾	

Lengths Standard - from 25 to 75 mm in 5 mm steps
 60 and 70mm available on request only

Options (See „Special Functions and Keys“ for details)

BAZ	Construction key	BAZ3	Construction key 3
RE	Right hinged door	LE	Left hinged door
OB	Top hinged door	UN	Bottom hinged door

Accessories

Order Code	Drawing No.	Description
ROSETTE.1008A.*	1008A-25	Slide on rosette for furniture cylinder Ø 22 mm, available in all surface finishes (* specify surface finish code at the end of the order code)

Standard Surface Finishes

NI - Nickel plated	MS - Brass natural	
--------------------	--------------------	--

Optional Surface Finishes

BH - brown light	MP - Brass polished	CR - Chrome standard
BM - brown medium	MSA - Brass antique	CRM - Chrom dull
BD - brown dark		CRP - Chrome polished
NIC - chemically nickel plated		
GO - gold plated		

Order Code System

System Code.Cylinder.Type.Length.Surface finish.hinge position.Option

Example:

6.MZ.1033.NI.LI = penta.furniture cylinder.1033.nickel plated.left hinged door

Please note that certain options, finishes and dimensions may be subject to extended factory lead times. Please contact our office via email on sales.uk@kaba.com or telephone (0) 870 000 5625.

¹⁾ Kaba gemini and Kaba quattro are only offered for existing master key systems.

²⁾ Kaba expert, Kaba maTriX and Kaba gemini T are only sold to authorized dealers.