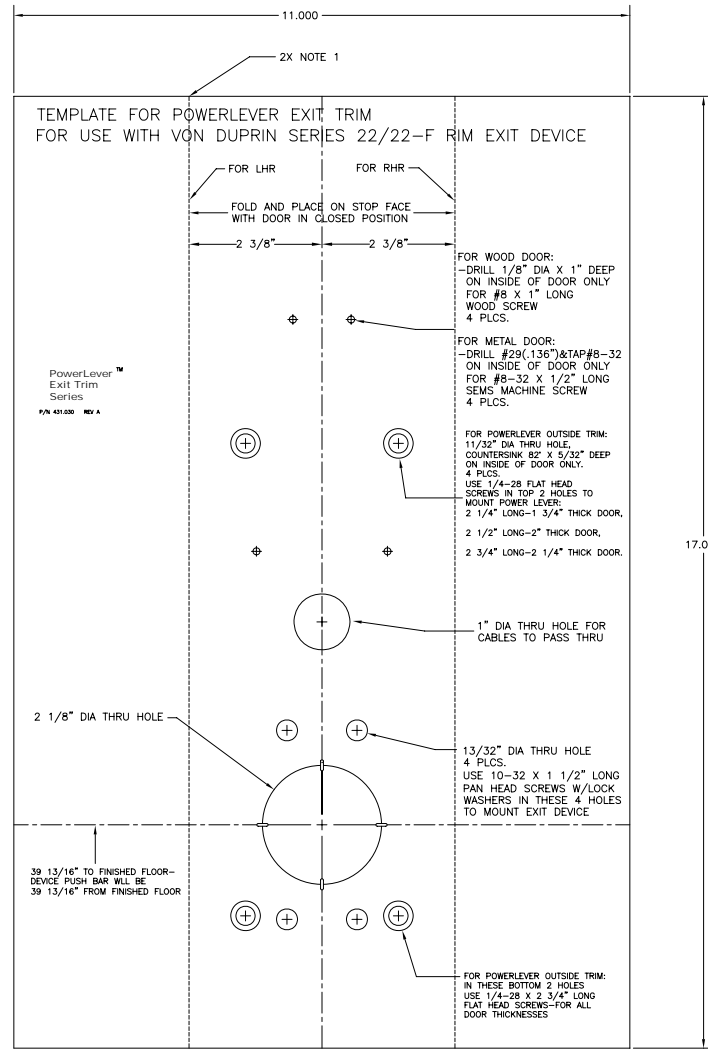


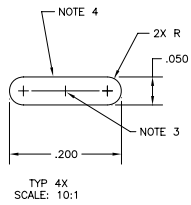
LIMITED RIGHTS IN DATA
 THIS DOCUMENT CONTAINS PROPRIETARY AND TRADE
 SECRET DATA OF THE MILITARY GROUP.
 IT IS NOT TO BE USED, REPRODUCED OR RELEASED IN
 WHOLE OR IN PART FOR ANY PURPOSE OTHER THAN
 THAT AUTHORIZED BY THE MILITARY GROUP.
 AUTHORIZATION MUST BE IN WRITING.

REV.	ECO #	REV. BY	CHKD BY	DATE
A	0763			01SEP00
B	0784	KCS	JEP	23FEB01

- NOTES
- 1) PERFORATE ALONG DASHED LINE TO AID FOLDING, APPROXIMATELY 10 PERFORATIONS PER INCH. PERFORATIONS TO BE WITHIN .005 OF PRINTED DASHED LINE.
 - 2) BLACK INK ON WHITE PAPER
 - 3) TO BE CENTERED ON 2 1/8" DIA AT THE 4 POINTS ON CIRCUMFERENCE AS SHOWN
 - 4) PERIMETER TO BE PERFORATED SO CAN PUNCH OUT
 - 5) TOLERANCES TO BE ±.005 UNLESS OTHERWISE SPECIFIED
 - 6) ALL TEXT AND DIMENSIONS SHOWN WITHIN THE 11 X 17 OUTLINE IS TO BE PRINTED



REFERENCE ONLY, NOT TO SCALE
DO NOT USE AS A DRILLING TEMPLATE
CALL 800-849-8324



REF. ASME Y14.5M-1994

M&H-HARTINGTON		808-D NEWTOWN CIRCLE	
LEXINGTON, KY 40511-1240		LEXINGTON, KY 40511-1240	
PHONE 606-855-6744		PHONE 606-855-6744	
TITLE	DR.	CHK.	DATE
TEMPLATE, PL EXIT TRIM, VD 22	JEP	JEP	28MAR00
MATERIAL	DR.	CHK.	DATE
70 LB WHITE PAPER	JEP	JEP	
SCALE	SHEET	SIZE	PT. NO.
1:1	1 OF 1	D	4.31.030
			REV
			B