

RCI Touch 2 Touchless module

Quick and simple touch to touchless conversion



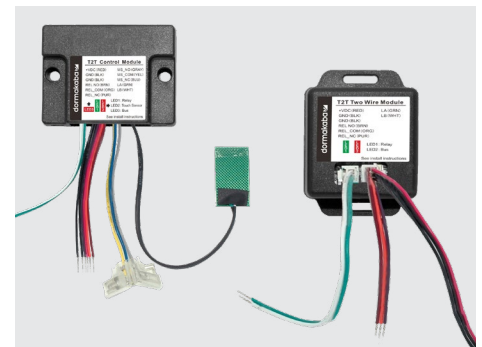
Features and benefits

- Converts RCI 946/950 models into touch-free actuators
- Can convert all other push plate actuators (with no added features or secondary attributes already in use)
- Easy to install and operates in minutes
- No added wire runs
- Comes with alternate plates to adhere to actuator indicating the new touch-free feature

The RCI Retrofit Contactless Module (RCM) is an innovative and affordable module designed to convert any standard wired push plate actuator, with no secondary attributes, to become a wireless touch-to-touchless (T2T) actuator.

Simply install the RCM module to the operator and/or push-plate actuator to instantly convert it to a touchless door actuator.

Upgrading standard automatic door actuators to touchless switches has never been easier. Past touchless switches have required costly added wire runs. The RCI T2T conversion module makes switching from touch-to-touch free conversion simple and inexpensive!



Specifications

RCM Retrofit contactless module



Two-wire module



Module	RCM Retrofit contactless module	Two-wire module
Operating voltage	DC 12 -24	DC 12 -24
Operating current	200mA @ 12VDC (max)	200mA @ 12VDC (max)
Operating temperature	14° - 140° (-10° – 60° C)	14° - 140° (-10° – 60° C)
Trigger range	50-100mm	< 200mm
Relay output	Dry contact, 30VDC with 1A (max)	Dry contact, 30VDC with 1A (max)
Dimensions	2.3" x 1.75" x 0.78" (60 x 45 x 20 mm)	2.5" x 2" x 0.75" (65 x 51 x 19 mm)
Environment	Interior/exterior use	Interior/exterior use

Applications



Functions with RCI 946/950 models and ALL other push-plate actuators with no other added features or secondary attributes.



Comes with new display plates to indicate the touch-free feature

Part number	Description
T2T-4-WO	4 Wire application - Hand logo wave to open
T2T-4-HC-WO	4 Wire application - Handicap logo wave to open
T2T-2-WO	2 Wire application - Hand logo wave to open
T2T-2-HC-WO	2 Wire application - Handicap logo wave to open
T2T-4-WL	4 Wire application - Hand logo wave to lock
T2T-4-HC-WL	4 Wire application - Handicap logo wave to lock
T2T-2-WL	2 Wire application - Hand logo wave to lock
T2T-2-HC-WL	2 Wire application - Handicap logo wave to lock

© dormakaba 2024 dormakaba Canada Inc. Information on this sheet is intended for general use only. dormakaba reserves the right to alter designs and specifications without notice or obligation.

Any questions? We would be happy to advise you.

Contact us at: 1-800-265-6630