



Electronic door furniture with a smart add-on: The dormakaba c-lever pro with s-module

Do you manage remote buildings with access points that are hard to reach or rarely visited? Would you like to assign access rights for these buildings centrally and from anywhere? The electronic door furniture c-lever pro offers an optional external power supply and with it, remote door opening, so that you can easily control and maintain your door.

The c-lever pro is ideal for outdoor areas, It fulfills high requirements in terms of robustness, weather resistance and safety.

The c-lever pro is battery-operated. Optionally, it can be connected to an external power supply using the s-module. With this, there is no need for regular battery changes, so it simplifies maintenance. You also can control the door remotely, releasing or locking it from wherever you are.

Whether you prefer an access card, key fob, key with RFID or a mobile phone – you choose the access medium that best suits your needs. With the optional Mobile Access function, you can even send digital keys to your users' mobile phones.

The c-lever pro with s-module can also be realised with the convenient TouchGo function, a sort of smart entry system. The door recognises the valid access medium in your pocket and releases the door, you don't need to present any card or key.

Areas of application

Use the c-lever pro with the s-module to centrally manage rarely encountered and remote premises



Areas of application

- 01** Electricity and water supply
- 02** Clinics and hospitals
- 03** Apartments and multi-family houses

01 – Electricity and water supply

In the power and water supply sector, there are many maintenance facilities and buildings in remote locations that are rarely or irregularly accessed. In these cases, it is best to use the external power supply instead of the battery-operation for the door furniture – so that access is ensured at all times.

You benefit from the functionality of an electronic access control system, assigning access rights wirelessly and limiting access to certain areas and times. Access rights are traceable, and you can conveniently send digital keys to mobile phones.



02 – Clinics and hospitals

In clinics and hospitals, the focus lies on the health and well-being of patients. Highly frequented doors are in use, that are opened and closed many dozen times a day – often under a lot of time pressure. The c-lever pro with its s-module can support the process, because there is no need to worry about empty batteries or unexpected maintenance work. This significantly reduces personnel expenses and working hours.

And since the s-module has a connection that can be configured as needed, doors can be released either automatically or manually in case of an emergency.



03 – Apartments and multi-family houses

Main entrances in residential apartments are highly frequented access points, and are often operated using an intercom system. Here, you can use the s-module to connect to the power supply and avoid battery changes. The opening system of the intercom system lets you release the central entrance door for visitors from your apartment just by pressing a button.

If a key is lost, the landlord can easily issue a new access medium and delete the old key in the system without having to replace locks.

Your benefits at a glance:

Enjoy the following advantages with the c-lever pro

Benefits:

- Thanks to the external power supply, you are independent from the number of door opening cycles.
- Simplified maintenance because there is no need to replace batteries.
- Your door can be controlled remotely. This allows you to initiate release and locking, for instance, by using a push button. It also can interact with various systems, such as fire detection or alarm systems.
- You enjoy the benefits of an electronic access system, assigning access rights for specific doors, rooms and times, simply by mouse click.
- With the optional Mobile Access function, you can send digital keys to mobile phones, so that your users can enter the building without the need for a physical hand-over of keys – Find out more [here](#).
- The optional TouchGo function, the c-lever pro recognises valid transponders and releases the door – find out more about TouchGo [here](#).
- Thanks to our large selection of seamlessly combinable door components, such as the digital cylinder, the c-lever compact and our range of readers, you can find a solution for virtually any door.



c-lever pro

Further integrable dormakaba door components:



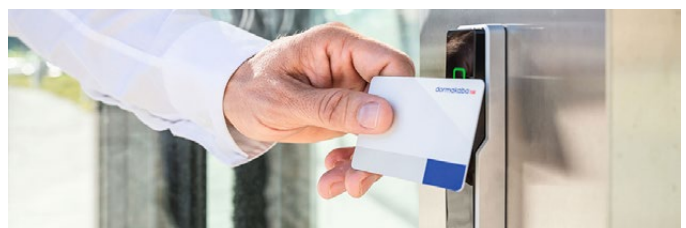
digital cylinder



c-lever compact



c-lever



reader

The solution in detail

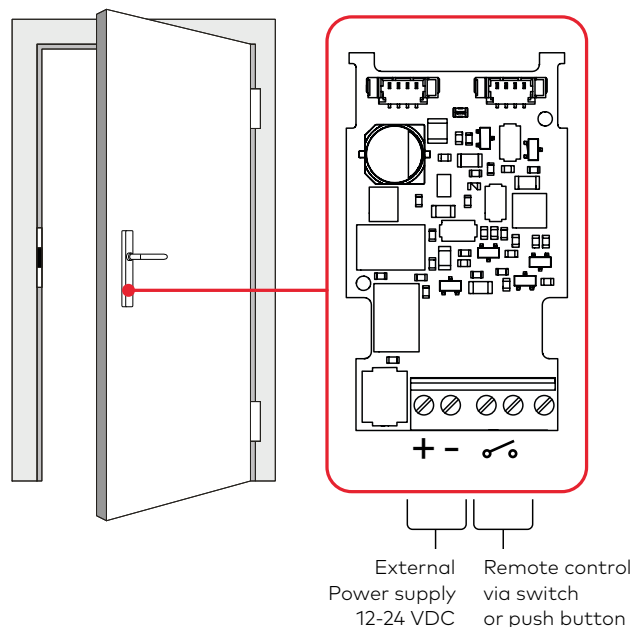
External power supply with the retrofittable s-module.

The s-module is available as an option when ordering the c-lever pro. It can be installed either as a printed circuit board instead of the battery compartment on the inside, or integrated in addition to the battery compartment. In the latter case, you will have to do without the interior cylinder due to lack of space.

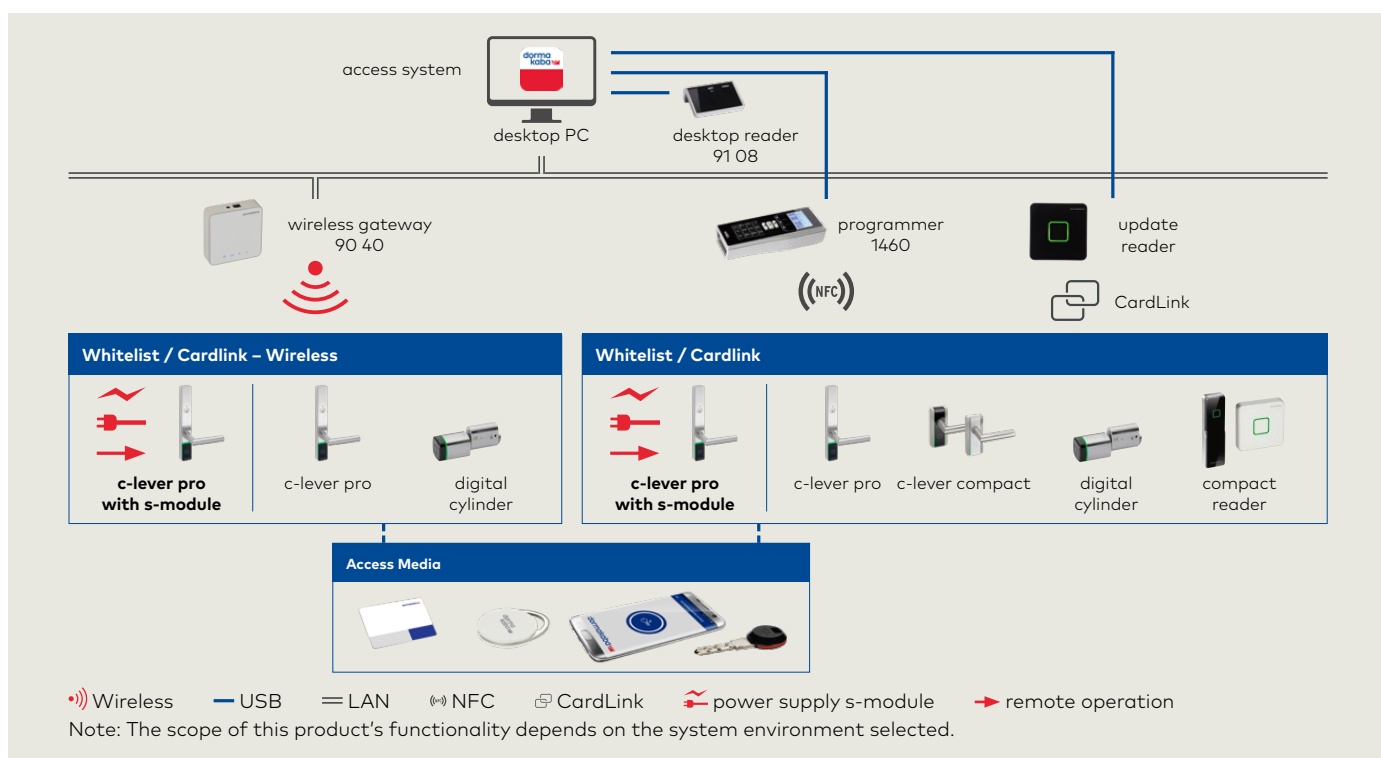
You can also upgrade the c-lever pro with the s-module as an accessory. In this case, the battery holder is removed to make room for the s-module.

The s-module printed circuit board provides a connection for an external low-voltage power supply. In addition, you can connect a switch contact to the potential-free input for external opening. This functionality is configured using the system software.

Seamless integration of the c-lever pro into your access system provides transparent and easy-to-administer access control.



Topology



FAQ

Do you have questions?
We have the answers.

FAQ

With which systems is the c-lever pro with s-module compatible?

The c-lever pro with s-module is compatible with the following dormakaba access systems:



How can the c-lever pro be used on different inside and outside doors and locations?

The large selection of different c-lever pro options and variants provides a suitable solution for virtually any door situation, ensuring a high level of building security.

What happens during a power failure?

To ensure functionality during a power failure, you have the option of inserting the battery compartment instead of the cylinder (blind plate) in addition to the s-module. To find out more about the supported combinations of this option please contact your dormakaba specialised partner.

What needs to be considered with regard to the TouchGo function?

The c-lever pro with TouchGo function recognises the authorised transponder in your pocket without your having to hold up a key or access medium. When you touch the door handle, the fitting releases the door locking device – which is how you enter with normal lever handle operation.

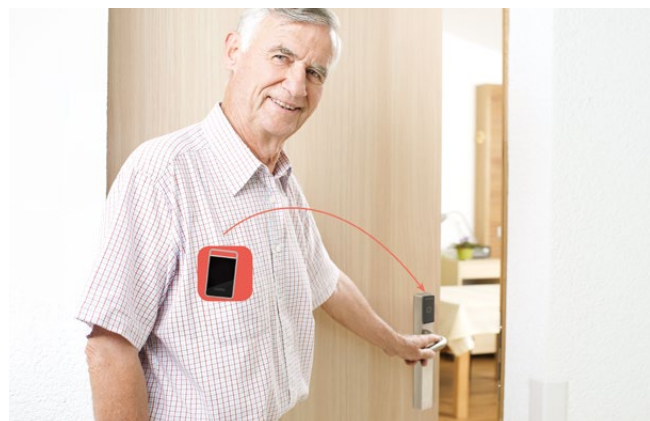
Here as well, you can use an external power supply with the s-module. Please note, however, that the recommended voltage filter must be used with the s-module in combination with TouchGo technology.

Is the c-lever pro with s-module compatible with the wireless function?

Yes, wireless works with the s-module, however, the remote operation cannot be used in this case.

Can the c-lever pro also be integrated into other systems such as building control technology?

Yes, the c-lever pro with the s-module offers a simple connection to an existing building control system for the centralised control of all doors, for example, in case of a fire or an emergency. However, the use and configuration of the potential-free input contact depends on the selected system software.



Are you currently planning an access system?

Are you interested in the c-lever pro with the s-module? Please feel free to talk to us and take a look at further documents with other interesting application suggestions for our products on our [website](#).

About dormakaba

dormakaba offers a comprehensive portfolio of products, solutions and services for anything involving doors and secure access to buildings and rooms, all from one provider. This includes master key systems, fully networked electronic access control, physical access and automatic door systems, hinges, fittings, door closers and stoppers, attendance recording, operational data recording, hotel locking systems and high-security locks.

With our numerous cooperation partners, we are your local service in more than 130 countries. Wherever you are in the world, you can benefit from sustainable products, solutions and services that give you a lasting feeling of safety.

Subject to technical modifications.
© dormakaba. Version 02/2021

We look forward to hearing from you.

dormakaba Suomi Oy
info.fi@dormakaba.com
www.dormakaba.fi

dormakaba Norge AS
firmapost.no@dormakaba.com
www.dormakaba.no

dormakaba Danmark A/S
info.dk@dormakaba.com
www.dormakaba.dk

dormakaba Sverige AB
info.se@dormakaba.com
www.dormakaba.se