

# High security key switch

## 85-350120-NI & 7-350120-NI



**Description:**

High-security rotary cam key switch featuring a sophisticated multi-row pin tumbler cylinder mechanism. Suitable for heavy-duty industrial applications where secure control of switching is required.

**Specification:**

- 2 pole, 2 position changeover key switch with electrically isolated contacts (no links between terminals).
- 90 degree operating between 12 o'clock and 3 o'clock, both positions latched.
- Switch modules offer screw terminals as standard
- High security cylinder with Bayonet mounted switch allowing easier/separate wiring.

**Cylinder Features:**

The dormakaba quattro Plus cylinder range, with its patent protected reversible key (K85), is designed for all applications where security, durability and strict factory key control are paramount

- Strong reversible nickel silver keys.
- dormakaba quattro Plus key blanks are protected by patent and are not available to the trade (K58 Systems)
- 4 radially arranged pin rows on up to 22 tumbler pin pairs on up to 44 possible positions - allowing more than 2 trillion possible keyings.
- European patent protection until 2033 (K85 Systems)
- High security key registration.
- 12 multi coloured key clips available for easy identification.

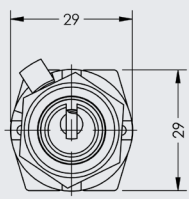
**dormakaba key switches are ideal in the following areas:**

- Control and Load Switches
- Changeover, Off/On and Spring Return - Control Switches
- Automation and control of machinery
- Industrial control panels
- Door barriers and gate control
- Shutter controls
- Multiple key entry options for OEM applications
- Lift and escalator controls
- Alarm set switch
- Desk and control panel switches for the Rail Industry

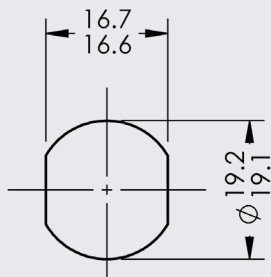
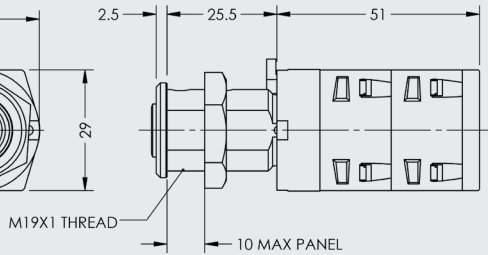
**Item Codes:**

85-350120-NI	quattro Plus (K85)	Active System
7-350120-NI	quattro Plus (K58)	O1 Legacy System

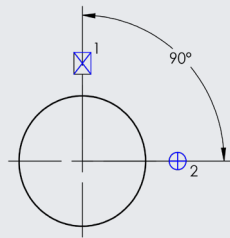
Key switch end view



Key switch side view



Panel Cutout



KID100- Key Entry / Withdrawal  
at position 1 - 90°

Movement to position 2, stop,  
Key Retained

## Switch Specifications

<b>Contact rating, resistive load</b>	24V DC = 10A 12V DC = 10A 440V AC = 10A (0.65 pf)
<b>Minimum Volts/amps</b>	20V/5 mA
<b>Contact Material</b>	Silver (Gold optional)
<b>Mechanical Service Life</b>	< 1,000,000 operations
<b>Operating temperature range</b>	Min air temperature <ul style="list-style-type: none"> <li>-25 °C = No excessive shock or vibration</li> <li>-5 °C = Normal use.</li> </ul> Max air temperature. For 100% thermal rating <ul style="list-style-type: none"> <li>+55 °C (average over 24 hrs with peaks up to 60 °C)</li> </ul>
<b>Depth behind panel</b>	76.5mm
<b>Terminal type</b>	Screw

Datasheet: PDS-009-02

Any questions? We would be happy to advise you.

Contact us on: **01884 256464**