

ICU1200

Healthcare Manual Bi-directional Swing Door with Bi-fold Function



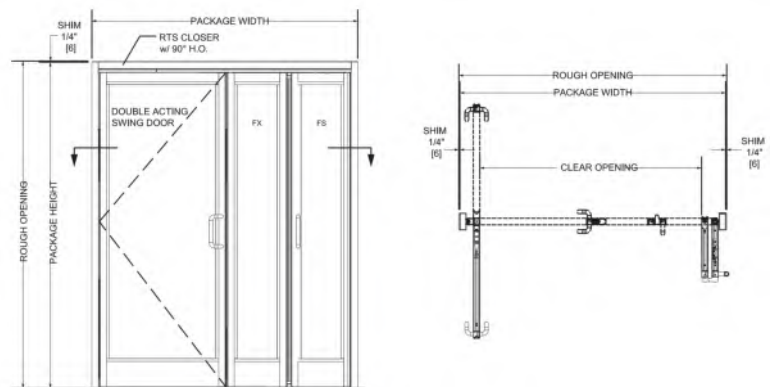
Standard ICU Features

- Heavy-duty Delrin® rollers
- A variety of package sizes to fit application
- Sidelites with vertical and horizontal weatherstrips
- Low maintenance
- Stainless steel pull handles on both the swing & bi-fold door
- Heavy duty bottom pivot

Description

The ICU1200 is a three-panel door that combines the ease of a bi-directional swing door with the expanded access of a bi-fold door. It is the perfect fit for installations with limited width and self-closing requirements.

For normal traffic, the swing door opens conveniently in either direction. For a wider opening, the bi-fold door can be collapsed to open nearly the full width of the doorway.



ICU1200 Technical specification

Configuration

Standard finishes	Clear or Dark Bronze Anodized
Package height	up to 9'-0" (108")
Package width	Up to 9'-11 1/4" (119 - 1/4")
Door panels	2-5/8" Narrow stile [Including 3/4" wide glass stop] 3-1/4" Muntin mounted at 41.75" [Including 3/4" wide glass stop] 4" Bottom rail [Including 3/4" wide Glass stop] 7" & 10" Bottom rails available
Jamb tubes	1-3/4" x 4-1/2" smooth or double pocket 2" x 6" option available

Safety and security

Lock	Maximum security two-point mortise lock
-------------	---

Features

Threshold	Surface mounted or recessed
Weather stripping	Brush or Santoprene rubber
Glass stops	1/4" to 1" In door panels

ICU1200	Minimum	Maximum
Overall frame width	7'	9'-11 1/4"
Rough opening width	6' 1/2"	9'-11 3/4"
Swing door clear opening	32 3/8"	44 3/8"
Header height	6'-10 3/4"	9'
Rough opening height	6'-10 1/2"	9' - 1/4"

Standards of compliance

- 3. ICC/IBC - International Building Code
- 6. NFPA 101 - Life Safety Code



Any questions? We would be happy to assist.

Contact Customer Service at 800 523 8483