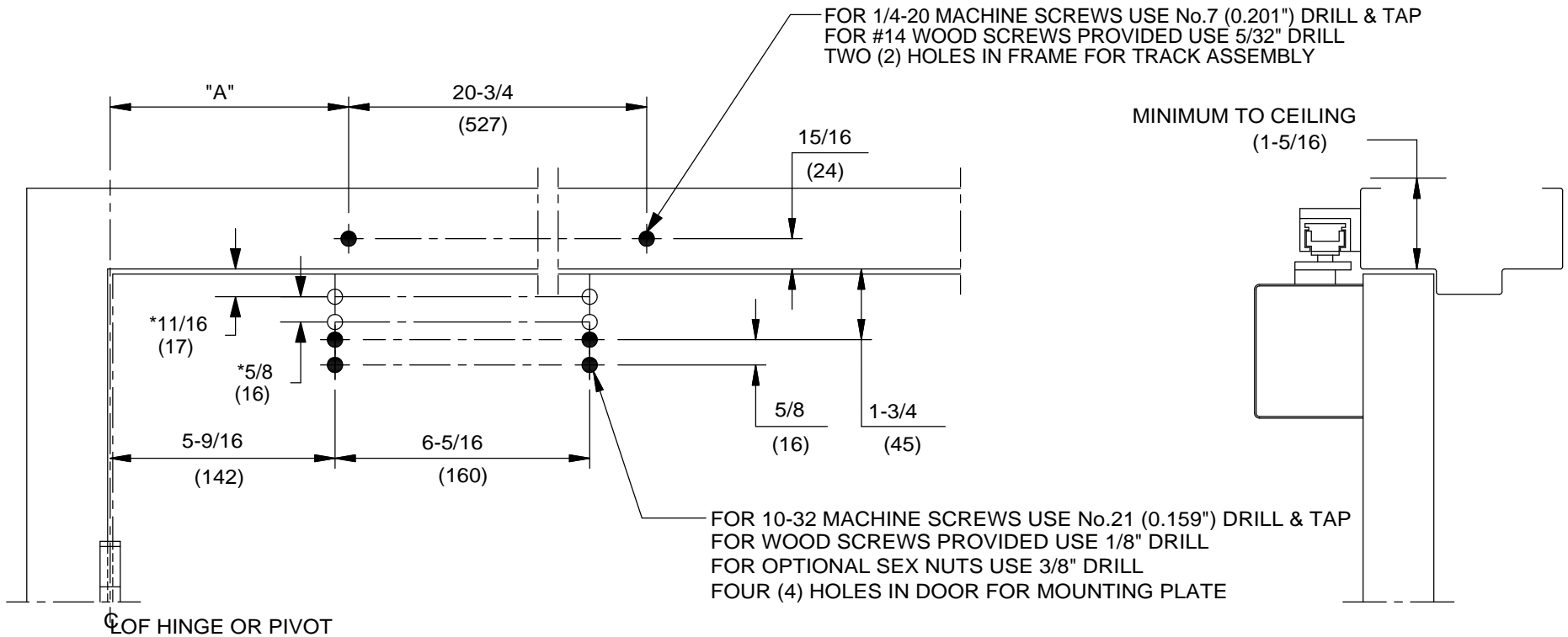


NOTES:

1. DO NOT SCALE DRAWING.
2. DIMENSIONS ARE IN INCHES/(MM).
3. RIGHT HAND DOOR SHOWN.
4. SEX NUTS RECOMMENDED FOR ATTACHMENT OF COMPONENTS ON UNREINFORCED, COMPOSITE OR LABELED FIRE DOORS.
5. TEMPLATE FOR 4-1/2" X 4-1/2" BUTT HINGES AND 3/4" OFFSET PIVOTS.
6. MINIMUM DOOR WIDTH 36".
7. \*11/16" & \*5/8" ARE OPTIONAL MOUNTING FOR NARROW TOP RAIL

DEGREE OF DEADSTOP	DIM. "A"
85°	$\frac{8-1/8}{(206)}$
90°	$\frac{7-1/2}{(190)}$
95°	$\frac{7}{(178)}$
100°	$\frac{6-1/2}{(165)}$
105°	$\frac{6}{(152)}$
110°	$\frac{5-1/2}{(140)}$



Always consult Dorma's web site for latest template at [www.dorma-usa.com](http://www.dorma-usa.com) or call 1-800-523-8483.

DOOR CLOSER MODELS: TS93 ST  
TRACK INSTALLATION (PULL SIDE MOUNT)  
WITH ANGLE BRACKET



DORMA Door Controls  
Reamstown, PA 17567

REV	DESCRIPTION	BY	DATE
05/09	ORIGINAL DOCUMENT	KS	5/20/09
10/09	REMOVED NOTE 5	KS	10/12/09
02/12	REVISED DIM "A" CHART (DEGREE OF DEAD STOP); ECN 4899	TSB	02/12

Always consult Dorma's web site for latest template at [www.dorma-usa.com](http://www.dorma-usa.com) or call 1-800-523-8483.



DORMA Door Controls  
 Reamstown, PA 17567