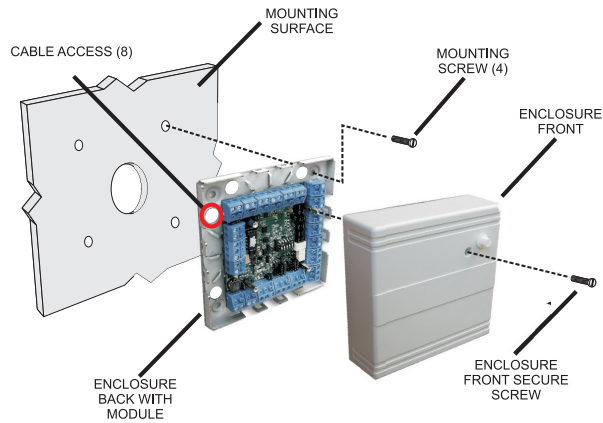


## 1. MOUNTING



## 2. WIRING

### A. Connect Access Manager 200 and Door Unit

RS485 between Access Manager 200 and Door Unit  
12 to 24V DC Power Source (24V recommended)

### B. Connect FPK (TLR401B or AR402) RS485 reader to Door Unit

12V DC (red)  
GND (black)  
RS485A (pink)  
RS485B (gray)

### C. Connect door locking hardware

Locking device (electric strike shown)  
Door contact (monitors door status)  
Request for exit / PIR (exit button shown)  
Locking hardware power (DC Power Source)

## 3. NETWORK

### A. Ethernet connection

Using CAT5 patch cable connect the Access Manager 200 to an Ethernet router or directly to a PC using a CAT5 crossed cable

### B. Setting the IP address

Set the IP address of the connected PC to allow connection to the Access Manager 200 default IP address 192.168.50.120

(See Software Configuration Manual for details.)

### Kaba Access & Data Systems Americas

Tel: 800-849-8324 | 336-725-1331  
www.kaba-adsamericas.com

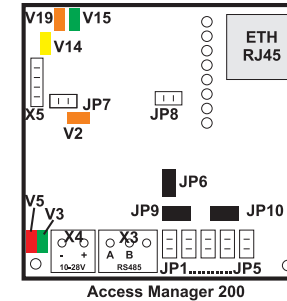
LIT1067 0613 © Copyright 2013 Kaba ADS Americas. All rights reserved.

## 4. POWER ON

### A. Plug in DC power source

### B. Verify the Access Manager 200 LED indicators

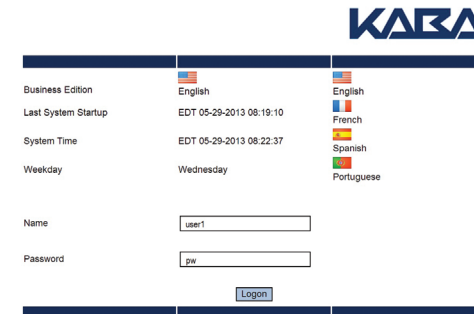
- V2 (On = RS485 Data Transmission)
- V3 (Blinking = Application Software Running)
- V5 (On = Power On)
- V14 (On = 100MHz Ethernet Connection)
- V15 (On = Ethernet Connected)
- V19 (On = Ethernet Data Transmission)



## 5. LOG IN AND CONFIGURE

### A. Connecting to the Access Manager 200

Open the Web browser of the connected PC  
Enter the default IP address of 192.168.50.120 at the address line  
The "User Login and Status" screen is displayed



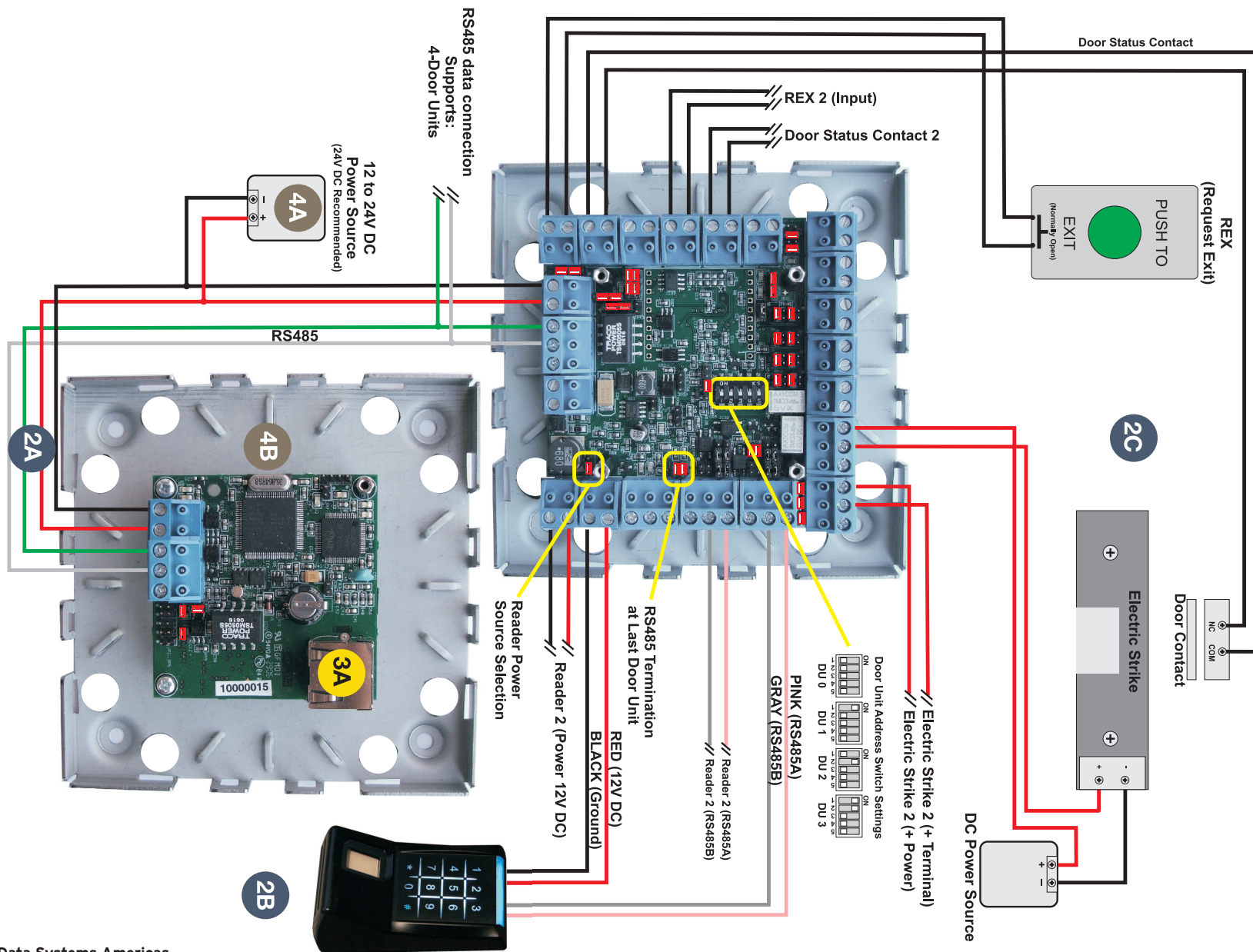
### B. Log in to the system

Enter the name "user1"  
Enter the password "pw"  
Click Logon

### C. Modify the system for your unique application

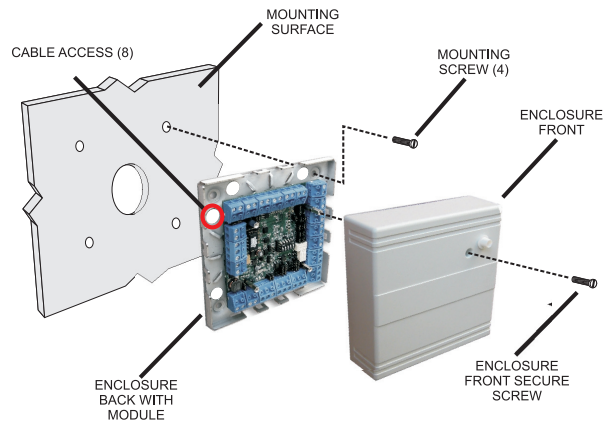
Modify the pre-loaded configuration to your needs  
Enroll Cards and add Persons as required

(See Software Configuration Manual for details.)



For illustration only; local municipality code may require alternate configuration

## 1. MOUNTING



## 2. WIRING

### A. Connect Access Manager 200 and Door Unit

RS485 between Access Manager 200 and Door Unit  
12 to 24V DC Power Source (24V recommended)

### B. Connect proximity reader to Door Unit

12V DC (red)  
GND (black)  
Data 0 (green)  
Data 1 (white)  
Shield (must be connected)  
Beeper (yellow)  
Green LED (orange)

### C. Connect door locking hardware

Locking device (electric strike shown)  
Door contact (monitors door status)  
Request for exit / PIR (exit button shown)  
Locking hardware power (DC Power Source)

## 3. NETWORK

### A. Ethernet connection

Using CAT5 patch cable connect the Access Manager 200 to an Ethernet router or directly to a PC using a CAT5 crossed cable

### B. Setting the IP address

Set the IP address of the connected PC to allow connection to the Access Manager 200 default IP address 192.168.50.120

(See Software Configuration Manual for details.)

### Kaba Access & Data Systems Americas

Tel: 800-849-8324 | 336-725-1331  
www.kaba-adsamericas.com

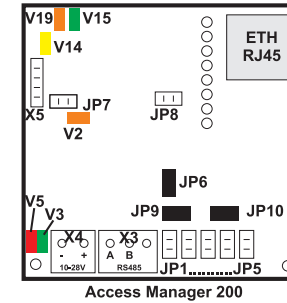
LIT1067 0613 © Copyright 2013 Kaba ADS Americas. All rights reserved.

## 4. POWER ON

### A. Plug in DC power source

### B. Verify the Access Manager 200 LED indicators

V2 (On = RS485 Data Transmission)  
V3 (Blinking = Application Software Running)  
V5 (On = Power On)  
V14 (On = 100MHz Ethernet Connection)  
V15 (On = Ethernet Connected)  
V19 (On = Ethernet Data Transmission)



## 5. LOG IN AND CONFIGURE

### A. Connecting to the Access Manager 200

Open the Web browser of the connected PC  
Enter the default IP address of 192.168.50.120 at the address line  
The "User Login and Status" screen is displayed



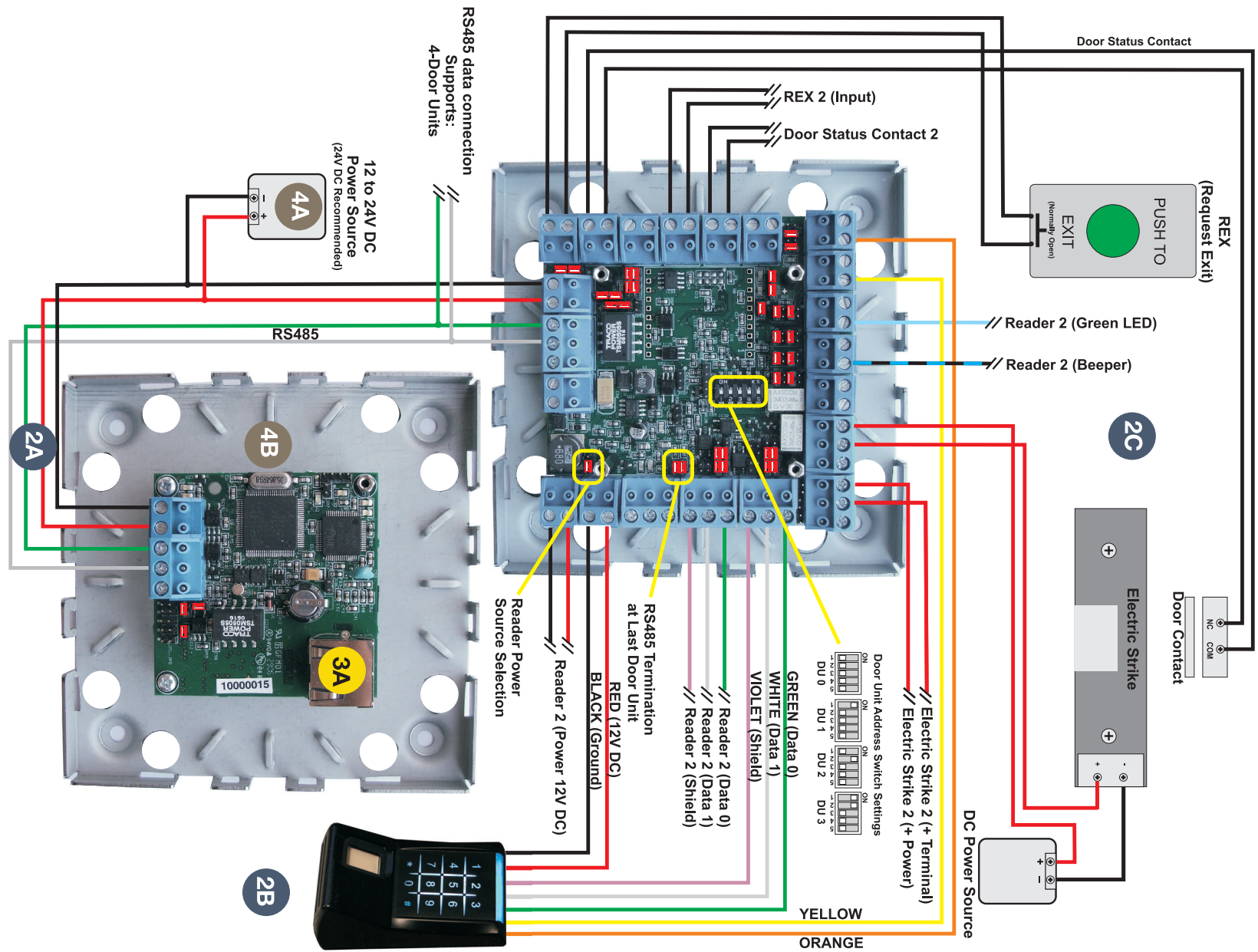
### B. Log in to the system

Enter the name "user1"  
Enter the password "pw"  
Click Logon

### C. Modify the system for your unique application

Modify the pre-loaded configuration to your needs  
Enroll Cards and add Persons as required

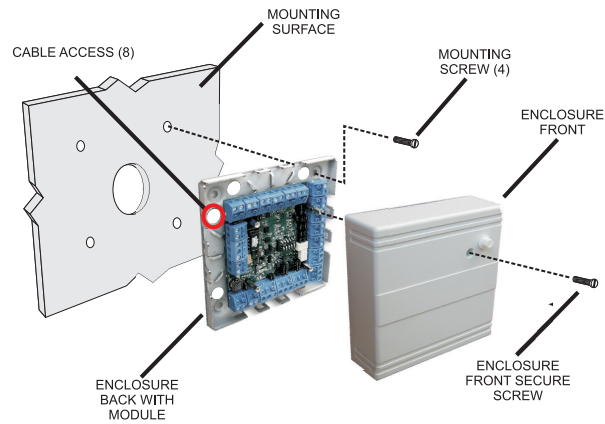
(See Software Configuration Manual for details.)



For illustration only; local municipality code may require alternate configuration



## 1. MOUNTING



## 2. WIRING

### A. Connect Access Manager 200 and Door Unit

RS485 between Access Manager 200 and Door Unit  
12 to 24V DC Power Source (24V recommended)

### B. Connect FPK (TLR401B or AR402) RS485 reader to Door Unit

12V DC (red)  
GND (black)  
Data 0 (green)  
Data 1 (white)  
Shield (must be connected)  
Beeper (yellow)  
Green LED (orange)

### C. Connect door locking hardware

Locking device (electric strike shown)  
Door contact (monitors door status)  
Request for exit / PIR (exit button shown)  
Locking hardware power (DC Power Source)

## 3. NETWORK

### A. Ethernet connection

Using CAT5 patch cable connect the Access Manager 200 to an Ethernet router or directly to a PC using a CAT5 crossed cable

### B. Setting the IP address

Set the IP address of the connected PC to allow connection to the Access Manager 200 default IP address 192.168.50.120

(See Software Configuration Manual for details.)

## Kaba Access & Data Systems Americas

Tel: 800-849-8324 | 336-725-1331

www.kaba-adsamericas.com

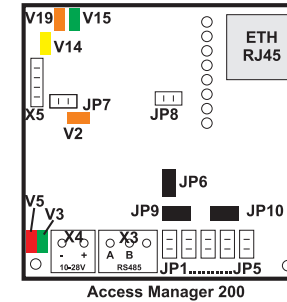
LIT1067 0613 © Copyright 2013 Kaba ADS Americas. All rights reserved.

## 4. POWER ON

### A. Plug in DC power source

### B. Verify the Access Manager 200 LED indicators

V2 (On = RS485 Data Transmission)  
V3 (Blinking = Application Software Running)  
V5 (On = Power On)  
V14 (On = 100MHz Ethernet Connection)  
V15 (On = Ethernet Connected)  
V19 (On = Ethernet Data Transmission)



## 5. LOG IN AND CONFIGURE

### A. Connecting to the Access Manager 200

Open the Web browser of the connected PC  
Enter the default IP address of 192.168.50.120 at the address line  
The "User Login and Status" screen is displayed



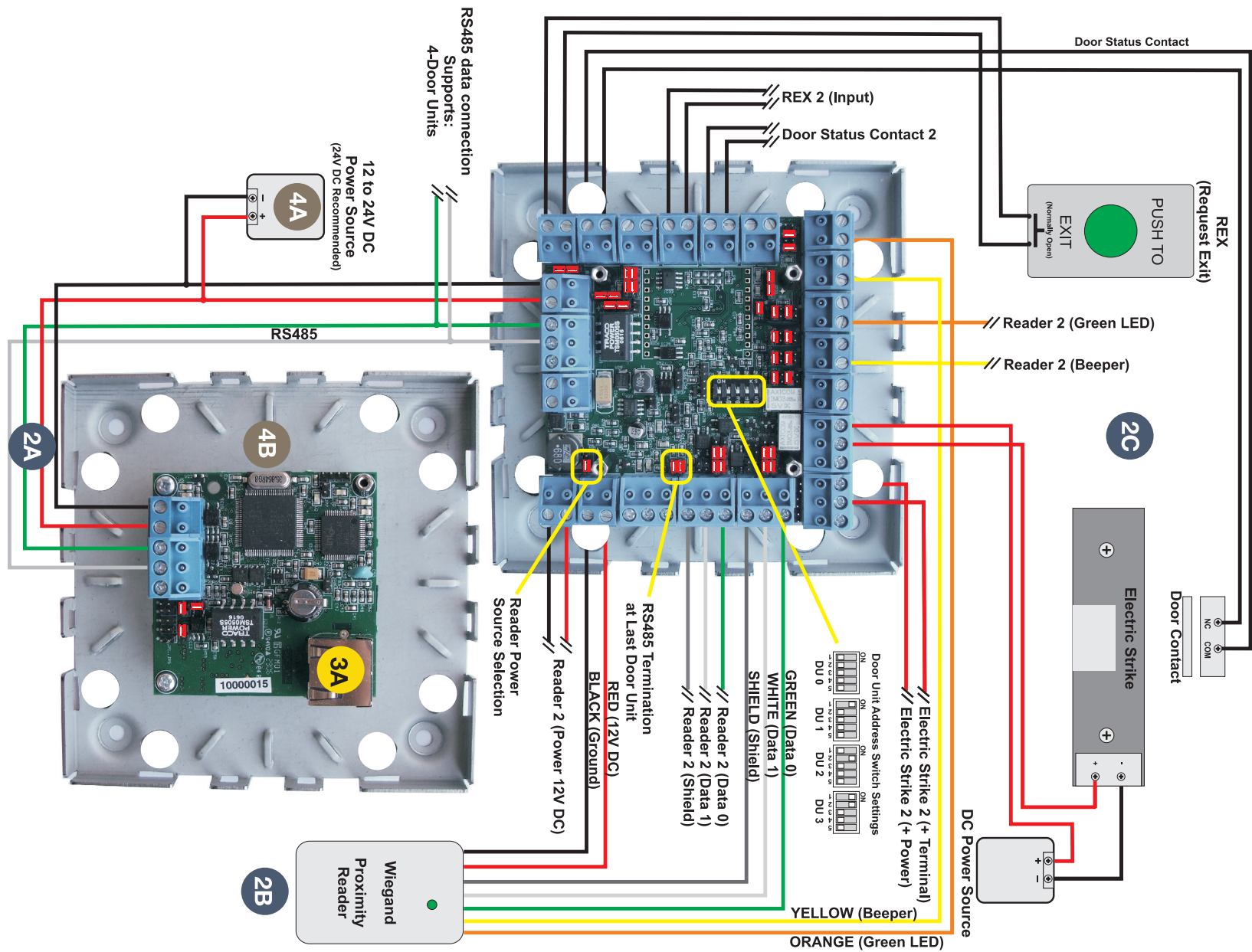
### B. Log in to the system

Enter the name "user1"  
Enter the password "pw"  
Click Logon

### C. Modify the system for your unique application

Modify the pre-loaded configuration to your needs  
Enroll Cards and add Persons as required

(See Software Configuration Manual for details.)



For illustration only, local municipality code may require alternate configuration