

# MUTO Comfort XL DORMOTION 80

## Two Door Panels Fixed at Ceiling



Dorma Drive  
Reamstown, PA 17567  
717-336-3881

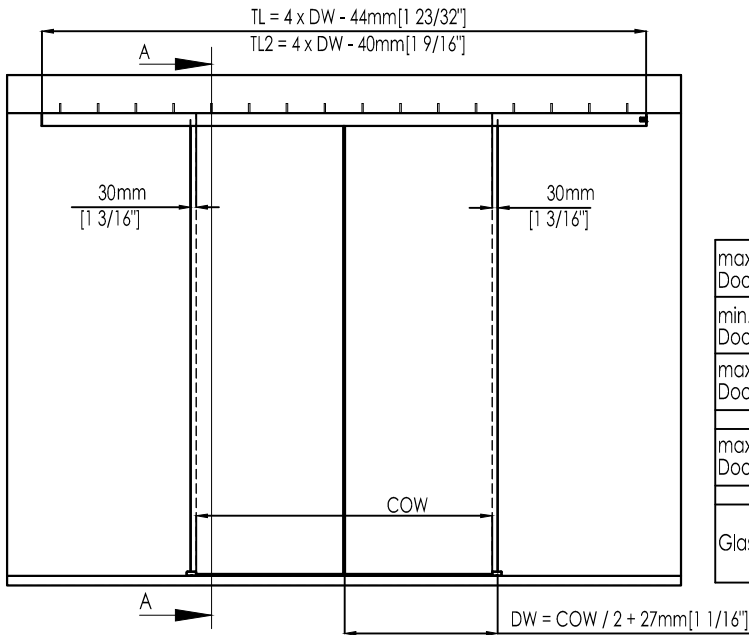
REV.	DATE

**TOLERANCES**  
UNLESS OTHERWISE  
SPECIFIED:  
DECIMAL .XXX = ± .005  
.XX = ± .01  
FRACTION ± 1/16  
DEGREE ± 3°

### MUTO COMFORT XL DORMOTION 80 TWO DOOR PANELS FIXED AT CEILING

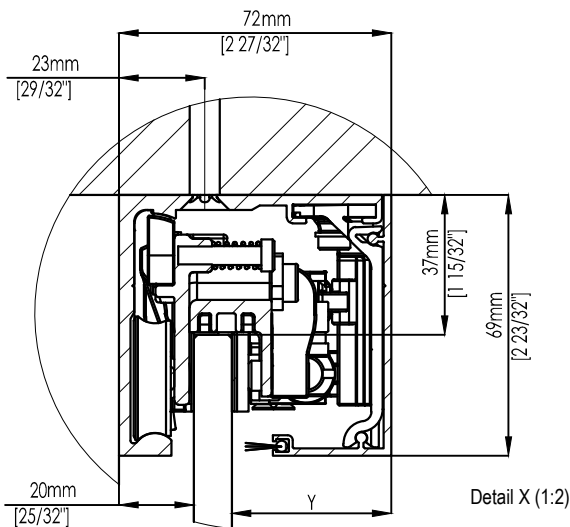
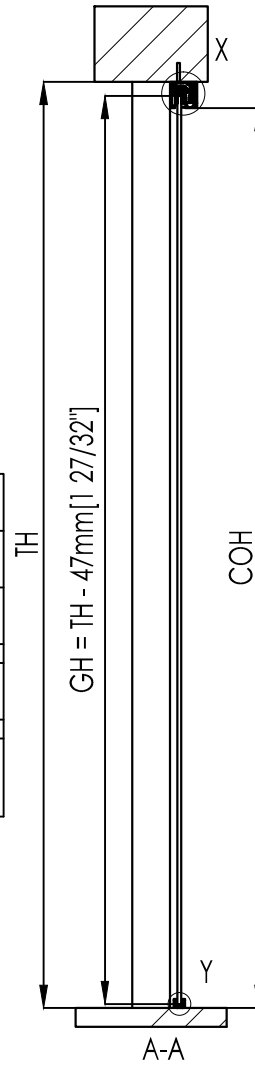
**PROPRIETARY AND CONFIDENTIAL**  
This document and information is the proprietary property of DORMA GLASS. Any party, by accepting this document and information, assumes custody and control hereof and agrees that such is given in confidence and this document and the information set forth therein will not be copied, used or reproduced in whole or in part, nor its contents revealed to any person in any manner that would cause the loss or impairment of the owner's legal rights including, but not limited to, the owner's common law copyrights thereto.

DRAWN BY: **JA**  
DATE: **10.05.15**  
SCALE: **1:20**  
SHEET: **1 OF 1**  
DRAWING NO.  
**MUTO C XL**  
**DM 80 CE-BI**  
DO NOT SCALE DRAWING

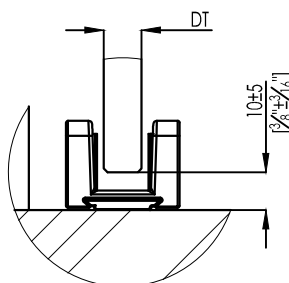


(1:40)

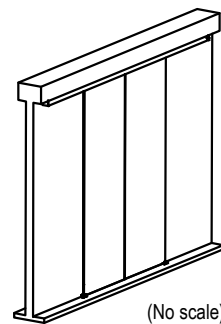
max. Door width:	1450mm 57in
min. Door width:	810mm 32in
max. Door height:	3000mm 118in
max. Door weight:	80 kg 176 in
Glass thickness:	tg/tlg 8 - 13,5mm 5/8" - 1/2"



Detail X (1:2)



Detail Y (1:2)



DW	Door Width
TL	Length Track
TL2	length of track inclusive end cover
GH	Glass Height
TH	Total System Height
COH	Clear Opening Height
COW	Clear Opening Width
SW	Sidelight Width
DT	Door Thickness
ST	Sidelight Thickness
Y	72mm - 20mm - DT [2 27/32" - 25/32" - DT]