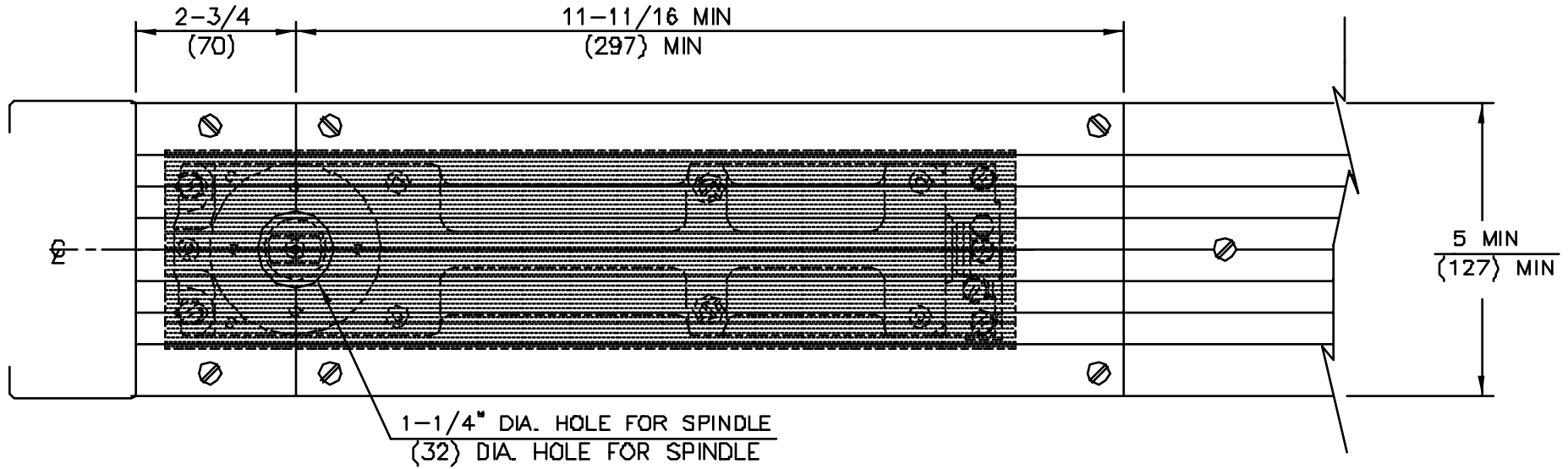


No.	REVISIONS	DATE
1	REVISED DESCRIPTION	08/03/89
2	TEMPLATE REDRAWN ON CAD	08/27/97

TOP VIEW

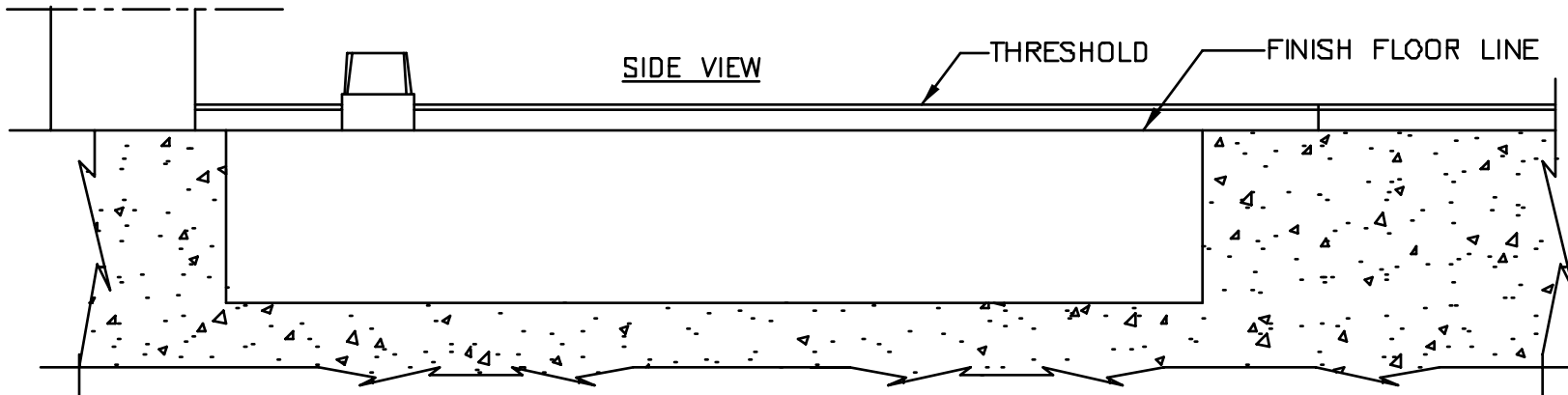


1-1/4" DIA. HOLE FOR SPINDLE  
{32} DIA. HOLE FOR SPINDLE

NOTES

1. DO NOT SCALE DRAWING.
2. DIMENSIONS ARE IN INCHES/{mm}.
3. TOP OF CEMENT CASE MUST BE FLUSH WITH FINISH FLOOR LINE.
4. CEMENT CASE MUST BE LEVEL AND PARALLEL TO FRAME.
5. SEALING COMPOUND SC1 IS HIGHLY RECOMMENDED FOR EXTERIOR DOORS

SIDE VIEW



FLOOR CLOSER MODELS: BTS SERIES CENTER HUNG APPLICATIONS  
THRESHOLD PREPARATION  
2-3/4" BACKSET



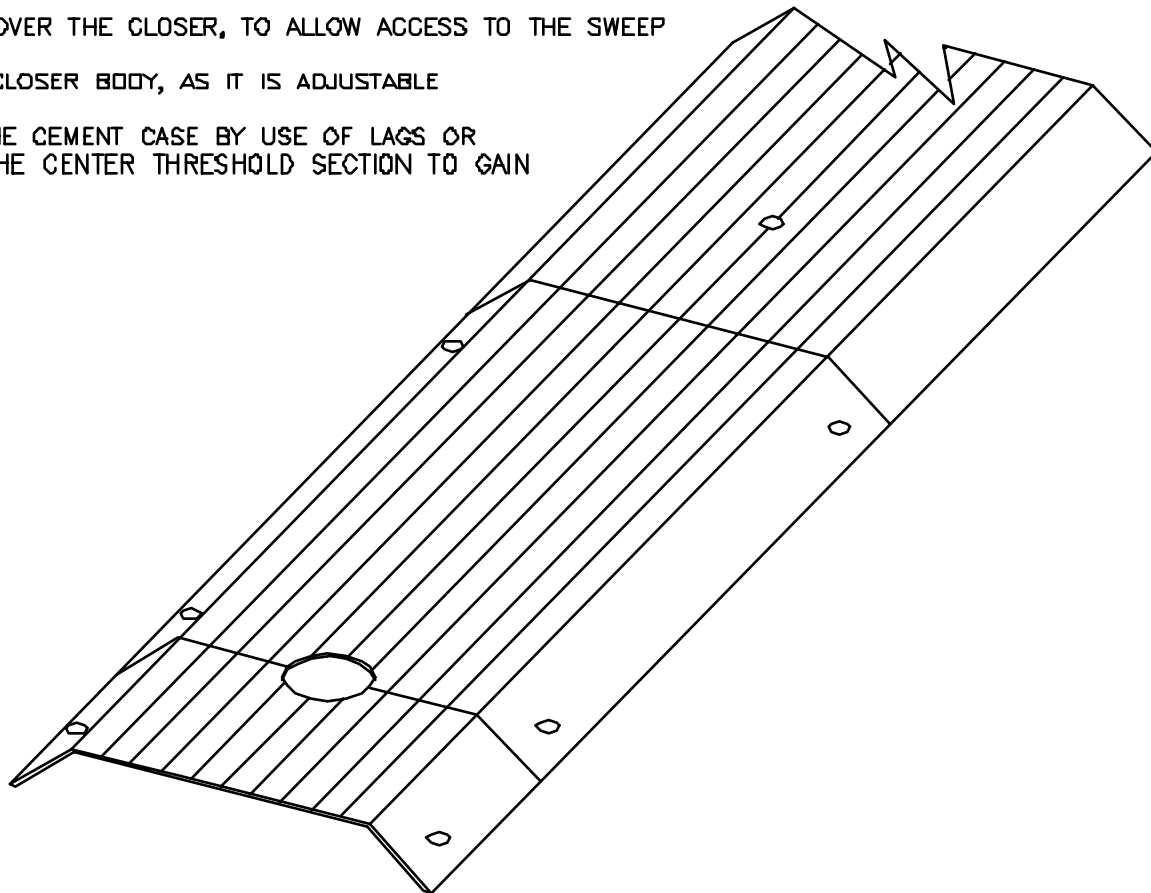
DORMA Architectural Hardware  
REAMSTOWN, PENNSYLVANIA 17567  
TEMPLATE No. BTS-28 (2)

THRESHOLDS IN CONJUNCTION WITH  
BTS SERIES CENTER HUNG FLOOR CLOSER

THREE PIECE REMOVABLE THRESHOLDS ARE REQUIRED OVER THE CLOSER, TO ALLOW ACCESS TO THE SWEEP  
AND LATCH VALVES.

THRESHOLD CAN NOT BE ATTACHED DIRECTLY TO THE CLOSER BODY, AS IT IS ADJUSTABLE  
WITHIN THE CEMENT CASE.

THRESHOLD MUST BE FASTENED ON BOTH SIDES OF THE CEMENT CASE BY USE OF LAGS OR  
A SIMILAR METHOD. THIS WILL ALLOW REMOVAL OF THE CENTER THRESHOLD SECTION TO GAIN  
ACCESS TO THE CLOSER.



DORMA DOOR CONTROLS INC.  
REAMSTOWN, PENNSYLVANIA 17567  
TEMPLATE No. BTS-28 ②  
SIDE 2 OF 2

ALWAYS CONSULT DORMA'S WEB SITE FOR LATEST TEMPLATE AT [WWW.DORMA-USA.COM](http://WWW.DORMA-USA.COM) OR CALL 1 800 523 8483