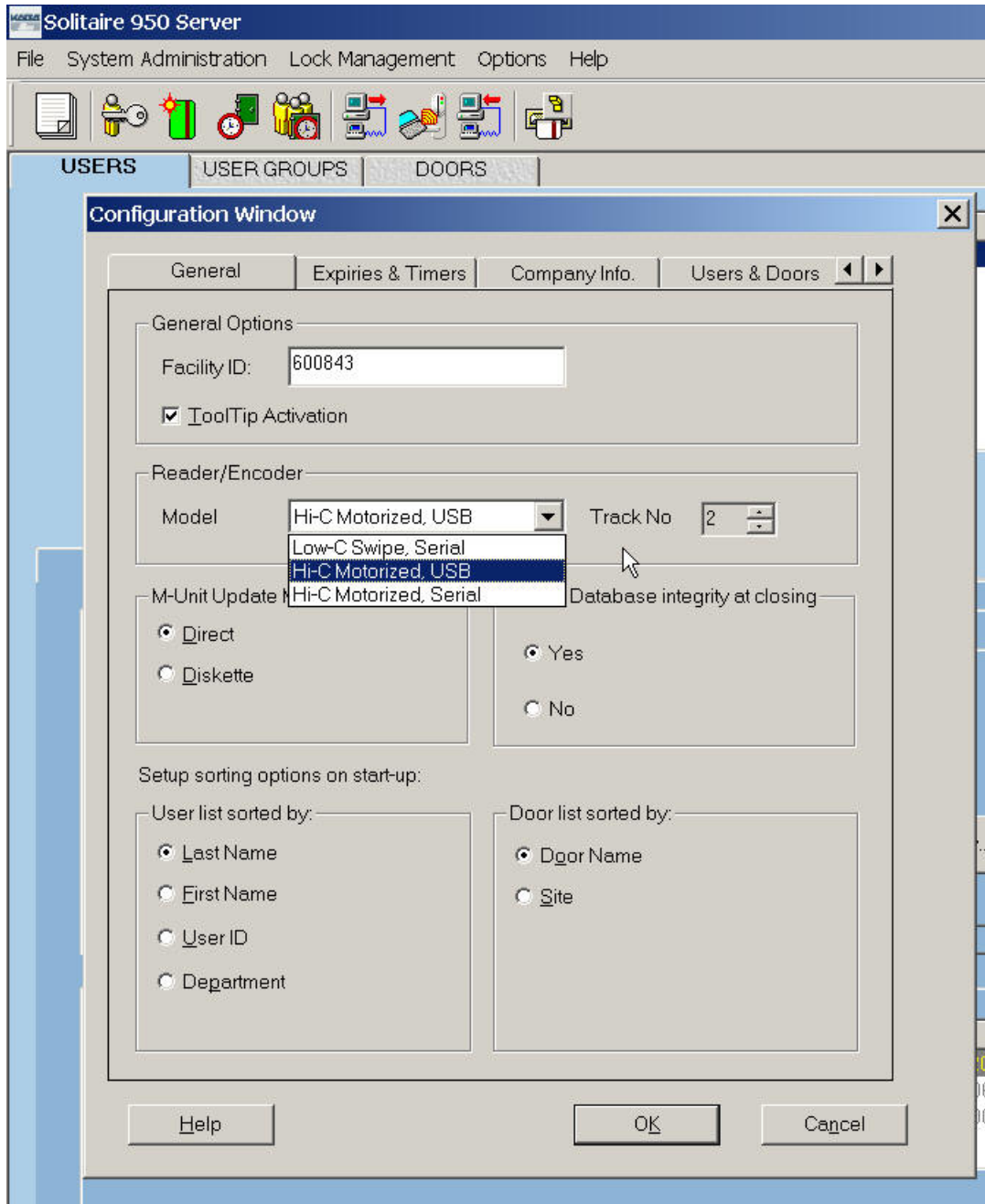


Solitaire 950: USB High-C Motorized Encoder Setup

After the first install of the **Solitaire 950** software, In the **Options/Setup/Workstation** menu screen, select the **Reader/Encoder Model** as **Hi-C Motorized USB** for the new USB encoder and additionally, select the **Track No.** as **2** (default), unless your locks work on either track #1 or #3 in which case, select the corresponding track# and save the setup.



Kaba Access Control Technical Support Telephone: 888-217-5654
[February 2007]