

**NOTES:**

- 1- USE DIMENSIONS FROM DIAGRAM A TABLE TO ADJUST BACK-SET POSITION ACCORDING TO LOW AND HIGH BEVEL DOOR EDGE.
- 2- DIMENSIONS ARE SYMETRICAL ABOUT  $\text{CL}$  UNLESS OTHERWISE NOTED.
- 3- REFER TO SPECIFIC TOLERANCES TABLE FOR DIMENSIONS MARKED WITH #
- 4- DEPTH MEASURED FROM THE FRONT OF DOOR, ON THE CENTER LINE  $\text{CL}$ .
- 5- THIS HOLE ONLY FOR LOCK MODELS WITH CABLE WIRES THROUGH THE DOOR.

SPECIFIC TOLERANCES	
DISTANCES	$\pm .030$ [ $\pm .75$ ]
HOLES $\varnothing$	$\varnothing \pm .010$ [ $\pm .25$ ]
DIMS MARKED #	$+ .030 / - .000$ [ $+ .75 / - .00$ ]

REVISIONS					
REV	ECN	DESCRIPTION	FAIT PAR MADE BY	VERIF PAR CHK'D BY	DATE
1	15518	ORIGINAL RELEASE	P.P.	C.D.	30SE 2015
2	16312	ADDED E-PLEX 7900 TO TITLE BLOCK	C.B.	C.D.	20SE 2017

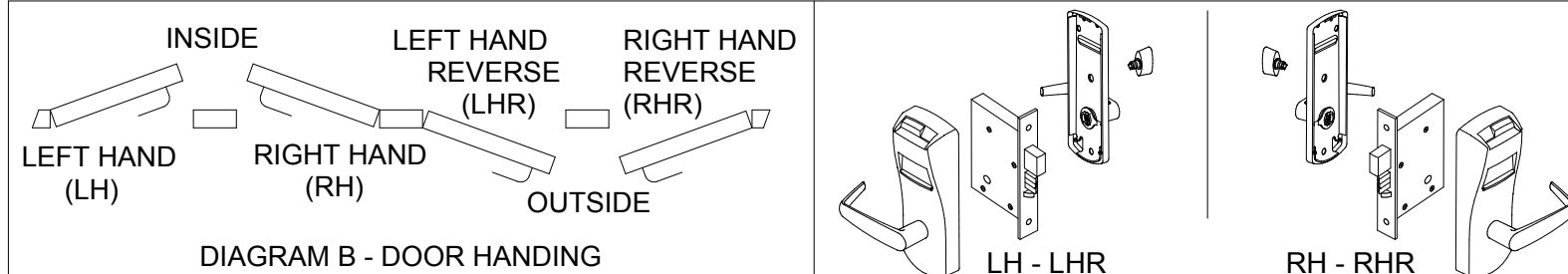
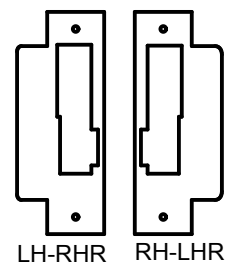
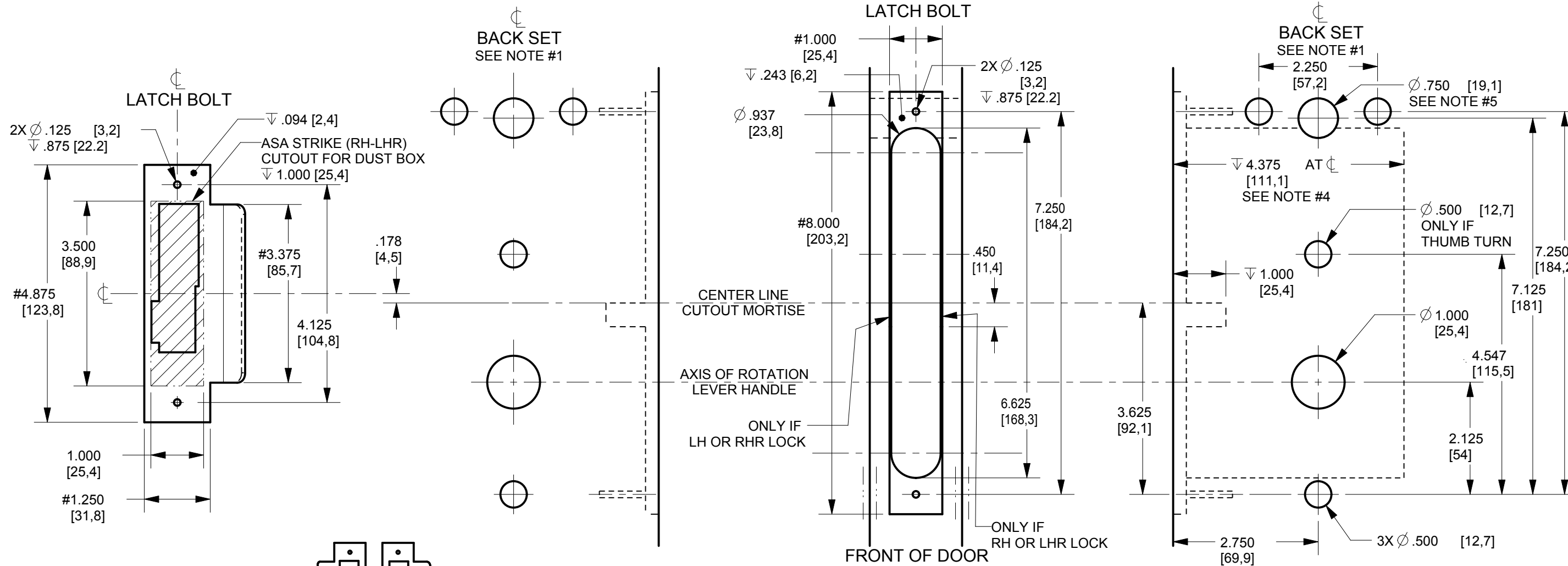


DIAGRAM A - BACK SET AJUSTEMENT FOR 3 BEVEL DOOR

DOOR THICKNESS DIMENSION X	BACK SET AJUSTEMENT DIMENSION Y
1.25 (31,8mm)	.032 (0,81mm)
1.50 (38,1mm)	.039 (1,00mm)
1.75 (44,5mm)	.046 (1,17mm)
2.00 (50,8mm)	.052 (1,32mm)
2.25 (57,2mm)	.059 (1,50mm)
2.50 (63,5mm)	.065 (1,65mm)
2.75 (69,9mm)	.072 (1,83mm)

**SYMBOLS:**  
 $\nabla$  DEEP  
 COUNTERBORE  
 $\text{CL}$  CENTER LINE  
 $\varnothing$  DIAMETER  
 NOT TO SCALE

LE MATERIAU ET LA FINITION DE CETTE PIECE DOIVENT RESPECTER LES DIRECTIVES ENVIRONNEMENTALES; REFERENCE AU STANDARD D'INGENIERIE DE KABA ES-073.  
 MATERIAL AND FINISH OF THIS PART TO COMPLY WITH ENVIRONMENTAL DIRECTIVES; REFERENCE TO KABA'S ENGINEERING STANDARD ES-073.

DIMENSIONS CRITIQUES / CRITICAL DIMENSIONS PROJECTION 3iem ANGLE / THIRD ANGLE PROJECTION NE PAS MESURER SUR LE DESSIN / DO NOT SCALE DRAWING DIMENSIONING AND TOLERANCING AS PER AMERICAN SOCIETY OF MECH ENGINEERS ASME Y14.5-1994 CE DOCUMENT EST LA PROPRIETE STRICTE DE KABA. LES DONNEES QUIIL CONTIENT NE PEUVENT ETRE COPIEES OU DIVULGUEES A UNE TIERCE PARTIE SANS LE CONSENTEMENT ECRIT DE KABA. CE DOCUMENT DEVRA ETRE RETOURNE SUR DEMANDE A KABA. THIS DOCUMENT IS PROPERTY OF KABA. THE DATA CONTAINED IS PROPRIETARY AND SHALL NOT BE COPIED OR DISCLOSED TO A THIRD PARTY WITHOUT WRITTEN CONSENT OF KABA. THIS DOCUMENT WILL BE RETURNED TO KABA UPON DEMAND. UNE VERSION FRANCAISE DE CE DOCUMENT EST DISPONIBLE SUR DEMANDE.	SANS AUTRES SPECIFICATIONS, LES DIMENSIONS SONT POUCES (millimètres) ET S'APPLIQUENT APRES FINITION. UNLESS OTHERWISE SPECIFIED, DIMENSIONS ARE INCHES (millimeters) AND APPLY AFTER FINISH. <b>TOLERANCES:</b> THIS DRAWING HAS SPECIFIC TOLERANCES, SEE NOTES CE DESSIN A DES TOLERANCES SPECIFIQUES, VOIR LES NOTES	DESSIN PAR: F.DUMONT 05N001 CONCU PAR: C.DOUCET 05N001 VERIFIE PAR: - APPROUVE PAR: - MATERIAU / MATERIAL: NOT APPLICABLE FINITION / FINISH: NOT APPLICABLE TRAITEMENT THERMIQUE / HEAT TREATMENT: NOT APPLICABLE	 7301, Decarie Boul Montreal, QC Canada H4P 2G7 www.kaba-ilco.com 660,660i,760,770,790,76,79,E-PLEX 2000, POWER-PLEX 2000 & E-PLEX 7900 LOCK SERIES DOOR PREPARATION DRAWING MORTISE ASM 1" FACE PLATE FORMAT: NO PIECE / PART NO: NO DESSIN / DRAWING NO: B ECH SCALE: N/A SEE VIEWS PG SHT: 1 DE OF: 1
--	---	---	--