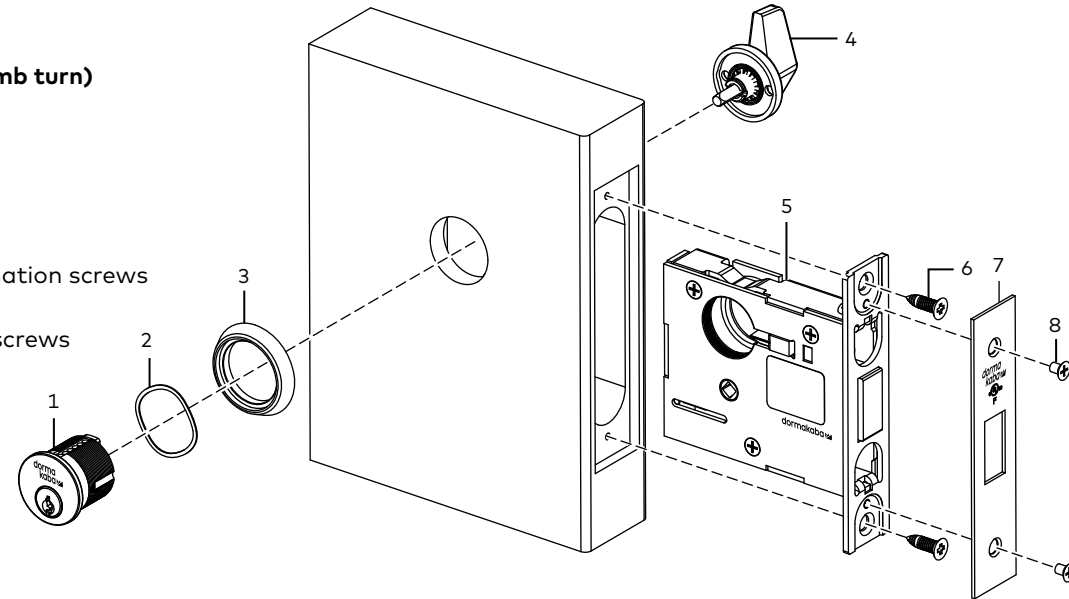


Tools required

#2 Phillips screwdriver

Part list (with standard thumb turn)

1. Mortise cylinder
2. Wave washer
3. Cylinder ring
4. Thumb turn assembly
5. Chassis
6. #12-24 x 3/4" combination screws
7. Faceplate
8. 8-32 x 1/4" flathead screws



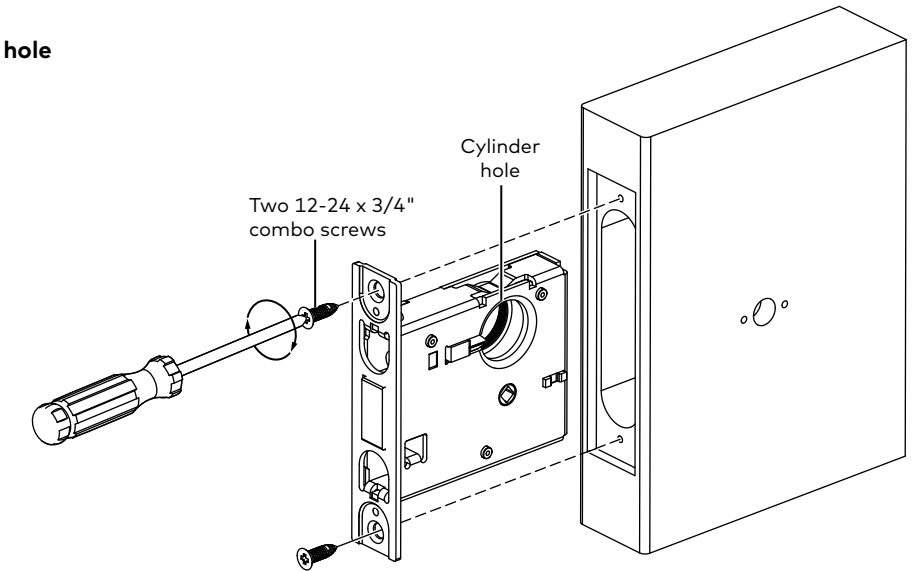
1 Installation instructions

1.1 Install lock chassis

Fig. 1

CAUTION: Orient such that cylinder hole is toward top of chassis.

- 1.1.1 Place lock body into door edge.
- 1.1.2 Secure with two 12-24 x 3/4" combo screws.



1.2 Assemble and install mortise cylinder

Fig. 2

Conventional mortise cylinder

- 1.2.1 Slide mortise cylinder through wave washer and outside cylinder ring.

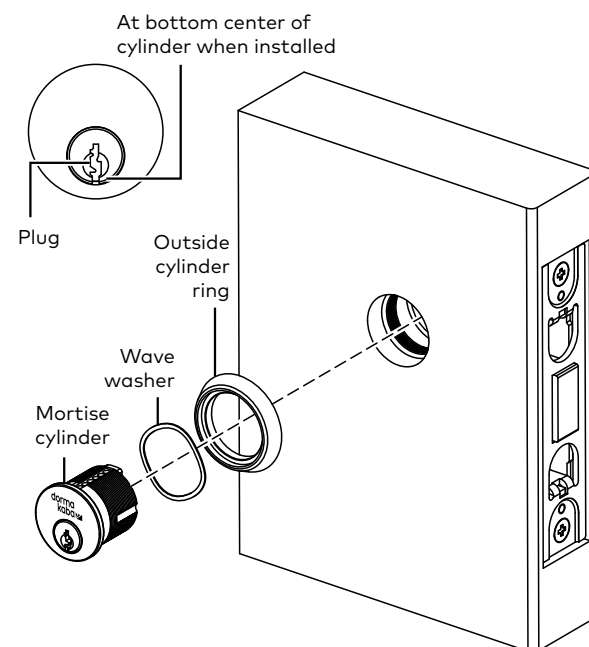
NOTE: Do not over torque key as it could cause key to bend or break.

NOTE: Ensure mortise cylinder face is flush with cylinder ring.

NOTE: MD162 Double Cylinder— Do not tighten cylinder retainer screw until both mortise cylinders have been installed.

- 1.2.2 Tighten mortise cylinder in place using cylinder retainer screw, see Fig. 4.

NOTE: For MD171 steps, see cylinder indicator x turn on page 2.



IC mortise housing

- 1.2.1 Insert core into mortise housing.
- 1.2.2 Slide mortise cylinder through wave washer and outside cylinder ring.

NOTE: Do not over torque key as it could cause key to bend or break.

NOTE: Ensure mortise cylinder face is flush with cylinder ring.

NOTE: MD162 Double Cylinder— Do not tighten cylinder retainer screws until both mortise cylinders have been installed.

- 1.2.3 Tighten mortise cylinder in place using cylinder retainer screw, see Fig. 4.

NOTE: For MD171 steps, see cylinder indicator x turn on page 2.

Fig. 3

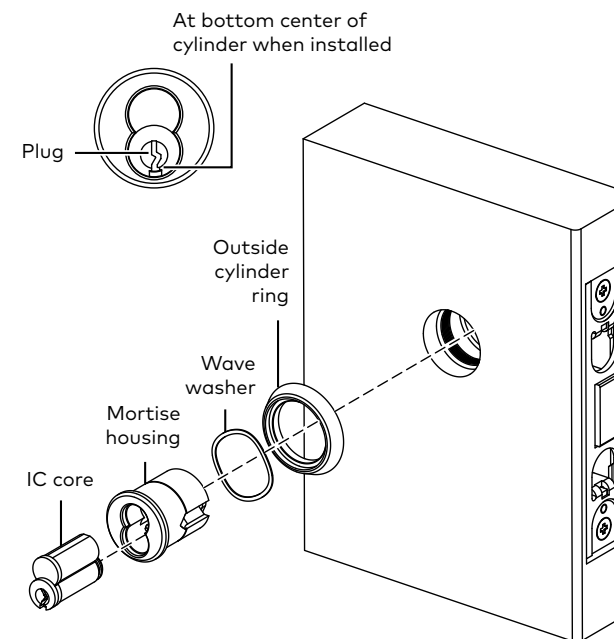
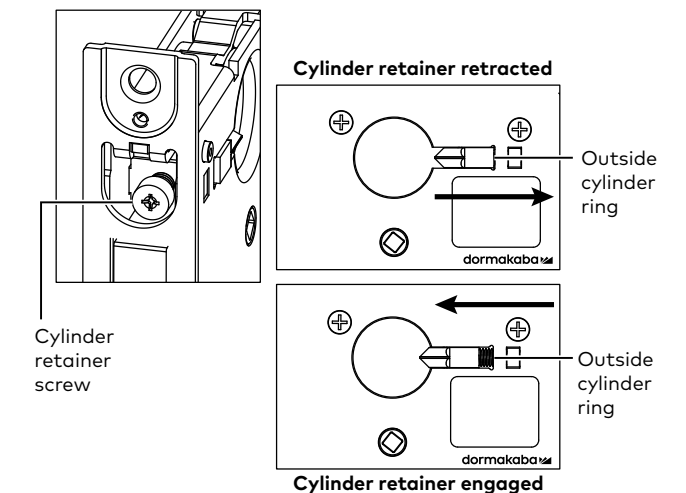


Fig. 4

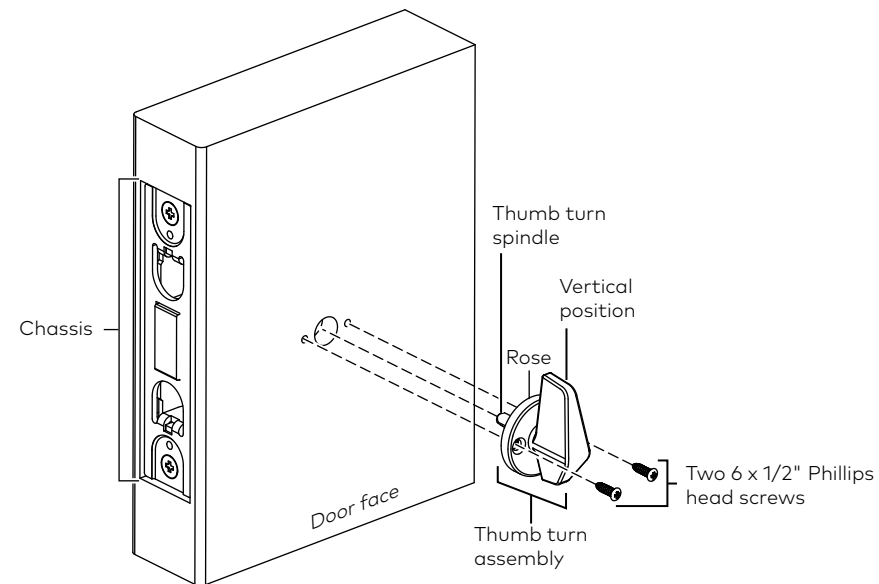


1.3 Install standard thumb turn mortise thumb turn

Fig. 5

Standard thumb turn

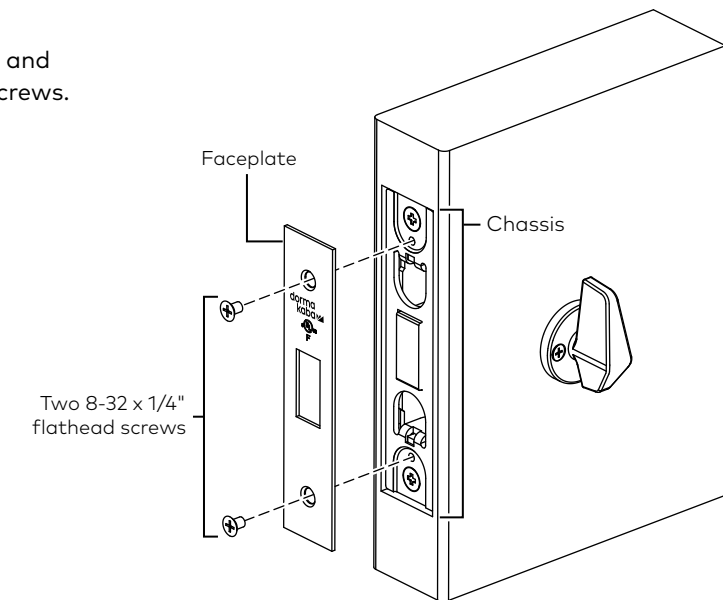
- 1.3.1 Insert thumb turn spindle through door face, into chassis.
- 1.3.2 Secure thumb turn rose to door with two 6 x 1/2" Phillips head screws.



1.4 Install faceplate

Fig. 6

- 1.4.1 Place faceplate against face of chassis and secure with two 8-32 x 1/4" flathead screws.



1.5 Install strike

Fig. 7

- 1.5.1 Insert strike and dust box and secure with two 8-32 x 3/4" combo screws.

Small strike part list:

1. Two 8-32 x 3/4" combo screws
2. Strike
3. Dust box

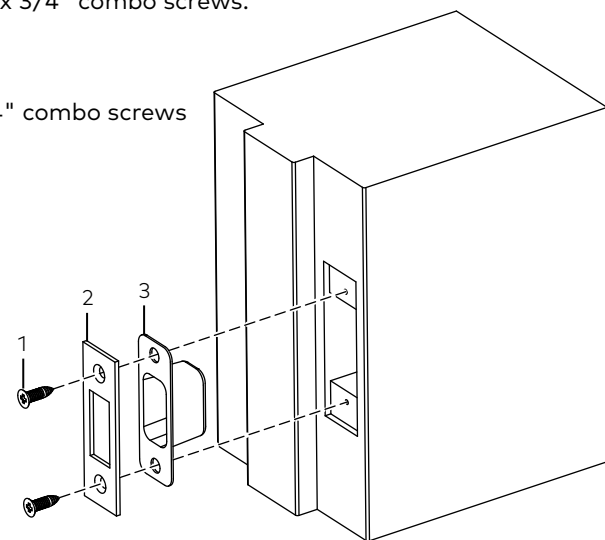
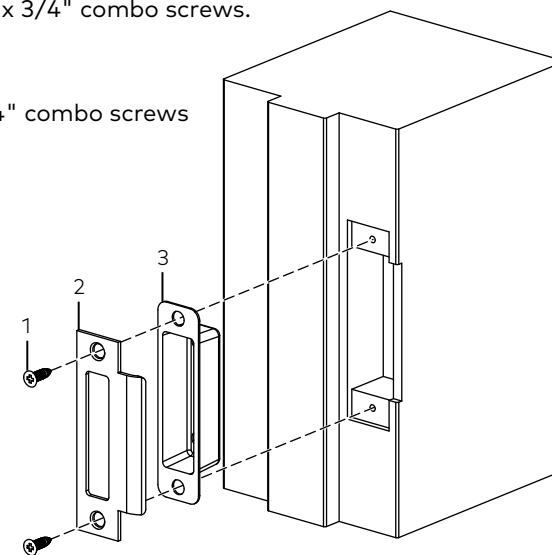


Fig. 8

- 1.5.2 Insert strike and dust box and secure with two 12-24 x 3/4" combo screws.

Large strike part list:

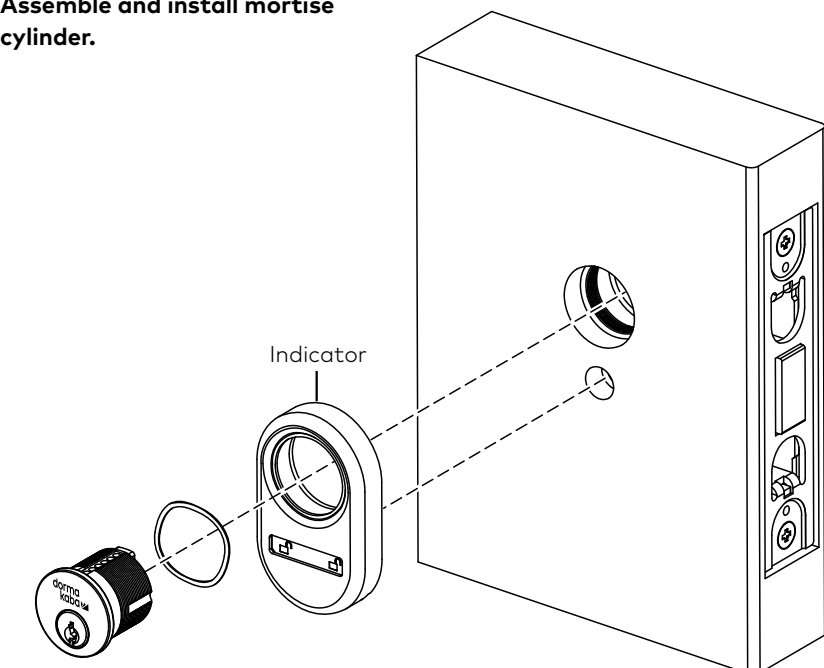
1. Two 12-24 x 3/4" combo screws
2. Strike
3. Dust box



MD171 cylinder indicator x turn

Fig. 9

NOTE: Please reference 1.2: Assemble and install mortise cylinder.



For online instructions visit:
<https://dhwsupport.dormakaba.com/hc/en-us>
 For assistance or warranty information:
 Call 1-800-392-5209 or visit
<https://dhwsupport.dormakaba.com/hc/en-us>