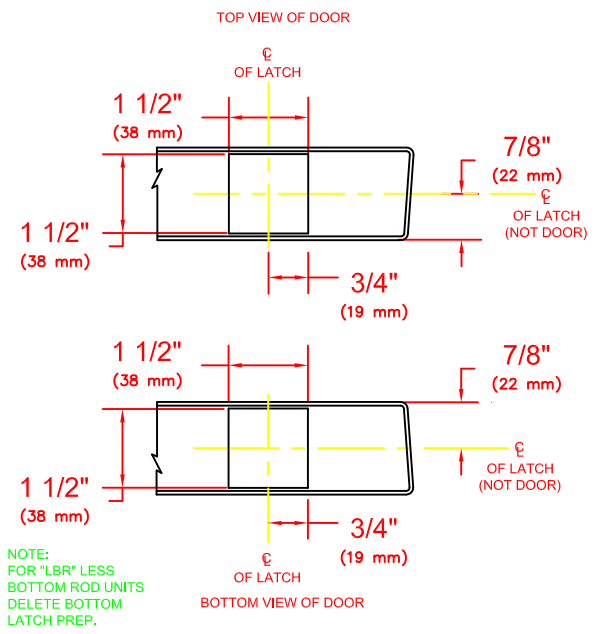
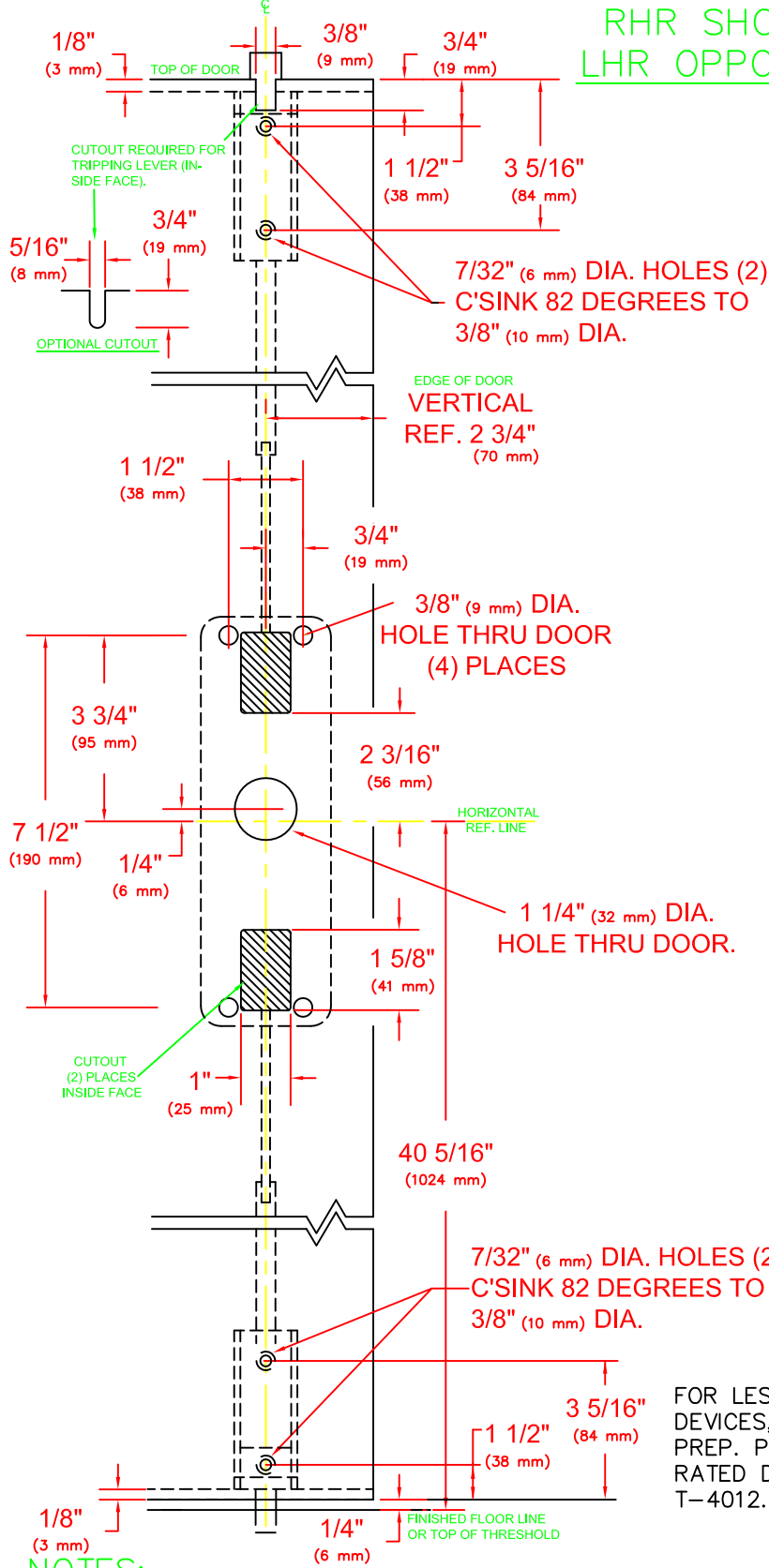
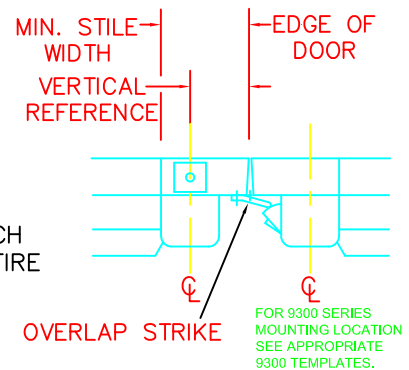
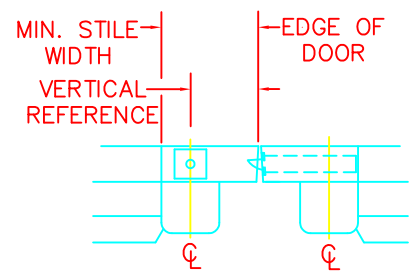
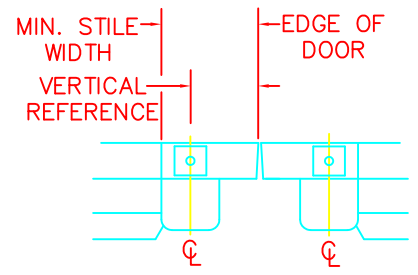


RHR SHOWN  
LHR OPPOSITE



NOTE:  
FOR "LBR" LESS  
BOTTOM ROD UNITS  
DELETE BOTTOM  
LATCH PREP.



FOR LESS BOTTOM ROD (LBR)  
DEVICES, DELETE BOTTOM  
LATCH PREP. POPPER REQUIRED ON FIRE  
RATED DEVICE, SEE TEMPLATE  
T-4012.

NOTES:

1. SEE MASTER SHEET #T-0001 FOR SUGGESTED DOOR REINFORCEMENT.
2. SEE ADDITIONAL TRIM TEMPLATE WHEN REQUIRED.
3. DEVICE WILL COVER STANDARD SDI CUTOUT.

VERTICAL REFERENCE	MINIMUM STILE WIDTH
2 3/4" (70 mm)	4 3/16" (106 mm)

REV. No. 4

REVISION: Lever Style Notes

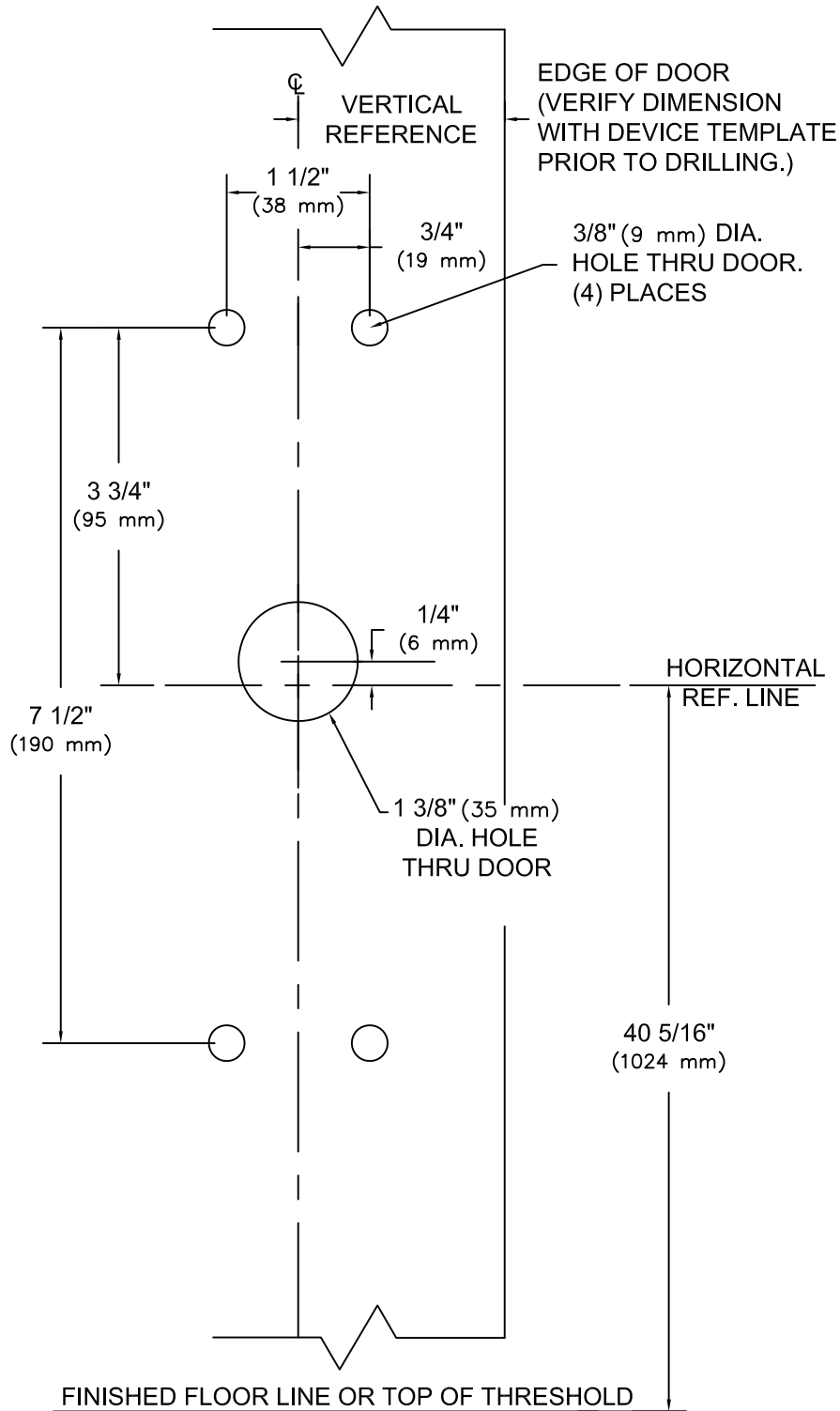
DATE: 1-24-14



9100 & F9100 x Y\*03R  
VERTICAL ROD EXIT DEVICE  
Note; \* Denotes all Lever Design Styles  
(For Use With Optional ALD Brackets)

TEMPLATE NUMBER  
T-9132AL

RHR SHOWN  
LHR OPPOSITE



EDGE OF DOOR  
(VERIFY DIMENSION  
WITH DEVICE TEMPLATE  
PRIOR TO DRILLING.)

3/8" (9 mm) DIA.  
HOLE THRU DOOR.  
(4) PLACES

HORIZONTAL  
REF. LINE


1 3/8" (35 mm)  
DIA. HOLE  
THRU DOOR

40 5/16"  
(1024 mm)

FINISHED FLOOR LINE OR TOP OF THRESHOLD

NOTES:

1. SEE MASTER SHEET #T-0001 FOR SUGGESTED DOOR REINFORCEMENT.
2. SEE ADDITIONAL DEVICE TEMPLATE WHEN REQUIRED.
3. TRIM WILL COVER STANDARD SDI CUTOUT.

REV. No. 6	REVISION: Lever Style Notes	DATE: 1-16-14
	<p>Y003, Y*03R TRIM</p> <p>Note; * Denotes all Lever Design Styles</p>	<p>TEMPLATE NUMBER T-9003 ©</p>